

# FOR LEASE

## WAREHOUSE/DISTRIBUTION

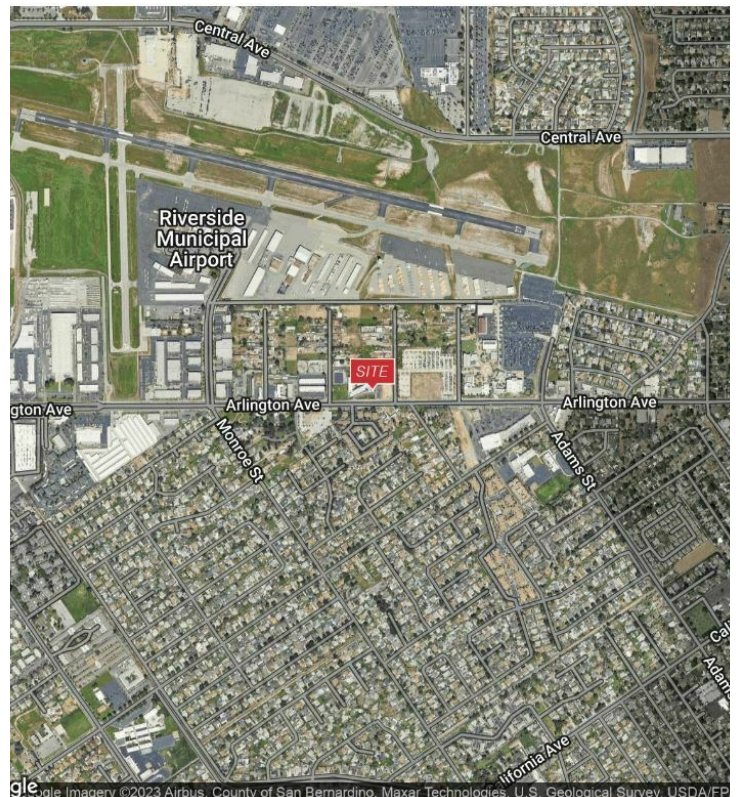


**6985 NEC ARLINGTON AVENUE | RIVERSIDE, CALIFORNIA**

### PROPERTY HIGHLIGHTS

- Airport Commerce Center
- Lease Rate: \$1.35 + \$0.10 CAM
- Ground Level Doors: 1
- Parking Ratio: 4:1,000/ Spaces 7
- Clear Height: 18
- Amps: 200 / Volts: 120/208

| SPACES | LEASE RATE      | SPACE SIZE |
|--------|-----------------|------------|
| Unit F | \$1.35 SF/month | 1,696 SF   |
| Unit G | \$1.35 SF/month | 1,736 SF   |



### EXCLUSIVELY LISTED BY:

#### Paul Fisher

Executive Vice President  
949.468.2324 Direct  
pfisher@naicapital.com  
CA DRE #01302114



[www.naicapital.com](http://www.naicapital.com)