

For Sale | 9211 Harney Baptist Church Rd

9211 HARNEY BAPTIST CHURCH RD, TAMPA, FL 33637



PROPERTY DESCRIPTION

Property has 1,584 sf mobile home with deck and shed.

Private and secluded location but centrally Located:
.6 miles to I-75 (2 miles to on/off ramp)
2 miles to I-4
200 ft from Amazon Fulfillment Center

Currently zoned RSC-6 - Residential, Single-Family Conventional which provides the opportunity for 7,000 square foot or larger lot single-family conventional development in a suburban living environment in conformance with the provisions of the Comprehensive Plan.

Future Land Use Community Mixed Use -12 (Residential, Community retail commercial, offices, research park, light industrial, multi-purpose, clustered residential, mixed use).

LOCATION DESCRIPTION

Property is located at 9211 Harney Baptist Church Rd. off of US 301.

PROPERTY HIGHLIGHTS

- Adjacent .23 acres available on North and West side.
- Ideal piece for assemblage with adjoining property.

OFFERING SUMMARY

Sale Price:	Subject To Offer
Lot Size:	0.46 Acres



John Lochner

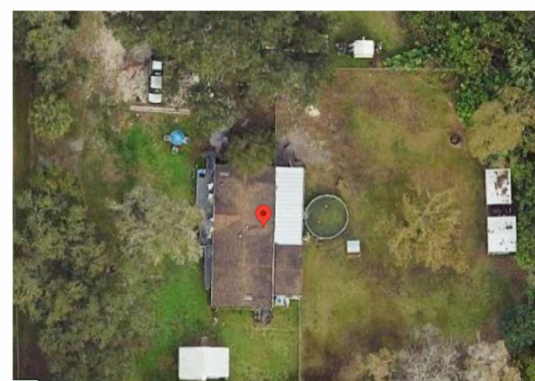
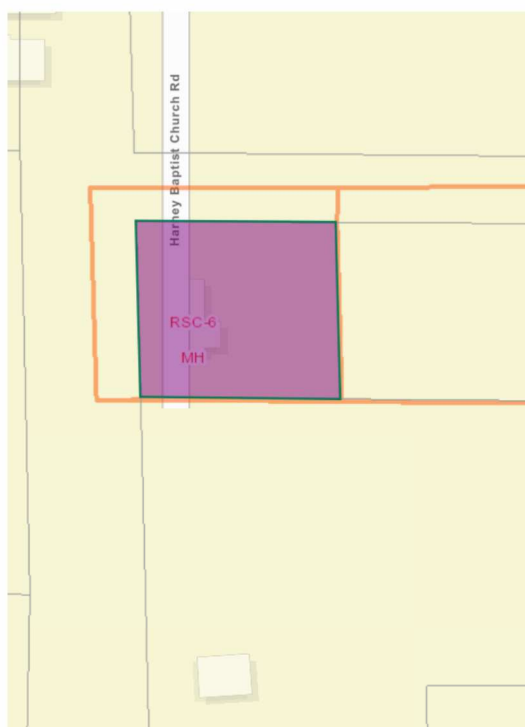
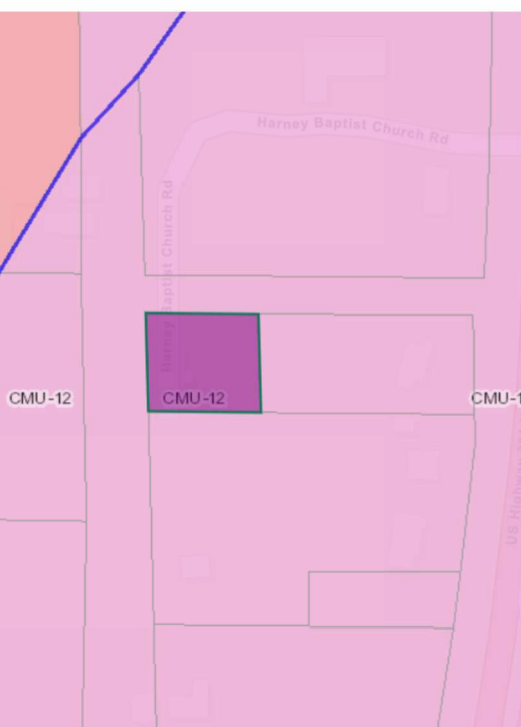
360.901.9329
jlochner@roireal.estate



The information above has been obtained from sources believed reliable. While we do not doubt its accuracy we have not verified it and make no guarantee, warranty or representation about it. It is your responsibility to independently confirm its accuracy and completeness. Any projections, opinions, assumptions, or estimates used are for example only and do not represent the current or future performance of the property. The value of this transaction to you depends on tax and other factors which should be evaluated by your tax, financial, and legal advisors. You and your advisors should conduct a careful, independent investigation of the property to determine to your satisfaction the suitability of the property for your needs.

For Sale | 9211 Harney Baptist Church Rd

9211 HARNEY BAPTIST CHURCH RD, TAMPA, FL 33637



John Lochner

360.901.9329
jlochner@roireal.estate



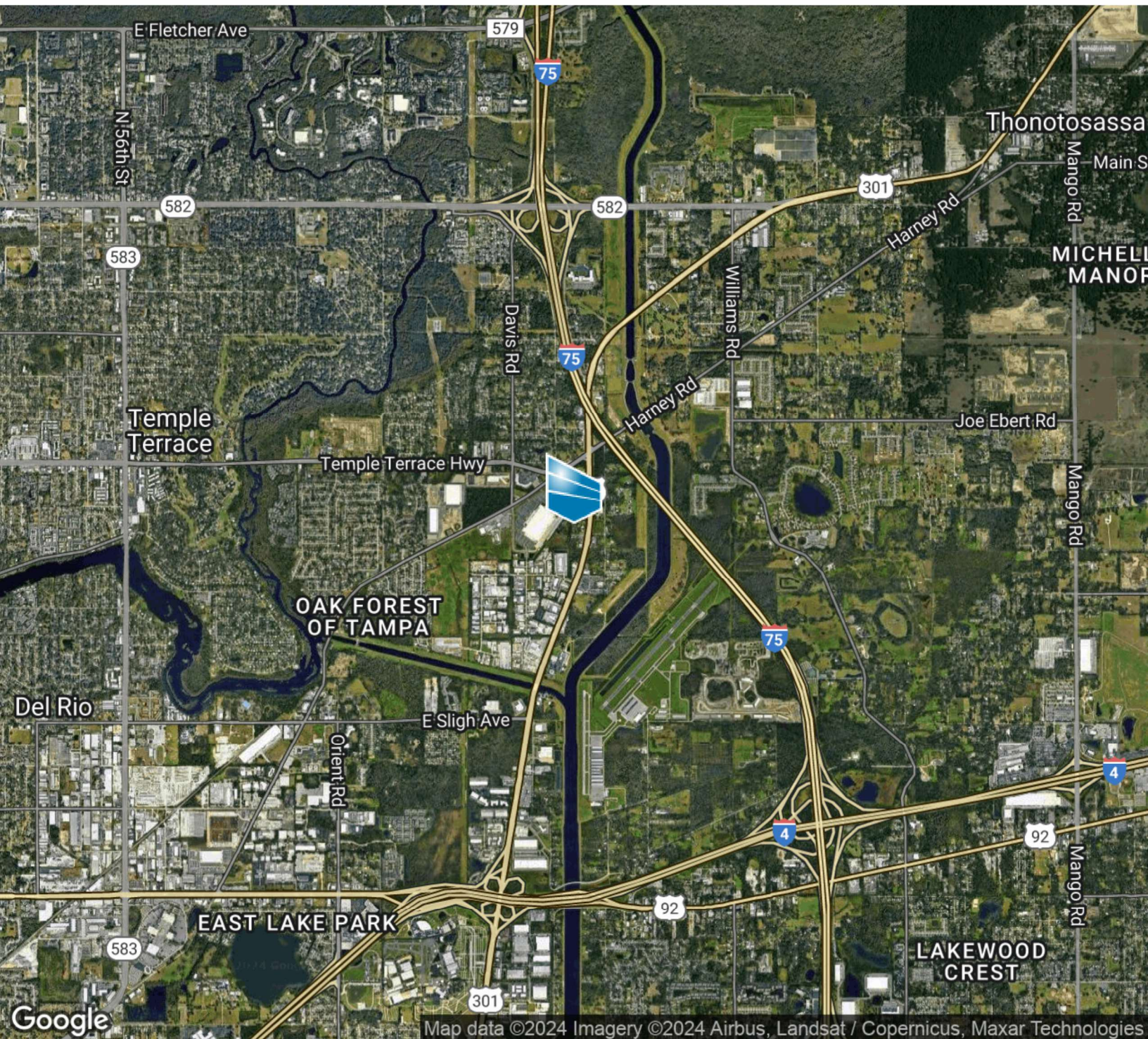
Member of:



The information above has been obtained from sources believed reliable. While we do not doubt its accuracy we have not verified it and make no guarantee, warranty or representation about it. It is your responsibility to independently confirm its accuracy and completeness. Any projections, opinions, assumptions, or estimates used are for example only and do not represent the current or future performance of the property. The value of this transaction to you depends on tax and other factors which should be evaluated by your tax, financial, and legal advisors. You and your advisors should conduct a careful, independent investigation of the property to determine to your satisfaction the suitability of the property for your needs.

For Sale | 9211 Harney Baptist Church Rd

9211 HARNEY BAPTIST CHURCH RD, TAMPA, FL 33637



Map data ©2024 Imagery ©2024 Airbus, Landsat / Copernicus, Maxar Technologies



John Lochner

360.901.9329
jlochner@roireal.estate



Member of:

The information above has been obtained from sources believed reliable. While we do not doubt its accuracy we have not verified it and make no guarantee, warranty or representation about it. It is your responsibility to independently confirm its accuracy and completeness. Any projections, opinions, assumptions, or estimates used are for example only and do not represent the current or future performance of the property. The value of this transaction to you depends on tax and other factors which should be evaluated by your tax, financial, and legal advisors. You and your advisors should conduct a careful, independent investigation of the property to determine to your satisfaction the suitability of the property for your needs.

For Sale | 9211 Harney Baptist Church Rd

9211 HARNEY BAPTIST CHURCH RD, TAMPA, FL 33637



John Lochner

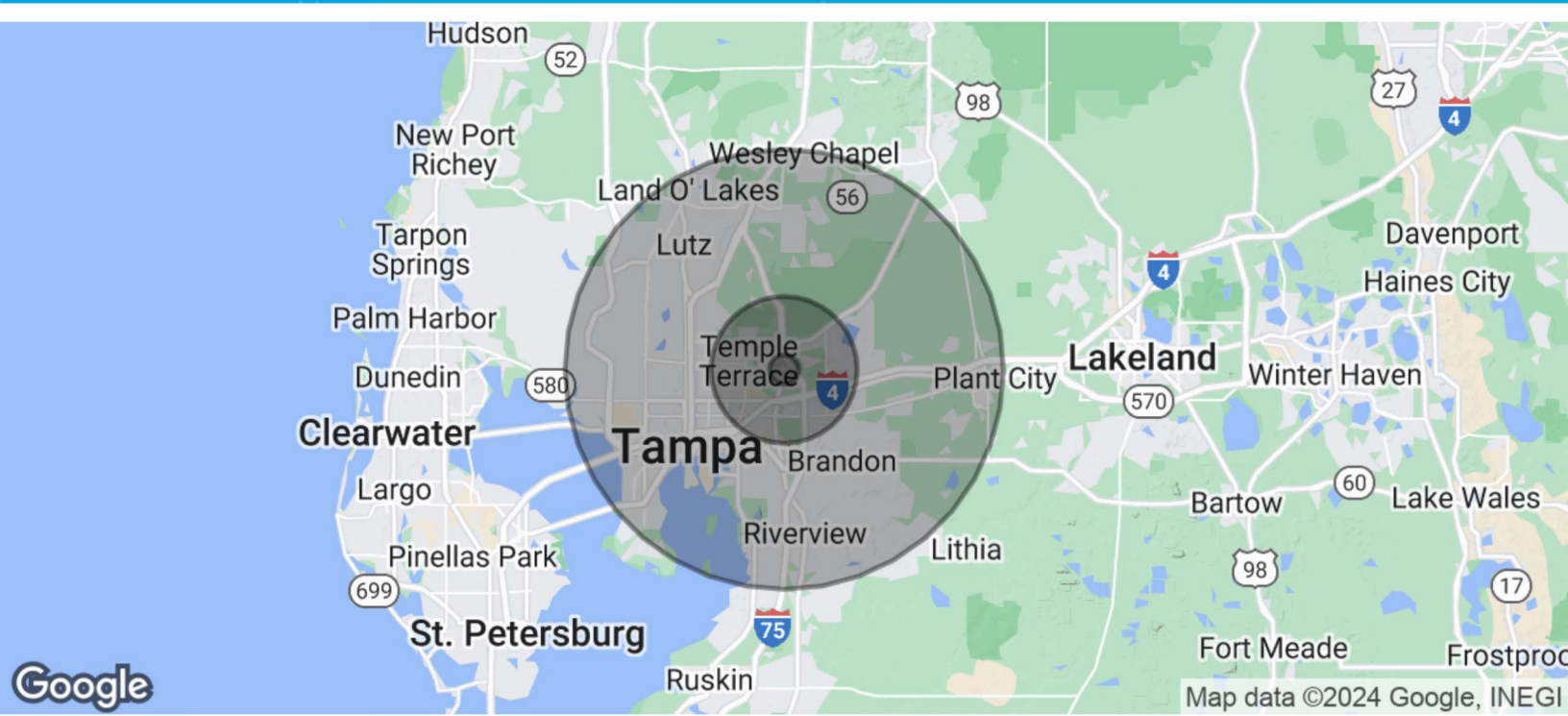
360.901.9329
jlochner@roireal.estate



The information above has been obtained from sources believed reliable. While we do not doubt its accuracy we have not verified it and make no guarantee, warranty or representation about it. It is your responsibility to independently confirm its accuracy and completeness. Any projections, opinions, assumptions, or estimates used are for example only and do not represent the current or future performance of the property. The value of this transaction to you depends on tax and other factors which should be evaluated by your tax, financial, and legal advisors. You and your advisors should conduct a careful, independent investigation of the property to determine to your satisfaction the suitability of the property for your needs.

For Sale | 9211 Harney Baptist Church Rd

9211 HARNEY BAPTIST CHURCH RD, TAMPA, FL 33637



POPULATION	1 MILE	5 MILES	15 MILES
Total Population	4,264	160,994	1,478,538
Average Age	41	37	40
Average Age (Male)	0	0	0
Average Age (Female)	0	0	0

HOUSEHOLDS & INCOME	1 MILE	5 MILES	15 MILES
Total Households	1,665	59,978	565,990
# of Persons per HH	2.6	2.7	2.6
Average HH Income	\$75,740	\$68,112	\$104,871
Average House Value	\$262,480	\$291,437	\$406,198

Demographics data derived from AlphaMap



John Lochner

360.901.9329
jlochner@roireal.estate



The information above has been obtained from sources believed reliable. While we do not doubt its accuracy we have not verified it and make no guarantee, warranty or representation about it. It is your responsibility to independently confirm its accuracy and completeness. Any projections, opinions, assumptions, or estimates used are for example only and do not represent the current or future performance of the property. The value of this transaction to you depends on tax and other factors which should be evaluated by your tax, financial, and legal advisors. You and your advisors should conduct a careful, independent investigation of the property to determine to your satisfaction the suitability of the property for your needs.