

## REDONDO BEACH



# 1109 S Pacific Coast Hwy

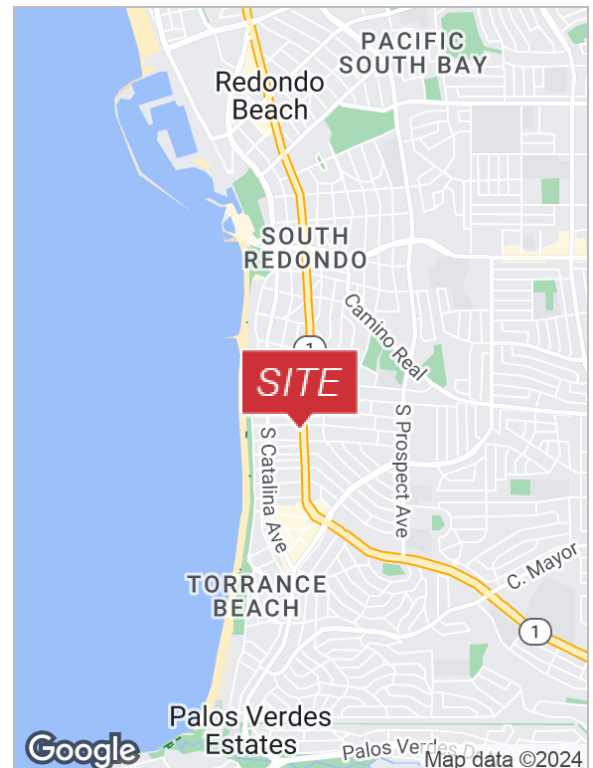
Redondo Beach, California 90277

## Lease Highlights

- \$12,000 / Mo NNN
- Thriving South Redondo Beach and Palos Verdes submarket (South Bay) with strong visibility from Pacific Coast Highway
- 27K cars per day and HH Income of \$117K (3 mile radius)
- Blocks away from the vibrant Riviera Village, the retail center of coastal Redondo Beach and Palos Verdes
- Walker's Paradise (94), two blocks from beach and great opportunity for outdoor seating

## Property Description

Unique opportunity to lease an existing 2,704 SF former restaurant space or ground lease. The intersection of PCH and D Street, a few blocks from the ocean and famous Riviera Village and many other well-known retailers and restaurants.



For more information

**Sheri Messerlian**

O: 310.436.1762

smesserlian@naicapital.com | CalDRE #00450571

No warranty, express or implied, is made as to the accuracy of the information contained herein. This information is submitted subject to errors, omissions, change of price, rental or other conditions, withdrawal without notice, and is subject to any special listing conditions imposed by our principals. Cooperating brokers, buyers, tenants and other parties who receive this document should not rely on it, but should use it as a starting point of analysis, and should independently confirm the accuracy of the information contained herein through a due diligence review of the books, records, files and documents that constitute reliable sources of the information described herein. Logos are for identification purposes only and may be trademarks of their respective companies. NAI Capital Commercial, Inc. CAL DRE Lic. #02130474

**NAI Capital**

970 W. 190th Street, Suite 100

Torrance, CA 90502

310.878.6900

**naicapital.com**



For Lease

1109 S Pacific Coast Hwy



**Sheri Messerlian**

310.436.1762

[smesserlian@naicapital.com](mailto:smesserlian@naicapital.com)

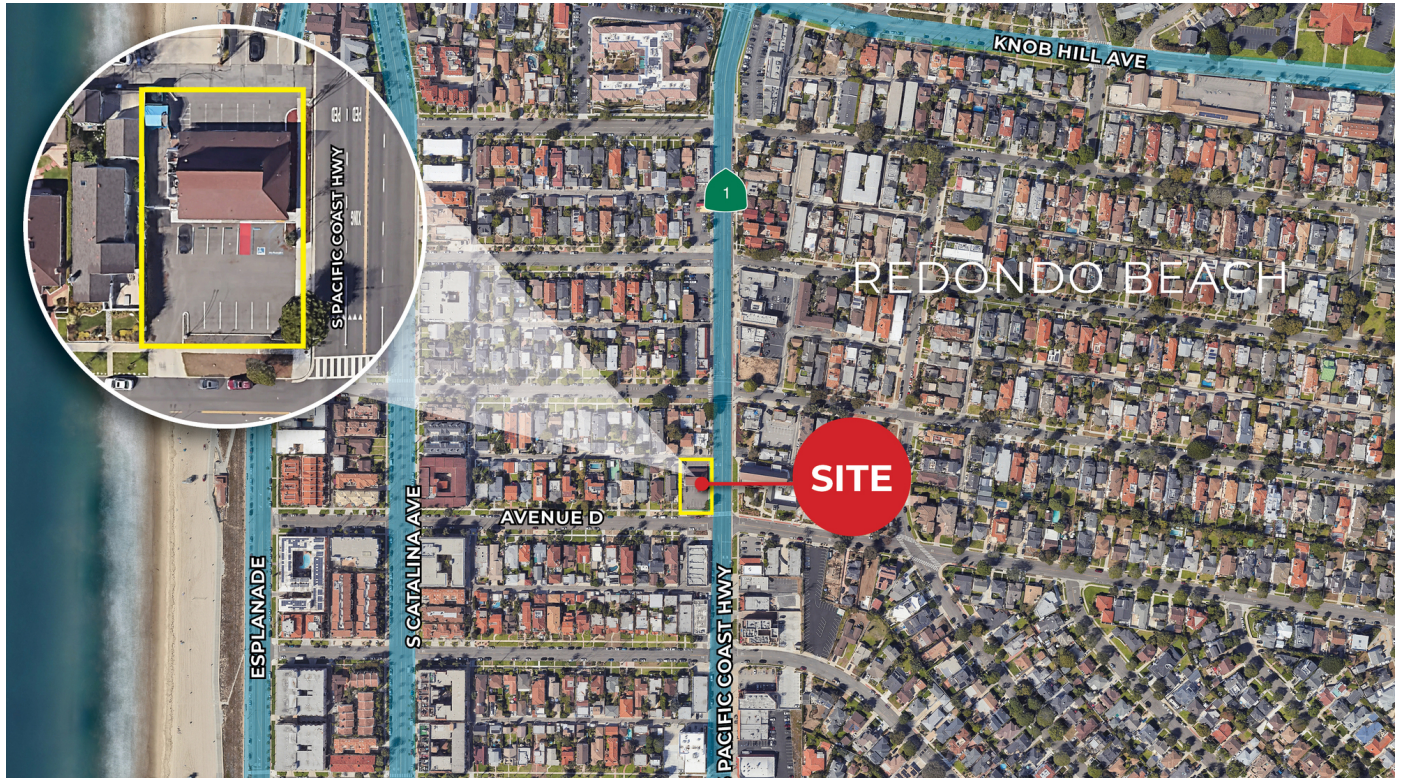
CalDRE #00450571

**NAI**Capital  
COMMERCIAL REAL ESTATE SERVICES, WORLDWIDE



For Lease

# 1109 S Pacific Coast Hwy



**Sheri Messerlian**

310.436.1762

smesserlian@naicapital.com

CalDRE #00450571

**NAI Capital**  
COMMERCIAL REAL ESTATE SERVICES, WORLDWIDE