

# SPACE COAST INNOVATION PARK

Located in the heart of Florida's Space Coast in Brevard County  
State-of-the-art industrial buildings for lease



## PROPERTY OVERVIEW

Located in the heart of Florida's Space Coast in Brevard County, Space Coast Innovation Park is a state-of-the-art industrial development bringing 1,104,760 total building square feet consisting of five industrial buildings in Phase I and II.

- **Phase I:** three industrial buildings totaling 639,040 SF
- **Phase II:** two industrial buildings totaling 465,720 SF

These newest and largest Class-A facilities have direct access to Space Coast Regional Airport (TIX) and are within the Exploration Spaceport federally licensed spaceport territory.



## PROPERTY HIGHLIGHTS



Modern industrial development situated on 100 acres of land



Located within the boundaries of Space Coast Regional Airport's (TIX) federally licensed Exploration Spaceport



Various opportunities for state and local incentives



Direct access to SR-407



Within 10 miles of Kennedy Space Center (Vehicle Assembly Building)



Located in a Foreign Trade Zone #136 waiving the standard application fee for businesses and reduces processing times



Full-service distribution/manufacturing & logistics opportunities



Corporate campus opportunities

Joint Venture Development by:



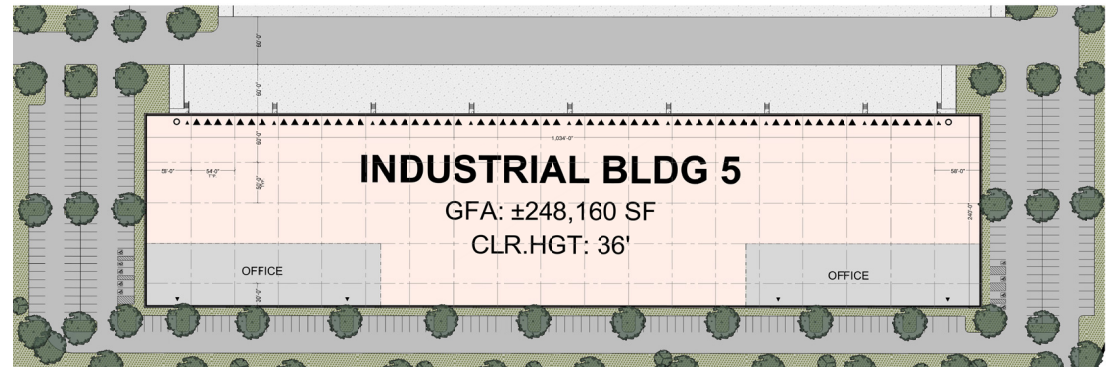
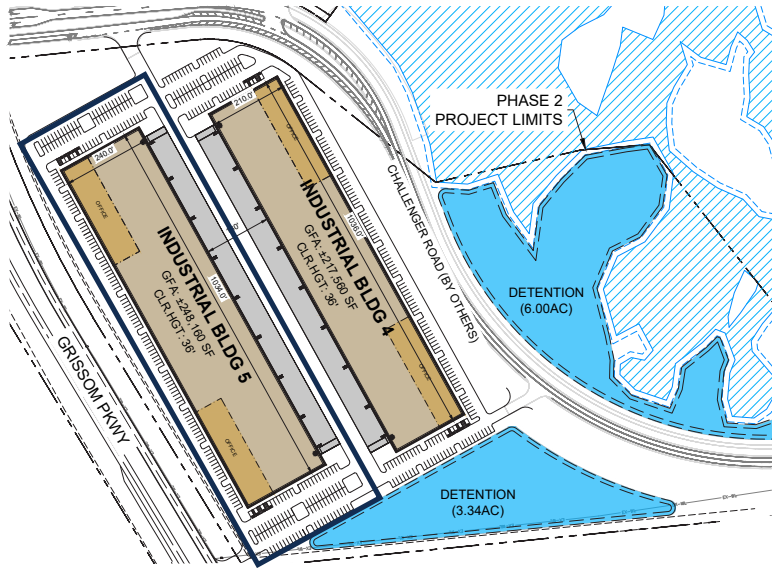
Hines

# SPACE COAST INNOVATION PARK

Located in the heart of Florida's Space Coast in Brevard County  
State-of-the-art industrial buildings for lease



## BUILDING 5 | PROPERTY DETAILS



**TOTAL BUILDING SF**  
±248,160 SF



**OFFICE SF**  
BUILT-TO-SUIT



**CLEAR HEIGHT**  
±36'



**TRUCK COURT**  
180' SHARED



**DOCK-HIGH  
LOADING BAYS**  
61



**GRADE-LEVEL  
LOADING BAYS**  
2



**SPRINKLERS**  
ESFR



**AUTO PARKING**  
1 SPACE PER 1,000 SF

**FOR LEASING INFORMATION : [scip@consultkey.com](mailto:scip@consultkey.com)**



**MIKE MOSS, SIOR**  
321.543.2498  
[mike@teamlbr.com](mailto:mike@teamlbr.com)

**MIKE MOSS, II**  
321.266.1150  
[mmoss@teamlbr.com](mailto:mmoss@teamlbr.com)



\*Each Office Independently Owned And Operated

**NICHOLAS LIMNER, RPA**  
321.250.4962 ext.4  
[nlimner@consultkey.com](mailto:nlimner@consultkey.com)