

Industrial/Flex Property Available For Sublease Approx. ±7,472 SF

5900 Sea Lion Pl Suite 100, Carlsbad

NAI Capital
COMMERCIAL REAL ESTATE SERVICES, WORLDWIDE



5900 Sea Lion Pl Suite 100

Carlsbad, CA 92010

Available for Sublease

Nikki Liu

Senior Associate

949.468.2386

nliu@naicapital.com

CA DRE #02038755

Andrew Batcheller

Vice President

949.468.2379

andrewbatcheller@naicapital.com

CA DRE #02097603

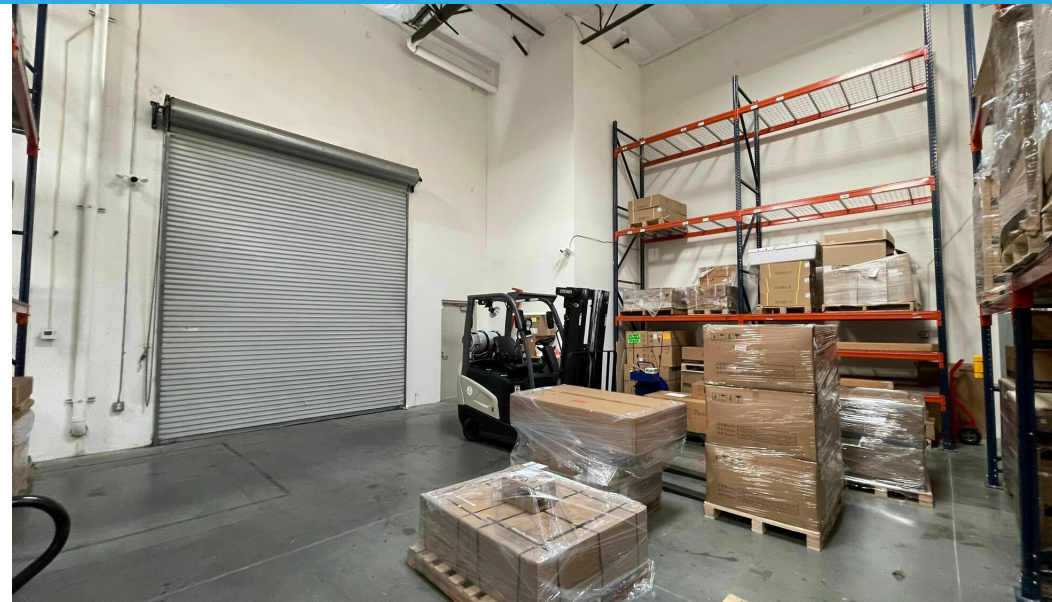
Steve Liu

Executive Vice President

949.468.2385

sliu@naicapital.com

CA DRE #01323150



Offering Summary

Lease Rate:	\$1.60 SF/month (MG)
Available SF:	7,472 SF
Zoning:	P-M, Planned Industrial
Market:	North San Diego
Submarket:	Carlsbad
Ground Level Doors:	2
Office (estimated):	45%
Warehouse (estimated):	55%

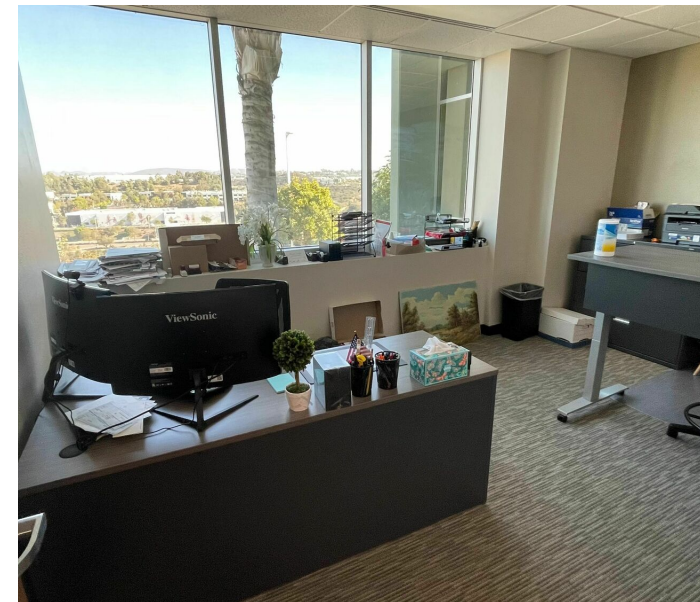
Property Highlights

- ±7,472 SF 2-Story Industrial/Flex Unit Available
- Sublease through September 2027
- Premier Carlsbad Location
- 23' Warehouse Clear Height
- Two (2) 12x14 Ground Level Doors
- Beautiful Views from 2nd Floor Offices
- 2 Conference Rooms
- Ample On-Site Parking (3.5:1000)

Steve Liu
949.468.2385
sliu@naicapital.com
CA DRE #01323150

Andrew Batcheller
949.468.2379
andrewbatcheller@naicapital.com
CA DRE #02097603

No warranty, express or implied, is made as to the accuracy of the information contained herein. This information is submitted subject to errors, omissions, change of price, rental or other conditions, withdrawal without notice, and is subject to any special listing conditions imposed by our principals. Cooperating brokers, buyers, tenants and other parties who receive this document should not rely on it, but should use it as a starting point of analysis, and should independently confirm the accuracy of the information contained herein through a due diligence review of the books, records, files and documents that constitute reliable sources of the information described herein. Logos are for identification purposes only and may be trademarks of their respective companies. NAI Capital Commercial, Inc. CAL DRE Lic. #02130474

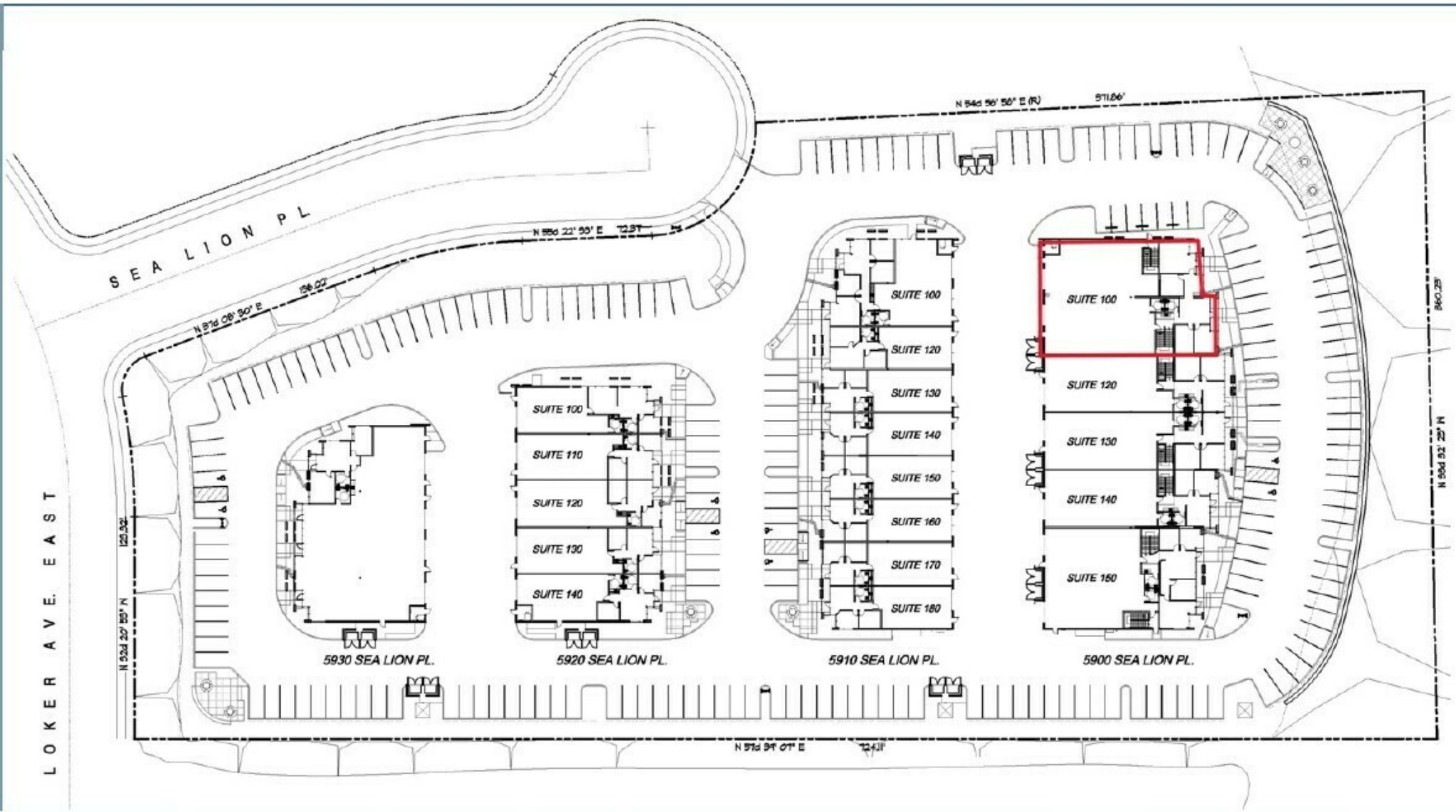


Steve Liu
949.468.2385
sliu@naicapital.com
CA DRE #01323150

Andrew Batcheller
949.468.2379
andrewbatcheller@naicapital.com
CA DRE #02097603

No warranty, express or implied, is made as to the accuracy of the information contained herein. This information is submitted subject to errors, omissions, change of price, rental or other conditions, withdrawal without notice, and is subject to any special listing conditions imposed by our principals. Cooperating brokers, buyers, tenants and other parties who receive this document should not rely on it, but should use it as a starting point of analysis, and should independently confirm the accuracy of the information contained herein through a due diligence review of the books, records, files and documents that constitute reliable sources of the information described herein. Logos are for identification purposes only and may be trademarks of their respective companies. NAI Capital Commercial, Inc. CAL DRE Lic. #02130474

Oaks East Business Center, Carlsbad
Site Plan

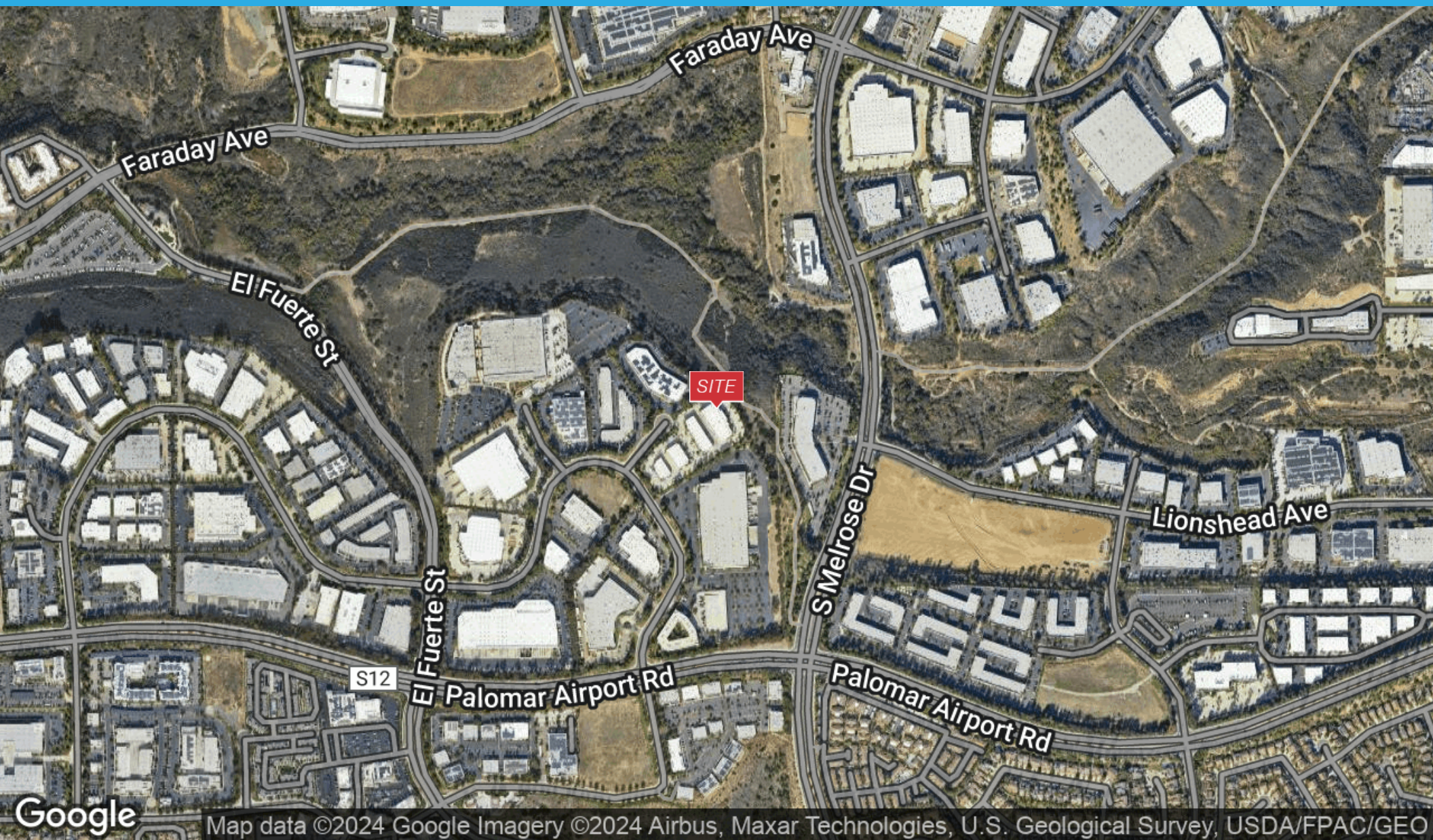


Steve Liu
949.468.2385
sliu@naicapital.com
CA DRE #01323150

Andrew Batcheller
949.468.2379
andrewbatcheller@naicapital.com
CA DRE #02097603

No warranty, express or implied, is made as to the accuracy of the information contained herein. This information is submitted subject to errors, omissions, change of price, rental or other conditions, withdrawal without notice, and is subject to any special listing conditions imposed by our principals. Cooperating brokers, buyers, tenants and other parties who receive this document should not rely on it, but should use it as a starting point of analysis, and should independently confirm the accuracy of the information contained herein through a due diligence review of the books, records, files and documents that constitute reliable sources of the information described herein. Logos are for identification purposes only and may be trademarks of their respective companies. NAI Capital Commercial, Inc. CAL DRE Lic. #02130474

Location Map



Steve Liu
949.468.2385
sliu@naicapital.com
CA DRE #01323150

Andrew Batcheller
949.468.2379
andrewbatcheller@naicapital.com
CA DRE #02097603

No warranty, express or implied, is made as to the accuracy of the information contained herein. This information is submitted subject to errors, omissions, change of price, rental or other conditions, withdrawal without notice, and is subject to any special listing conditions imposed by our principals. Cooperating brokers, buyers, tenants and other parties who receive this document should not rely on it, but should use it as a starting point of analysis, and should independently confirm the accuracy of the information contained herein through a due diligence review of the books, records, files and documents that constitute reliable sources of the information described herein. Logos are for identification purposes only and may be trademarks of their respective companies. NAI Capital Commercial, Inc. CAL DRE Lic. #02130474