

OFFICE BUILDING FOR LEASE
MAY 2024

BERRYHILL MEDICAL PARK OFFICE

stirling



OFFERING SUMMARY

Available SF:	2,246 - 4,876 SF
Lease Rate:	\$21.34 SF/yr (MG)
Lot Size:	0.55 Acres
Year Built:	1990
Building Size:	4,876 SF
Renovated:	2023
Zoning:	C1
Market:	Milton

PROPERTY OVERVIEW

Berryhill Medical Park Opportunity. Service both Milton & Pace from this location. . Outstanding medical/office facility next door to Santa Rosa Medical Center. Excellent condition with excess common parking. Multiple exam rooms, waiting areas, offices, bathrooms, etc. throughout the entire facility. Tenant pays 46% of electricity, which will be billed monthly.

This facility has received several upgrades in 2023 including new roof, exterior paint, HVAC units, landscaping and resurfaced/painted/stripped parking lot.

Current additional rent expenses are estimated at \$3.84sf, which includes property taxes, water/sewer, lawn care & insurance.

Tenant pays prorata share of electricity (upon full occupancy) which is billed monthly & all janitorial costs.

PROPERTY HIGHLIGHTS

- Berryhill Medical Park Opportunity next to Santa Rosa Medical Center.
- Service both Milton & Pace from this location
- Berryhill medical facility with two suites or easily combined for one unit

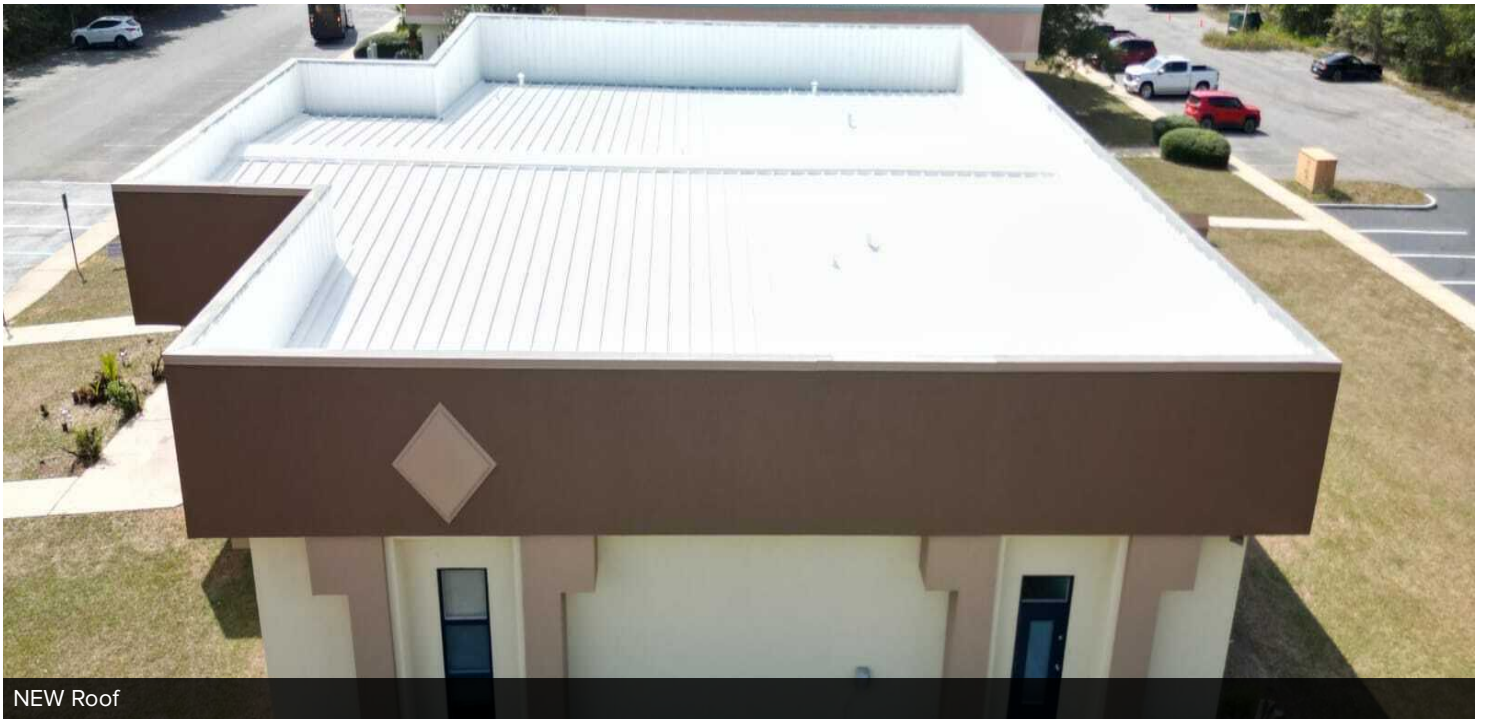


LEASE INFORMATION

Lease Type:	MG	Lease Term:	60 months
Total Space:	2,246 - 4,876 SF	Lease Rate:	\$21.34 SF/yr

AVAILABLE SPACES

SUITE	TENANT	SIZE (SF)	LEASE TYPE	LEASE RATE
5950 Berryhill Medical Park Dr.	Available	4,876 SF	Modified Gross	\$21.34 SF/yr
Suite A	Available	2,246 - 4,876 SF	Modified Gross	\$21.34 SF/yr
Suite B	Available	2,630 - 4,876 SF	Modified Gross	\$21.34 SF/yr



NEW Roof



Rear Parking Lot



NEW Roof

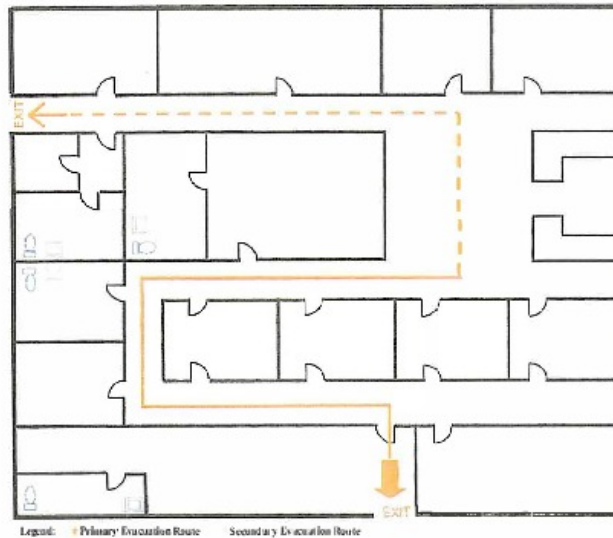


Proximity to Hospital

SUITE A

Milton PSC

Emergency Evacuation Route



SUITE B

