

40 ANGELS COURT

MONTGOMERY, AL 36109

Executive Summary



OFFERING SUMMARY

Sale Price: \$375,000

Year Built: 2003

Building Size: 8,016

Zoning: R-100

Price / SF: \$46.78

PROPERTY HIGHLIGHTS

- Sale includes 1 building totaling ±8,016 SF
- Formerly Part of Angels For The Elderly: A 64 unit/64 bed stand-alone memory care campus made up of four 16-unit buildings located on ±3.2 Acres
- Great condition- just recently shut down within the past 4 months
- Located in prime location adjacent to Publix, Starbucks, NAPA Auto Parts, Shane's Rib Shack, Sol Restaurant & many more
- Situated near several established neighborhoods: Dalraida, Johnstown, Forest Hills, College Grove, Bellehurst and Fox Hollow
- Located just off of Atlanta Highway with traffic counts of ±33,294
- ±1.7 miles from Gunter Annex
- ±2.6 miles from I-85
- ±3.8 miles from Downtown Montgomery
- ±6.3 miles from Maxwell Air Force Base: Serving 25,000 Active Duty, Guard, Reserves, Contractors, and Retirees. The Air Force University is attended by over 20,000 annually

JON MASTERS, CCIM

334.387.2724
Jmasters@mcrmpm.com

MOORE COMPANY REALTY

312 Catoma St #200, Montgomery, AL 36104
334.262.1958 | moorecompanyrealty.com



40 ANGELS COURT

MONTGOMERY, AL 36109

Aerial Photo



JON MASTERS, CCIM

334.387.2724

Jmasters@mcrmpm.com

MOORE COMPANY REALTY

312 Catoma St #200, Montgomery, AL 36104

334.262.1958 | moorecompanyrealty.com



40 ANGELS COURT

MONTGOMERY, AL 36109

Floor Plans

UNIT FLOOR PLANS

Studio One



Studio Two



Studio Three



*Unit Sizes Vary

JON MASTERS, CCIM

334.387.2724

Jmasters@mcrmpm.com

MOORE COMPANY REALTY

312 Catoma St #200, Montgomery, AL 36104

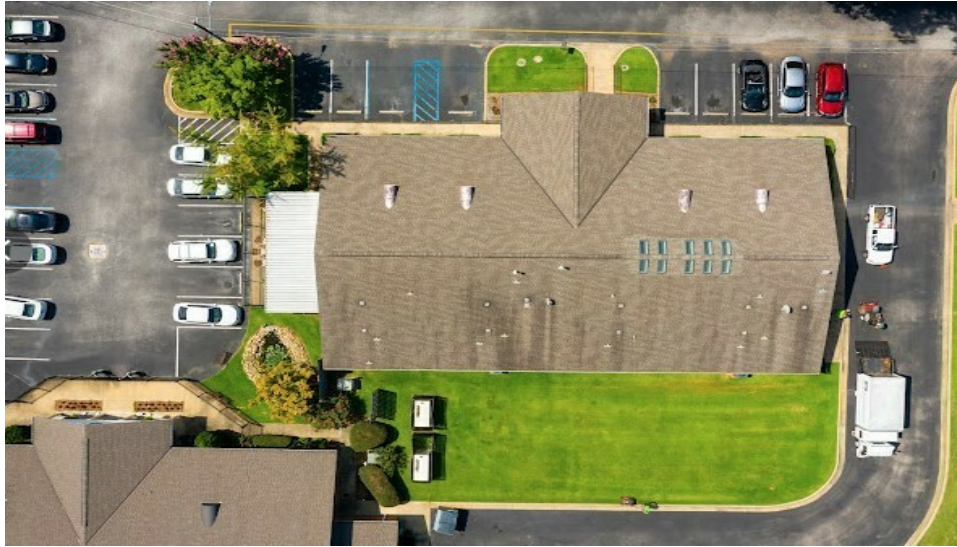
334.262.1958 | moorecompanyrealty.com



40 ANGELS COURT

MONTGOMERY, AL 36109

Additional Photos



JON MASTERS, CCIM

334.387.2724

Jmasters@mcrmpm.com

MOORE COMPANY REALTY

312 Catoma St #200, Montgomery, AL 36104

334.262.1958 | moorecompanyrealty.com



40 ANGELS COURT

MONTGOMERY, AL 36109

Demographics

DEMOGRAPHIC SUMMARY

52 Angels Ct, Montgomery, Alabama, 36109

Ring of 1 mile

KEY FACTS

8,077

Population



3,583

Households

50.0

Median Age

\$44,633

Median Disposable Income

EDUCATION

6%

No High School Diploma



29%

High School Graduate



31%

Some College



34%

Bachelor's/Grad/Prof Degree

INCOME



\$53,869

Median Household Income



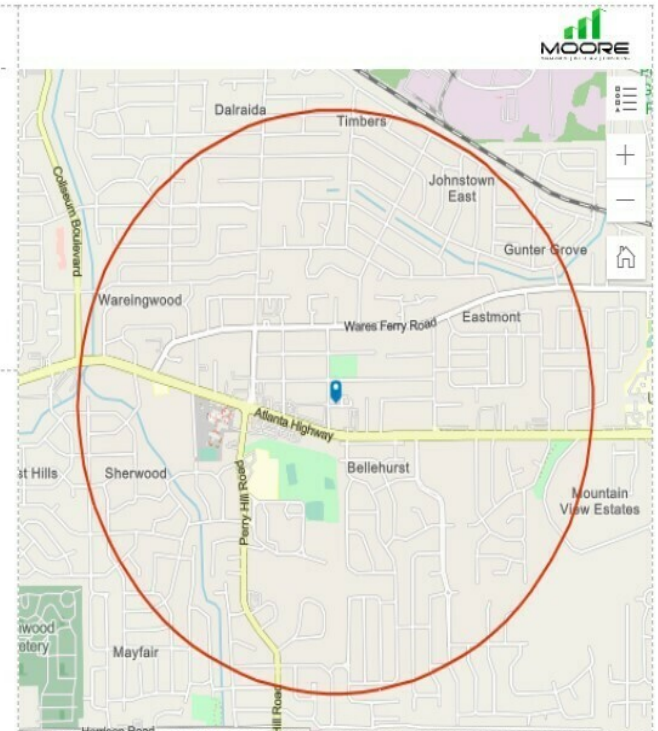
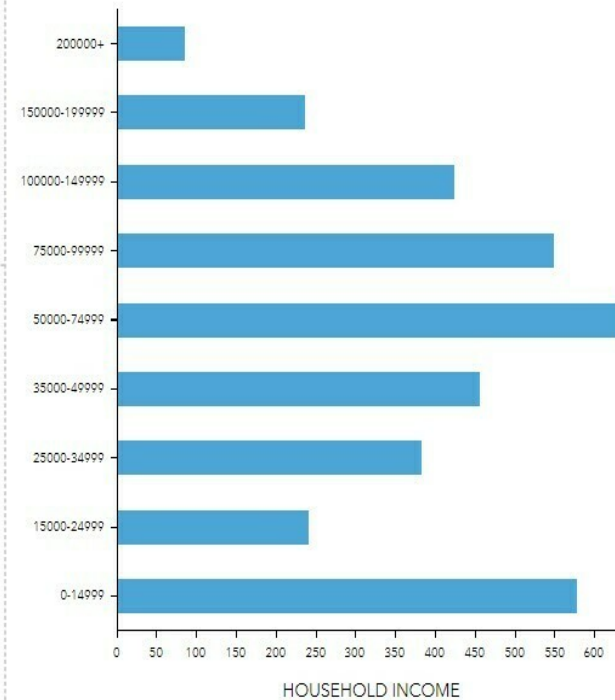
\$32,321

Per Capita Income



\$155,992

Median Net Worth



EMPLOYMENT



White Collar

70%



Blue Collar

18%



Services

17%

2.4%

Unemployment Rate

JON MASTERS, CCIM

334.387.2724

Jmasters@mcrmpm.com

MOORE COMPANY REALTY

312 Catoma St #200, Montgomery, AL 36104

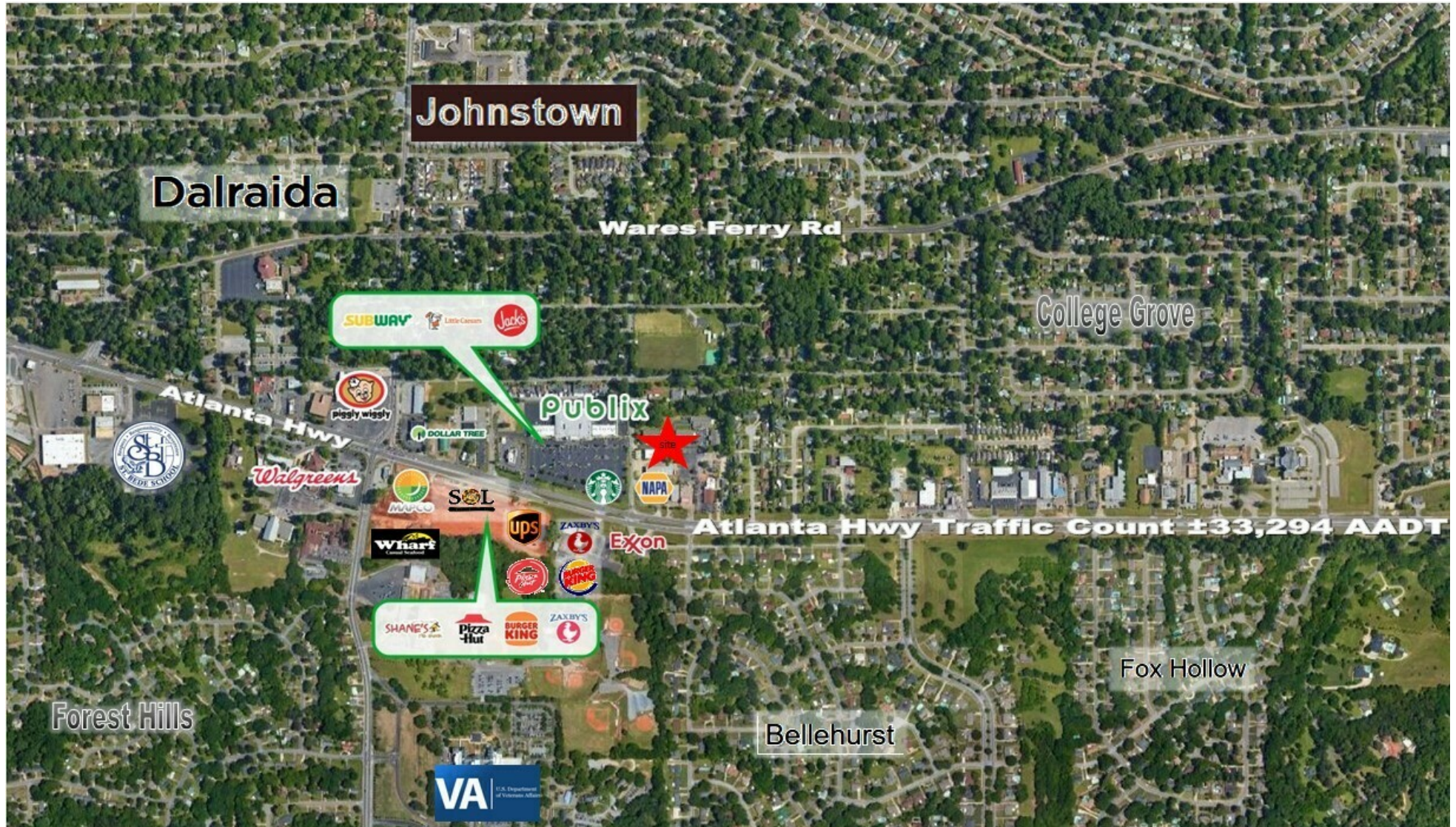
334.262.1958 | moorecompanyrealty.com



40 ANGELS COURT

MONTGOMERY, AL 36109

Retail Map



JON MASTERS, CCIM

334.387.2724

Jmasters@mcrmpm.com

MOORE COMPANY REALTY

312 Catoma St #200, Montgomery, AL 36104

334.262.1958 | moorecompanyrealty.com

