

# 48 ANGELS COURT

MONTGOMERY, AL 36109

## Executive Summary



### OFFERING SUMMARY

Sale Price: \$375,000

Year Built: 1993

Building Size: 6,906

Zoning: R-100

Price / SF: \$54.30

### PROPERTY HIGHLIGHTS

- Sale includes 1 building totaling  $\pm 6,906$  SF
- Formerly Part of Angels For The Elderly: A 64 unit/64 bed stand-alone memory care campus made up of four 16-unit buildings located on  $\pm 3.2$  Acres
- Great condition- just recently shut down within the past 4 months
- Located in prime location adjacent to Publix, Starbucks, NAPA Auto Parts, Shane's Rib Shack, Sol Restaurant & many more
- Situated near several established neighborhoods: Dalraida, Johnstown, Forest Hills, College Grove, Bellehurst and Fox Hollow
- Located just off of Atlanta Highway with traffic counts of  $\pm 33,294$
- $\pm 1.7$  miles from Gunter Annex
- $\pm 2.6$  miles from I-85
- $\pm 3.8$  miles from Downtown Montgomery
- $\pm 6.3$  miles from Maxwell Air Force Base: Serving 25,000 Active Duty, Guard, Reserves, Contractors, and Retirees. The Air Force University is attended by over 20,000 annually

#### JON MASTERS, CCIM

334.387.2724  
Jmasters@mcrmpm.com

#### MOORE COMPANY REALTY

312 Catoma St #200, Montgomery, AL 36104  
334.262.1958 | moorecompanyrealty.com



# 48 ANGELS COURT

MONTGOMERY, AL 36109

Aerial Photo



JON MASTERS, CCIM

334.387.2724

Jmasters@mcrmpm.com

MOORE COMPANY REALTY

312 Catoma St #200, Montgomery, AL 36104

334.262.1958 | moorecompanyrealty.com





# 48 ANGELS COURT

MONTGOMERY, AL 36109

## Floor Plans

### UNIT FLOOR PLANS

Studio One



Studio Two



Studio Three



\*Unit Sizes Vary

JON MASTERS, CCIM

334.387.2724

Jmasters@mcrmpm.com

MOORE COMPANY REALTY

312 Catoma St #200, Montgomery, AL 36104

334.262.1958 | moorecompanyrealty.com



# 48 ANGELS COURT

MONTGOMERY, AL 36109

## Additional Photos



**JON MASTERS, CCIM**

334.387.2724

Jmasters@mcrmpm.com

**MOORE COMPANY REALTY**

312 Catoma St #200, Montgomery, AL 36104

334.262.1958 | moorecompanyrealty.com





# 48 ANGELS COURT

MONTGOMERY, AL 36109

## Demographics

### DEMOGRAPHIC SUMMARY

52 Angels Ct, Montgomery, Alabama, 36109

Ring of 1 mile

#### KEY FACTS

8,077

Population



3,583

Households

50.0

Median Age

\$44,633

Median Disposable Income

#### EDUCATION

6%

No High School Diploma



29%

High School Graduate



31%

Some College



34%

Bachelor's/Grad/Prof Degree

#### INCOME



\$53,869

Median Household Income



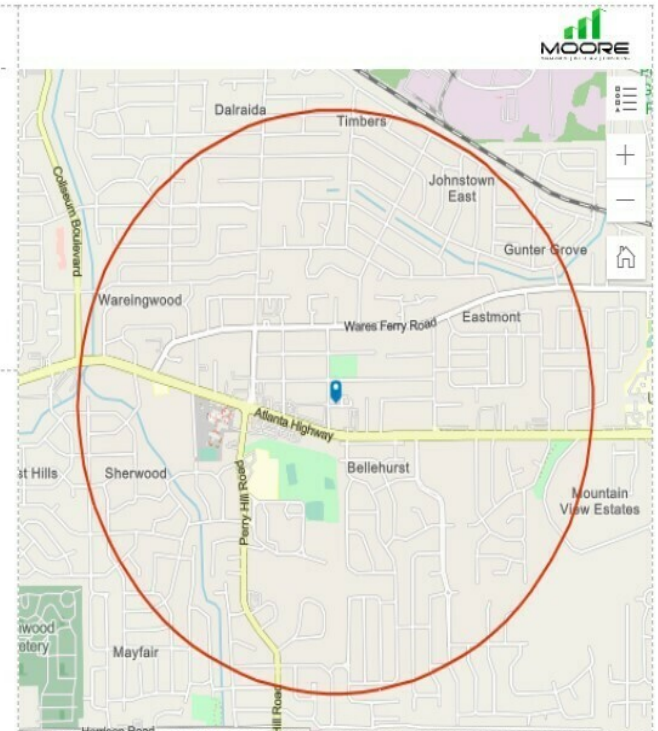
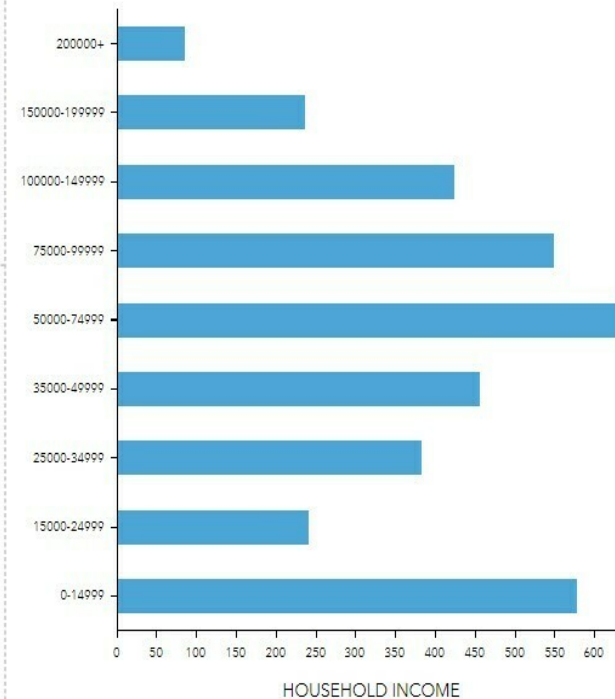
\$32,321

Per Capita Income



\$155,992

Median Net Worth



#### EMPLOYMENT



White Collar

70%



Blue Collar

18%



Services

17%

2.4%

Unemployment Rate

JON MASTERS, CCIM

334.387.2724

Jmasters@mcrmpm.com

MOORE COMPANY REALTY

312 Catoma St #200, Montgomery, AL 36104

334.262.1958 | moorecompanyrealty.com

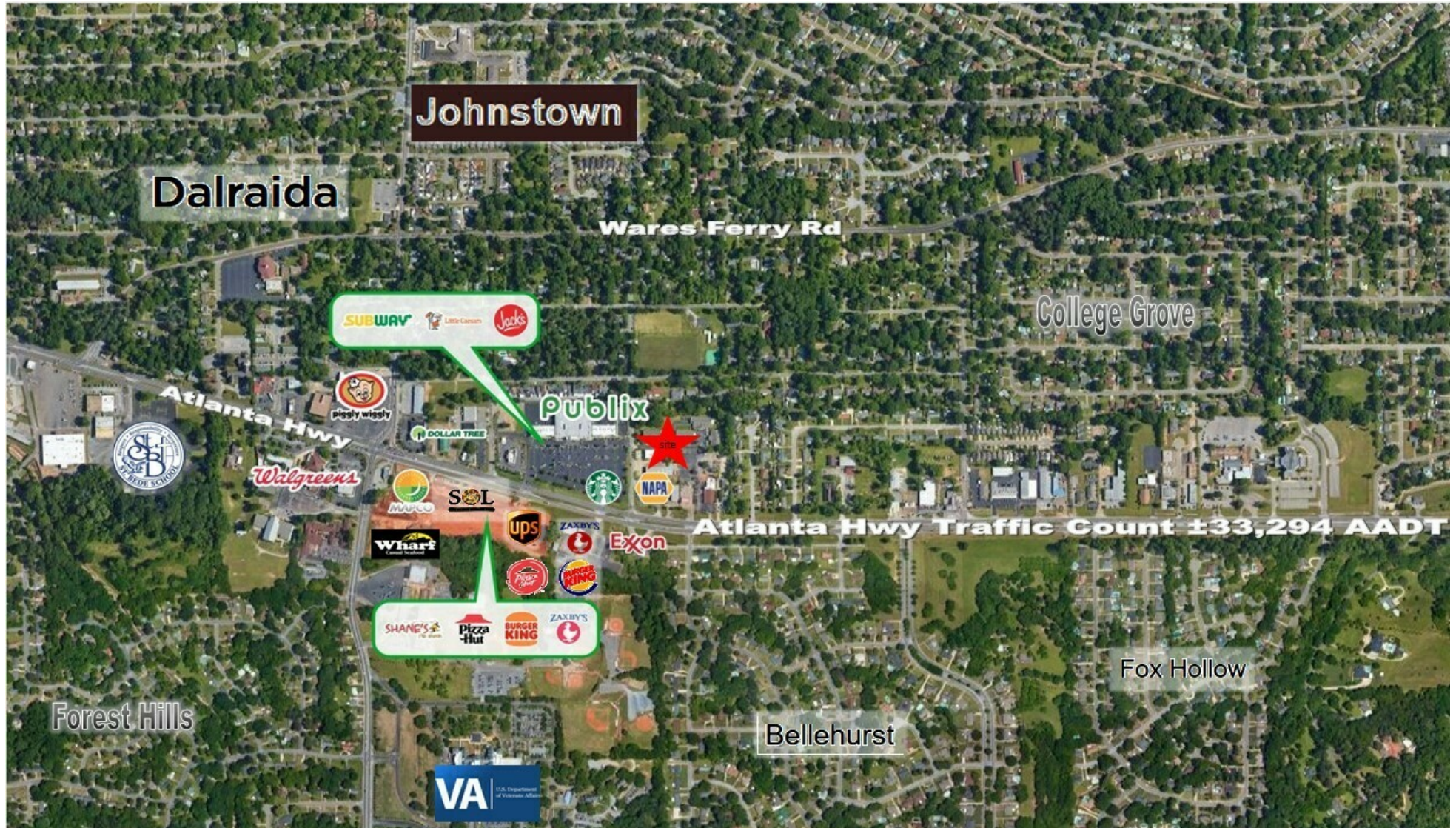




# 48 ANGELS COURT

MONTGOMERY, AL 36109

## Retail Map



JON MASTERS, CCIM

334.387.2724

Jmasters@mcrmpm.com

MOORE COMPANY REALTY

312 Catoma St #200, Montgomery, AL 36104

334.262.1958 | moorecompanyrealty.com

