

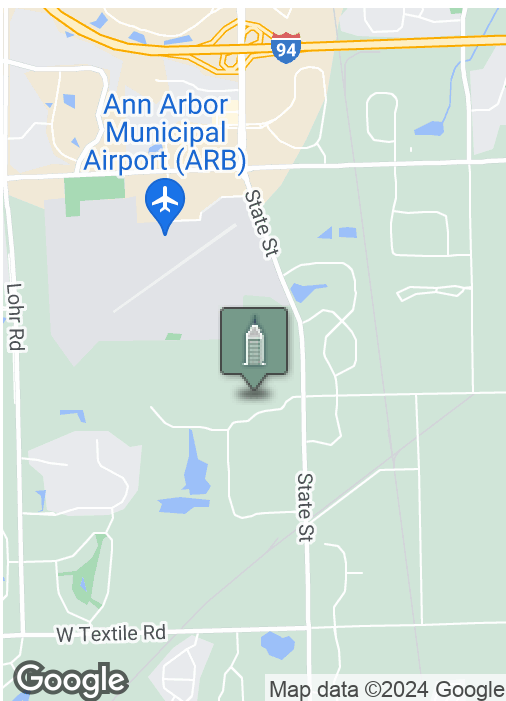
Avis Farms Office - Pittsfield Twp

540 AVIS DRIVE, STE N, ANN ARBOR, MI 48108



Swisher
COMMERCIAL

FOR LEASE



SUMMARY

Suite N
Lease Rate:

\$10.00 SF/yr
Includes utilities

Available SF:

1,520 SF

Zoning:

BD (Business District)

PROPERTY HIGHLIGHTS

- Avis Farms Business Park
- Located off busy S. State St. near the I-94 Interchange
- Ten minutes from downtown Ann Arbor and University of Michigan campus
- Lower level office suite with open plan and three private offices
- Well maintained grounds and ample at the door parking
- Immediate availability

***Building
relationships.***

208 East Washington Street Ann Arbor, MI 48104

734.663.0501

Bart Wise

734.358.0354

BARTW@SWISHERCOMMERCIAL.COM

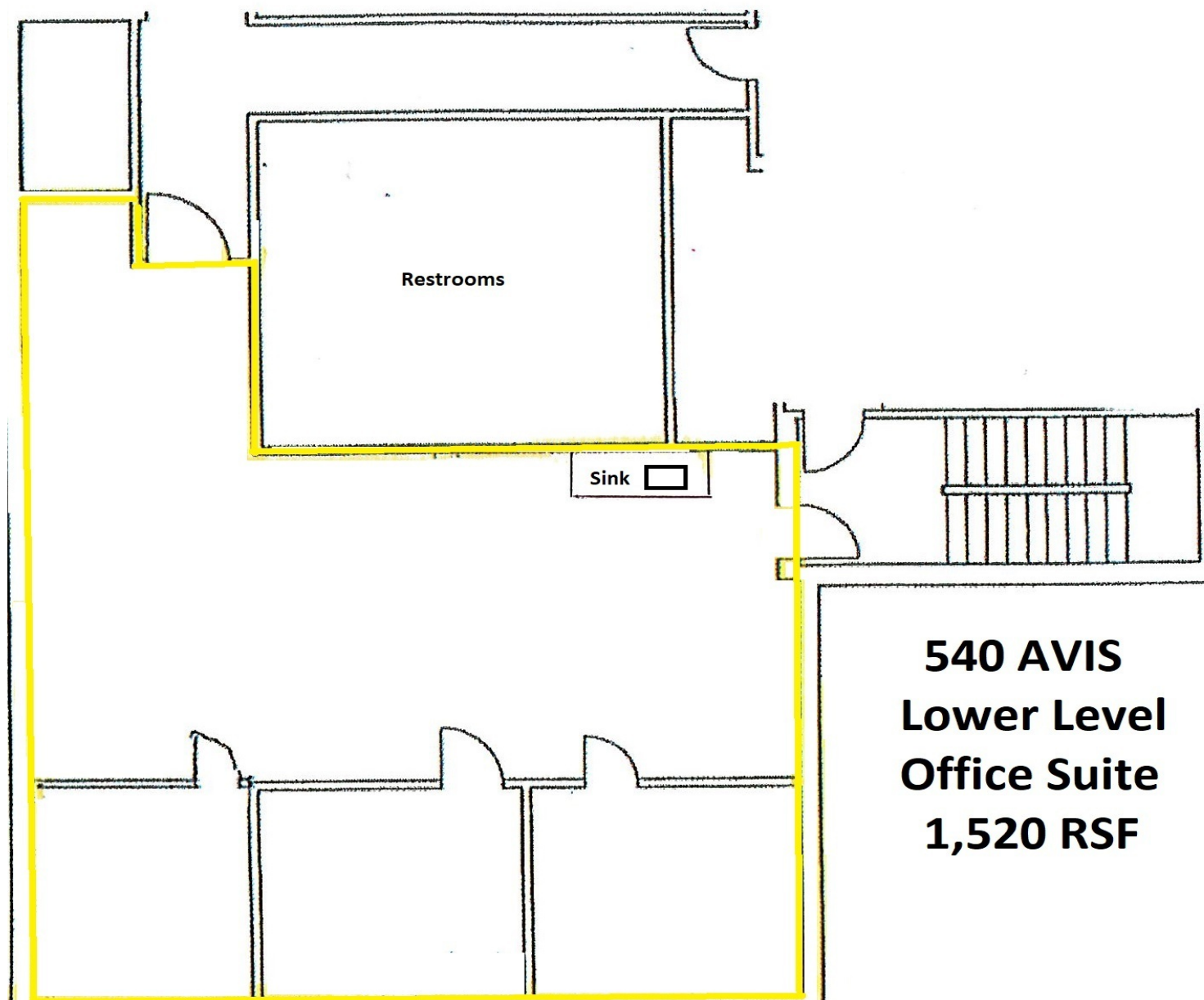
SWISHERCOMMERCIAL.COM

Avis Farms Office Suite for Lease - Pittsfield Twp

540 AVIS DRIVE, STE N, ANN ARBOR, MI 48108



Swisher
COMMERCIAL



**540 AVIS
Lower Level
Office Suite
1,520 RSF**

***Building
relationships.***

208 East Washington Street Ann Arbor, MI 48104

734.663.0501

Bart Wise

734.358.0354

BARTW@SWISHERCOMMERCIAL.COM

SWISHERCOMMERCIAL.COM

Avis Farms Office Suite for Lease - Pittsfield Twp

540 AVIS DRIVE, STE N, ANN ARBOR, MI 48108



***Building
relationships.***

208 East Washington Street Ann Arbor, MI 48104

734.663.0501

Bart Wise

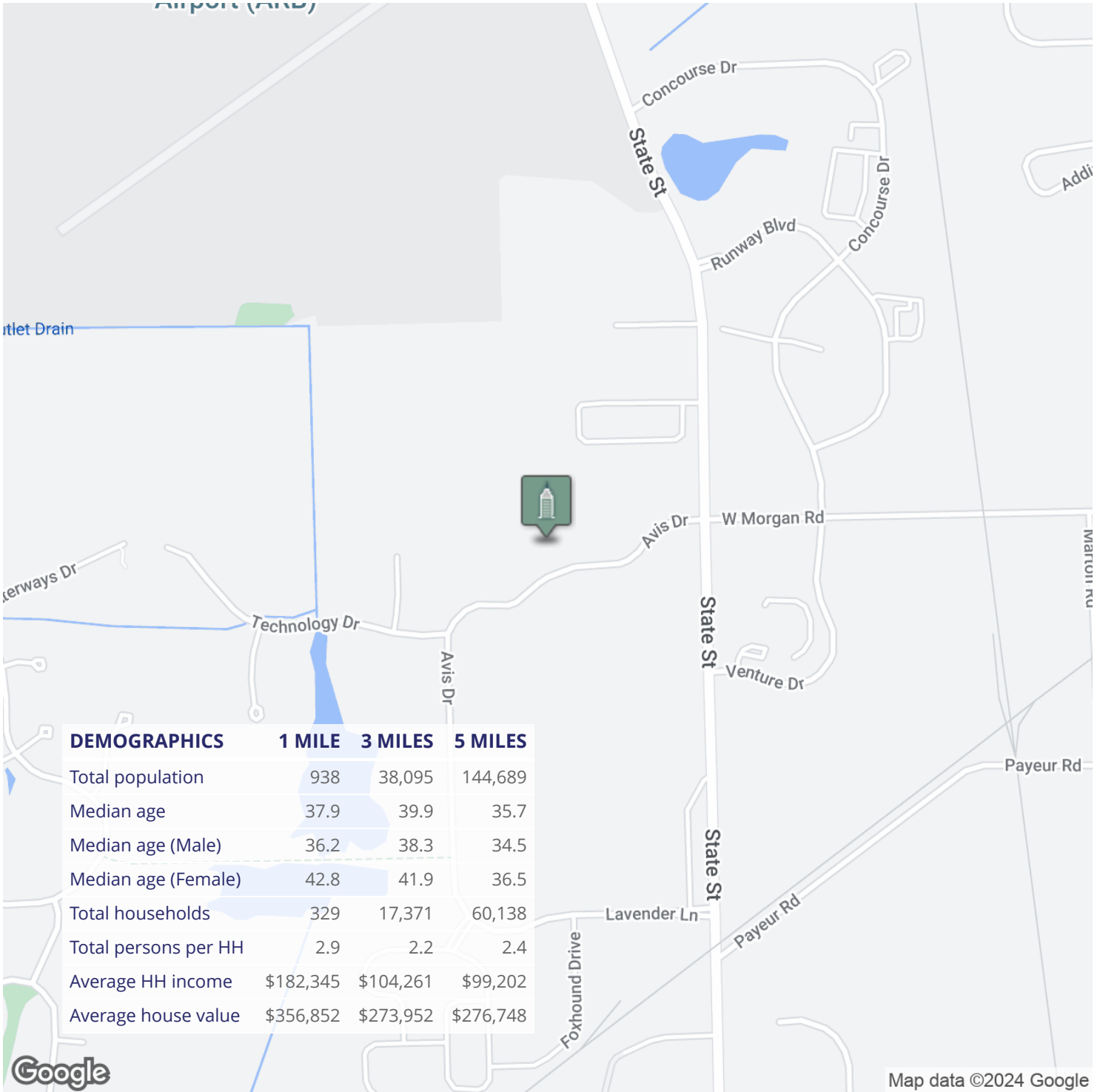
734.358.0354

BARTW@SWISHERCOMMERCIAL.COM

SWISHERCOMMERCIAL.COM

Avis Farms Office Suite for Lease - Pittsfield Twp

540 AVIS DRIVE, STE N, ANN ARBOR, MI 48108



**Building
relationships.**

208 East Washington Street Ann Arbor, MI 48104

734.663.0501

Bart Wise

734.358.0354

BARTW@SWISHERCOMMERCIAL.COM

SWISHERCOMMERCIAL.COM