



TRI STATE  
COMMERCIAL®  
REAL ESTATE EXPERTS

For Lease



# Retail Space with Basement for Lease

Fully Leased

1314 Bergen Street • Brooklyn • NY

For Pricing Call: 718-437-6100

**Shlomi Bagdadi**  
📞 718.437.6100  
sb@tristatecr.com

**Robert Mitchell**  
📞 718.437.6100 x102  
Robert.M@TriStateCR.com



## Location Overview

Located in the Crown Heights neighborhood of Brooklyn between Kingston Ave & Revere Pl near the Kingston - Throop Ave subway station.

Nearest Transit: A & C trains at Kingston - Throop Ave and the B43 & B65 bus lines,

Nearby tenants include Kingston Public House, MEAT, King Tai, Super Foodtown, McDonald's, Walgreens, Island Pops, Sollar Tree, Daughter, Boeuf & Bun, Grandma's Kitchen, Brooklyn Children's Museum, and more!

## Main Highlights

- ▶ Basement
- ▶ 13 ft ceilings
- ▶ 20 ft of frontage
- ▶ Possibility to vent

FOR LEASE • Fully Leased • For Pricing

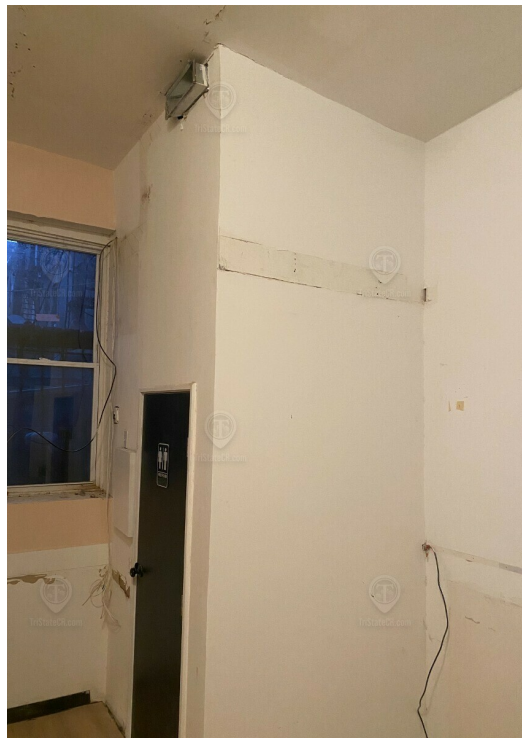
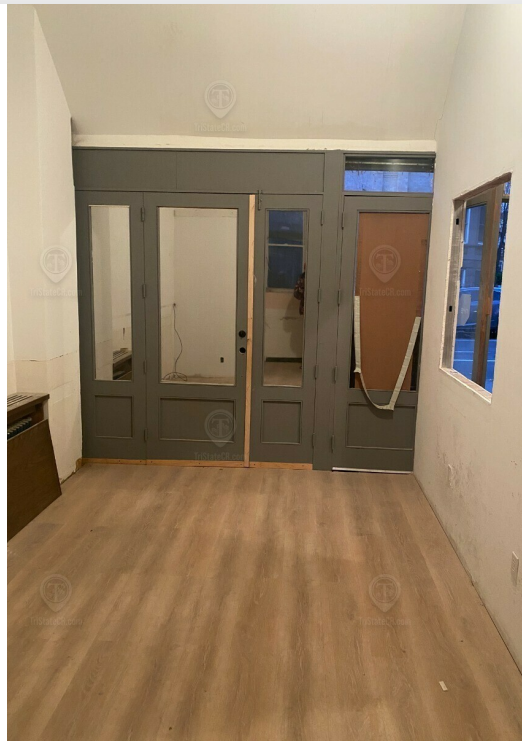
**Call: 718-437-6100**

**Shlomi Bagdadi**  
☎ 718.437.6100  
sb@tristatecr.com

**Robert Mitchell**  
☎ 718.437.6100 x102  
Robert.M@TriStateCR.com

Broker is relying on Landlord or other Landlord-supplied sources for the accuracy of said information and has no knowledge of the accuracy of it. Broker makes no representation and/or warranty, expressed or implied, as to the accuracy of such information.





FOR LEASE • Fully Leased • For Pricing

**Call: 718-437-6100**

**Shlomi Bagdadi**  
☎ 718.437.6100  
sb@tristatecr.com

**Robert Mitchell**  
☎ 718.437.6100 x102  
Robert.M@TriStateCR.com

Broker is relying on Landlord or other Landlord-supplied sources for the accuracy of said information and has no knowledge of the accuracy of it. Broker makes no representation and/or warranty, expressed or implied, as to the accuracy of such information.



TriStateCR.com

# Retailer Map

1314 Bergen Street, Brooklyn, NY 11213



Map data  
©2024  
Google

FOR LEASE • Fully Leased • For Pricing

**Call: 718-437-6100**

**Shlomi Bagdadi**  
📞 718.437.6100  
sb@tristatecr.com

**Robert Mitchell**  
📞 718.437.6100 x102  
Robert.M@TriStateCR.com

Broker is relying on Landlord or other Landlord-supplied sources for the accuracy of said information and has no knowledge of the accuracy of it. Broker makes no representation and/or warranty, expressed or implied, as to the accuracy of such information.

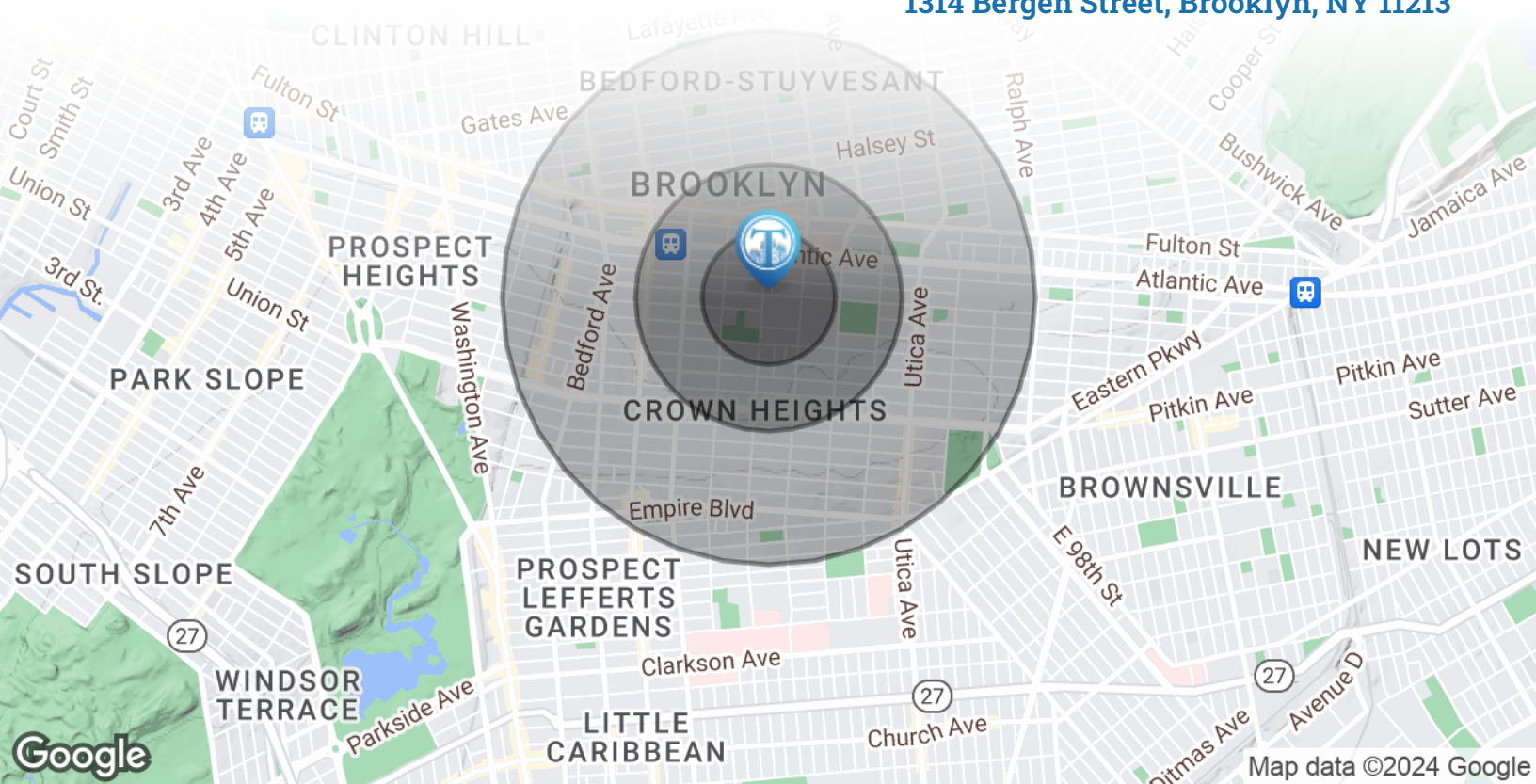




TriStateCR.com

# Area Demographics

1314 Bergen Street, Brooklyn, NY 11213



## POPULATION

### 0.25 MILES

### 0.5 MILES

### 1 MILE

Total Population	12,335	46,120	195,523
Average Age	38.2	36.3	35.1
Average Age (Male)	35.5	34.7	33.8
Average Age (Female)	41.4	38.3	36.9



195,523

People within 1 Mile

## HOUSEHOLDS & INCOME

### 0.25 MILES

### 0.5 MILES

### 1 MILE

Total Households	5,592	20,809	87,417
# of Persons per HH	2.2	2.2	2.2
Average HH Income	\$75,535	\$82,180	\$81,571
Average House Value	\$750,035	\$850,765	\$815,975



\$81,571

Avg Household Income

FOR LEASE • Fully Leased • For Pricing

Call: 718-437-6100

**Shlomi Bagdadi**  
📞 718.437.6100  
sb@tristatecr.com

**Robert Mitchell**  
📞 718.437.6100 x102  
Robert.M@TriStateCR.com

Broker is relying on Landlord or other Landlord-supplied sources for the accuracy of said information and has no knowledge of the accuracy of it. Broker makes no representation and/or warranty, expressed or implied, as to the accuracy of such information.

For Lease



TriStateCR.com

# 1,000 SF | 1314 Bergen St | Retail Space with Basement for Lease

Fully Leased • For Pricing **Call: 718-437-6100**

1314 Bergen Street • Brooklyn • NY

**Shlomi Bagdadi**

📞 718.437.6100

sb@tristatecr.com

**Robert Mitchell**

📞 718.437.6100 x102

Robert.M@TriStateCR.com