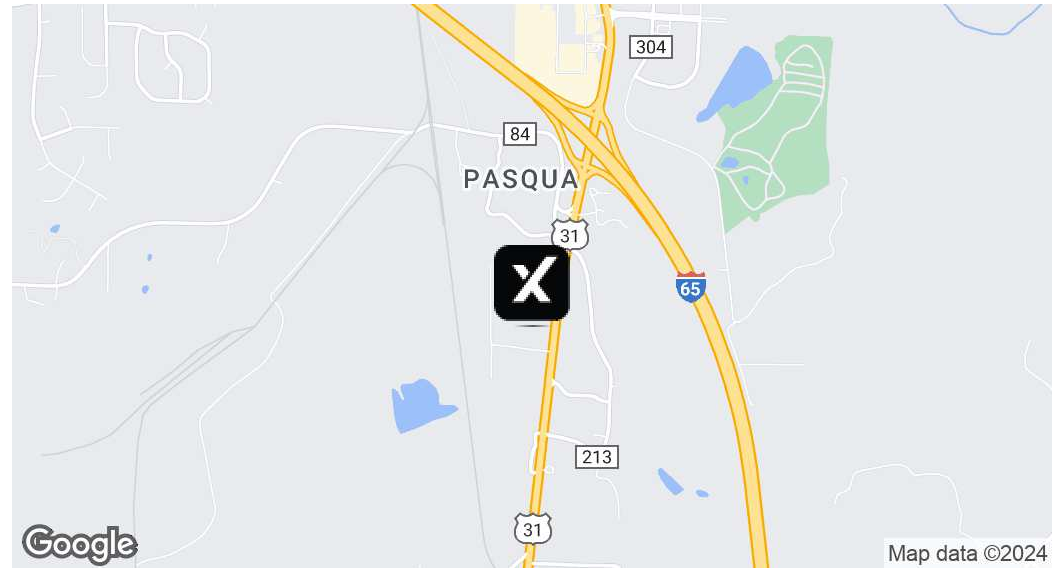


# FOR SALE | Calera Industrial Warehouse

100 Commercial Park Dr, Calera, AL 35040



## Offering Summary

Sale Price:	\$4,200,000
Building Size:	18,340 SF
Lot Size:	10,205,193,240 SF
Price / SF:	\$229.01
Year Built:	2007
Zoning:	M1
Market:	Birmingham - Hoover MSA
Submarket:	Calera

## Property Overview

9.11 acres with three buildings in excellent condition ready for your business now. Conveniently located .5 mile off of I-65 in

Calera South Industrial Park. Over 18,000 sq ft available with plenty of room for expansion. This location will serve your growing business for years to come or a great opportunity for investment property by leasing the buildings together or separately.

## Property Highlights

- .5 mile off major Interstate I-65
- Shelby County Alabama
- Over 9 acres
- 3 buildings
- Over 18,000 sq ft
- Fenced and gated.

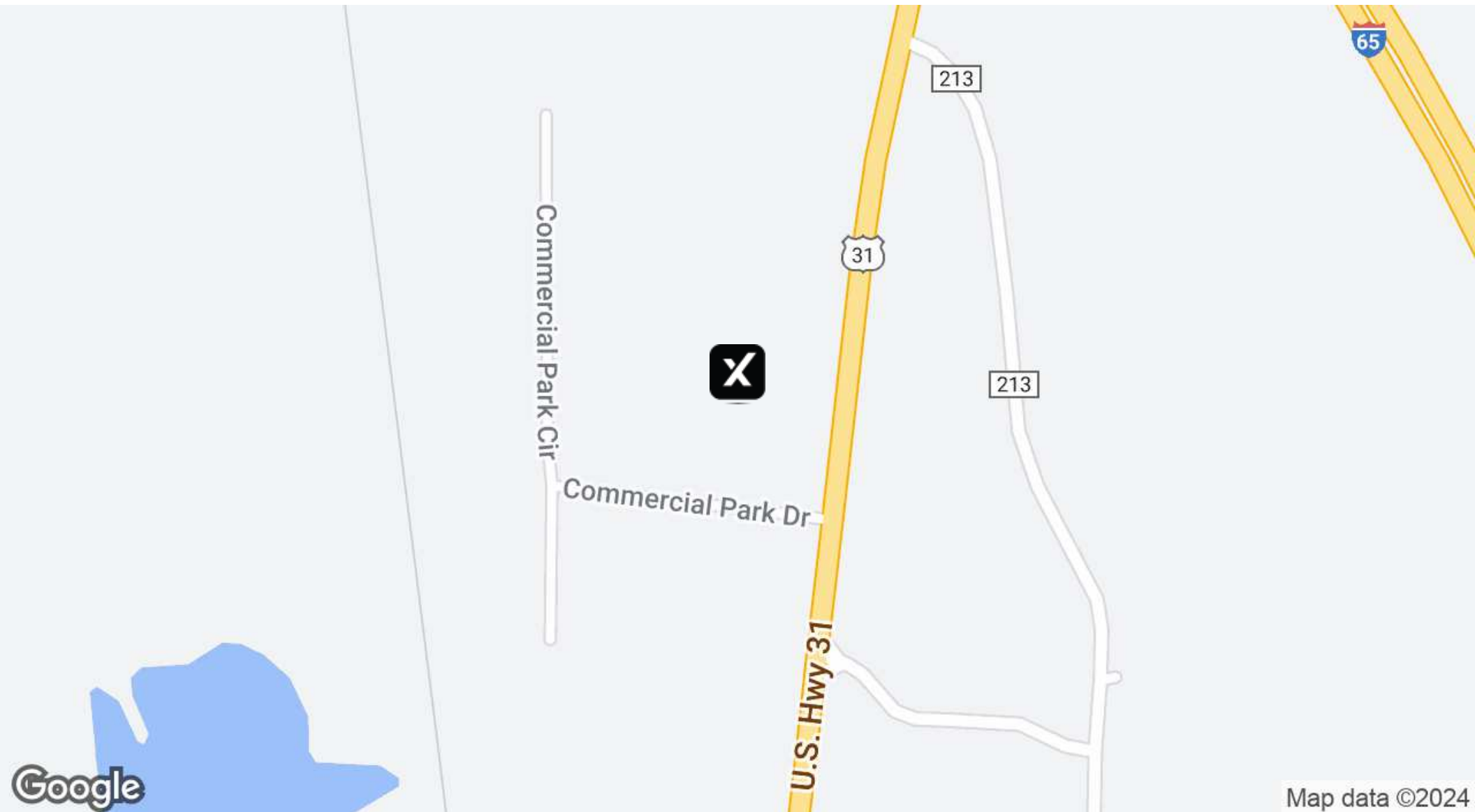
## Pam Reaves

205.365.3228  
pam.reaves@expcommercial.com



# FOR SALE | Calera Industrial Warehouse

100 Commercial Park Dr, Calera, AL 35040



**Pam Reaves**

205.365.3228

[pam.reaves@expcommercial.com](mailto:pam.reaves@expcommercial.com)

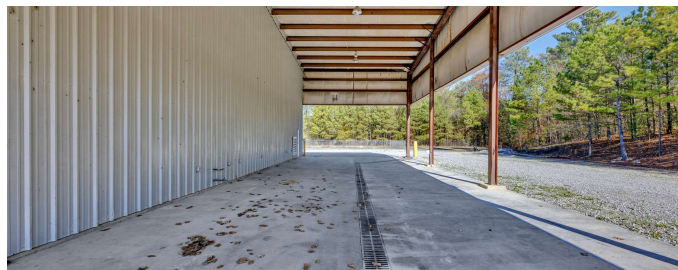
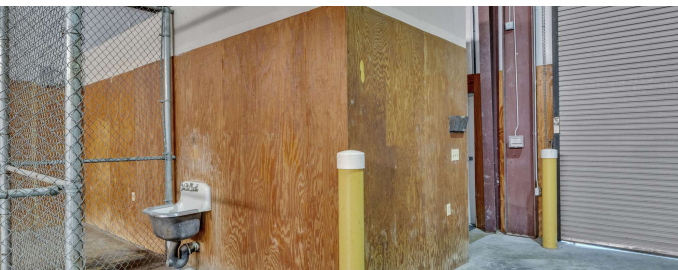
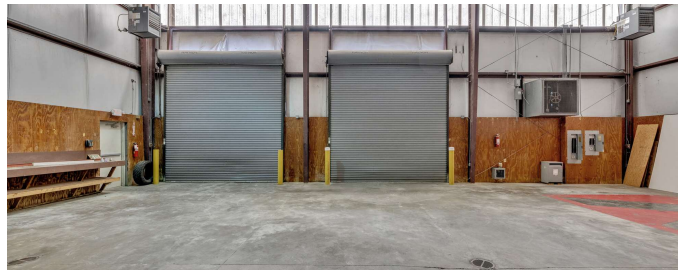
**exp**<sup>TM</sup>  
COMMERCIAL

eXp Commercial, LLC, its direct and indirect parents and their subsidiaries (together, "We") obtained the information above from sources believed to be reliable, however, We have not verified its accuracy and make no guarantee, warranty or representation, expressed or implied, about such information. The information contained above is submitted subject to the possibility of errors, omissions, price changes, rental or other conditions, prior sale, lease or financing, or withdrawal without notice. Any projections, opinions, assumptions or estimates of the information contained above or provided in connection therewith, either expressed or implied, are for example only, and they may not represent current or future performance of the subject property. You, together with your tax and legal advisors, should conduct your own thorough investigation of the subject property and potential investment.



# FOR SALE | Calera Industrial Warehouse

100 Commercial Park Dr, Calera, AL 35040



**Pam Reaves**

205.365.3228

[pam.reaves@expcommercial.com](mailto:pam.reaves@expcommercial.com)

**exp**<sup>TM</sup>  
COMMERCIAL

eXp Commercial, LLC, its direct and indirect parents and their subsidiaries (together, "We") obtained the information above from sources believed to be reliable, however, We have not verified its accuracy and make no guarantee, warranty or representation, expressed or implied, about such information. The information contained above is submitted subject to the possibility of errors, omissions, price changes, rental or other conditions, prior sale, lease or financing, or withdrawal without notice. Any projections, opinions, assumptions or estimates of the information contained above or provided in connection therewith, either expressed or implied, are for example only, and they may not represent current or future performance of the subject property. You, together with your tax and legal advisors, should conduct your own thorough investigation of the subject property and potential investment.

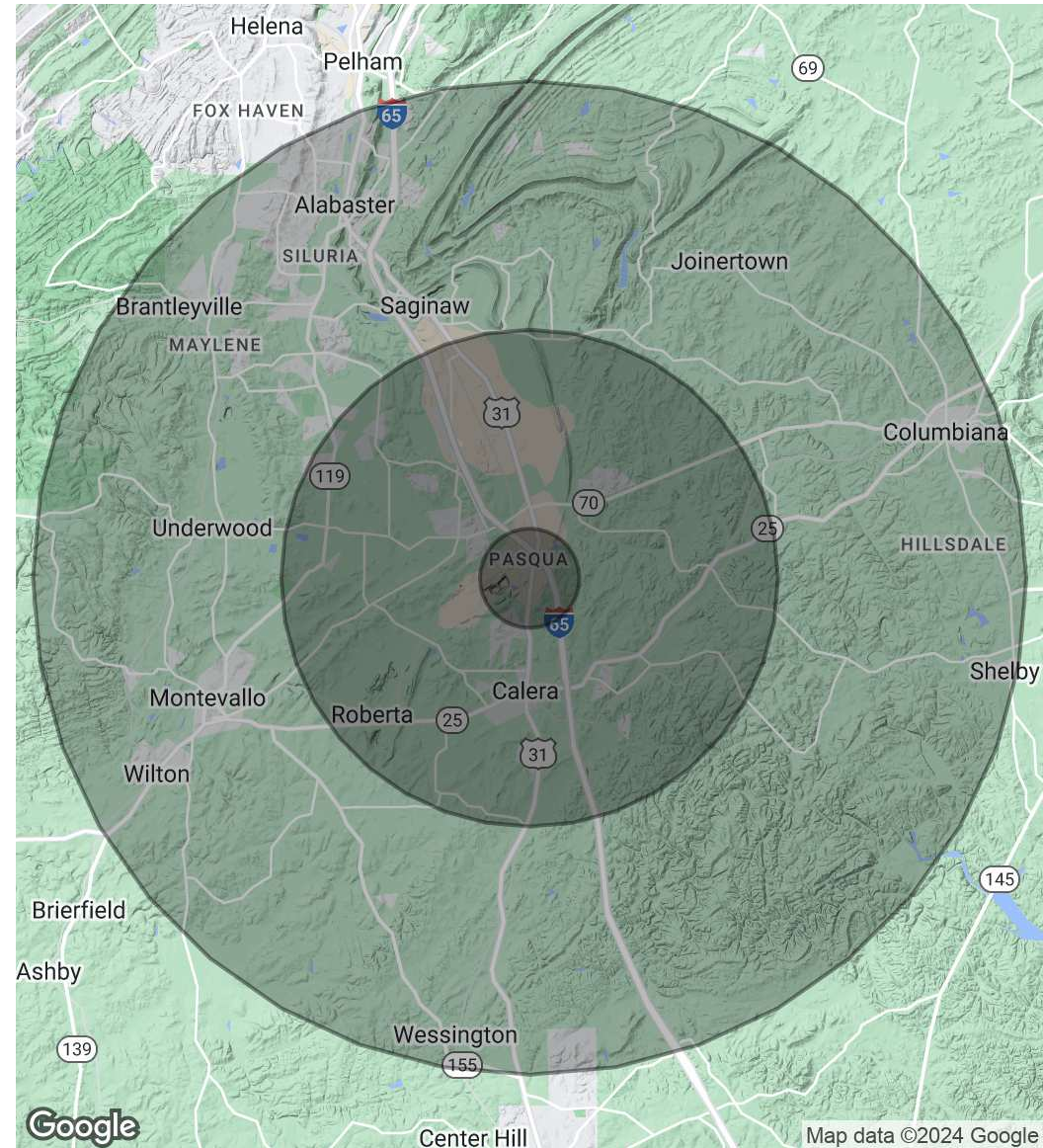


# FOR SALE | Calera Industrial Warehouse

100 Commercial Park Dr, Calera, AL 35040

Population	1 Mile	5 Miles	10 Miles
Total Population	747	21,945	76,370
Average Age	34.9	36.8	37.9
Average Age (Male)	39.7	36.7	37.1
Average Age (Female)	34.3	36.5	37.6
Households & Income	1 Mile	5 Miles	10 Miles
Total Households	288	8,778	29,620
# of Persons per HH	2.6	2.5	2.6
Average HH Income	\$65,089	\$73,629	\$74,573
Average House Value	\$164,333	\$162,789	\$171,776

2020 American Community Survey (ACS)



Pam Reaves

205.365.3228

pam.reaves@expcommercial.com

**exp**<sup>TM</sup>  
COMMERCIAL

eXp Commercial, LLC, its direct and indirect parents and their subsidiaries (together, "We") obtained the information above from sources believed to be reliable, however, We have not verified its accuracy and make no guarantee, warranty or representation, expressed or implied, about such information. The information contained above is submitted subject to the possibility of errors, omissions, price changes, rental or other conditions, prior sale, lease or financing, or withdrawal without notice. Any projections, opinions, assumptions or estimates of the information contained above or provided in connection therewith, either expressed or implied, are for example only, and they may not represent current or future performance of the subject property. You, together with your tax and legal advisors, should conduct your own thorough investigation of the subject property and potential investment.