

BLACK BUTTE MINE

248 acres
Esmeralda and Nye Counties of Nevada



COLDWELL BANKER
PREMIER REALTY
DEVELOPER SERVICES

Brian Krueger
Senior VP, Strategic Services
Coldwell Banker Premier Realty
702.234.4373
NRE License BS.19256.LLC
brian.krueger@cbvegas.com

John McClelland
Vice President, Research
Coldwell Banker Premier Realty
702.505.6354
NRE License S.0169443
john.mcclelland@cbcvegas.com



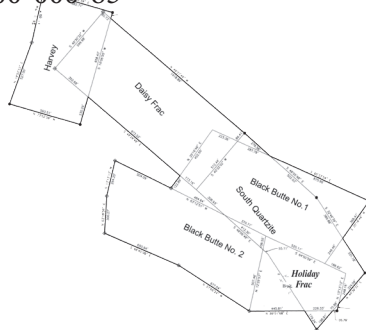
COLDWELL BANKER
COMMERCIAL
PREMIER

FEATURES

- Assets are located within Esmeralda and Nye counties of Nevada
- 248 acres, deeded and fee simple
- 100% ownership of both above and below ground mineral rights
- Over 1 million tons of material piles above the surface
- Precious metal resource reports and assays from reputable third parties
- Graded county roads providing direct access between Goldfield and Black Butte mine

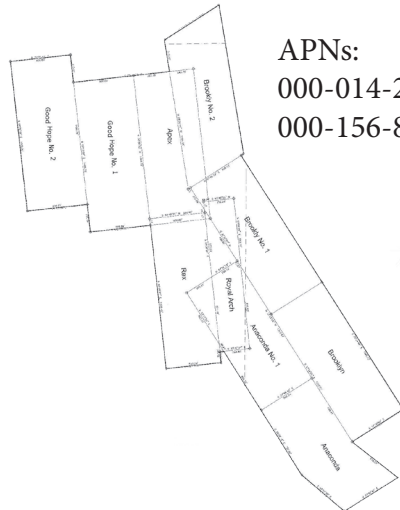
Esmeralda County

APN:
000-000-85

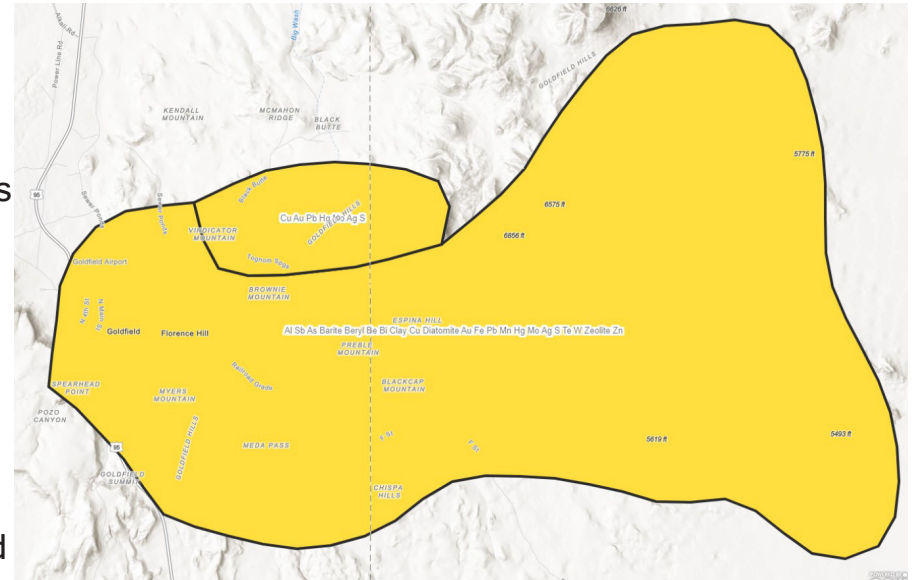


Nye County

APNs:
000-014-20
000-156-89

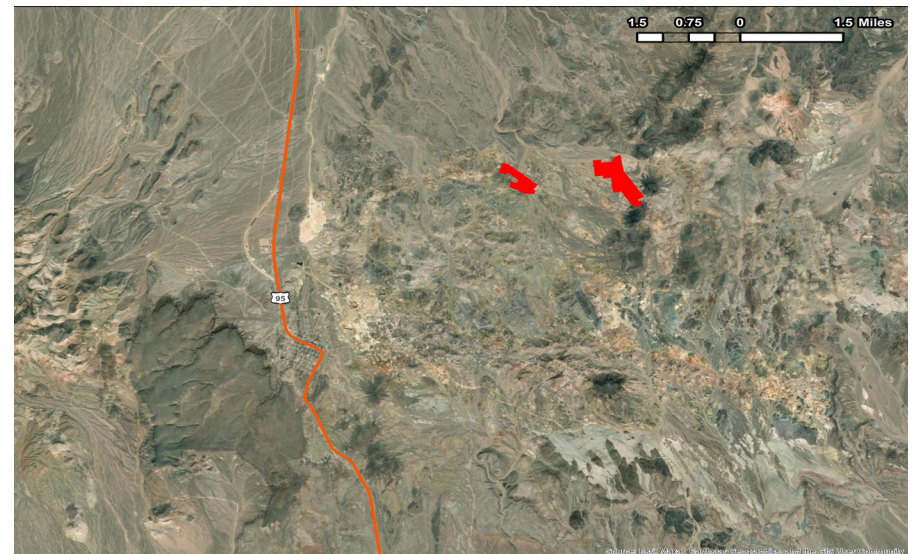


Historic Mining Districts Commodities & Occurrences - Goldfield



Source: Nevada Division of Minerals

<https://data-ndom.opendata.arcgis.com/pages/miningdistricts-commodities-occurrences>



HISTORY

Black Butte mine was first explored in the early 1900's. Goldfield was a very active mining district in the early 20th century and is well explored.

According to Ashley and Keith (1976), Goldfield "is the site of a late Oligocene and early Miocene volcanic center." In their report, they find that;

Preminalization structural development of the Goldfield volcanic center involved at least two, and possibly three, major structural events (Ashley, 1972). The first inferred

event was formation of a ring fracture bounding a small caldera or incipient caldera. This caldera or incipient caldera probably formed during extrusion of the earliest ash flow, found in the Oligocene Vindicator Rhyolite. Although covered by the early Miocene volcanic rocks, the trace of the ring fracture is inferred from the positions of known volcanic vents and intrusive centers. Vents and intrusive centers for various units occur at Black Butte, about 1.5 km southeast of Black Butte, Tognoni Mountain, just north of Espina Hill (Espina Breccia), Preble Mountain, in the main production area, and just northwest of Columbia Mountain (fig. 1). The trace of the ring fracture can be followed from Columbia Mountain north toward Kendall Mountain and then east through McMahon Ridge as a belt of fractures and hydrothermal alteration in the overlying Miocene volcanic rocks.

-Distribution of Gold and Other Metals in Silicified Rocks of the Goldfield Mining District, Nevada

GEOLOGICAL SURVEY PROFESSIONAL PAPER
843-B



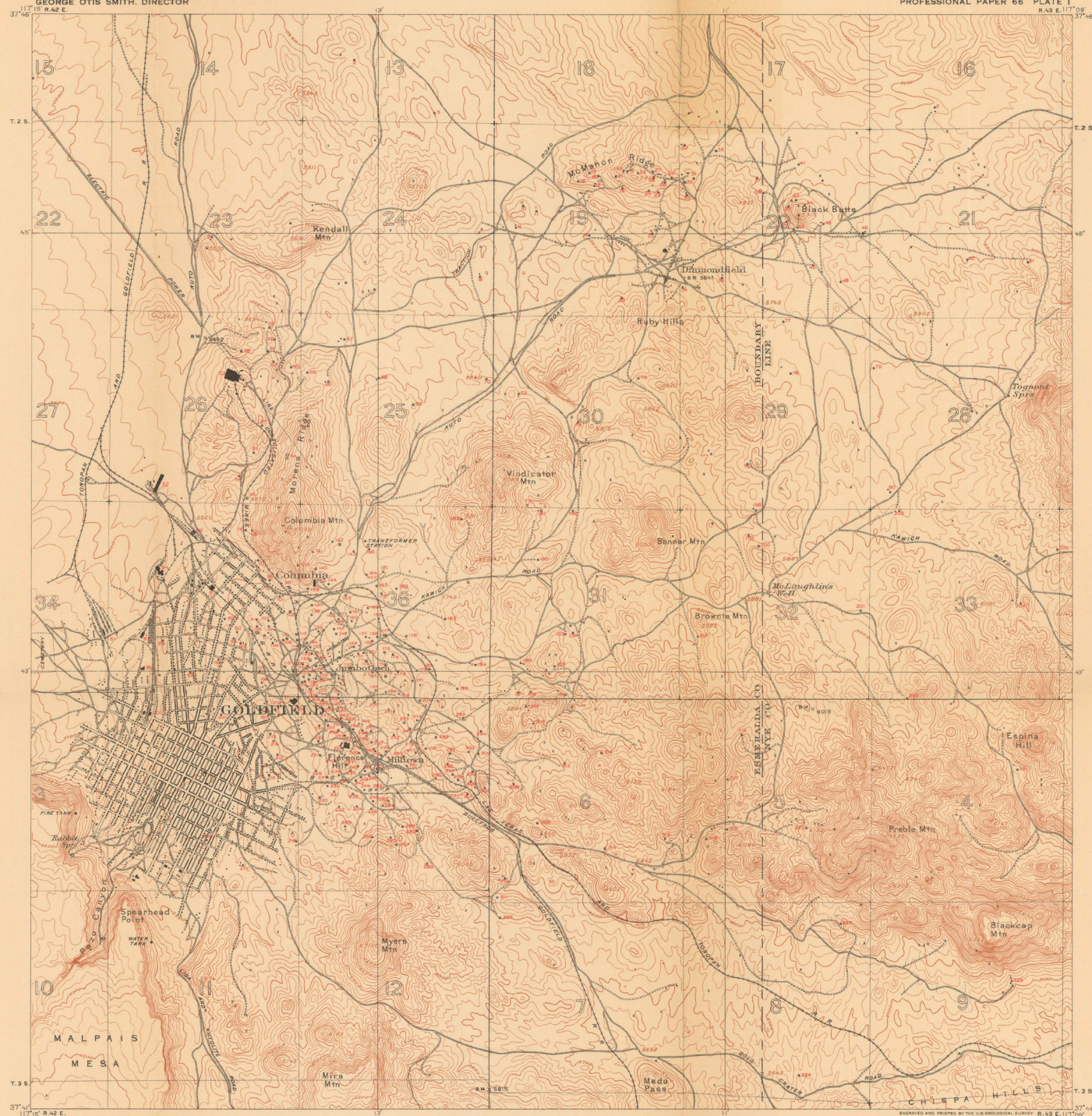
<https://special.library.unlv.edu/ark:/62930/d1vx06h23>

Smith, E. W. (Emory Willard), 1850-1941

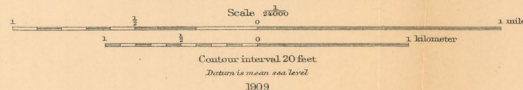
LIST OF SHAFTS, TUNNELS, MILLS, ETC.

The numbers run generally from left to right in ranks of sections from top to bottom. For alphabetic list see text. Where name of shaft has not been ascertained the name of the claim, if known, is inserted in parentheses.

- 1 Iowa
- 2 Goldbug
- 3 Irons
- 4 Daily West
- 5 Lucky Strike No. 1
- 6 Jubilee
- 7 Goldfield Extension
- 8 Oakes
- 9 Red Butte No. 1
- 10 Great Bend Annex
- 11 Faxon
- 12 Keane
- 13 (Great Bend No. 2)
- 14 Spokane
- 15 Great Bend (new)
- 16 Great Bend (old)
- 17 Great Bend Dragoon
- 18 Tropic (Daily L. & M.)
- 19 Great Bend Extension
- 20 Skylar
- 21 Faxon and Pugh
- 22 Golden Daisy
- 23 Daily Annex
- 24 Balch
- 25 (Daily Triangle 7)
- 26 Combined
- 27 Monroe
- 28 Daily (Truett)
- 29 Camp
- 30 Quarry
- 31 Gowan
- 32 Daily No. 1
- 33 Gold Coin
- 34 (Crescent)
- 35 Belmont
- 36 (Black Butte Extension)
- 37 Davis (old)
- 38 (Black Butte No. 1)
- 39 Black Butte Consolidated
- 40 Beaumont
- 41 Gordon & Outwater
- 42 Black Butte Tunnel
- 43 Quartz
- 44 (North Quartz)
- 45 Black Butte Bonanza
- 46 Midway-Panama
- 47 Bullhead
- 48 Black Butte Extension
- 49 Highland
- 50 Mammoth
- 51 (Red Rock)
- 52 Goldfield C. I. Mill
- 53 Goldfield Consolidated Mill
- 54 Mary
- 55 (Joshua)
- 56 (New)
- 57 (New)
- 58 (New)
- 59 (New)
- 60 (New)
- 61 (New)
- 62 (New)
- 63 (New)
- 64 (New)
- 65 (New)
- 66 (New)
- 67 Adams
- 68 General Washington
- 69 Diamond
- 70 Vindicator
- 71 Joshua Tunnel
- 72 Greater Nevada
- 73 (Lafayette)
- 74 Higginson
- 75 (New Chief)
- 76 American
- 77 Montezuma-Lee Dillon
- 78 Gold Flat
- 79 Goldfield-Federal
- 80 Aloha
- 81 Freight Depot
- 82 American Mill
- 83 Roundhouse, Las Vegas and Tonopah
- 84 Nevada Goldfield Mill
- 85 (New)
- 86 (New)
- 87 (New)
- 88 (New)
- 89 (New)
- 90 (New)
- 91 (New)
- 92 (New)
- 93 (New)
- 94 (New)
- 95 (New)
- 96 (New)
- 97 (New)
- 98 (New)
- 99 (New)
- 100 (New)
- 101 (New)
- 102 (New)
- 103 (New)
- 104 (New)
- 105 (New)
- 106 (New)
- 107 (New)
- 108 (New)
- 109 (New)
- 110 (New)
- 111 (New)
- 112 (New)
- 113 (New)
- 114 (New)
- 115 (New)
- 116 (New)
- 117 (New)
- 118 (New)
- 119 (New)
- 120 (New)
- 121 (New)
- 122 (New)
- 123 (New)
- 124 (New)
- 125 (New)
- 126 (New)
- 127 (New)
- 128 (New)
- 129 (New)
- 130 (New)
- 131 (New)
- 132 (New)
- 133 (New)
- 134 (New)
- 135 (New)
- 136 (New)
- 137 (New)
- 138 (New)
- 139 (New)
- 140 (New)
- 141 (New)
- 142 (New)
- 143 (New)
- 144 (New)
- 145 (New)
- 146 (New)
- 147 (New)
- 148 (New)
- 149 (New)
- 150 (New)
- 151 (New)
- 152 (New)
- 153 (New)
- 154 (New)
- 155 (New)
- 156 (New)
- 157 (New)
- 158 (New)
- 159 (New)
- 160 (New)
- 161 (New)
- 162 (New)



TOPOGRAPHIC MAP OF THE GOLDFIELD DISTRICT, NEVADA
WITH LIST AND LOCATIONS OF SHAFTS



37.751152, -117.178474
37°45'06.0"N 117°07'03.4"W

<https://maps.app.goo.gl/Yisnz543cmBro6qP8>

Esri, HERE, Garmin, (c) OpenStreetMap contributors, and the GIS user community. Sources: Esri, HERE, Garmin, Intermap, increment P Corp., GEBCO, USGS, FAO, NPS, NRCAN, GeoBase, IGN, Kadaster NL, Ordnance Survey, Esri Japan, METI, Esri China (Hong Kong), (c) OpenStreetMap contributors, and the GIS User Community

<https://maps.app.goo.gl/Yisnz543cmBro6qP8>

Esri, HERE, Garmin, (c) OpenStreetMap contributors, and the GIS user community. Sources: Esri, HERE, Garmin, Intermap, increment P Corp., GEBCO, USGS, FAO, NPS, NRCAN, GeoBase, IGN, Kadaster NL, Ordnance Survey, Esri Japan, METI, Esri China (Hong Kong), (c) OpenStreetMap contributors, and the GIS User Community

Big Wash

625 312.5 0 625 Yards

Approximate Claim Locations



A recent survey has been completed and can be made available to interested parties



OFFERING

The asset has parcels in both Esmeralda and Nye Counties of Nevada. This is a known region for gold extraction and there are tailings from shaft excavations visible on site. There are 67.8 acres within Esmeralda and approximately 180 in Nye County. The mine is approximately three hours driving time from Las Vegas and just fifteen minutes on country roads from Goldfield.

While investigated for gold and within a famous gold mining district, there are indications of rare earth elements that are also present.

Black Butte Mine is deeded acreage with mineral rights

Offered at:

\$1,499,900
\$6,048/Acre

John McClelland

Vice President, Research

702 505 6354

License S.0169443

John.McClelland@cbvegas.com

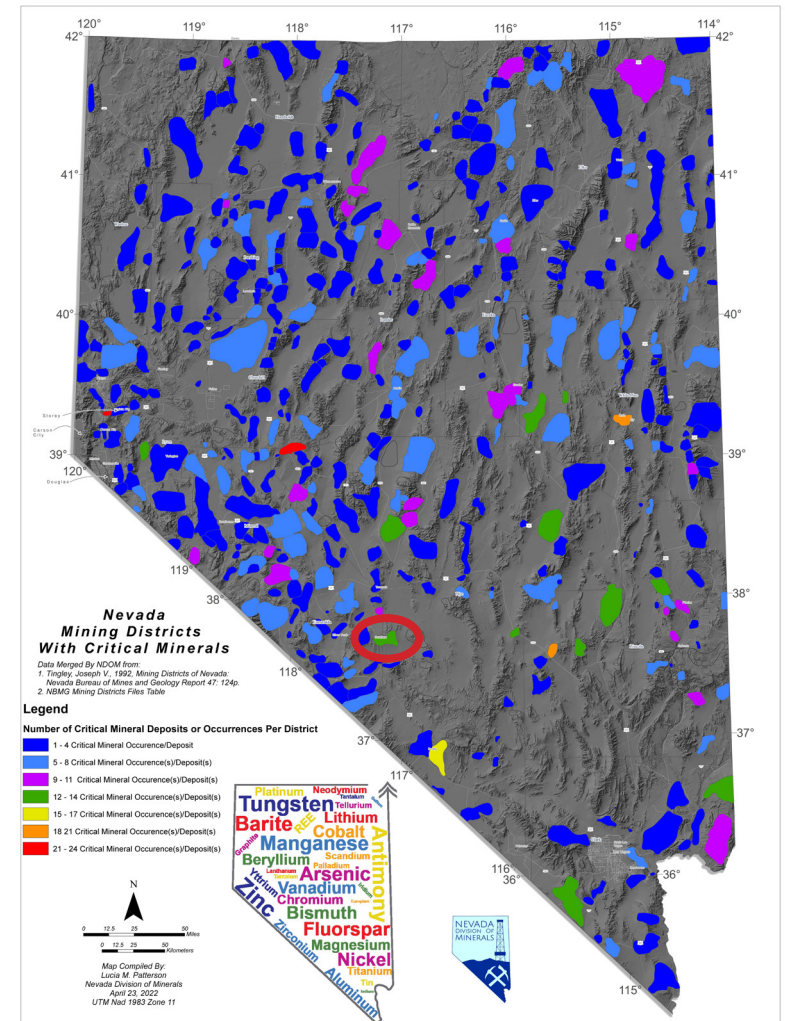
Brian Krueger

Senior VP, Strategic Services

702 234 4373

NRE License BS.19256.LLC

Brian.Krueger@cbvegas.com



Nevada is known for minerals but is becoming a more important component source of the materials that drive the modern economy. While the Goldfield region is known for gold, as the name suggests, rare earths and other elements are found within the area and other parts of the State.