

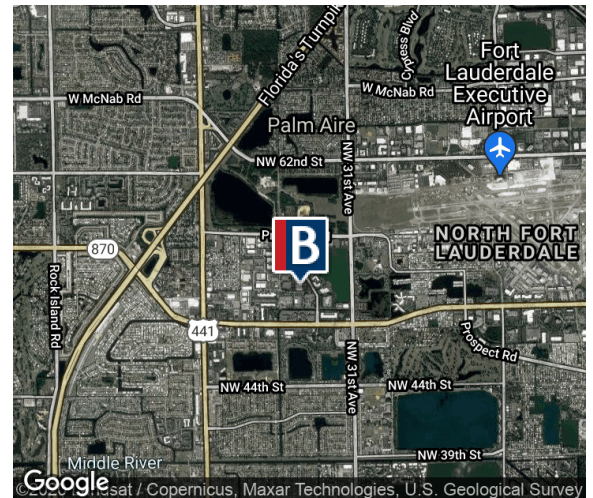
# PALM CROSSING SOUTH

3350 NW 53rd, Fort Lauderdale, FL 33309



## FEATURES

- Bay 302-306 - 10,665 +/- SF
- Rental rates available upon request
- Located in master planned business park
- Campus style – business park setting
- Ample parking Proximity to I-95 & Fla. Turnpike - centrally located w/ quick access to restaurants, hotels, banking and Fort Lauderdale Executive Airport (FXE)
- Located just north of Commercial Boulevard close to NW 33rd Avenue and Prospect Road
- Convenient access from I-95 and the Florida Turnpike



**For more information, or to schedule a tour, please contact:**

**Jonathan Thiel**  
Senior Sales Associate  
954.652.2020  
jthiel@bergercommercial.com

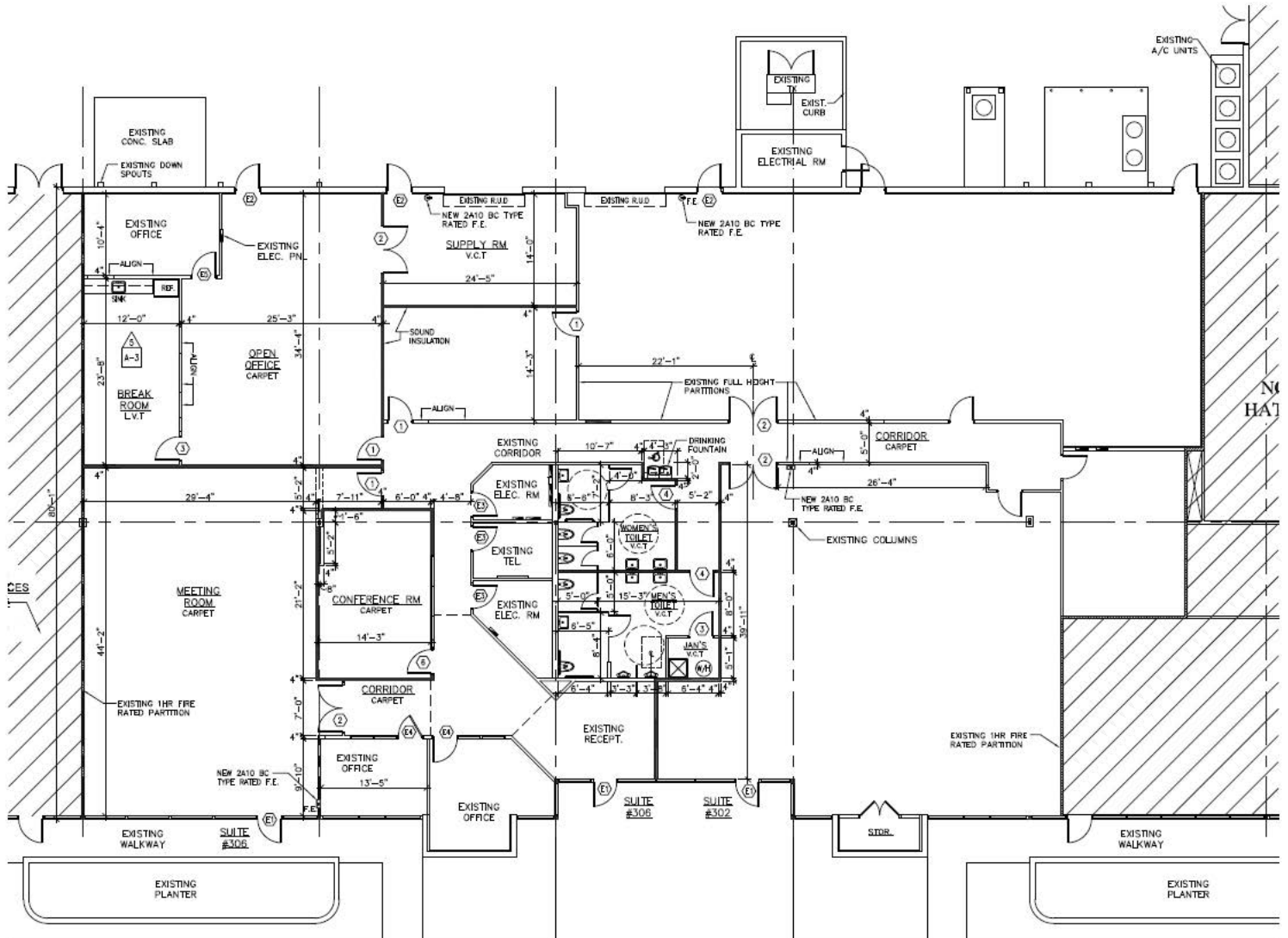
**Daniel Forman**  
Sales Associate  
954.652.2004  
dforman@bergercommercial.com

**Keith R. Graves, CCIM**  
Senior Vice President  
954.652.2031  
kgraves@bergercommercial.com



# PALM CROSSING SOUTH

3350 NW 53rd, Fort Lauderdale, FL 33309



## SPACE FEATURES

- 50 warehouse / 50% office- lab
- 3-Phase power
- Exterior signage
- 100% HVAC
- Backup generator

For more information, or to schedule a tour, please contact:

Jonathan Thiel  
Senior Sales Associate  
954.652.2020  
jthiel@bergercommercial.com

Daniel Forman  
Sales Associate  
954.652.2004  
dforman@bergercommercial.com

Keith R. Graves, CCIM  
Senior Vice President  
954.652.2031  
kgraves@bergercommercial.com

