

PARKHILL MEDICAL

31700 W. 12 MILE ROAD | FARMINGTON HILLS, MI 48334

Office Building For Lease



PROPERTY HIGHLIGHTS

- Complete remodel coming soon, including all new common areas and updates to all suites
- 500 - 3,750 RSF medical/general office spaces
- Prior dental suite available
- Monument signage offered
- Ample parking
- Well situated at 12 Mile & Orchard Lake Roads (near I-696)
- Numerous restaurants in the immediate area



KEVIN JAPPAYA, CCIM

248.851.8900

kjappaya@kjcre.com

PRESTON RABBAN

248.851.8900

prabban@kjcre.com

30201 Orchard Lake Road, Suite 100 | Farmington Hills, MI 48334 | 248.851.8900 | kjcre.com

Disclosure: The information provided herein has been given to us by the owner of the property or other sources we deem reliable. We make no representations or warranties, expressed or implied, as to the accuracy of the information. All information should be verified prior to purchase or lease.



PARKHILL MEDICAL

31700 W. 12 MILE ROAD | FARMINGTON HILLS, MI 48334

Office Building For Lease

OFFERING SUMMARY

Zoning:	OS-1, Office Service District
Building Size:	10,496 SF
Parking:	+/- 50

AVAILABLE SPACES SIZE (RSF) LEASE RATE:

Suite 100:	1,450 RSF	\$18.00 RSF, Gross + Electric
*Suite 102:	2,000 RSF	\$18.00 RSF, Gross + Electric
*Suite 103: (former dental)	1,750 RSF	\$18.00 RSF, Gross + Electric
*Can be combined	3,750 RSF	
**Suite 200:	600 RSF	\$800/Month, Gross + Electric
**Suite 210:	500 RSF	\$667/Month, Gross + Electric
**Suite 220:	1,025 RSF	\$16.00 RSF, Gross + Electric
**Can be combined	2,125 RSF	

PROPERTY DESCRIPTION

Medical/general office spaces ranging from 500 to 3,750 RSF are currently available. Complete remodel coming soon, including all new common areas and updates to all suites. A previously utilized dental suite is currently vacant. Monument signage is being offered, and the property features ample parking. The location is strategically positioned on 12 Mile Road just west of Orchard Lake Road, in close proximity to I-696. The area boasts numerous restaurants as well.

LOCATION DESCRIPTION

Located on the north side of 12 Mile Road, just west of Orchard Lake, in close proximity to I-696.

SURROUNDING BUSINESSES

Happy's Pizza, Craft Brew City, Starbucks, Jet's, Scramblers, Wendy's, Subway, Arby's, Jax Kar Wash, Verizon, Comfort Inn, Fairfield Inn & Suites, and many more.

TRAFFIC (VEHICLES PER DAY)

W. 12 Mile Road	28,986
(2WAY/ADT/CoStar 2022)	



30201 Orchard Lake Road, Suite 100 | Farmington Hills, MI 48334 | 248.851.8900 | kjcre.com

Disclosure: The information provided herein has been given to us by the owner of the property or other sources we deem reliable. We make no representations or warranties, expressed or implied, as to the accuracy of the information. All information should be verified prior to purchase or lease.

KEVIN JAPPAYA, CCIM

248.851.8900

kjappaya@kjcre.com

PRESTON RABBAN

248.851.8900

prabban@kjcre.com



PARKHILL MEDICAL

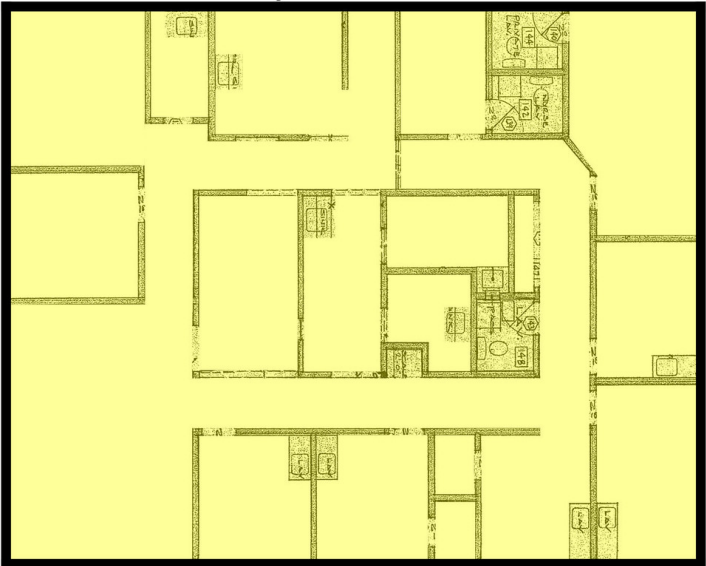
31700 W. 12 MILE ROAD | FARMINGTON HILLS, MI 48334

Office Building For Lease

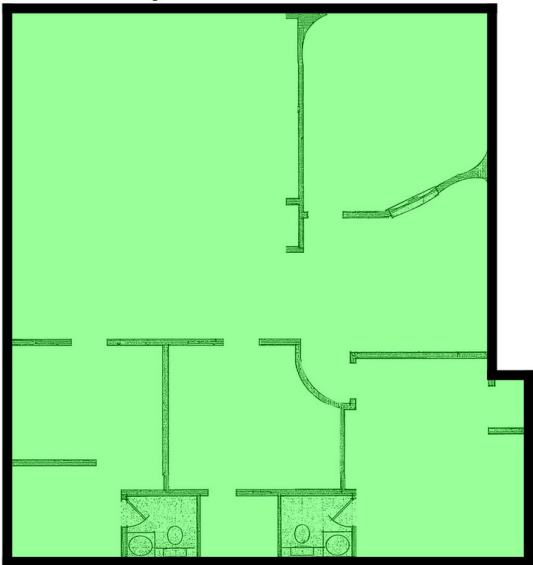
First Floor

Suite 102:
2,000 RSF

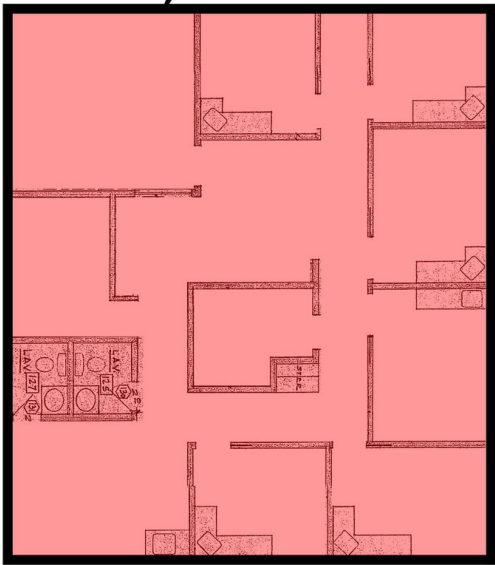
Suites 102 & 103
can be combined to
3,750 RSF



Suite 100:
1,450 RSF



Suite 103:
1,750 RSF



12 MILE ROAD



KEVIN JAPPAYA, CCIM
248.851.8900
kjappaya@kjcre.com

PRESTON RABBAN
248.851.8900
prabban@kjcre.com

30201 Orchard Lake Road, Suite 100 | Farmington Hills, MI 48334 | 248.851.8900 | kjcre.com

Disclosure: The information provided herein has been given to us by the owner of the property or other sources we deem reliable. We make no representations or warranties, expressed or implied, as to the accuracy of the information. All information should be verified prior to purchase or lease.



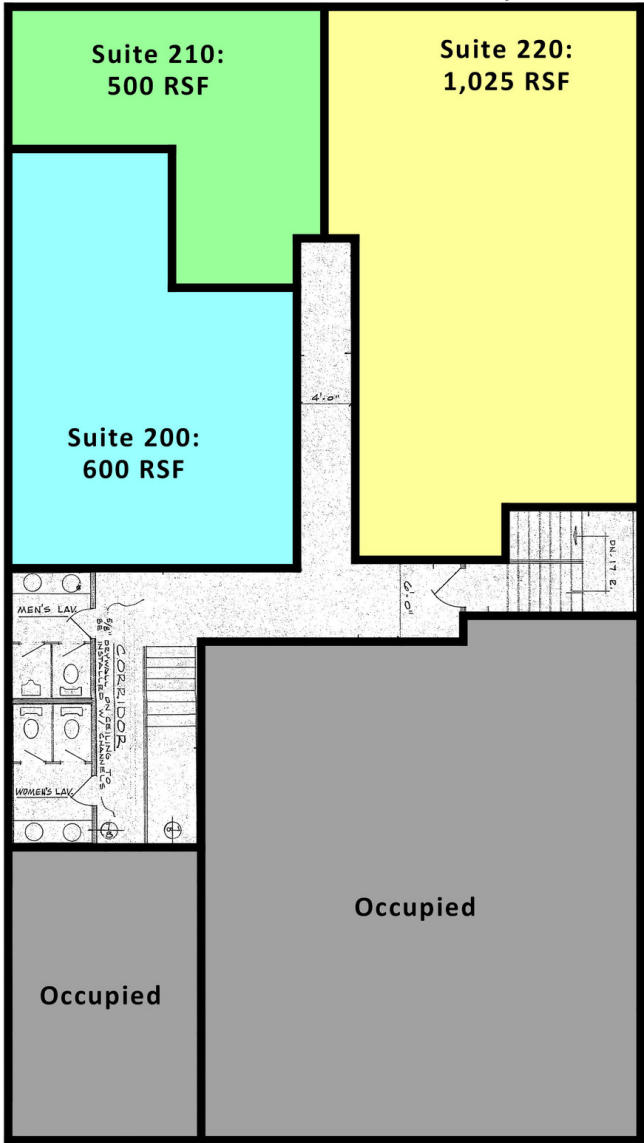
PARKHILL MEDICAL

31700 W. 12 MILE ROAD | FARMINGTON HILLS, MI 48334

Office Building For Lease

Second Floor

Suite can be combined
to 2,125 RSF



KEVIN JAPPAYA, CCIM 248.851.8900 kjappaya@kjcre.com
PRESTON RABBAN 248.851.8900 prabban@kjcre.com

30201 Orchard Lake Road, Suite 100 | Farmington Hills, MI 48334 | 248.851.8900 | kjcre.com

Disclosure: The information provided herein has been given to us by the owner of the property or other sources we deem reliable. We make no representations or warranties, expressed or implied, as to the accuracy of the information. All information should be verified prior to purchase or lease.



PARKHILL MEDICAL

31700 W. 12 MILE ROAD | FARMINGTON HILLS, MI 48334

Office Building For Lease



KEVIN JAPPAYA, CCIM
248.851.8900
kjappaya@kjcre.com

PRESTON RABBAN
248.851.8900
prabban@kjcre.com

30201 Orchard Lake Road, Suite 100 | Farmington Hills, MI 48334 | 248.851.8900 | kjcre.com

Disclosure: The information provided herein has been given to us by the owner of the property or other sources we deem reliable. We make no representations or warranties, expressed or implied, as to the accuracy of the information. All information should be verified prior to purchase or lease.



PARKHILL MEDICAL

31700 W. 12 MILE ROAD | FARMINGTON HILLS, MI 48334

Office Building For Lease



KEVIN JAPPAYA, CCIM
248.851.8900
kjappaya@kjcre.com

PRESTON RABBAN
248.851.8900
prabban@kjcre.com

30201 Orchard Lake Road, Suite 100 | Farmington Hills, MI 48334 | 248.851.8900 | kjcre.com

Disclosure: The information provided herein has been given to us by the owner of the property or other sources we deem reliable. We make no representations or warranties, expressed or implied, as to the accuracy of the information. All information should be verified prior to purchase or lease.



PARKHILL MEDICAL

31700 W. 12 MILE ROAD | FARMINGTON HILLS, MI 48334

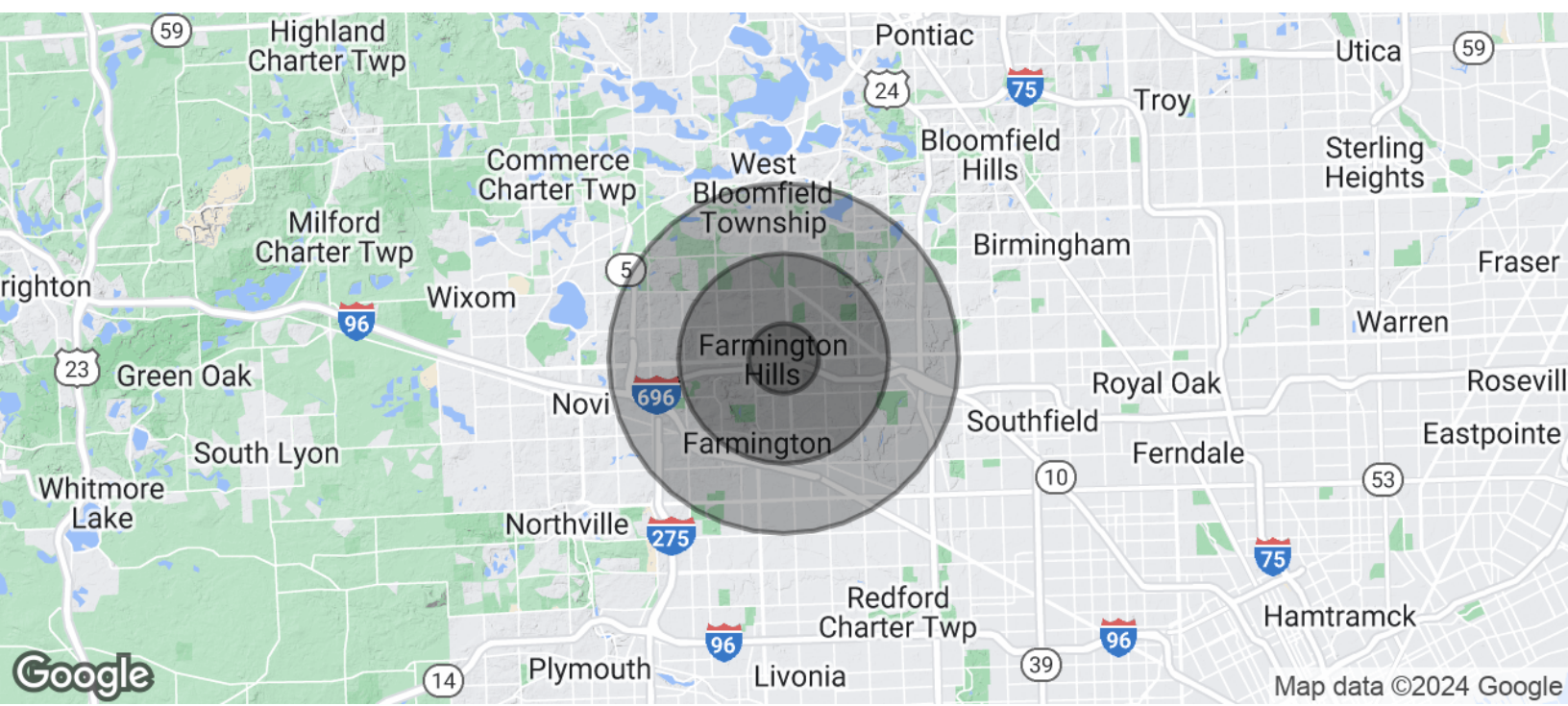
Office Building For Lease



PARKHILL MEDICAL

31700 W. 12 MILE ROAD | FARMINGTON HILLS, MI 48334

Office Building For Lease



POPULATION	1 MILE	3 MILES	5 MILES
Total Population	6,816	63,033	191,161
Average age	42.2	44.1	42.0
Average age (Male)	43.1	43.7	40.9
Average age (Female)	40.6	44.5	43.0

HOUSEHOLDS & INCOME	1 MILE	3 MILES	5 MILES
Total households	2,975	25,369	79,195
# of persons per HH	2.3	2.5	2.4
Average HH income	\$79,675	\$99,311	\$96,374
Average house value	\$245,818	\$278,630	\$287,445

* Demographic data derived from 2020 ACS - US Census



KEVIN JAPPAYA, CCIM
248.851.8900
kjappaya@kjcre.com

PRESTON RABBAN
248.851.8900
prabban@kjcre.com



30201 Orchard Lake Road, Suite 100 | Farmington Hills, MI 48334 | 248.851.8900 | kjcre.com

Disclosure: The information provided herein has been given to us by the owner of the property or other sources we deem reliable. We make no representations or warranties, expressed or implied, as to the accuracy of the information. All information should be verified prior to purchase or lease.