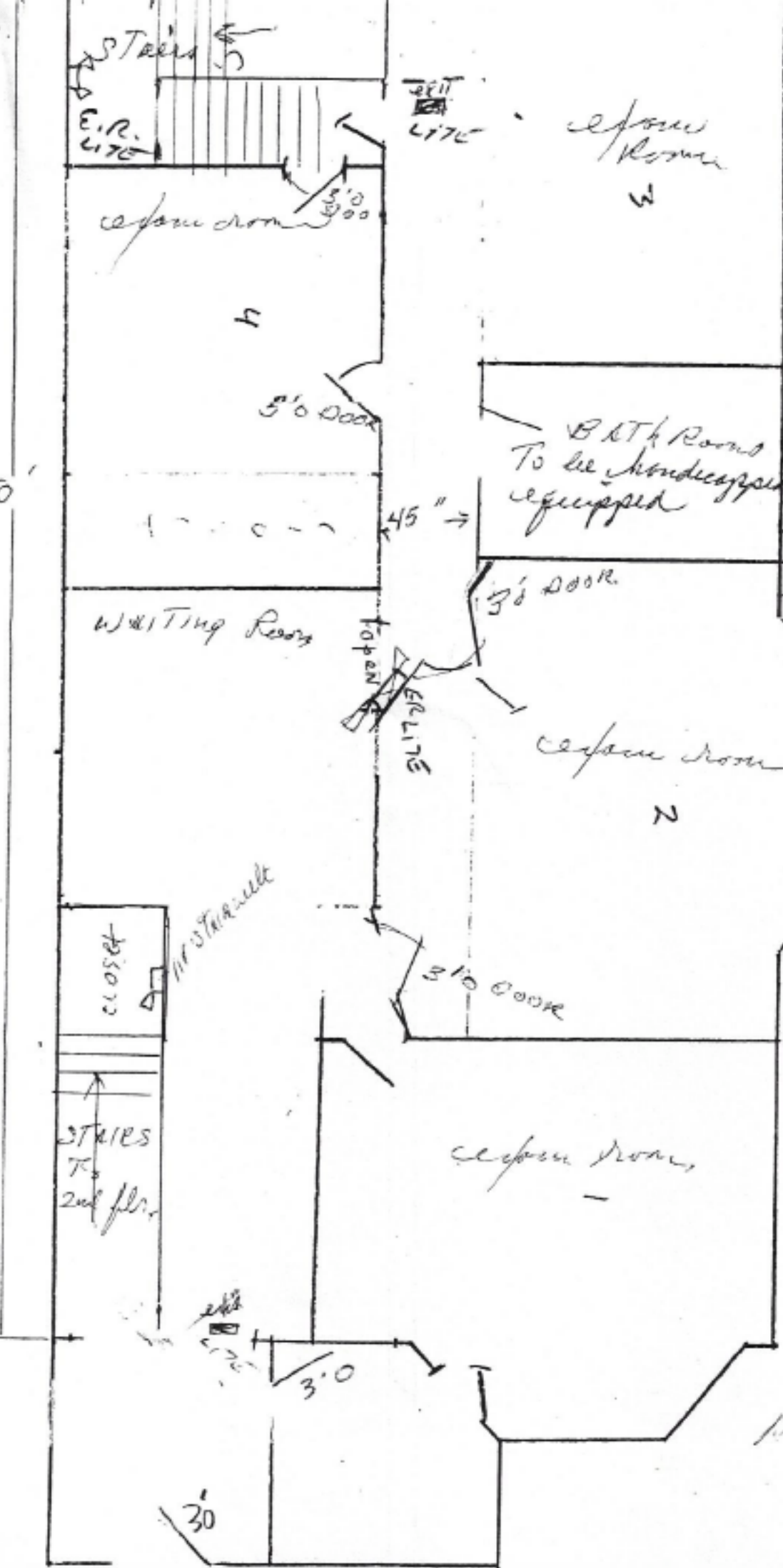


1300 sq ft
1250 actual

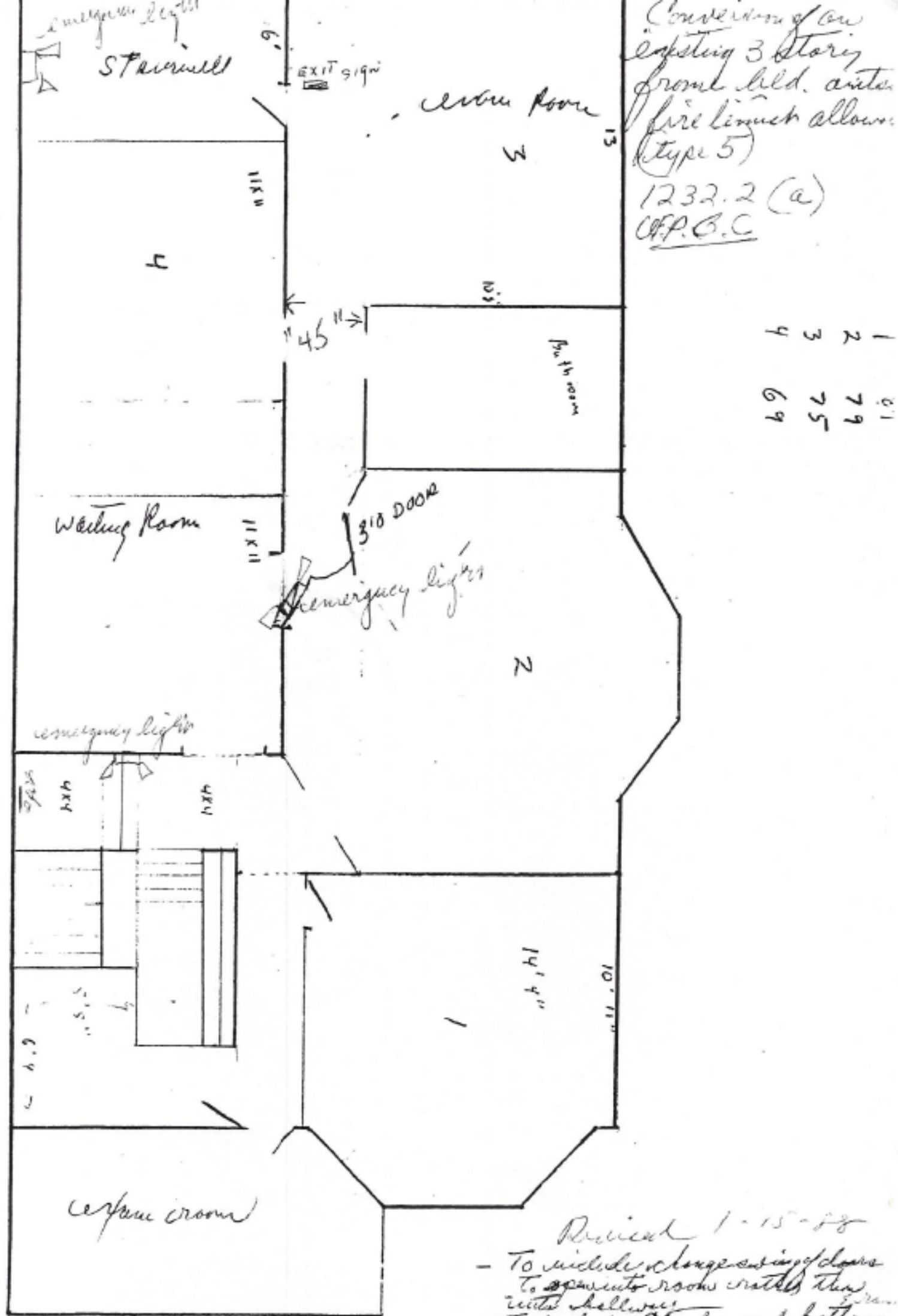
To add porch and
deduct closets and
storage space
Requires handicapped
space as per Code
1102.3 (2)
Lease agreement and
survivor clause
will be included
in all tenants
leases and
agreements for
handicapped facilities
on 1st floor to be
utilized by all tenants
letter attached



Revised 1-15-88

15
100

2nd Floor



- Revised 1-15-88
- To include change siding of doors to ~~open into~~ rooms rather than into hallway
 - To include ^{3rd floor} double cupped bathroom
 - To include 2nd floor emergency signaling

5th Floor
24 DMS Alameda

