

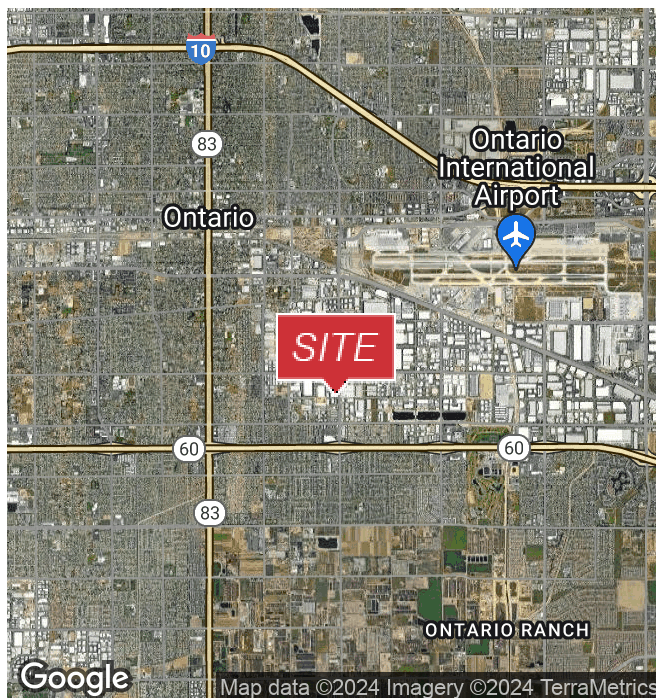


## 1950A - 2000A S Grove Ave

Ontario, California 91761

### Property Highlights

- High Image Medical Office/ Flex Commercial Suite (Divisible)
- Special Water & Power Improvements/ Upgrades for a Dialysis Center
- High Speed FiOS Internet
- Grade Level Roll up Doors Possible
- Street Frontage along South Grove Avenue
- Immediate Access to 60, 15 & 10 Freeways
- Professionally Managed and Maintained Business Park
- Available July 1, 2024



#### Justin Kuehn

Senior Vice President | 909.243.7627  
jkuehn@naicapital.com | CalDRE #01966182

#### Ben Chau

Associate | 909.243.7621  
bchau@naicapital.com | CalDRE #02119013

#### Richard Lee, SIOR

Executive Vice President | 909.243.7601  
rlee@naicapital.com | CalDRE #01757870

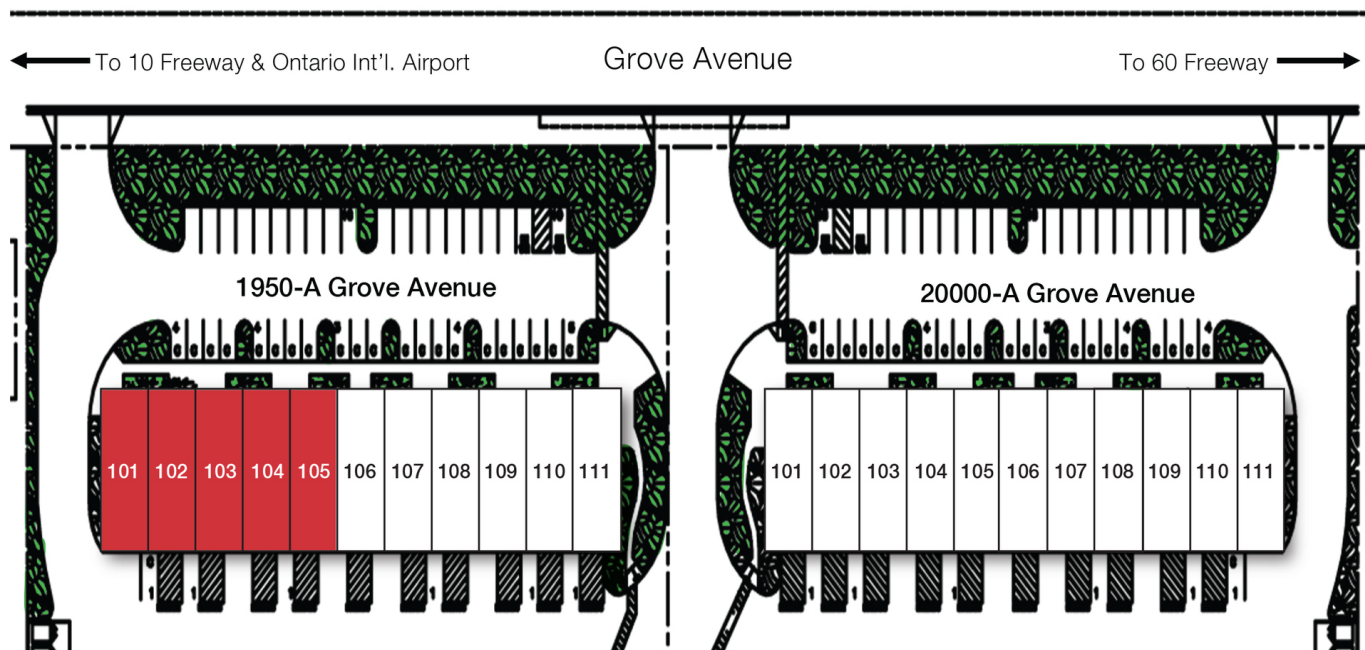






## Grove Ontario Business Center

1950-A & 2000-A Grove Avenue  
Ontario, California



### 1950-A S Grove Avenue

Unit	Tenant	Unit SF
101	AVAILABLE 7/1/24	7,250
102	AVAILABLE	0
103	AVAILABLE 7/1/24	0
104	AVAILABLE	0
105	AVAILABLE	0
106	Maria & Sam Augustine	1,450
107	Hilti Inc.	2,900
108	Hilti Inc.	0
109	Turning Point Solutions	2,900
110	Turning Point Solutions	0
111	Top Staffing Solutions	1,450

### 2000-A S Grove Avenue

Unit	Tenant	Unit SF
101	Ontario Blueprint	1,450
102	Sonia Beri/ Perfume Million Inc	1,450
103	Calstar Insurance Agency	2,900
104	Nijikawa USA, Inc.	0
105	Bearings & Drives Inc.	1,450
106	Prospects Employment Services, LLC.	1,450
107	A&L Rehab Specialist, Inc.	1,450
108	Heights Insurance Group, Inc.	1,450
109	Mketech Inc.	1,450
110	Priority Business Services, INC	2,900
111	Priority Business Services, INC	0

#### Justin Kuehn

Senior Vice President | 909.243.7627  
jkuehn@naicapital.com | CalDRE #01966182

#### Ben Chau

Associate | 909.243.7621  
bchau@naicapital.com | CalDRE #02119013

#### Richard Lee, SIOR

Executive Vice President | 909.243.7601  
rlee@naicapital.com | CalDRE #01757870





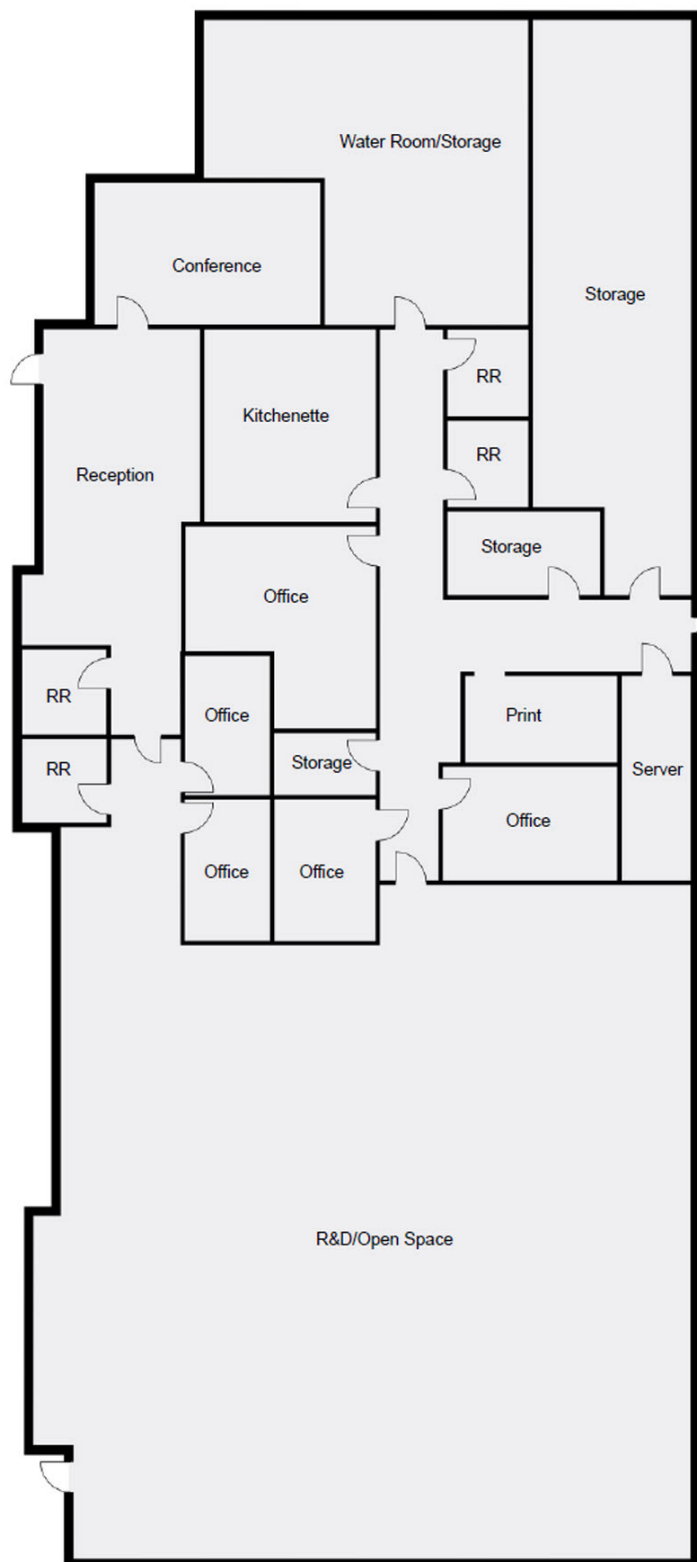
**FOR LEASE**



**OFFICE/FLEX**



**1,450 - 7,250 SF**



**Justin Kuehn**

Senior Vice President | 909.243.7627  
jkuehn@naicapital.com | CalDRE #01966182

**Ben Chau**

Associate | 909.243.7621  
bchau@naicapital.com | CalDRE #02119013

**Richard Lee, SIOR**

Executive Vice President | 909.243.7601  
rlee@naicapital.com | CalDRE #01757870



www.naicapital.com

NO WARRANTY, EXPRESS OR IMPLIED, IS MADE AS TO THE ACCURACY OF THE INFORMATION CONTAINED HEREIN. THIS INFORMATION IS SUBMITTED SUBJECT TO ERRORS, OMISSIONS, CHANGE OF PRICE, RENTAL OR OTHER CONDITIONS, WITHDRAWAL WITHOUT NOTICE, AND IS SUBJECT TO ANY SPECIAL LISTING CONDITIONS IMPOSED BY OUR PRINCIPALS. COOPERATING BROKERS, BUYERS, TENANTS AND OTHER PARTIES WHO RECEIVE THIS DOCUMENT SHOULD NOT RELY ON IT, BUT SHOULD USE IT AS A STARTING POINT OF ANALYSIS, AND SHOULD INDEPENDENTLY CONFIRM THE ACCURACY OF THE INFORMATION CONTAINED HEREIN THROUGH A DUE DILIGENCE REVIEW OF THE BOOKS, RECORDS, FILES AND DOCUMENTS THAT CONSTITUTE RELIABLE SOURCES OF THE INFORMATION DESCRIBED HEREIN. LOGOS ARE FOR IDENTIFICATION PURPOSES ONLY AND MAY BE TRADEMARKS OF THEIR RESPECTIVE COMPANIES. NAI CAPITAL COMMERCIAL, INC. CAL DRE LIC. #02130474





**FOR LEASE**



**OFFICE/FLEX**



**1,450 - 7,250 SF**



**Justin Kuehn**

Senior Vice President | 909.243.7627  
jkuehn@naicapital.com | CalDRE #01966182

**Ben Chau**

Associate | 909.243.7621  
bchau@naicapital.com | CalDRE #02119013

**Richard Lee, SIOR**

Executive Vice President | 909.243.7601  
rlee@naicapital.com | CalDRE #01757870



[www.naicapital.com](http://www.naicapital.com)

NO WARRANTY, EXPRESS OR IMPLIED, IS MADE AS TO THE ACCURACY OF THE INFORMATION CONTAINED HEREIN. THIS INFORMATION IS SUBMITTED SUBJECT TO ERRORS, OMISSIONS, CHANGE OF PRICE, RENTAL OR OTHER CONDITIONS, WITHDRAWAL WITHOUT NOTICE, AND IS SUBJECT TO ANY SPECIAL LISTING CONDITIONS IMPOSED BY OUR PRINCIPALS. COOPERATING BROKERS, BUYERS, TENANTS AND OTHER PARTIES WHO RECEIVE THIS DOCUMENT SHOULD NOT RELY ON IT, BUT SHOULD USE IT AS A STARTING POINT OF ANALYSIS, AND SHOULD INDEPENDENTLY CONFIRM THE ACCURACY OF THE INFORMATION CONTAINED HEREIN THROUGH A DUE DILIGENCE REVIEW OF THE BOOKS, RECORDS, FILES AND DOCUMENTS THAT CONSTITUTE RELIABLE SOURCES OF THE INFORMATION DESCRIBED HEREIN. LOGOS ARE FOR IDENTIFICATION PURPOSES ONLY AND MAY BE TRADEMARKS OF THEIR RESPECTIVE COMPANIES. NAI CAPITAL COMMERCIAL, INC. CAL DRE LIC. #02130474