



Pasadena Green Plaza South Building 1030 East Green Street

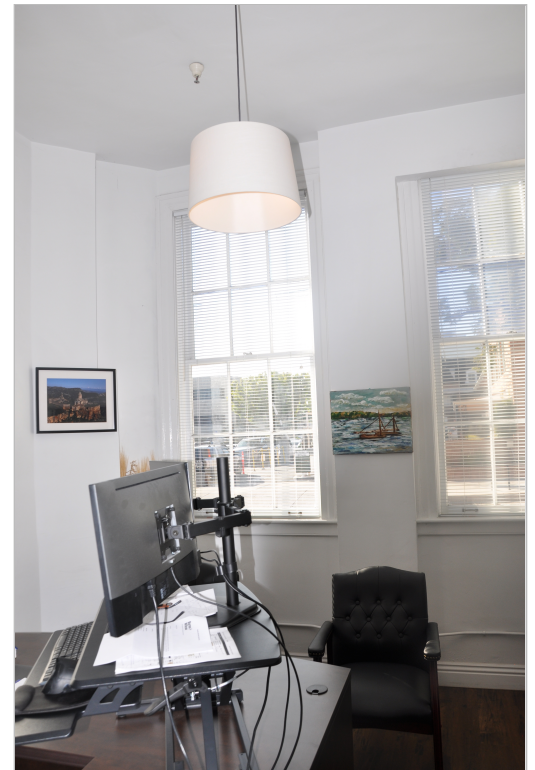
Pasadena, California 91106
SEC Green Street & S. Catalina Ave.

Lease Highlights

- 3 offices & reception area. Entry on S. Catalina Ave.
- High 12' ceilings in 2 offices and reception area
- Space is sprinklered
- Tenant controlled HVAC. Tenant pays submetered electric
- Available March 1, 2024
- Adjacent to multiple restaurants and cafes
- Convenient access to 210 & 134 Freeways
- 2 reserved parking spaces available @ \$100/space/mo.
- 2 blocks East of Lake Avenue.

Available Space

Space	Lease Rate	Size (SF)
Suite 110	\$2.75 SF / NNN (\$0.55)	600 Useable SF



For Leasing information, Contact:

Cheryl Pector

O: 626.204.1529

cpektor@naicapital.com | CalDRE #00810674

No warranty, express or implied, is made as to the accuracy of the information contained herein. This information is submitted subject to errors, omissions, change of price, rental or other conditions, withdrawal without notice, and is subject to any special listing conditions imposed by our principals. Cooperating brokers, buyers, tenants and other parties who receive this document should not rely on it, but should use it as a starting point of analysis, and should independently confirm the accuracy of the information contained herein through a due diligence review of the books, records, files and documents that constitute reliable sources of the information described herein. Logos are for identification purposes only and may be trademarks of their respective companies. NAI Capital Commercial, Inc. CalDRE #00100174

NAI Capital

225 S. Lake Avenue, Suite M270

Pasadena, CA 91101

626.564.4800

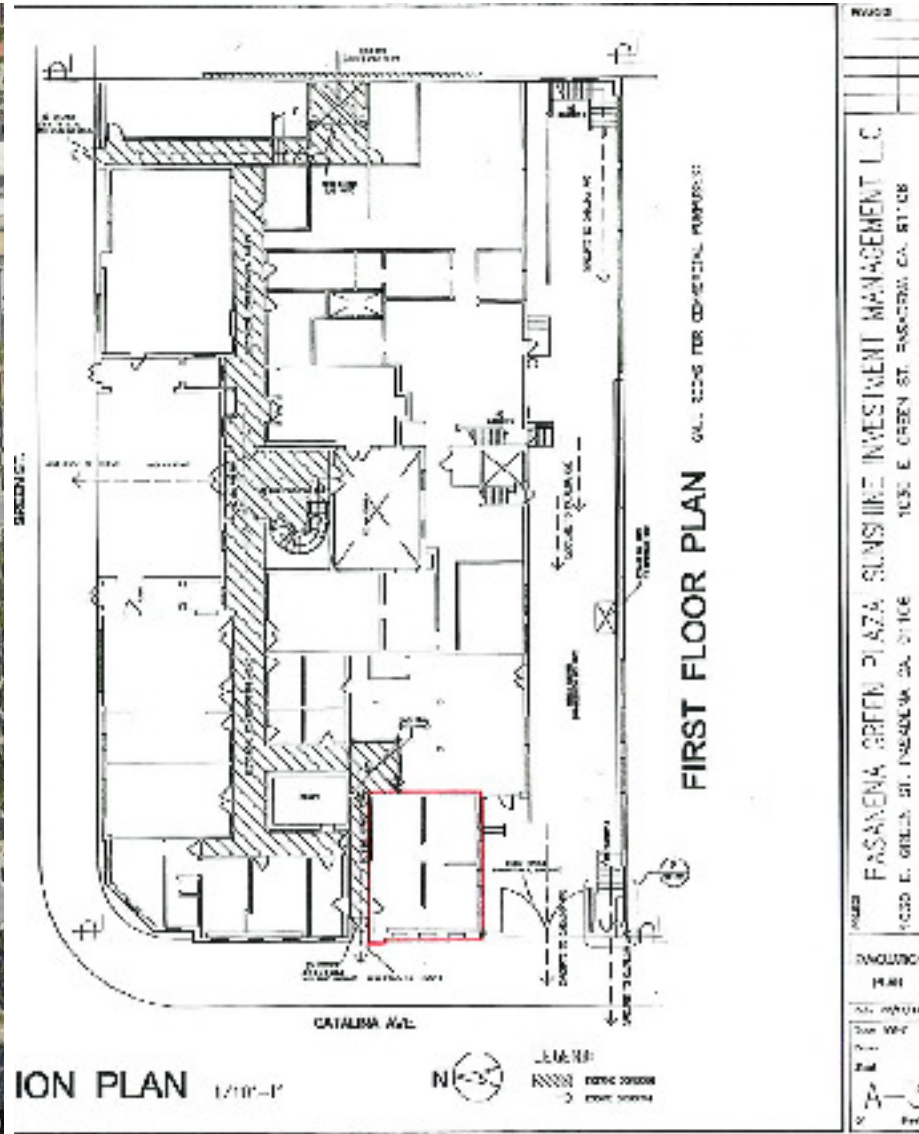
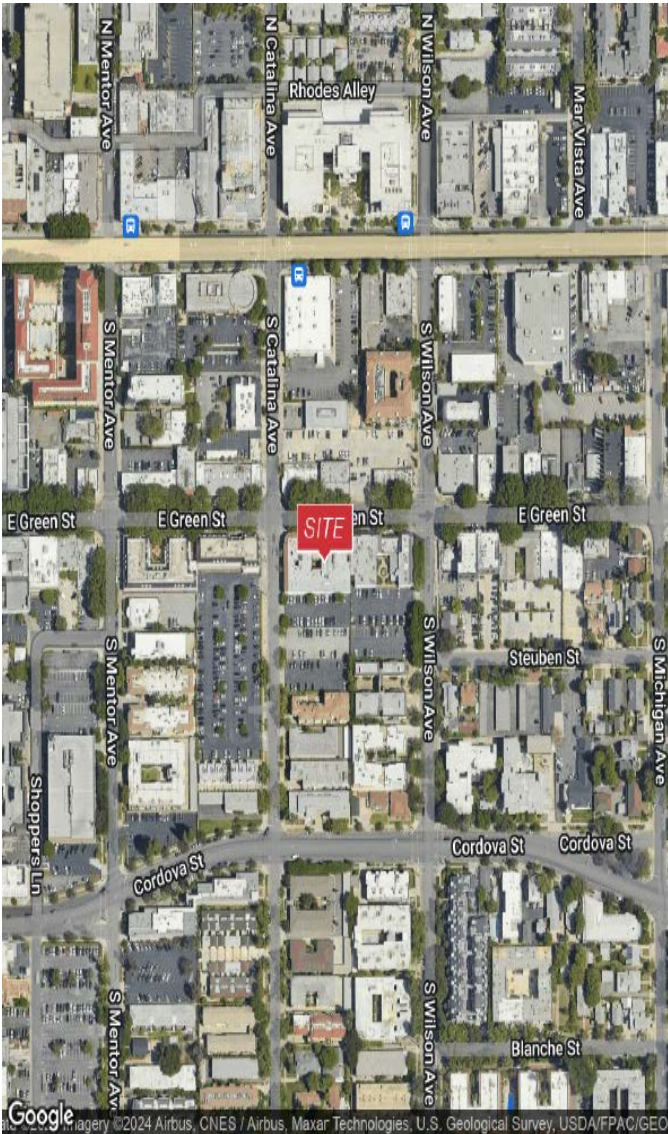
naicapital.com



For Lease

Ground Floor Office

600 Useable SF



Cheryl Pector

626.204.1529

cpestor@naicapital.com

CalDRE #00810674