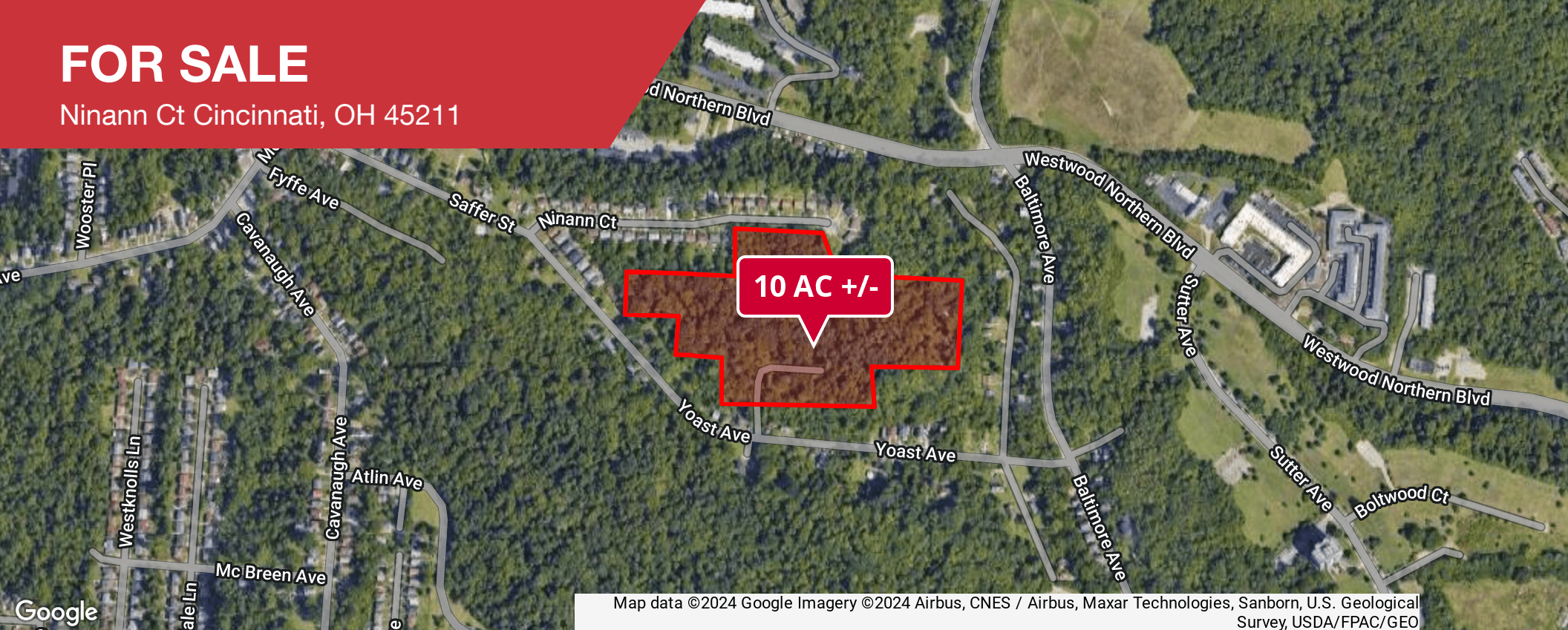


# FOR SALE

Ninann Ct Cincinnati, OH 45211



Map data ©2024 Google Imagery ©2024 Airbus, CNES / Airbus, Maxar Technologies, Sanborn, U.S. Geological Survey, USDA/FPAC/GEO

**NAI**Bergman

Land | 10 Acres

- 10 AC +/-
- Zoned SF-2 (City of Cincinnati)
- Land has access from Ninann Ct. and Randall Ave.
- Sale price: \$997,500



✉ **Laurence Bergman**  
+1 513 322 6307  
larry@bergman-group.com



# FOR SALE

Ninann Ct Cincinnati, OH 45211

The Christ Hospital Outpatient Center - Green Township



Westwood Elementary School

Roll Hill School

Western Hills Plaza

Ethel M. Taylor Academy

10 AC +/-  
FOR SALE



Roberts Academy

Map data ©2024 Imagery ©2024 Airbus, CNES / Airbus, IndianaMap Framework Data, Landsat / Copernicus, Maxar Technologies, Sanborn, U.S. Geological Survey, USDA/FPAC/GEBCO

No Warranty Or Representation, Express Or Implied, Is Made As To The Accuracy Of The Information Contained Herein, And The Same Is Submitted Subject To Errors, Omissions, Change Of Price, Rental Or Other Conditions, Prior Sale, Lease Or Financing, Or Withdrawal Without Notice, And Of Any Special Listing Conditions Imposed By Our Principals No Warranties Or Representations Are Made As To The Condition Of The Property Or Any Hazards Contained Therein Are Any To Be Implied.

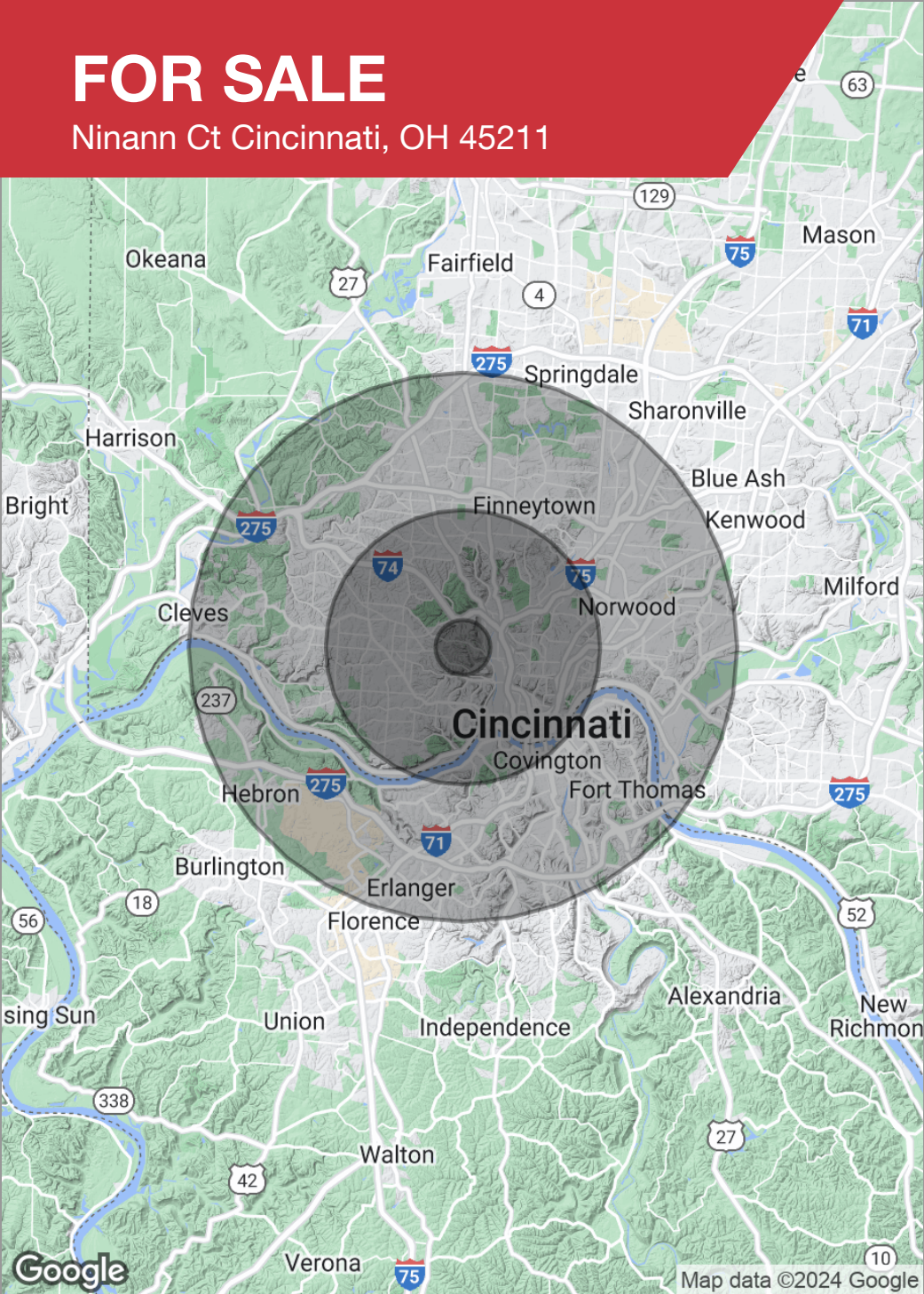
✉ Laurence Bergman  
+1 513 322 6307  
larry@bergman-group.com

**NABergman**



# FOR SALE

Ninann Ct Cincinnati, OH 45211



POPULATION	1 MILE	5 MILES	10 MILES
Total population	13,313	298,704	769,981
Median age	29.3	35.3	37.7
Median age (male)	27.6	34.3	36.2
Median age (Female)	29.7	36.7	39.3
HOUSEHOLDS & INCOME	1 MILE	5 MILES	10 MILES
Total households	6,578	150,143	365,575
# of persons per HH	2.0	2.0	2.1
Average HH income	\$27,845	\$55,626	\$69,547
Average house value	\$68,787	\$141,972	\$165,228

\* Demographic data derived from 2020 ACS - US Census