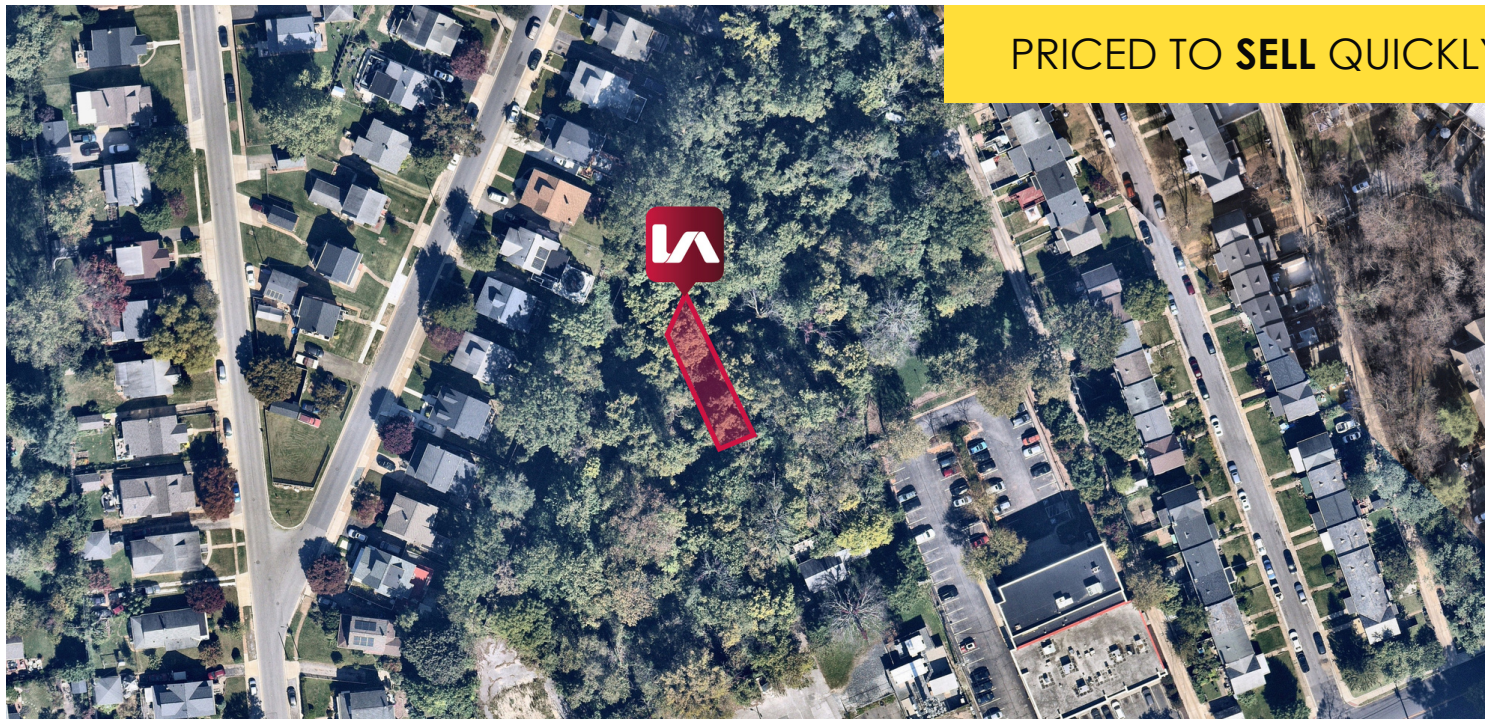


LAND FOR SALE FREDERICK ROAD

Catonsville, MD 21228

Available: .70 Acres



PRICED TO **SELL QUICKLY**

LISTING DATA

AVAILABLE ACRES: .70 Acres

ECONOMIC DATA

SALE PRICE: \$149,000

PROPERTY INFORMATION

COUNTY: Baltimore

SUBMARKET: Catonsville

PROPERTY HIGHLIGHTS

- Private wooded lot suitable for a house
- Dense area of Catonsville with surrounding amenities
- Priced for quick sale



PROPERTY OVERVIEW

Large, beautiful wooded lot ready for someone's dream home or rental property

LOCATION OVERVIEW

Located in a secluded, wooded area, nestled between surrounding residential and commercial properties.

Coordinates: 39.276778 -76.718412

Steve Weiss
Senior Vice President
443.741.4051
sweiss@lee-associates.com

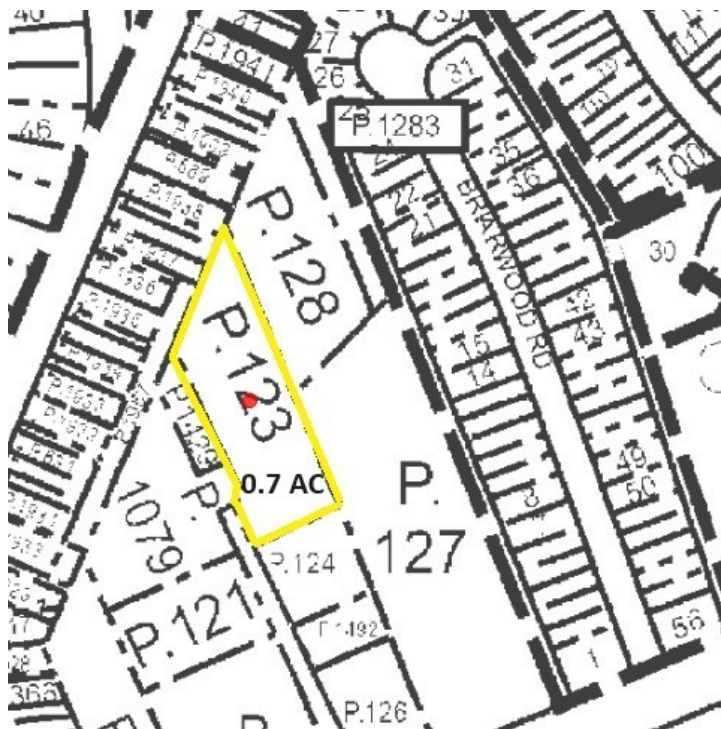
All information furnished regarding property for sale, rental or financing is from sources deemed reliable, but no warranty or representation is made to the accuracy thereof and same is submitted to errors, omissions, change of price, rental or other conditions prior to sale, lease or financing or withdrawal without notice. No liability of any kind is to be imposed on the broker herein.

LAND FOR SALE FREDERICK ROAD

Catonsville, MD 21228

Available:

LEE & ASSOCIATES
COMMERCIAL REAL ESTATE SERVICES



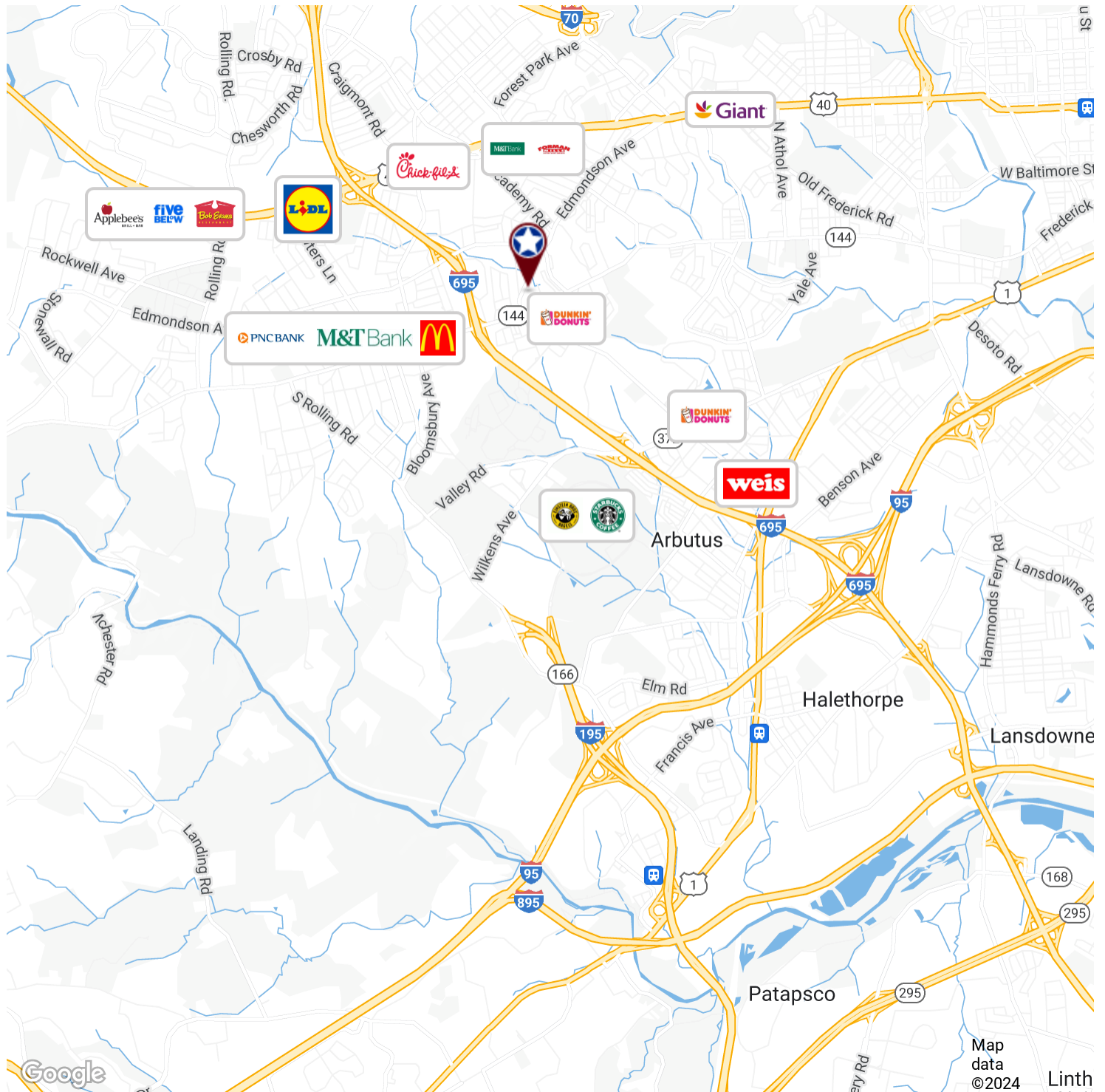
Steve Weiss
Senior Vice President
443.741.4051
sweiss@lee-associates.com

All information furnished regarding property for sale, rental or financing is from sources deemed reliable, but no warranty or representation is made to the accuracy thereof and same is submitted to errors, omissions, change of price, rental or other conditions prior to sale, lease or financing or withdrawal without notice. No liability of any kind is to be imposed on the broker herein.

LAND FOR SALE FREDERICK ROAD

Catonsville, MD 21228

Available:



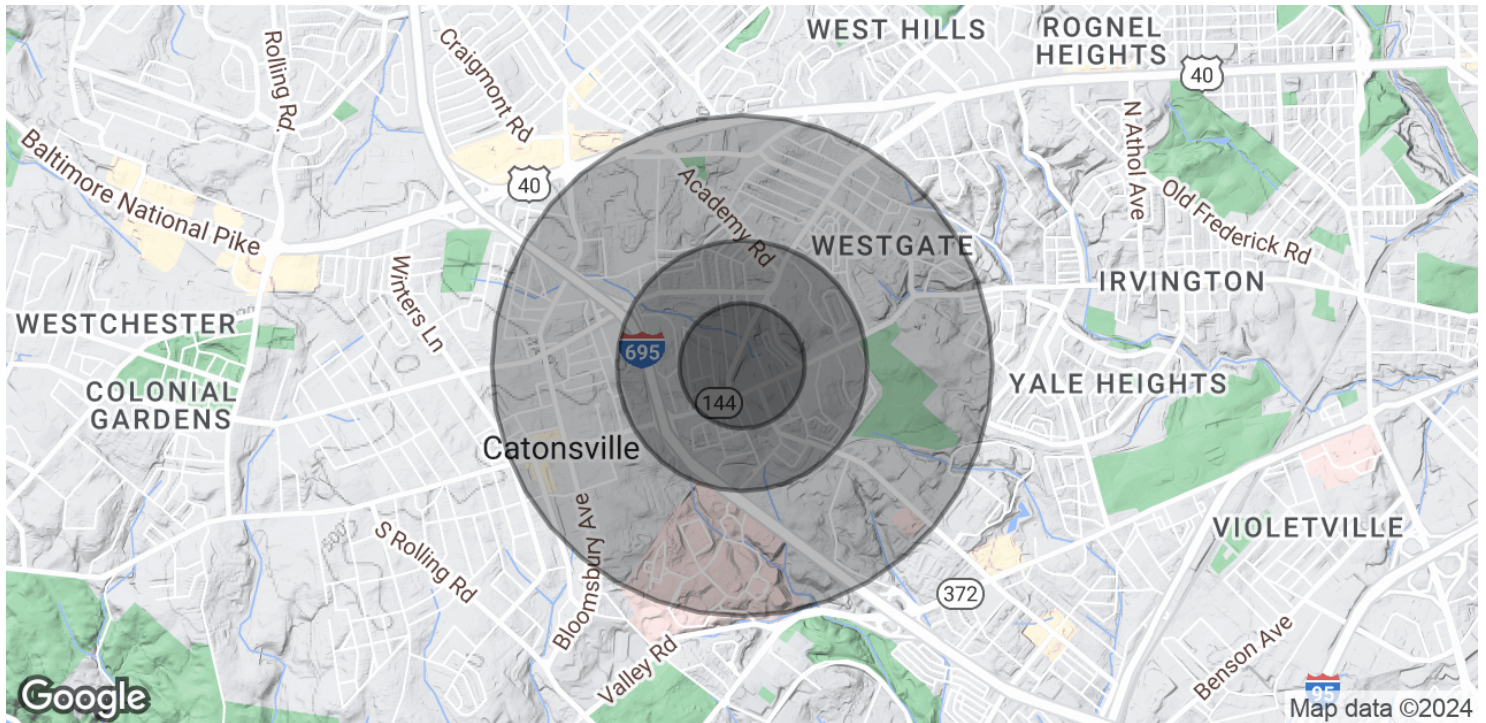
Steve Weiss
Senior Vice President
443.741.4051
sweiss@lee-associates.com

All information furnished regarding property for sale, rental or financing is from sources deemed reliable, but no warranty or representation is made to the accuracy thereof and same is submitted to errors, omissions, change of price, rental or other conditions prior to sale, lease or financing or withdrawal without notice. No liability of any kind is to be imposed on the broker herein.

LAND FOR SALE FREDERICK ROAD

Catonsville, MD 21228

Available:



POPULATION

	0.25 MILES	0.5 MILES	1 MILE
Total Population	601	2,738	10,425
Average Age	44.8	45.3	43.3
Average Age (Male)	40.5	40.8	38.7
Average Age (Female)	48.8	48.7	45.4

HOUSEHOLDS & INCOME

	0.25 MILES	0.5 MILES	1 MILE
Total Households	222	1,023	3,927
# of Persons per HH	2.7	2.7	2.7
Average HH Income	\$143,286	\$131,592	\$117,363
Average House Value	\$447,057	\$421,096	\$385,065

* Demographic data derived from 2020 ACS - US Census

Steve Weiss
Senior Vice President
443.741.4051
sweiss@lee-associates.com

All information furnished regarding property for sale, rental or financing is from sources deemed reliable, but no warranty or representation is made to the accuracy thereof and same is submitted to errors, omissions, change of price, rental or other conditions prior to sale, lease or financing or withdrawal without notice. No liability of any kind is to be imposed on the broker herein.