



Shops available at Fry's- anchored shopping center



Join Fry's Food Stores, UFC Gym fitness,
and The Melting Pot



Less than 2-miles from I-10 Fwy & Ray Rd
interchange



One of Metro Phoenix's strongest
submarkets



Ideal area demographics and traffic counts

Get more information

Matt Milinovich

D 480 423 7959

C 602 885 9393

matt.milinovich@avisonyoung.com

James DeCremer

D 480 423 7958

C 602 909 0957

james.decremer@avisonyoung.com

Tate Blalock

D 480 423 7925

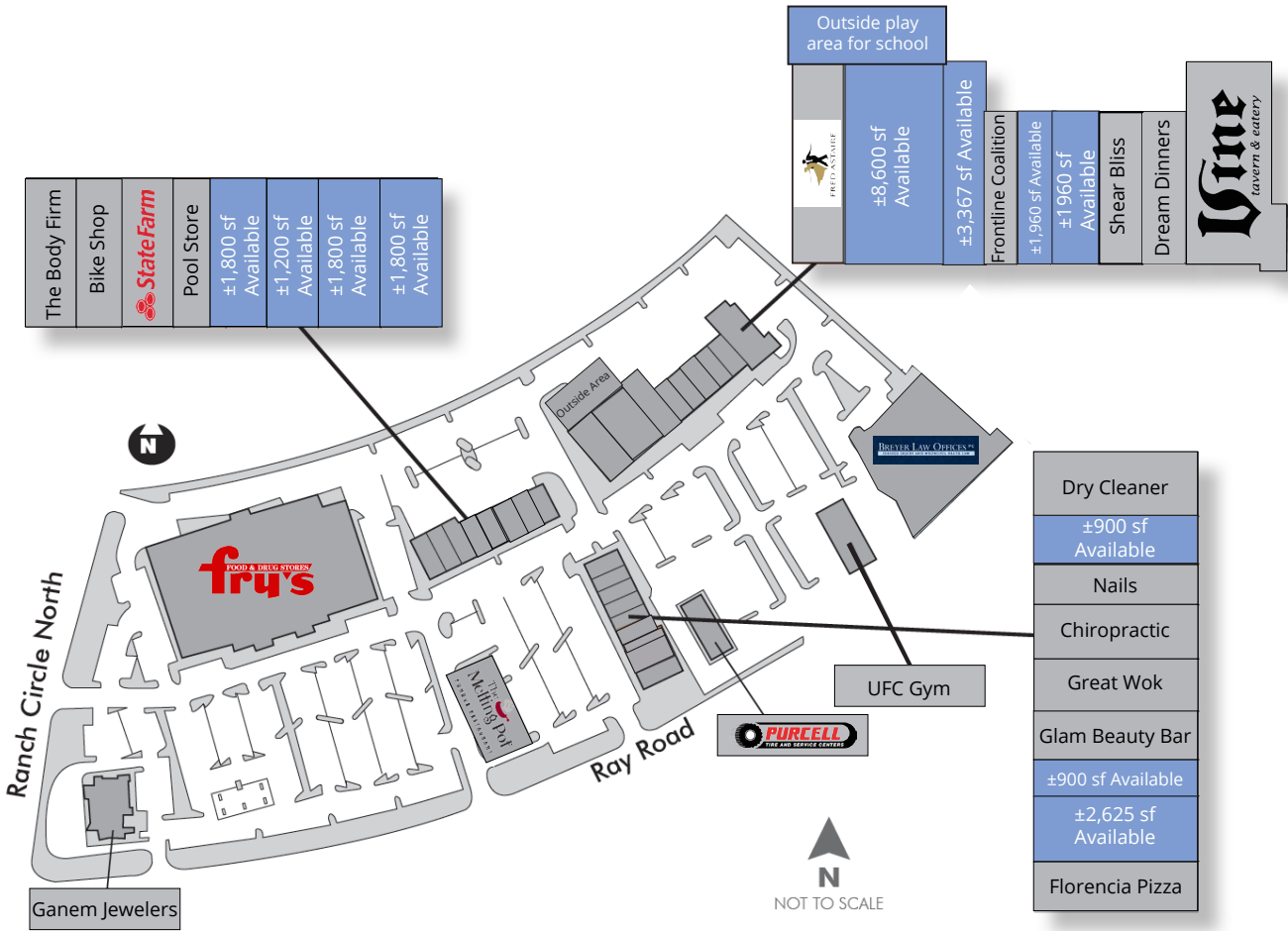
C 602 510 1816

tate.blalock@avisonyoung.com

2720 E Camelback Road | Suite 150 | Phoenix, AZ 85016 | www.avisonyoung.com

Site plan & availability

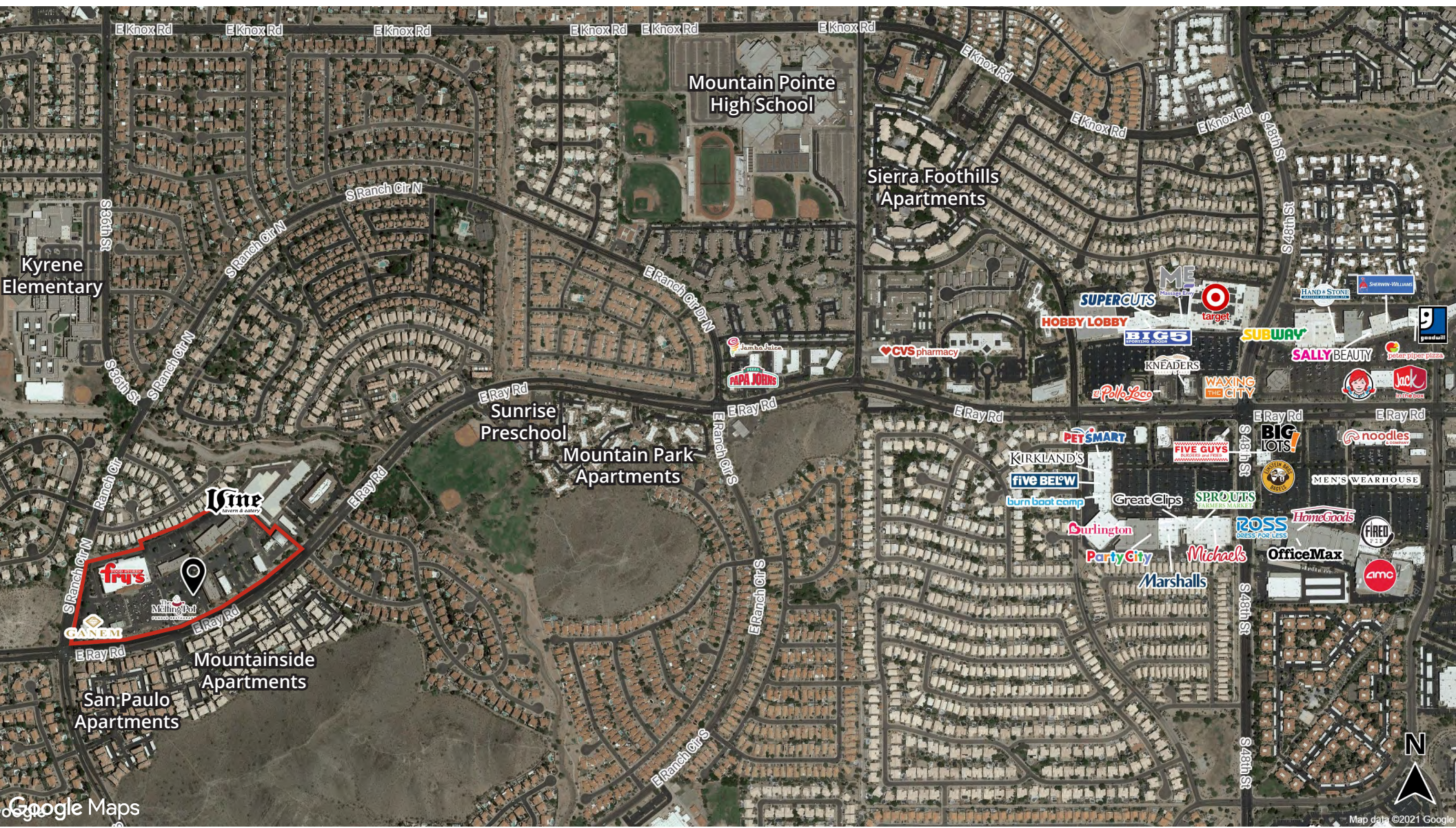
Shop space available
NEC Ray Road & Ranch Circle North




Availability	Size
Available	1,800 sf
Available - former insurance office	1,200 sf
Available - former jewelry store	1,800 sf
Available - former vet	1,800 sf
Available - former school	8,600 sf
Available - former day spa	3,367 sf
Available	1,960 sf
Available - former yoga studio	1,960 sf
Available	900 sf
Available	900 sf
Available - former dance studio	2,625 sf


Trade area


Shop space available
NEC Ray Road & Ranch Circle North




Demographics

	1-mile	3-miles	5-miles
Population	14,816	71,399	157,867


	1-mile	3-miles	5-miles
Median age	38.3	38.9	37.4

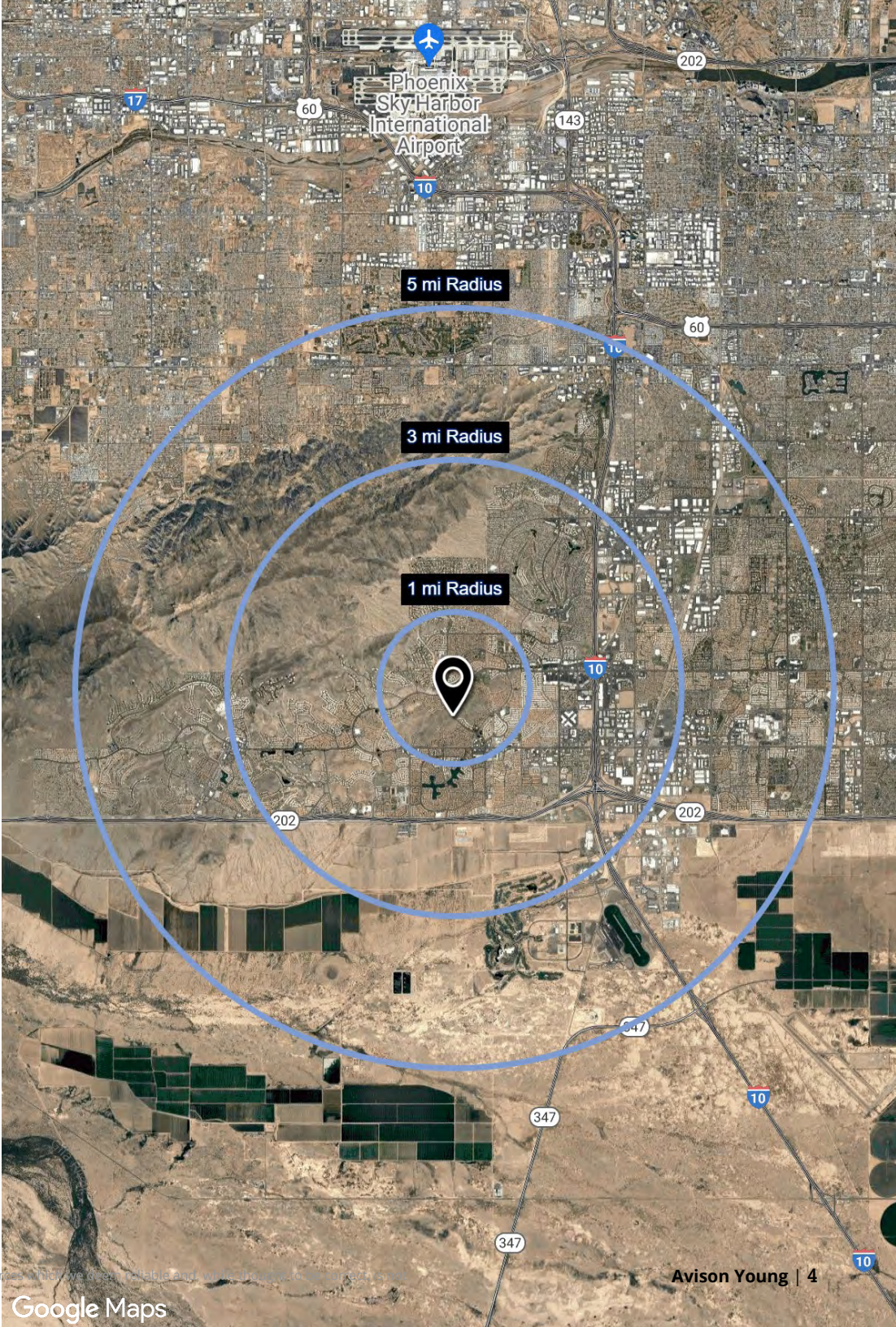
	1-mile	3-miles	5-miles
Daytime employment	2,897	31,529	74,885

	1-mile	3-miles	5-miles
Avg. HH income	\$154,012	\$143,613	\$142,763

	1-mile	3-miles	5-miles
HH units	6,096	30,530	65,680

Traffic counts

	Ranch Circle North	±30,338 cpd
	Ray Road	±59,300 cpd





Visit us online
avisonyoung.com

© 2024 Avison Young - Arizona, Ltd. All rights reserved.

E. & O.E.: The information contained herein was obtained from sources which we deem reliable and, while thought to be correct, is not guaranteed by Avison Young.

2720 E Camelback Road | Suite 150 | Phoenix, AZ 85016 | 480 994 8155

**AVISON
YOUNG**