



Shop space coming available at premium shopping center



Join Fry's, Boston Market & other national
retailers at this busy retail center



Located just 2-miles east of Loop 101/Agua
Fria Freeway



One of Metro Phoenix's strongest
submarkets



Ideal area demographics and traffic counts

Get more information

James DeCremer

D 480 423 7958

C 602 909 0957

james.decremer@avisonyoung.com

Tate Blalock

D 480 423 7925

C 602 510 1816

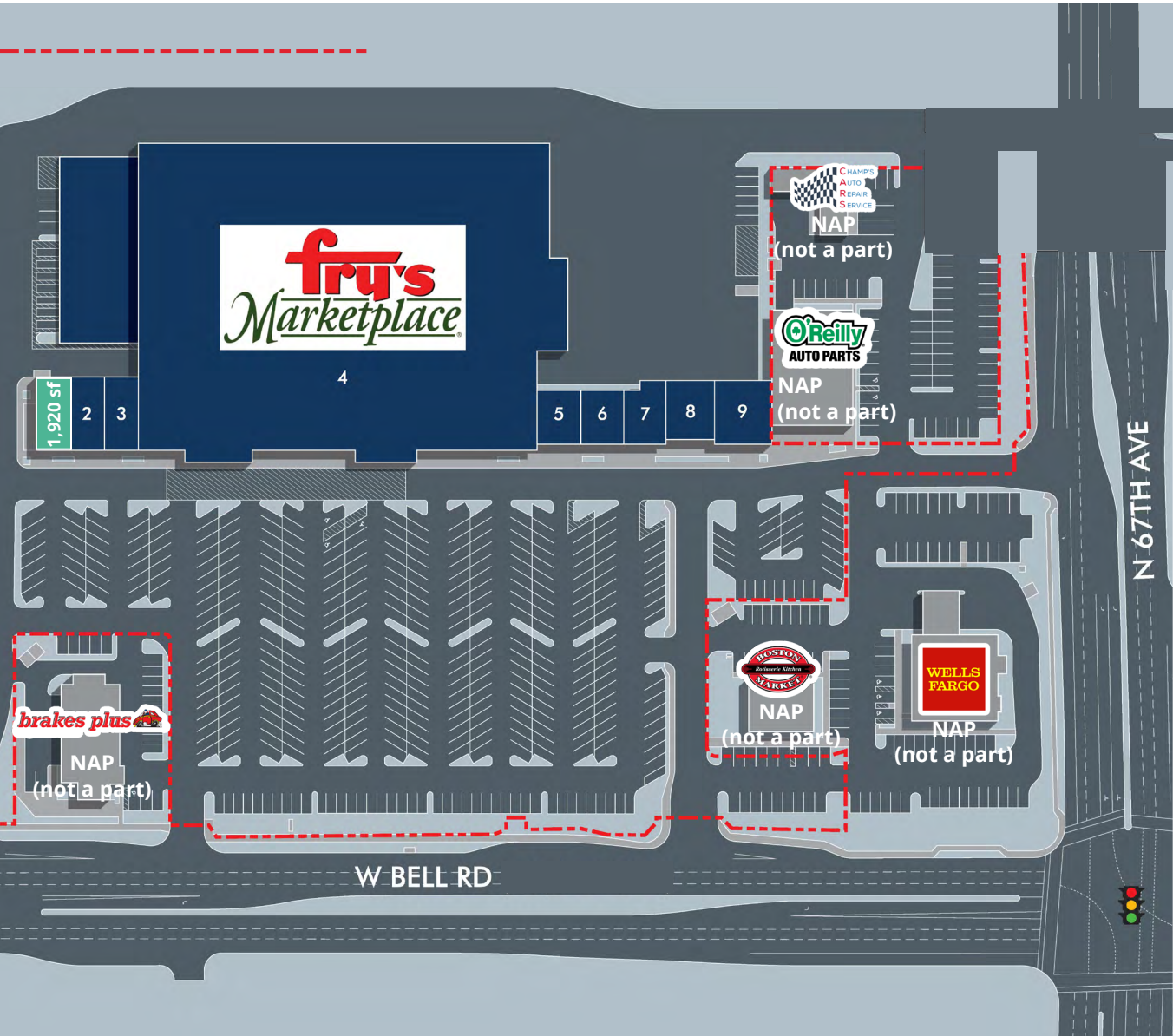
tate.blalock@avisonyoung.com

2720 E Camelback Road | Suite 150 | Phoenix, AZ 85016 | www.avisonyoung.com

© 2024 Avison Young - Arizona, Ltd. All rights reserved. E. & O.E.: The information contained herein was obtained from sources which we deem reliable and, while thought to be correct, is not guaranteed by Avison Young.

Site plan & availability

Shop space coming available
SEC 67th Ave & Bell Rd



#	Tenant	Size
1	Coming available (Please Do Not Disturb)	1,920 sf
2	Good Nails by Tony	910 sf
3	Tasty Pot	2,689 sf
4	Fry's Marketplace	104,949 sf
5	Next Level Exclusive Barbershop	1,134 sf
6	Bubble Cups	1,054 sf
7	My Dr. Now	1,991 sf
8	Caramba	3,140 sf
9	IL Primo	2,570 sf

Photos

Shop space coming available
SEC 67th Ave & Bell Rd





Trade area


Shop space coming available
SEC 67th Ave & Bell Rd





Demographics

	1-mile	3-miles	5-miles
Population	12,775	123,472	347,133


	1-mile	3-miles	5-miles
Median age	40.0	38.5	39.4

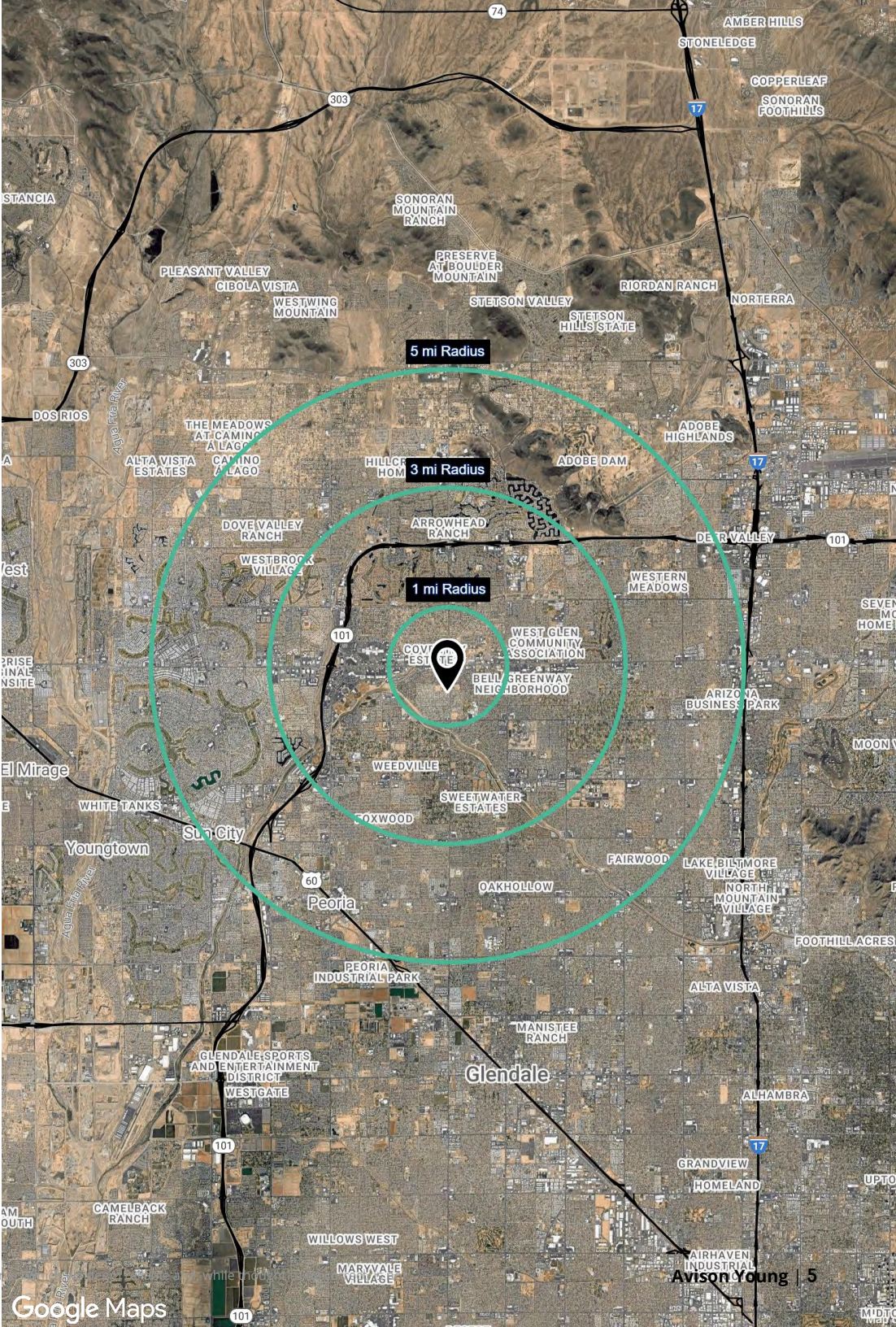
	1-mile	3-miles	5-miles
Daytime employment	6,075	42,286	86,135

	1-mile	3-miles	5-miles
Avg. HH income	\$106,716	\$110,081	\$104,332

	1-mile	3-miles	5-miles
HH units	5,075	48,823	143,964

Traffic counts

	67th Avenue	±26,296 cpd
	Bell Road	±53,714 cpd





Visit us online
avisonyoung.com

© 2024 Avison Young - Arizona, Ltd. All rights reserved.

E. & O.E.: The information contained herein was obtained from sources which we deem reliable and, while thought to be correct, is not guaranteed by Avison Young.

2720 E Camelback Road | Suite 150 | Phoenix, AZ 85016 | 480 994 8155

**AVISON
 YOUNG**