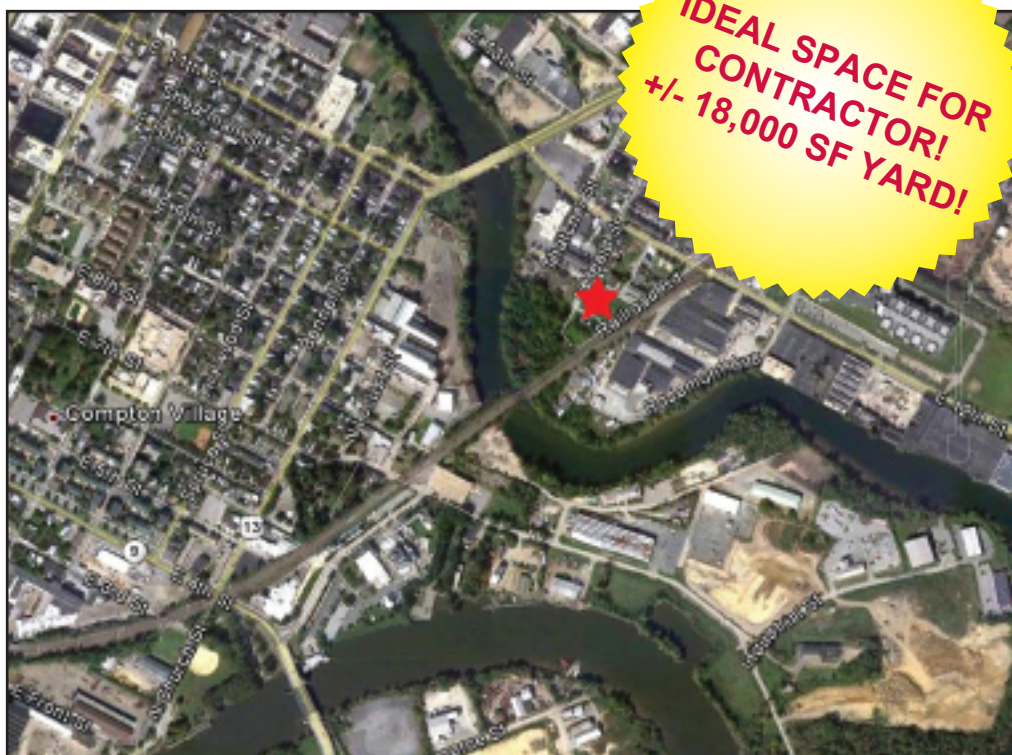




# 1000 N. Heald Street

## Lease/Contractor Space

### Wilmington, DE 19801



- +/- 2,424 square feet available in the building.

- The space is approximately 36' wide & 58' deep, with unfinished office: 24' x 14'.

- Large fenced-in lot for outside storage with separate gate access.

- Located at the corner of N. Heald Str. & E. Eleventh Str.

- Entire building measures 5,646 square feet.

- Plumbing hook-ups for bath and toilet as well.

- Large (16 x 10) overhead door could be added on the Eleventh Str. side.

- Tax parcel address is 1120 E. Eleventh Str.

- One mile to I-495

- Electric available. No heat or water.

- Rent: \$3,500/mo.

# NAI Emory Hill

Commercial Real Estate Services, Worldwide.

Tim Plemmons  
phone 302 322 9500  
cell 610 675 5591  
www.emoryhill.com  
tplemmons@emoryhill.com

Jon Hickey  
phone 302 322 9500  
fax 302 322 9518  
www.emoryhill.com  
jonhickey@emoryhill.com

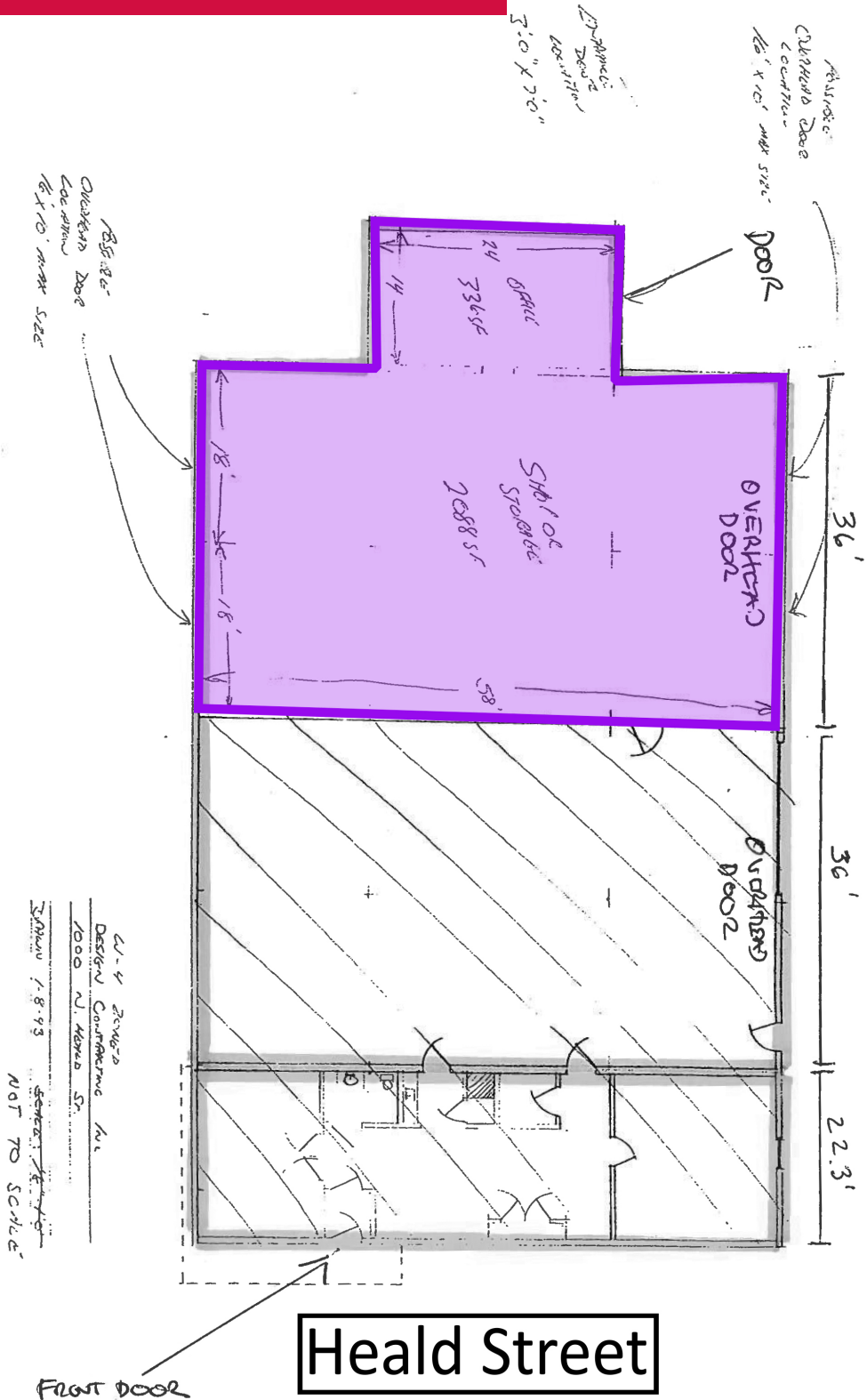
All information contained in this property profile is from sources deemed reliable but no guarantee is made as to its accuracy. Any prospective tenant/buyer should verify the information to their own satisfaction by their own inspection. NAI Emory Hill Real Estate Services, Inc. has fiduciary responsibilities to the owner, but is obligated to treat all parties fairly.

# 1000 N. Heald Street

Available  
2,424 SF

Occupied  
3,222 SF

11th Street



**NAI Emory Hill**

Commercial Real Estate Services, Worldwide.

Tim Plemmons  
phone 302 322 9500  
cell 610 675 5591  
www.emoryhill.com  
tplemmons@emoryhill.com

Jon Hickey  
phone 302 322 9500  
fax 302 322 9518  
www.emoryhill.com  
jonhickey@emoryhill.com

All information contained in this property profile is from sources deemed reliable but no guarantee is made as to its accuracy. Any prospective tenant/buyer should verify the information to their own satisfaction by their own inspection. NAI Emory Hill Real Estate Services, Inc. has fiduciary responsibilities to the owner, but is obligated to treat all parties fairly.