



5056 & 5110 Jellison Rd

5056 Jellison Rd | Billings, Montana 59101

Property Highlights

- 2.498 Acres
- 4 structures
- 17,988 SF total
- 7 Overhead doors
- Loading dock
- Outside City Limits

Property Description

Introducing a prime industrial property for sale, strategically located just south of Billings! Spanning 2.498 acres, this expansive site boasts a total of 17,988 square feet across four structures. With seven overhead doors and a convenient loading dock, this property is tailored to meet the diverse needs of businesses in the industrial sector. The ample space provides flexibility for various operations, making it an ideal investment for those seeking a strategic location in the heart of commercial activities.

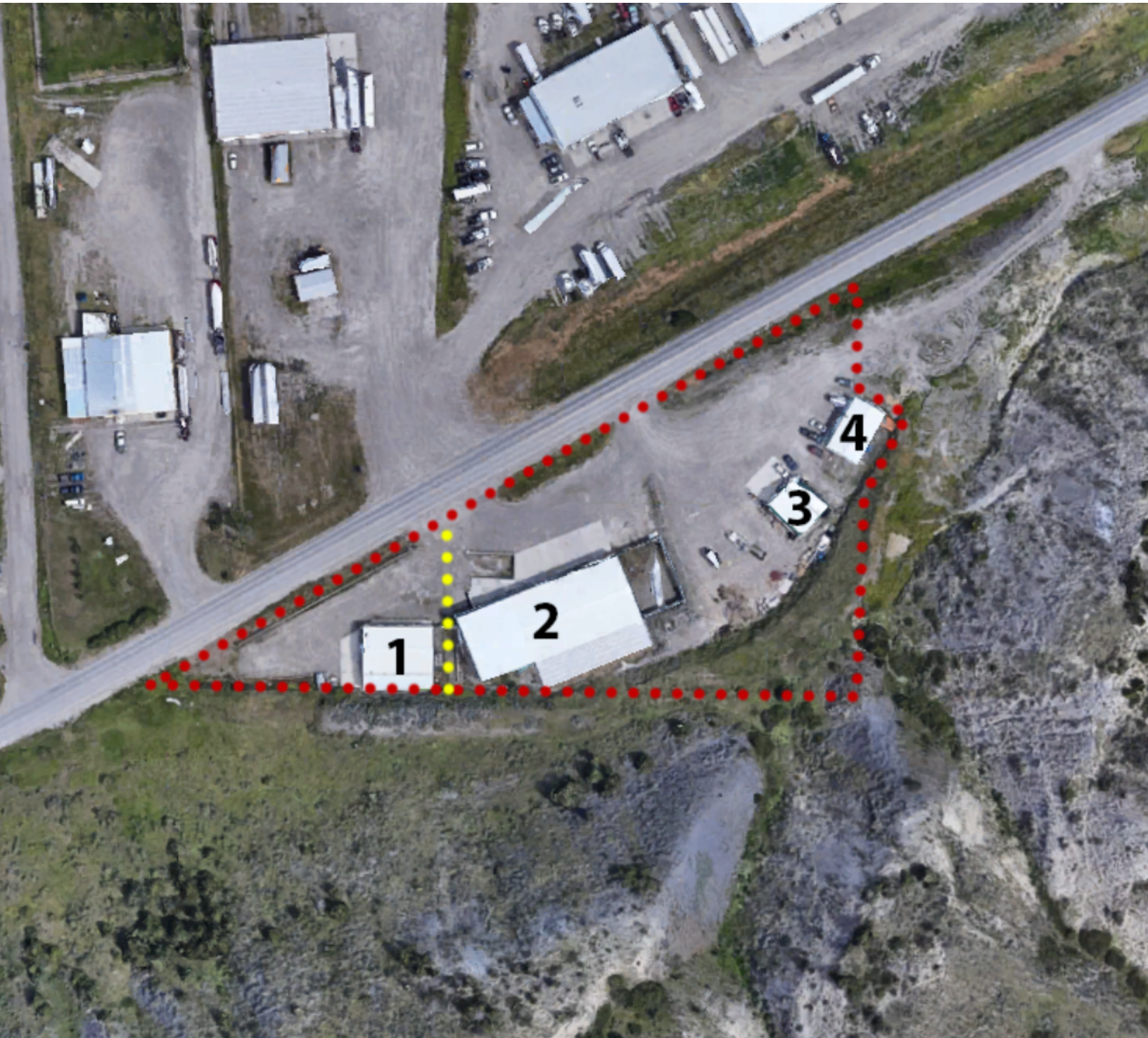
OFFERING SUMMARY

Sale Price:	\$1,495,000
Number of Units:	4
Lot Size:	108,812 SF
Building Size:	17,988 SF

DEMOGRAPHICS	1 MILE	5 MILES	10 MILES
Total Households	142	30,503	58,047
Total Population	303	62,578	126,615
Average HH Income	\$77,773	\$66,886	\$81,376







Haley Vannatta, CCIM

Broker | 406.294.6317

hvannatta@naibusinessproperties.com | MT #62446

Matt Robertson, SIOR

Broker/Principal | 406.294.6308

mrobertson@naibusinessproperties.com