

FLEX FOR LEASE

3909 EASTERN AVE

Baltimore, MD 21224

Available: 7,500 SF



LISTING DATA

TOTAL SF: 7,500 SF
OFFICE/SHOWROOM: 4,000 SF
WAREHOUSE: 3,500 SF

ECONOMIC DATA

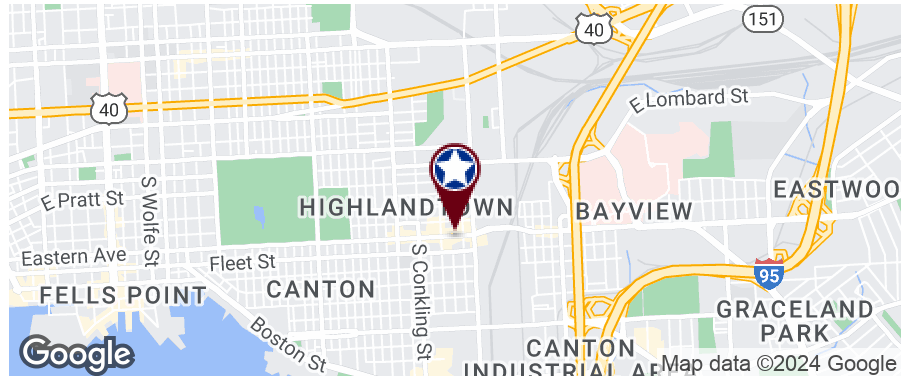
LEASE RATE: Call For Info

PROPERTY INFORMATION

COUNTY: Baltimore City
MARKET: Baltimore

BUILDING DATA

TOTAL BUILDING SF: 7,500 SF
YEAR BUILT: 1910
ZONING: C-1



PROPERTY OVERVIEW

A beautiful 7,500 SF flex space with a 4,000 SF office/showroom spanning across two levels and a 3,500 SF warehouse with a small mezzanine.

PROPERTY HIGHLIGHTS

- High visibility on Eastern Avenue.
- Large space with a wide range of potential uses.
- Parking available in rear.

Kate Jordan, SIOR
Principal
410.336.5314
kjordan@lee-associates.com

Marley Welsh, SIOR
Principal
443.741.4050
mwelsh@lee-associates.com

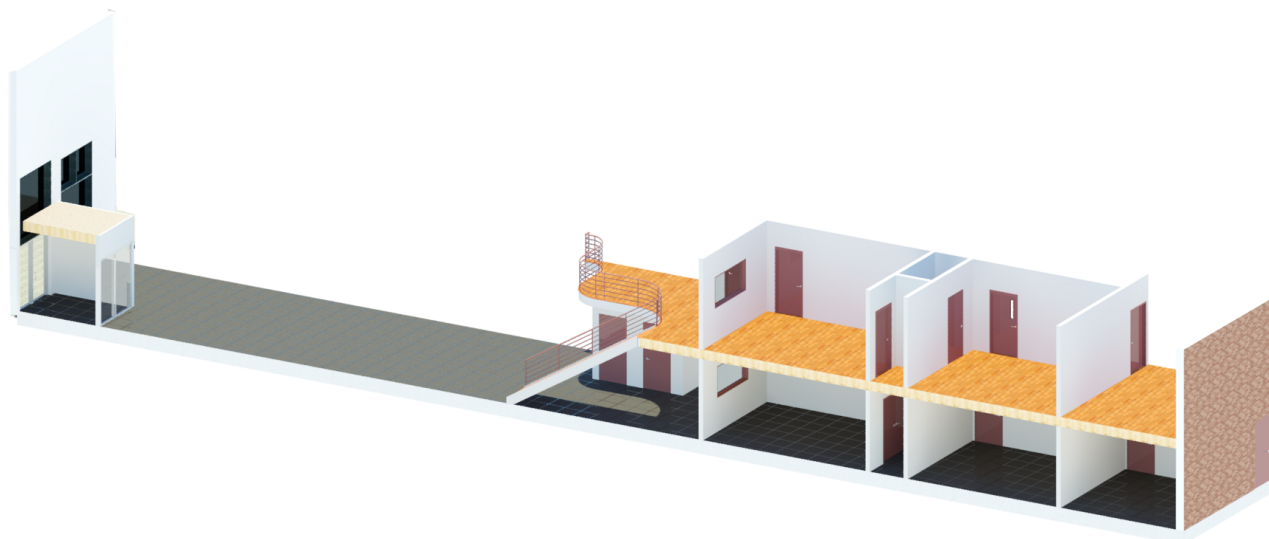
Samantha Eckels
Associate
443.741.4047
seckels@lee-associates.com

All information furnished regarding property for sale, rental or financing is from sources deemed reliable, but no warranty or representation is made to the accuracy thereof and same is submitted to errors, omissions, change of price, rental or other conditions prior to sale, lease or financing or withdrawal without notice. No liability of any kind is to be imposed on the broker herein.

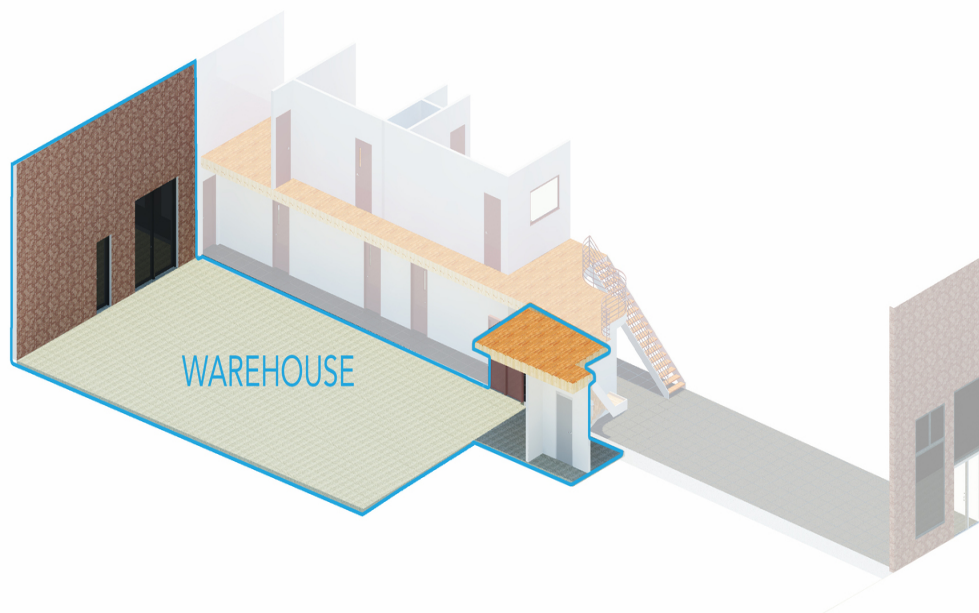
FLEX FOR LEASE
3909 EASTERN AVE

Baltimore, MD 21224

Available: 7,500 SF



3905 Eastern Ave | 4,000 SF Call for lease rate | 4,000 SF office/showroom



3905 Eastern Ave | 3,500 SF | Call for lease rate | 3,500 SF warehouse

Kate Jordan, SIOR
Principal
410.336.5314
kjordan@lee-associates.com

Marley Welsh, SIOR
Principal
443.741.4050
mwelsh@lee-associates.com

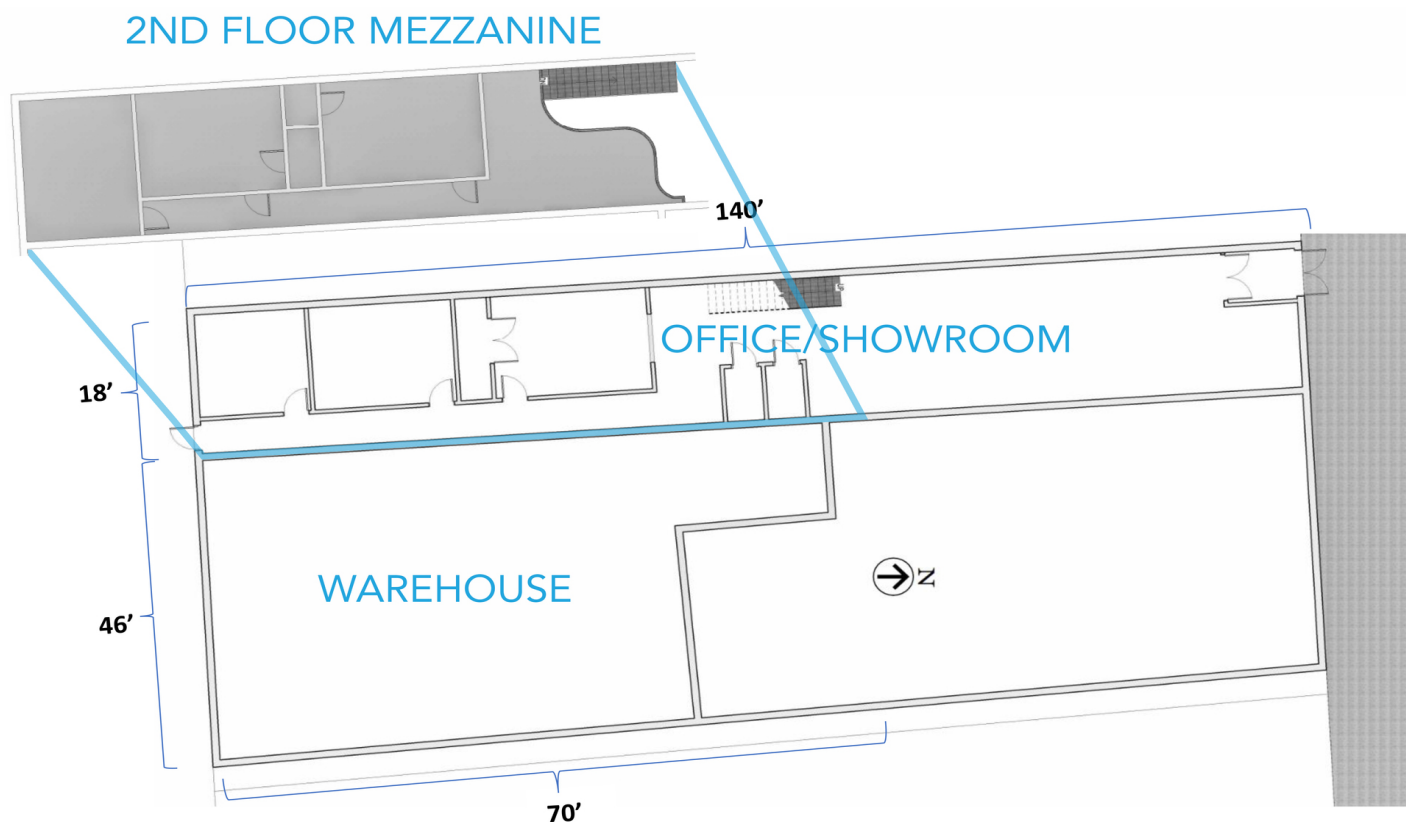
Samantha Eckels
Associate
443.741.4047
seckels@lee-associates.com

All information furnished regarding property for sale, rental or financing is from sources deemed reliable, but no warranty or representation is made to the accuracy thereof and same is submitted to errors, omissions, change of price, rental or other conditions prior to sale, lease or financing or withdrawal without notice. No liability of any kind is to be imposed on the broker herein.

FLEX FOR LEASE
3909 EASTERN AVE

Baltimore, MD 21224

Available: 7,500 SF



FIRST & SECOND FLOORS

Kate Jordan, SIOR
Principal
410.336.5314
kjordan@lee-associates.com

Marley Welsh, SIOR
Principal
443.741.4050
mwelsh@lee-associates.com

Samantha Eckels
Associate
443.741.4047
seckels@lee-associates.com

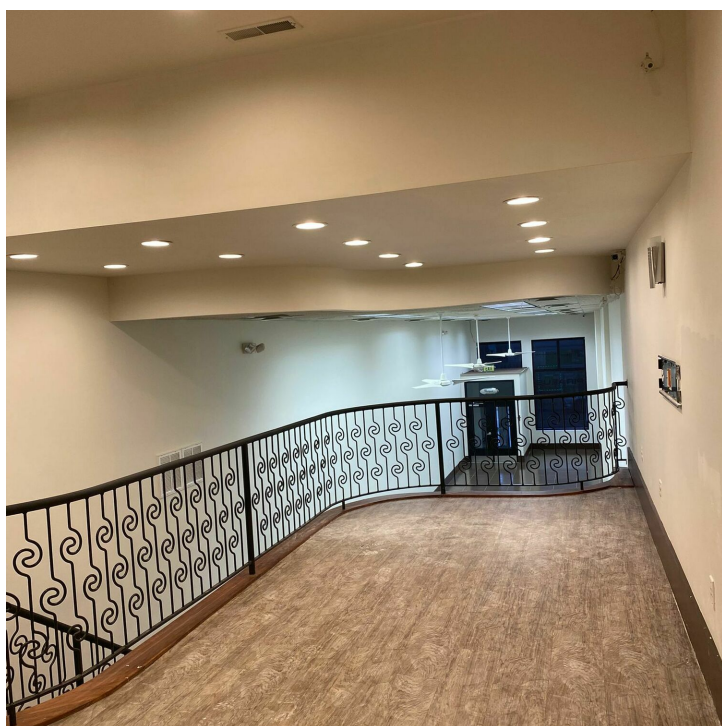
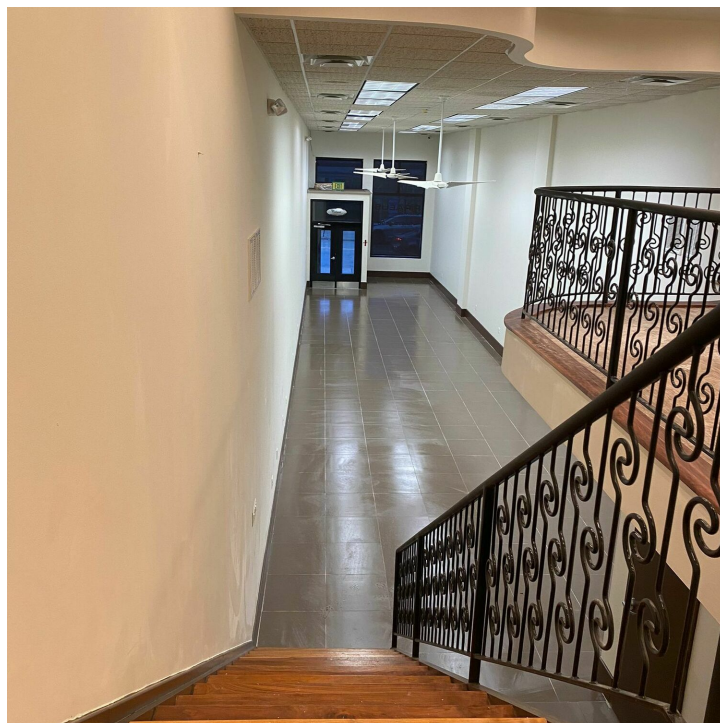
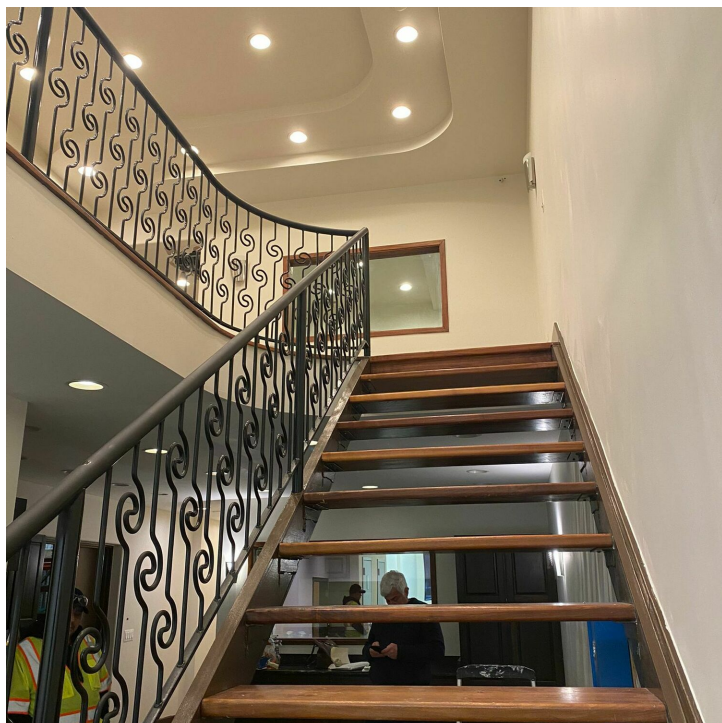
All information furnished regarding property for sale, rental or financing is from sources deemed reliable, but no warranty or representation is made to the accuracy thereof and same is submitted to errors, omissions, change of price, rental or other conditions prior to sale, lease or financing or withdrawal without notice. No liability of any kind is to be imposed on the broker herein.

FLEX FOR LEASE
3909 EASTERN AVE

Baltimore, MD 21224

Available: 7,500 SF

LEE & ASSOCIATES
COMMERCIAL REAL ESTATE SERVICES



Kate Jordan, SIOR
Principal
410.336.5314
kjordan@lee-associates.com

Marley Welsh, SIOR
Principal
443.741.4050
mwelsh@lee-associates.com

Samantha Eckels
Associate
443.741.4047
seckels@lee-associates.com

All information furnished regarding property for sale, rental or financing is from sources deemed reliable, but no warranty or representation is made to the accuracy thereof and same is submitted to errors, omissions, change of price, rental or other conditions prior to sale, lease or financing or withdrawal without notice. No liability of any kind is to be imposed on the broker herein.