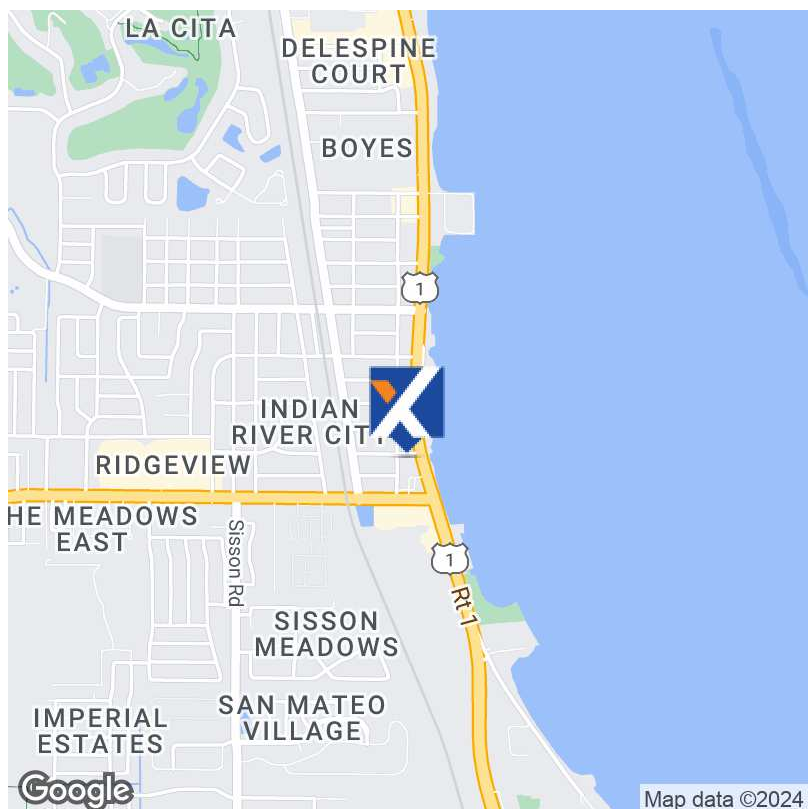


# FOR LEASE | High-Value Parcel of Land



## OFFERING SUMMARY

Lease Rate:	\$120,000.00 Acre/yr (Ground)
Available SF:	1.16 Acres
Lot Size:	1.16 Acres
Number of Units:	1
Year Built:	1952
Zoning:	IRC-N-C

## PROPERTY OVERVIEW

On a high-value parcel of land, this property offers generous space, allowing for the flourishing of businesses in a premier setting with limitless potential for expansion.

Benefit from maximum exposure and visibility with frontage directly on the high-traffic US 1 corridor, ensuring a steady flow of potential customers passing by daily. Take advantage of this large, 1.16 acre lot in a strategic location.

Located in a highly desirable area with easy access to I-95 and Highway 50 and nearby amenities, this property insures convenient accessibility for customers and employees, enhancing the overall appeal and convenience of your business location.

Enjoy breathtaking views of the tranquil river from various vantage points from this property. Enhance your business environment with a view of space launches as your backdrop.

\*IRC-N-C Zoning - Please verify your intended use with the City of Titusville\*

## PROPERTY HIGHLIGHTS

**Holly Carver**

321.243.8967  
Holly@RocketCityRE.com

**Lisa Earnhardt**

321.291.6601  
Lisa@RocketCityRE.com

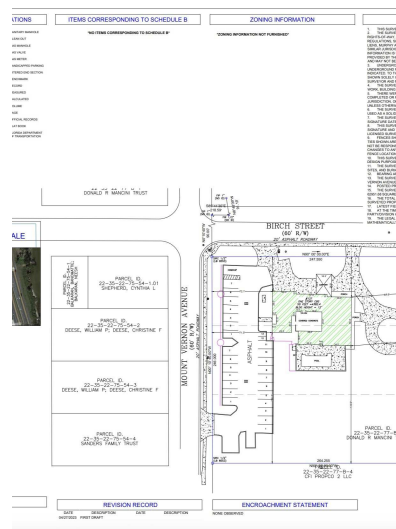
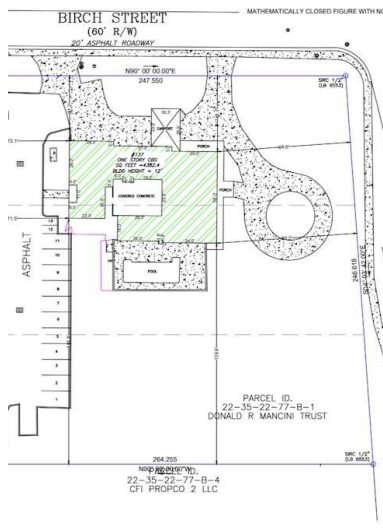
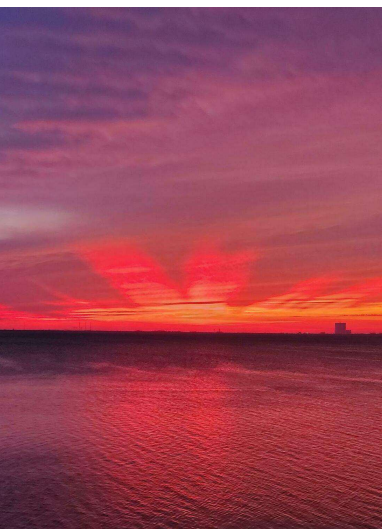
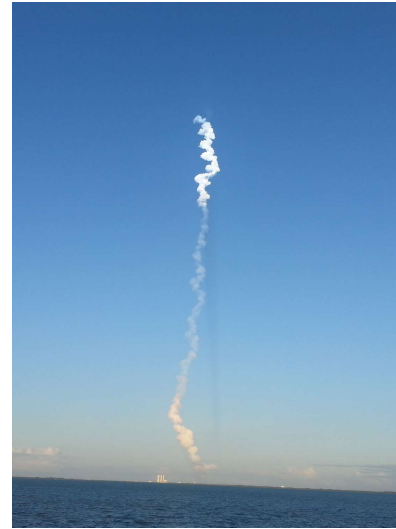
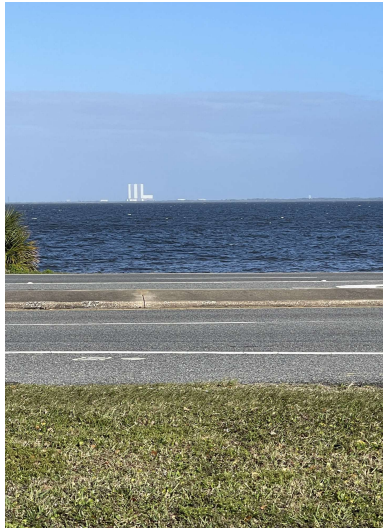
**exp**<sup>TM</sup>  
COMMERCIAL

**ROCKET CITY**  
COMMERCIAL **exp**  
COMMERCIAL

eXp Commercial, LLC, its direct and indirect parents and their subsidiaries (together, "We") obtained the information above from sources believed to be reliable, however, We have not verified its accuracy and make no guarantee, warranty or representation, expressed or implied, about such information. The information contained above is submitted subject to the possibility of errors, omissions, price changes, rental or other conditions, prior sale, lease or financing, or withdrawal without notice. Any projections, opinions, assumptions or estimates of the information contained above or provided in connection therewith, either expressed or implied, are for example only, and they may not represent current or future performance of the subject property. You, together with your tax and legal advisors, should conduct your own thorough investigation of the subject property and potential investment.



# FOR LEASE | High-Value Parcel of Land



**Holly Carver**

321.243.8967

Holly@RocketCityRE.com

**Lisa Earnhardt**

321.291.6601

Lisa@RocketCityRE.com

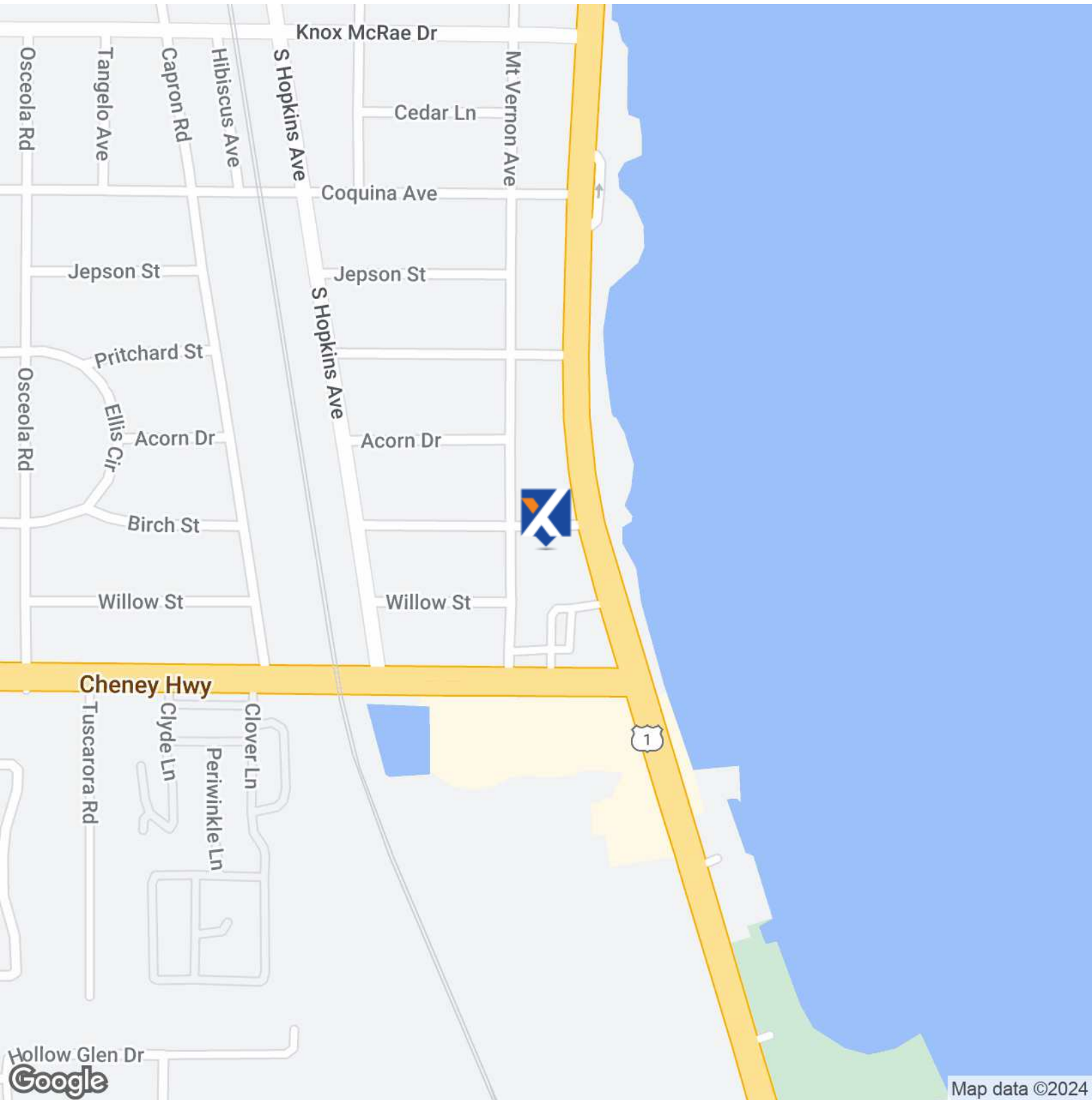
**exp**  
COMMERCIAL

**ROCKET CITY**  
COMMERCIAL **exp**  
COMMERCIAL

eXp Commercial, LLC, its direct and indirect parents and their subsidiaries (together, "We") obtained the information above from sources believed to be reliable, however, We have not verified its accuracy and make no guarantee, warranty or representation, expressed or implied, about such information. The information contained above is submitted subject to the possibility of errors, omissions, price changes, rental or other conditions, prior sale, lease or financing, or withdrawal without notice. Any projections, opinions, assumptions or estimates of the information contained above or provided in connection therewith, either expressed or implied, are for example only, and they may not represent current or future performance of the subject property. You, together with your tax and legal advisors, should conduct your own thorough investigation of the subject property and potential investment.



# FOR LEASE | High-Value Parcel of Land



**Holly Carver**

321.243.8967

Holly@RocketCityRE.com

**Lisa Earnhardt**

321.291.6601

Lisa@RocketCityRE.com

**exp**<sup>TM</sup>  
COMMERCIAL

**ROCKET CITY**  
COMMERCIAL **exp**  
COMMERCIAL

eXp Commercial, LLC, its direct and indirect parents and their subsidiaries (together, "We") obtained the information above from sources believed to be reliable, however, We have not verified its accuracy and make no guarantee, warranty or representation, expressed or implied, about such information. The information contained above is submitted subject to the possibility of errors, omissions, price changes, rental or other conditions, prior sale, lease or financing, or withdrawal without notice. Any projections, opinions, assumptions or estimates of the information contained above or provided in connection therewith, either expressed or implied, are for example only, and they may not represent current or future performance of the subject property. You, together with your tax and legal advisors, should conduct your own thorough investigation of the subject property and potential investment.