



**TRI STATE
COMMERCIAL®**
REAL ESTATE EXPERTS

For Lease



2,000 SF Retail Condo in Prime Bushwick

2,000 SF

1155 Broadway • Brooklyn • NY

For Pricing **Call: 718-437-6100**

Shlomi Bagdadi
📞 718.437.6100
sb@tristatecr.com

Eddie Keda
📞 718.437.6100 x117
Eddie.K@TriStateCR.com

Morris Mishan
📞 718.437.6100
morris.m@tristatecr.com



Location Overview

Located in the Bushwick neighborhood between Kosciuszko St & Kossuth Pl at the foot of the Kosciuszko St subway station.

Nearest Transit: J train at Kosciuszko St. and the B47 bus line.

Nearby tenants include Little Caesars, BK Bagels, Papa John's, Sprout Market, Dunkin', Popeye's Louisiana Kitchen, Paragon, Taco Bell Cantina, Walgreens, McDonald's, Domino's Pizza, Rite Aid, and more!

Main Highlights

- ▶ New development
- ▶ Beautiful, brand-new retail space
- ▶ Ground Floor: 2,000 SF
- ▶ Basement: 1,500 SF



15,779 SF

Total Building Size



3,225 SF

Lot Size



2,500 SF

Basement

FOR LEASE • 2,000 SF • For Pricing

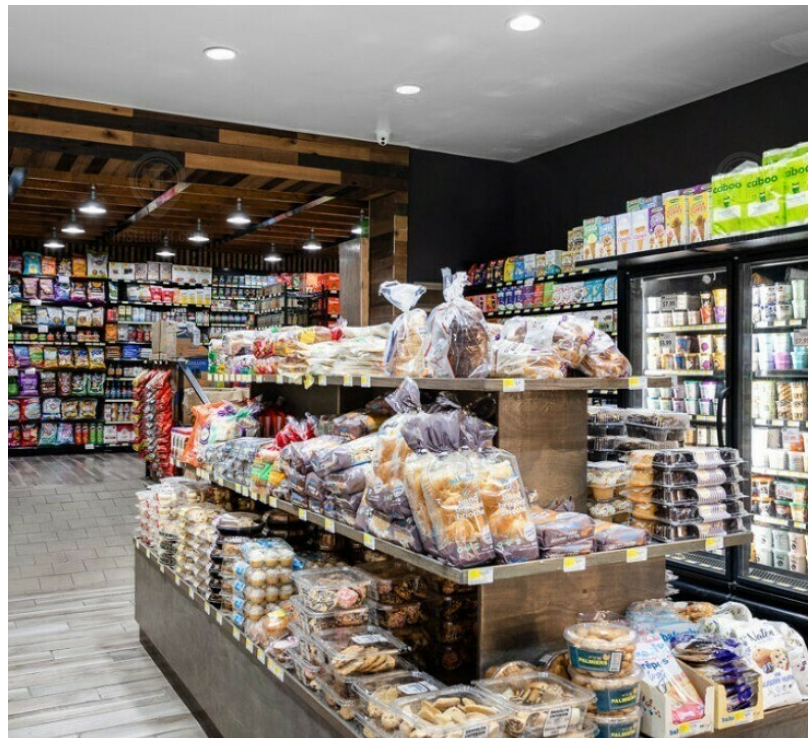
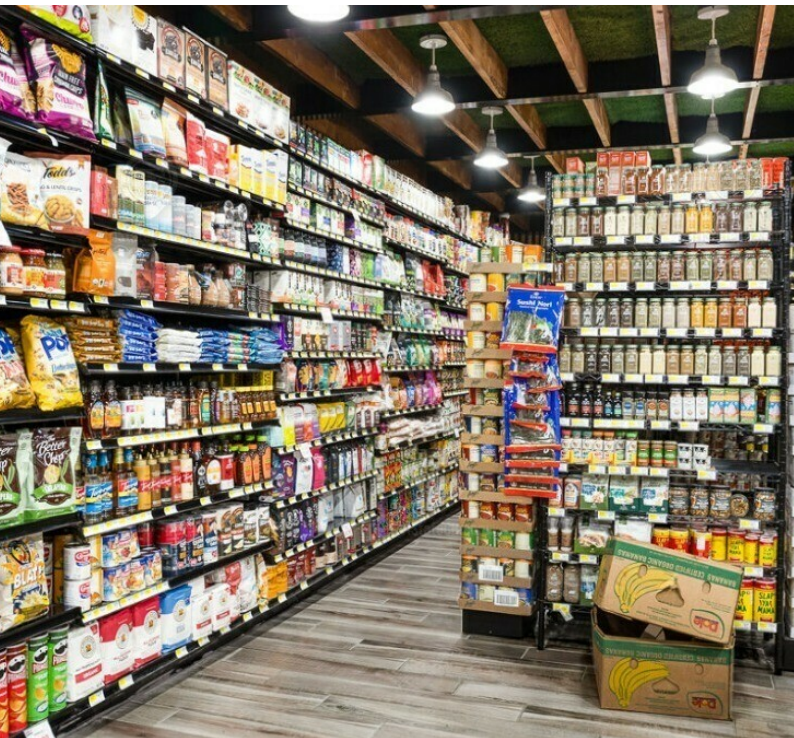
Call: 718-437-6100

Shlomi Bagdadi
 ☎ 718.437.6100
 sb@tristatecr.com

Eddie Keda
 ☎ 718.437.6100 x117
 Eddie.K@TriStateCR.com

Morris Mishan
 ☎ 718.437.6100
 morris.m@tristatecr.com

Broker is relying on Landlord or other Landlord-supplied sources for the accuracy of said information and has no knowledge of the accuracy of it. Broker makes no representation and/or warranty, expressed or implied, as to the accuracy of such information.



FOR LEASE • 2,000 SF • For Pricing

Call: 718-437-6100

Shlomi Bagdadi
☎ 718.437.6100
sb@tristatecr.com

Eddie Keda
☎ 718.437.6100 x117
Eddie.K@TriStateCR.com

Morris Mishan
☎ 718.437.6100
morris.m@tristatecr.com

Broker is relying on Landlord or other Landlord-supplied sources for the accuracy of said information and has no knowledge of the accuracy of it. Broker makes no representation and/or warranty, expressed or implied, as to the accuracy of such information.



TriStateCR.com

Retailer Map

1155 Broadway, Brooklyn, NY 11221



Map
data
©2024
Google

FOR LEASE • 2,000 SF • For Pricing

Call: 718-437-6100

Shlomi Bagdadi
☎ 718.437.6100
sb@tristatecr.com

Eddie Keda
☎ 718.437.6100 x117
Eddie.K@TriStateCR.com

Morris Mishan
☎ 718.437.6100
morris.m@tristatecr.com

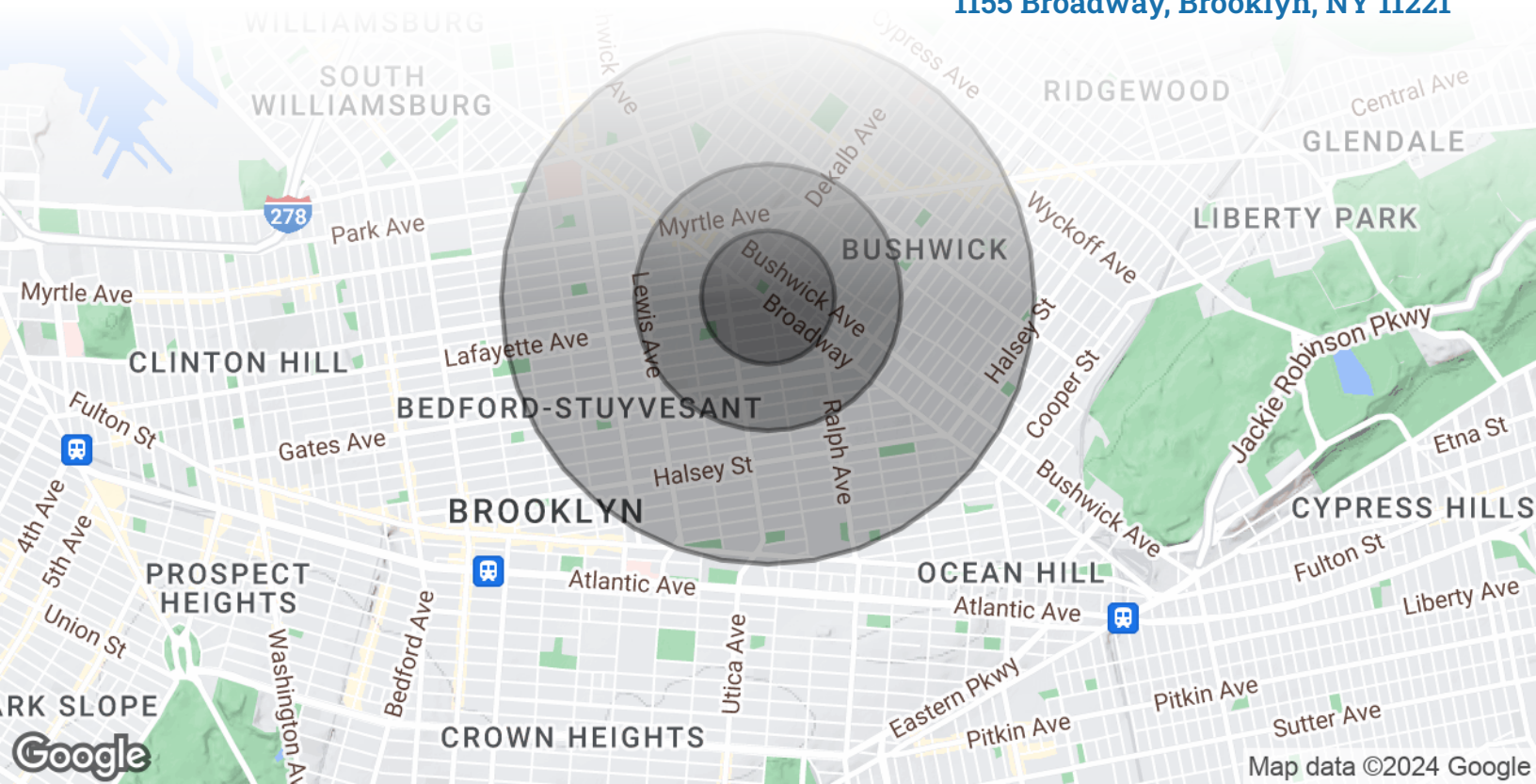
Broker is relying on Landlord or other Landlord-supplied sources for the accuracy of said information and has no knowledge of the accuracy of it. Broker makes no representation and/or warranty, expressed or implied, as to the accuracy of such information.



TriStateCR.com

Area Demographics

1155 Broadway, Brooklyn, NY 11221



POPULATION

0.25 MILES

0.5 MILES

1 MILE

Total Population	11,302	45,707	189,074
Average Age	32.0	32.4	33.1
Average Age (Male)	31.0	31.2	31.5
Average Age (Female)	32.3	33.6	34.4



189,074

People within 1 Mile

HOUSEHOLDS & INCOME

0.25 MILES

0.5 MILES

1 MILE

Total Households	4,780	19,269	79,666
# of Persons per HH	2.4	2.4	2.4
Average HH Income	\$73,881	\$81,273	\$78,688
Average House Value	\$737,389	\$673,655	\$618,603



\$78,688

Avg Household Income

FOR LEASE • 2,000 SF • For Pricing

Call: 718-437-6100

Shlomi Bagdadi
 ☎ 718.437.6100
 sb@tristatecr.com

Eddie Keda
 ☎ 718.437.6100 x117
 Eddie.K@TriStateCR.com

Morris Mishan
 ☎ 718.437.6100
 morris.m@tristatecr.com

Broker is relying on Landlord or other Landlord-supplied sources for the accuracy of said information and has no knowledge of the accuracy of it. Broker makes no representation and/or warranty, expressed or implied, as to the accuracy of such information.

For Lease



TriStateCR.com

2,000 SF | 1155 Broadway | Brand New Retail Space for Lease

2,000 SF • For Pricing **Call: 718-437-6100**

1155 Broadway • Brooklyn • NY

Shlomi Bagdadi

☎ 718.437.6100

sb@tristatecr.com

Eddie Keda

☎ 718.437.6100 x117

Eddie.K@TriStateCR.com

Morris Mishan

☎ 718.437.6100

morris.m@tristatecr.com