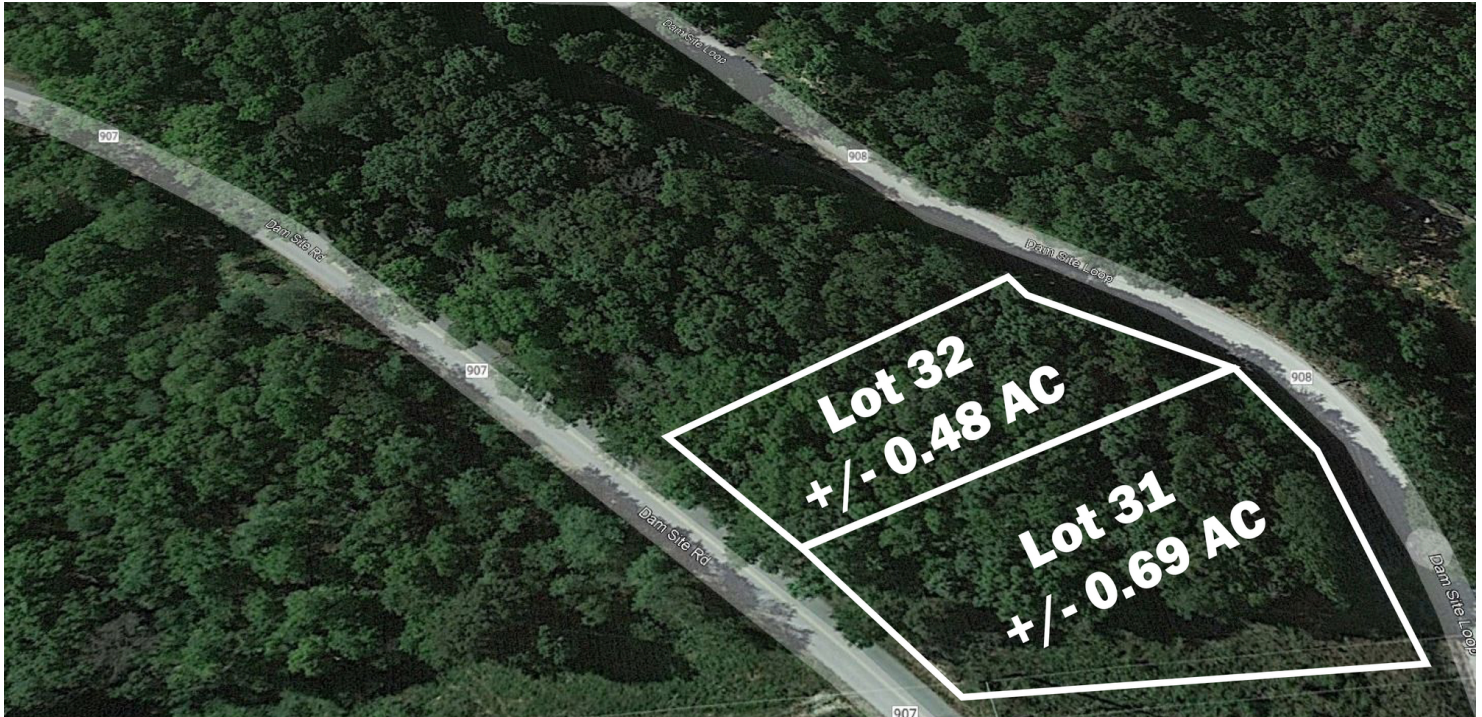


+/- 1.17 ACRES ACROSS 2 LOTS FOR SALE

DAM SITE RD

Garfield, AR 72732



PROPERTY DESCRIPTION

Two lots available totalling +/- 1.17 Acres on Beaver Lake! Live here full time or build your home away from home! Located Approx. 4 miles from Hwy 62, providing easy access into Eureka Springs or Rogers, AR. and 2 miles to the boat ramp. Water is available across the street, Electric available on site.

PROPERTY HIGHLIGHTS

- +/- 1.71 Total Acres
- Lot 31: +/- 0.69 Acres
- Lot 32: +/- 0.48 Acres
- 2 Miles to a Beaver Lake Boat Ramp
- Water available across the street
- Electric Available

OFFERING SUMMARY

Sale Price:	\$39,500
Lot Size:	1.17 Acres

We obtained the information above from sources we believe to be reliable. However, we have not verified its accuracy and make no guarantee, warranty or representation about it. It is submitted subject to the possibility of errors, omissions, change of price, rental or other conditions, prior sale, lease or financing, or withdrawal without notice. We include projections, opinions, assumptions or estimates for example only, and they may not represent current or future performance of the property. You and your tax and legal advisors should conduct your own investigation of the property and transaction.

TIMOTHY SALMONSEN

Executive Broker
O: 479.231.1355
C: 479.330.1250
sgrleadmanager@gmail.com
AR #EB00066512

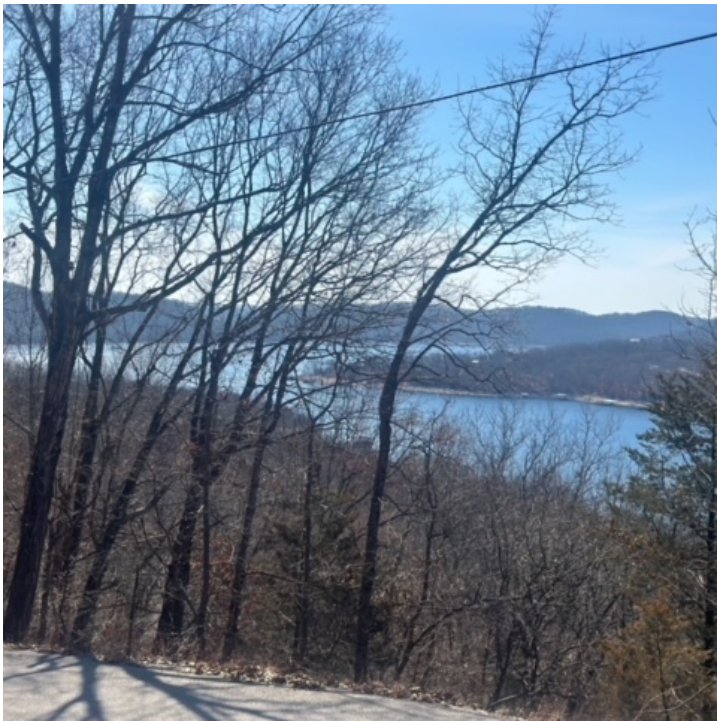
KW COMMERCIAL
201 SW 14th St.
Suite 203
Bentonville, AR 72712

Each Office Independently Owned and Operated salmonsengroup.com

+/- 1.17 ACRES ACROSS 2 LOTS FOR SALE

DAM SITE RD

Garfield, AR 72732



We obtained the information above from sources we believe to be reliable. However, we have not verified its accuracy and make no guarantee, warranty or representation about it. It is submitted subject to the possibility of errors, omissions, change of price, rental or other conditions, prior sale, lease or financing, or withdrawal without notice. We include projections, opinions, assumptions or estimates for example only, and they may not represent current or future performance of the property. You and your tax and legal advisors should conduct your own investigation of the property and transaction.

TIMOTHY SALMONSEN
Executive Broker
O: 479.231.1355
C: 479.330.1250
sgrleadmanager@gmail.com
AR #EB00066512

KW COMMERCIAL
201 SW 14th St.
Suite 203
Bentonville, AR 72712

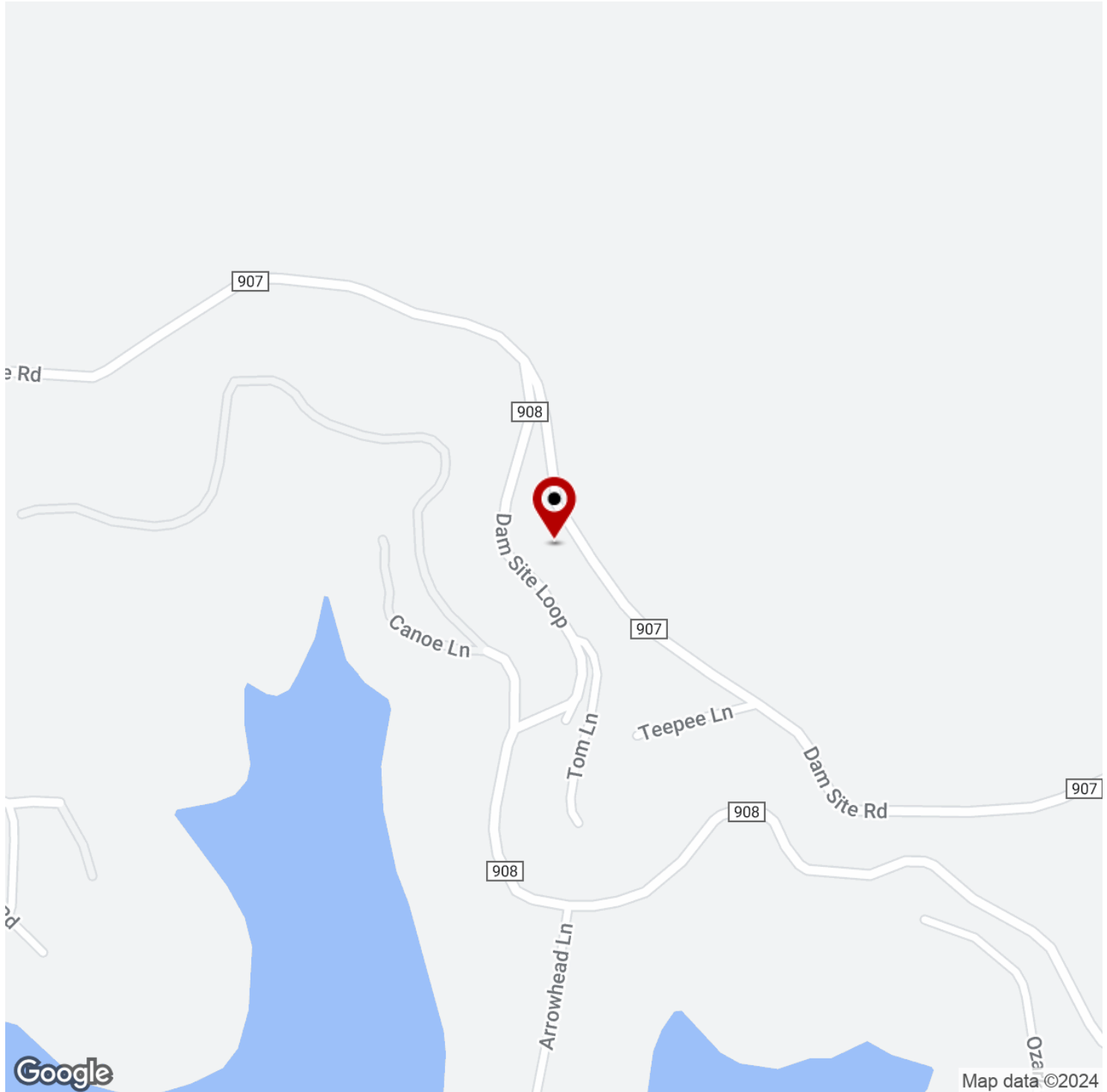
Each Office Independently Owned and Operated salmonsengroup.com

+/- 1.17 ACRES ACROSS 2 LOTS FOR SALE



DAM SITE RD

Garfield, AR 72732



We obtained the information above from sources we believe to be reliable. However, we have not verified its accuracy and make no guarantee, warranty or representation about it. It is submitted subject to the possibility of errors, omissions, change of price, rental or other conditions, prior sale, lease or financing, or withdrawal without notice. We include projections, opinions, assumptions or estimates for example only, and they may not represent current or future performance of the property. You and your tax and legal advisors should conduct your own investigation of the property and transaction.

TIMOTHY SALMONSEN

Executive Broker
O: 479.231.1355
C: 479.330.1250
sgrleadmanager@gmail.com
AR #EB00066512

KW COMMERCIAL

201 SW 14th St.
Suite 203
Bentonville, AR 72712

Each Office Independently Owned and Operated salmonsengroup.com