



For Lease

Retail / Medical / Office / Restaurant
2164-2240 Bloomingdale Rd, Glendale Heights, IL 60139

Plaza Westlake

Retail leasing opportunity at Westlake Plaza in Glendale Heights. Strategically positioned at the junction of Bloomingdale Rd & Army Trail Rd. just West of the I-355 interchange. This prime location is a high-traffic area within an affluent community ensuring a dynamic retail environment. 28,400 vehicles daily on Bloomingdale Rd and 44,600 on Army Trail Rd. guarantee visibility and foot traffic. Choose from versatile spaces, accommodating businesses of all sizes from 800 to 17,564 square feet. Join a prestigious lineup of national retailers including Jewel-Osco, Chase, O'Reilly Auto Parts, FedEx, Great Clips, and more. This location has access to 268,652 residents within a 5-mile radius, boasting an average household income of \$142,000.

This document/email has been prepared by Colliers for advertising and general information only. Colliers makes no guarantees, representations or warranties of any kind, expressed or implied, regarding the information including, but not limited to, warranties of content, accuracy and reliability. Any interested party should undertake their own inquiries as to the accuracy of the information. Colliers excludes unequivocally all inferred or implied terms, conditions and warranties arising out of this document and excludes all liability for loss and damages arising there from. This publication is the copyrighted property of Colliers and /or its licensor(s). © 2022. All rights reserved.

Contact us:

Brad Belden

Senior Vice President

847 698 8232

Brad.Belden@colliers.com

Chris Irwin

Senior Vice President

847 698 8193

Chris.Irwin@Colliers.com

Colliers

colliers.com/chicago

Property Summary



Property Highlights

- 73,000 VPD Hard Corner of Bloomingdale & Army Trail Roads
- GLA: 120,565 SF
- 17,564 sf 2nd Gen Restaurant/Bar/Club w/ Beer Garden
- High volume Jewel-Osco
- Excellent Visibility
- Pylon Signage Available
- Ample Parking
- Signalized Intersection
- 268,652 Residents within 5 miles
- Average HHI of \$142,000

Property Description

Retail leasing opportunity at Westlake Plaza in Glendale Heights. Strategically positioned at the junction of Bloomingdale Rd & Army Trail Road, just West of the I-355 interchange. This prime location is a high-traffic area within an affluent community ensuring a dynamic retail environment. 28,400 vehicles daily on Bloomingdale Rd and 44,600 on Army Trail Rd. Choose from versatile spaces, accommodating businesses of all sizes from 800 to 17,564 square feet. Join a prestigious lineup of national retailers including Jewel-Osco, Chase, O'Reilly Auto Parts, FedEx, Great Clips, and more. This location has access to 268,652 residents within a 5-mile radius, boasting an average household income of \$142,000.

Offering Summary

Lease Rate:	\$16.00 - 21.00 SF/yr (NNN)
Available SF:	800 - 17,564 SF
Building Size:	120,565 SF
Taxes:	\$3.15 SF/yr
Expenses:	\$3.15 SF/yr
Zoning:	C-2

Spaces	Lease Rate	Space Size
2172	\$21.00 SF/yr	2,080 SF
2174	\$19.00 SF/yr	2,400 SF
2178	\$19.00 SF/yr	1,206 SF
2180	\$19.00 SF/yr	1,226 SF
2182	\$21.00 SF/yr	800 SF
2184A	\$18.50 SF/yr	2,357 SF
2188	\$19.00 SF/yr	1,600 SF
2202	\$18.00 SF/yr	3,500 SF
2202B	\$18.00 SF/yr	1,750 SF
2212	\$18.50 SF/yr	3,200 SF
2222	\$19.00 SF/yr	1,600 SF
2240	\$16.00 SF/yr	17,564 SF

Brad Belden
Senior Vice President
847 698 8232
Brad.Belden@colliers.com

Chris Irwin
Senior Vice President
847 698 8193
Chris.Irwin@Colliers.com

Site Plan



SUITE	TENANT	SQ-FT
2164	JEWEL-OSCO	68,020
2172	AVAILABLE	2,080
2174	AVAILABLE	2,400
2178	AVAILABLE	1,206
2180	AVAILABLE	1,226
2182	AVAILABLE	800
2184A	AVAILABLE	2,357
2184B	OSAMA ISMAIL, DDS	807
2186	GREAT CLIPS	1,228
2188	AVAILABLE	1,600
2190	STELLA'S LAREDO HOSPITALITY	1,617
2202	AVAILABLE	3,500
2202B	AVAILABLE	1,750
2204-06	LAUNDRY WORLD	4,810
2210	FOREMOST LIQUORS	3,200
2212	AVAILABLE	3,200
2222	AVAILABLE	1,600
2224	FIVE STAR NAILS	1,600
2240	AVAILABLE	17,564

Brad Belden
Senior Vice President
847 698 8232
Brad.Belden@colliers.com

Chris Irwin
Senior Vice President
847 698 8193
Chris.Irwin@Colliers.com

Property & Area Highlights



120K SF

Building Size



13 Acres

Acreage



C-2

Zoning



750

Parking Spaces



268K

Population



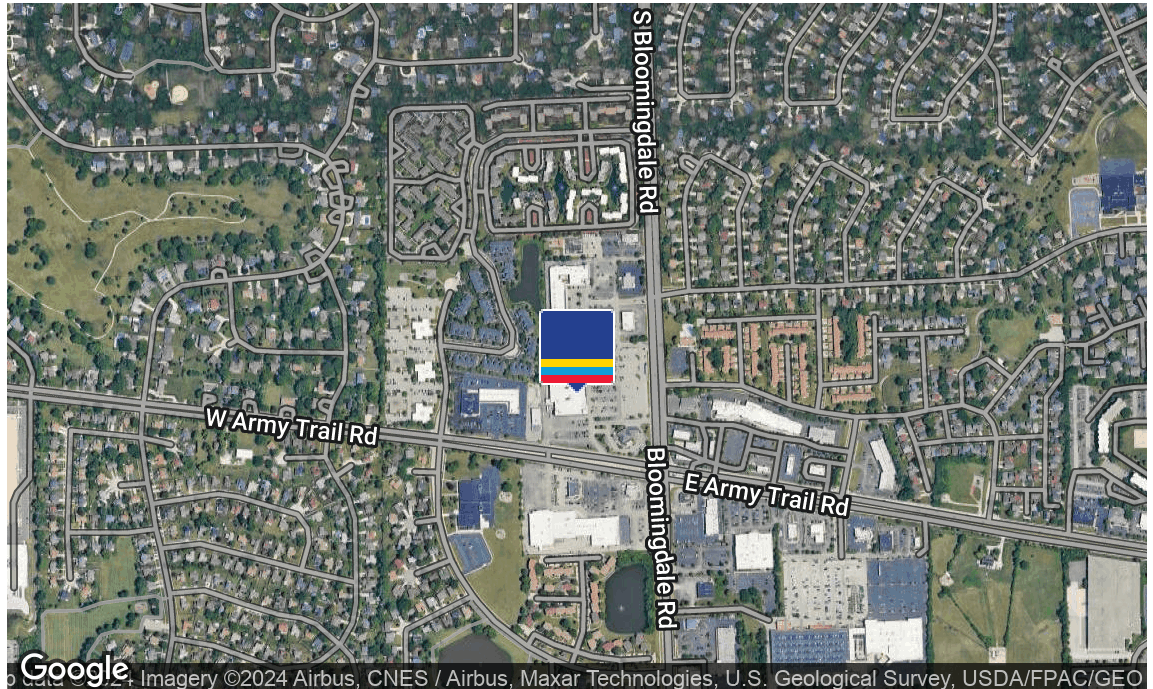
\$142K

Average HHI



73K

Traffic Counts



Location Overview

Nestled in the heart of DuPage County, Glendale Heights, Illinois, is a thriving suburban community that combines accessibility with a rich array of amenities. Conveniently situated approximately 25 miles west of Chicago, this vibrant town offers a diverse range of housing options, from cozy residential neighborhoods to modern developments. The town's strategic location near major highways, such as I-355 and I-290, ensures easy commuting and access to neighboring communities. With a dynamic mix of businesses, schools, and community events, Glendale Heights embodies the perfect blend of suburban tranquility and urban convenience, making it an attractive destination for residents and businesses alike.

Area Tenants

- Jewel-Osco
- Chase
- Huntington
- Great Clips
- O'Reilly
- Kinder Care
- Burger King
- Dunkin
- McDonalds
- Taco Bell
- Home Depot
- 7/11

Brad Belden

Senior Vice President

847 698 8232

Brad.Belden@colliers.com

Chris Irwin

Senior Vice President

847 698 8193

Chris.Irwin@Colliers.com

Unit #2172 - 2,080 sq.ft.



Brad Belden
Senior Vice President
847 698 8232
Brad.Belden@colliers.com

Chris Irwin
Senior Vice President
847 698 8193
Chris.Irwin@Colliers.com

colliers.com/chicago



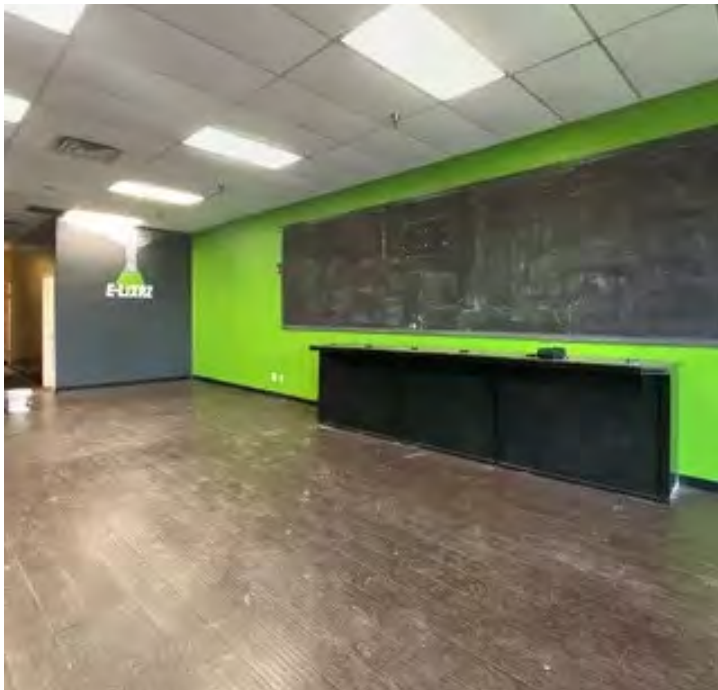
Unit #2174 - 2,400 sq.ft.



Brad Belden
Senior Vice President
847 698 8232
Brad.Belden@colliers.com

Chris Irwin
Senior Vice President
847 698 8193
Chris.Irwin@Colliers.com

Unit #2178 - 1,206 sq.ft.



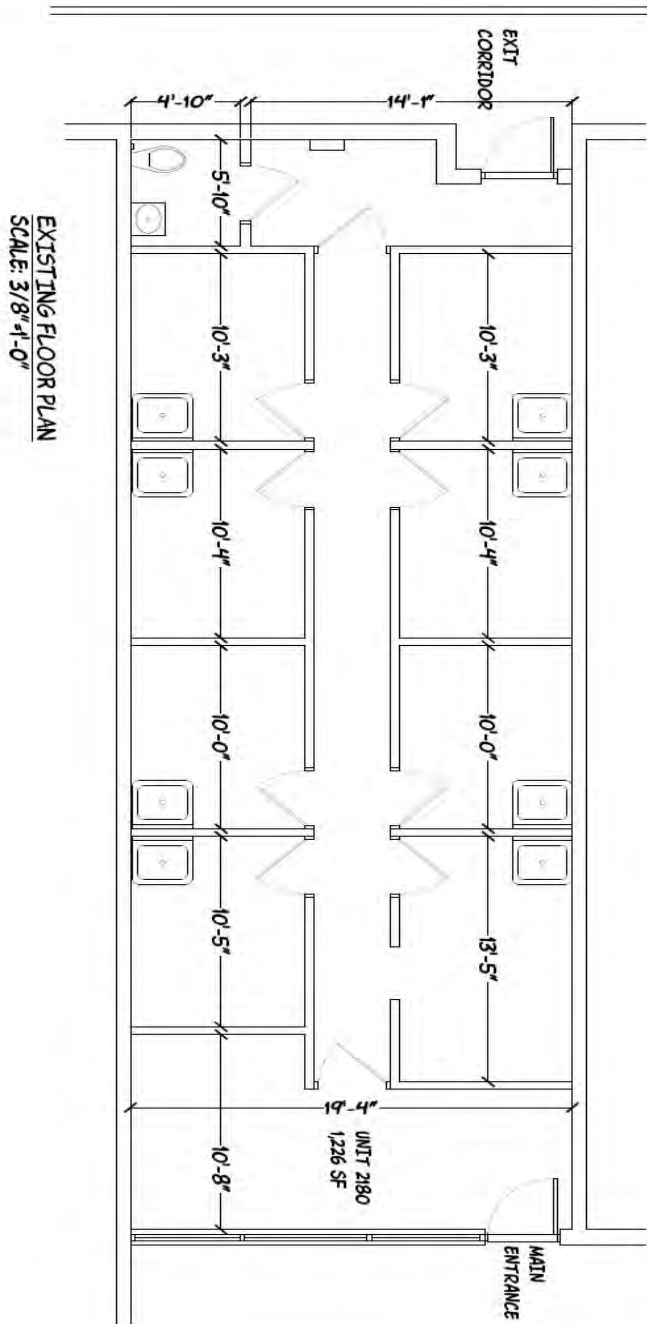
Brad Belden
Senior Vice President
847 698 8232
Brad.Belden@colliers.com

Chris Irwin
Senior Vice President
847 698 8193
Chris.Irwin@Colliers.com

colliers.com/chicago



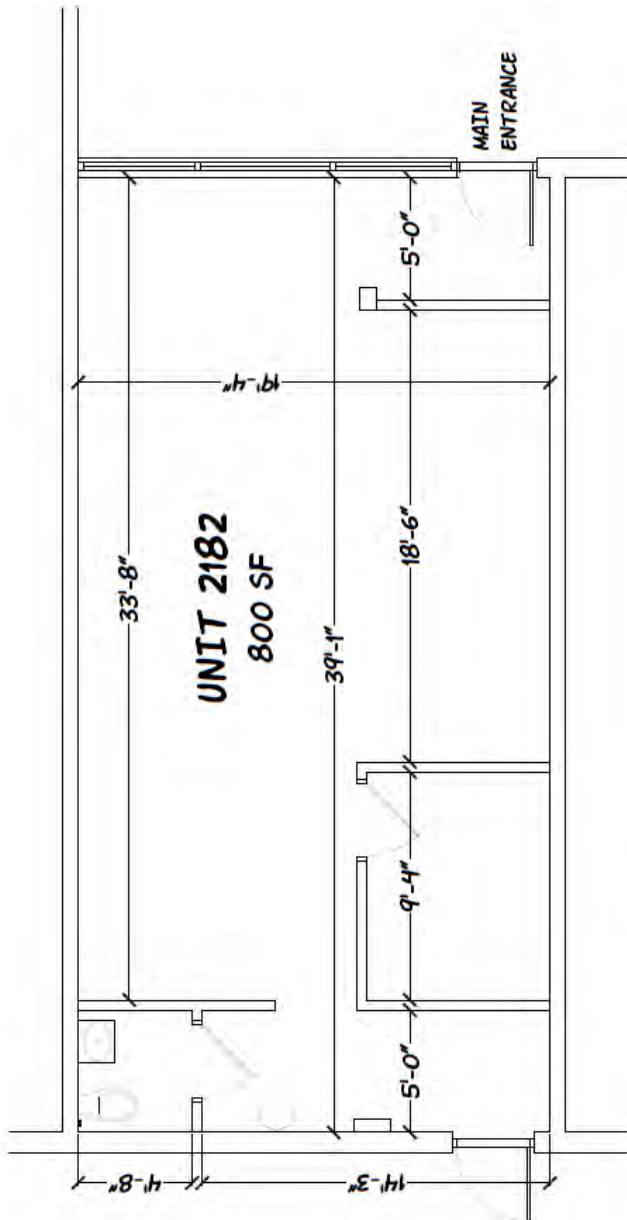
Unit #2180 - 1,226 sq.ft.



Brad Belden
Senior Vice President
847 698 8232
Brad.Belden@colliers.com

Chris Irwin
Senior Vice President
847 698 8193
Chris.Irwin@Colliers.com

Unit #2182 - 800 sq.ft.



EXISTING FLOOR PLAN
SCALE: 1/2"=1'-0"



Brad Belden
Senior Vice President
847 698 8232
Brad.Belden@colliers.com

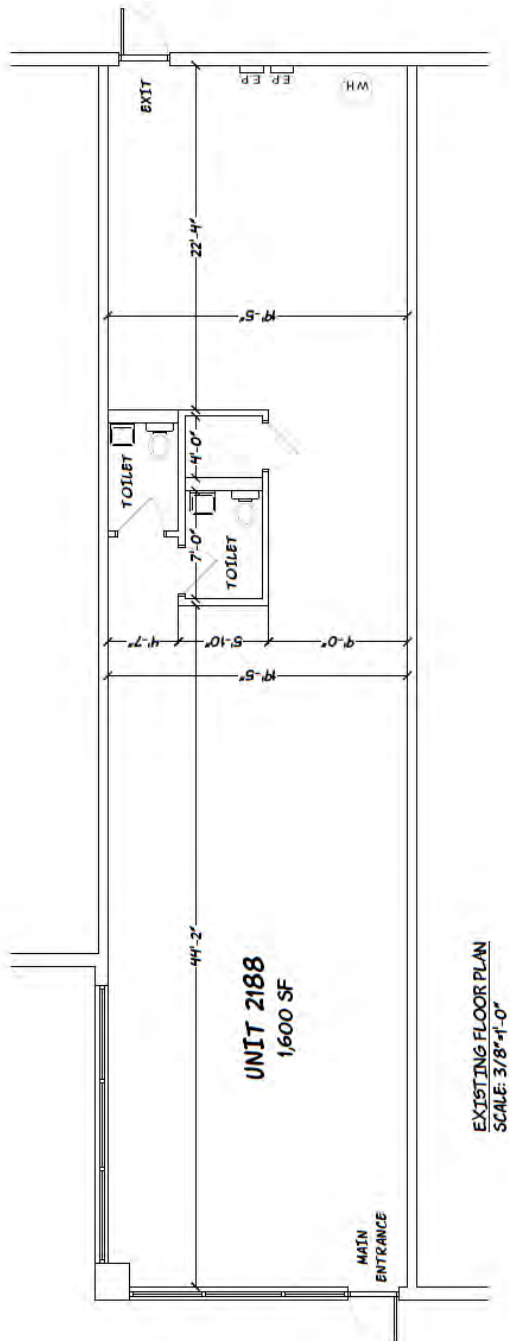
Chris Irwin
Senior Vice President
847 698 8193
Chris.Irwin@Colliers.com

colliers.com/chicago



[illegible]

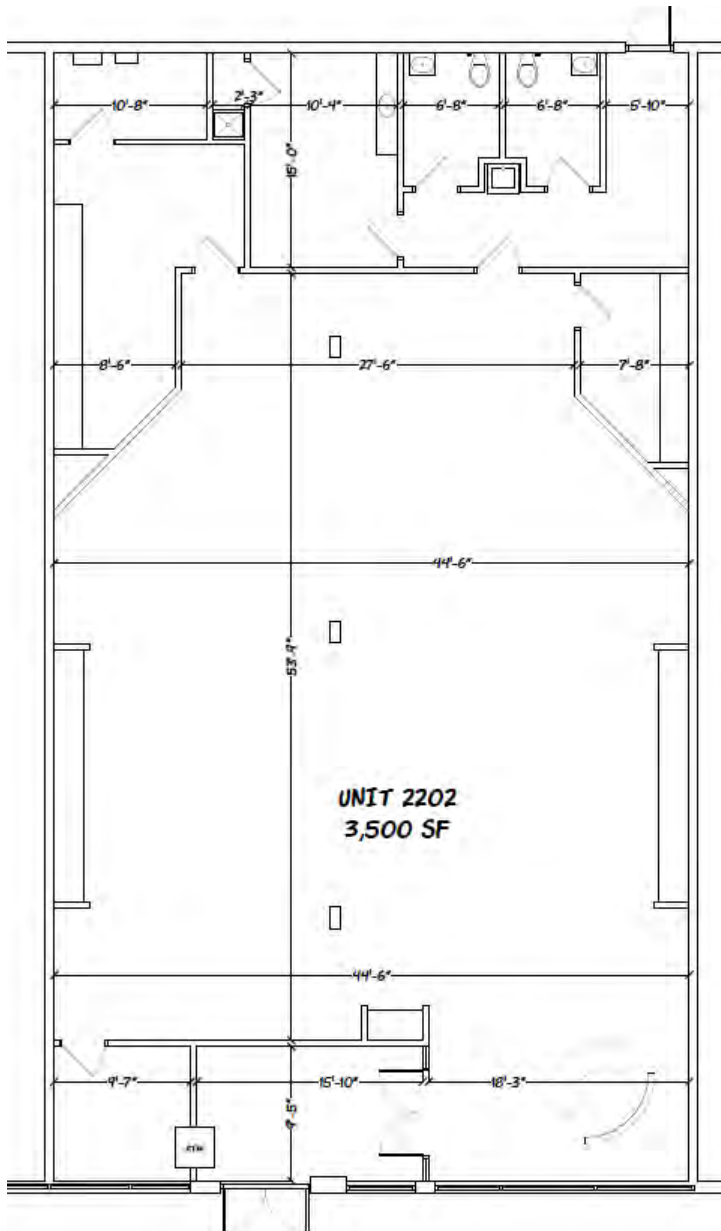
Unit #2188 - 1,600 sq.ft.



Brad Belden
Senior Vice President
847 698 8232
Brad.Belden@colliers.com

Chris Irwin
Senior Vice President
847 698 8193
Chris.Irwin@Colliers.com

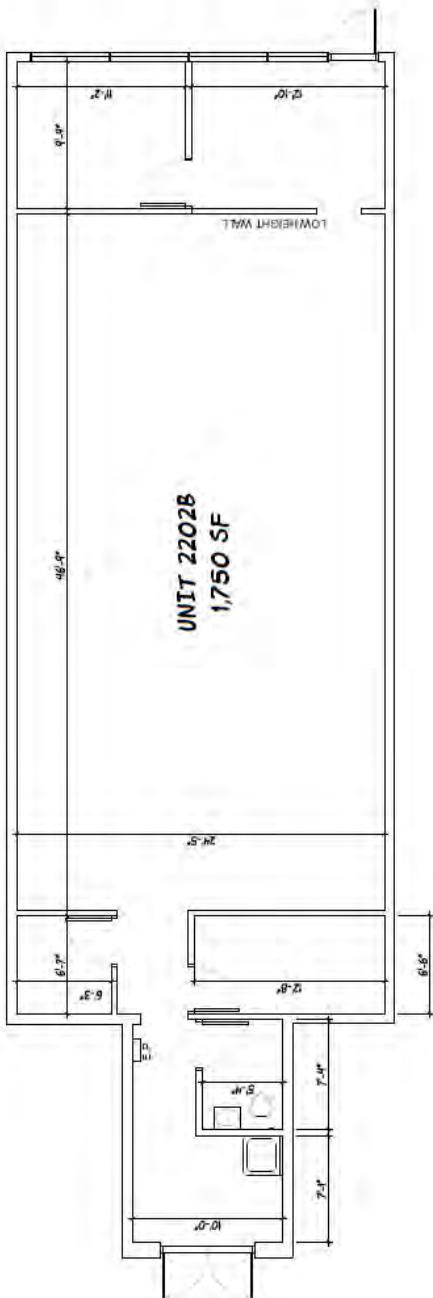
Unit #2202 - 3,500 sq.ft.



Brad Belden
Senior Vice President
847 698 8232
Brad.Belden@colliers.com

Chris Irwin
Senior Vice President
847 698 8193
Chris.Irwin@Colliers.com

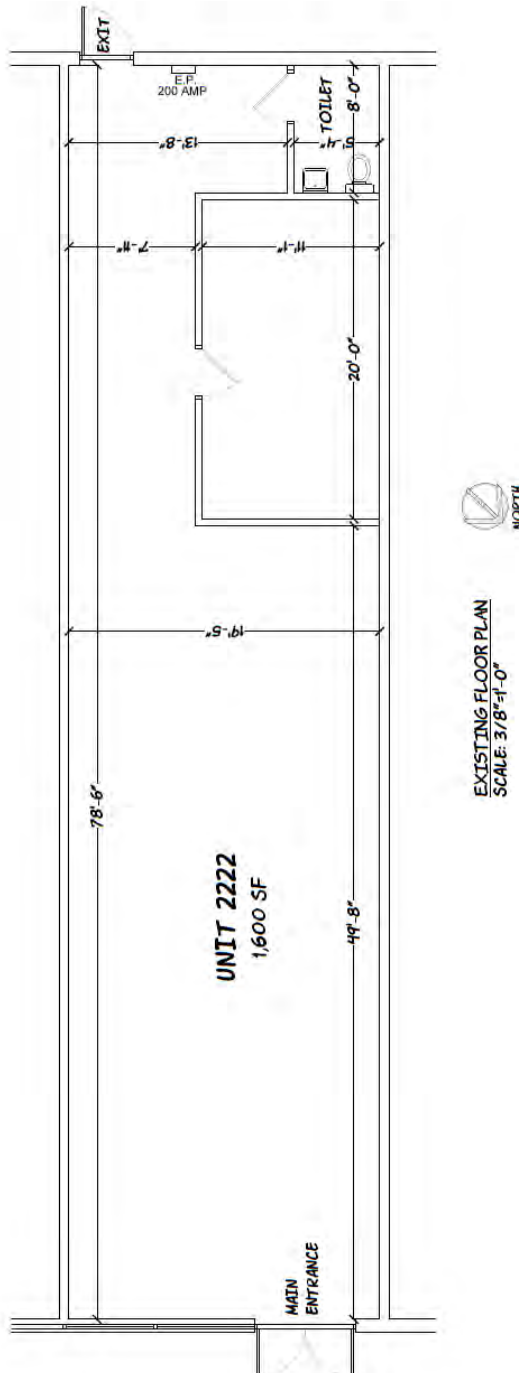
Unit #2202 B - 3,500 sq.ft.



Brad Belden
Senior Vice President
847 698 8232
Brad.Belden@colliers.com

Chris Irwin
Senior Vice President
847 698 8193
Chris.Irwin@Colliers.com

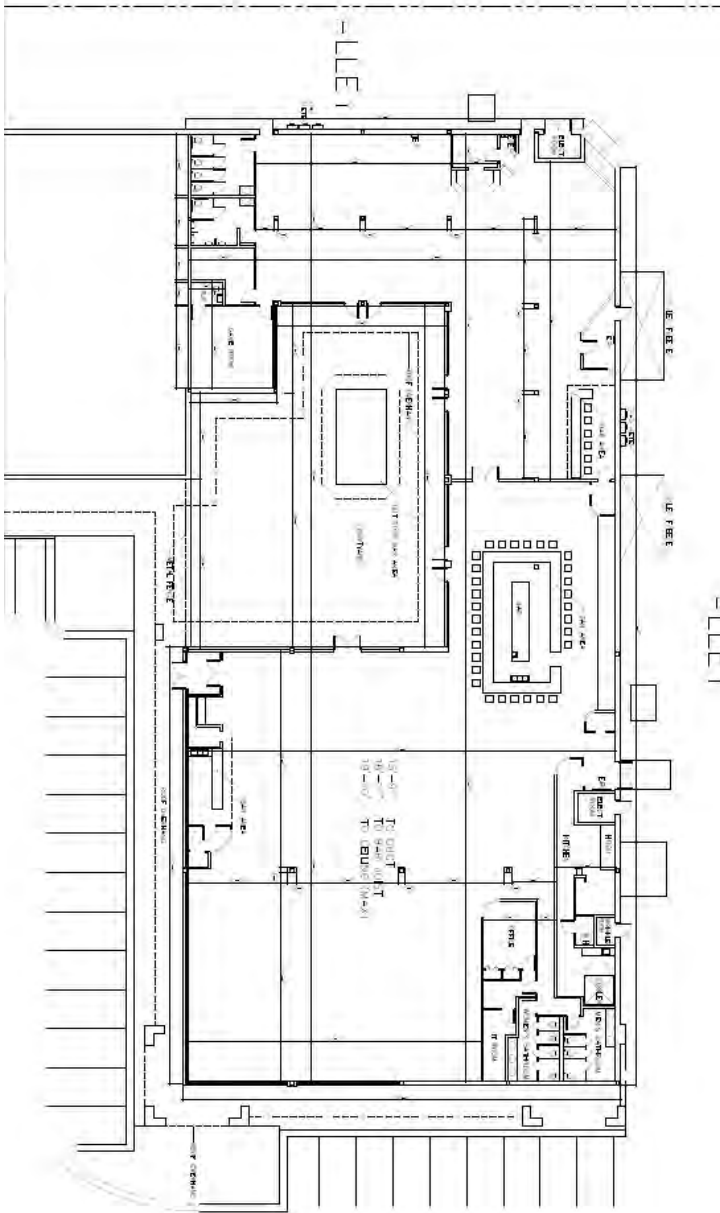
Unit #2222 - 1,600 sq. ft.



Brad Belden
Senior Vice President
847 698 8232
Brad.Belden@colliers.com

Chris Irwin
Senior Vice President
847 698 8193
Chris.Irwin@Colliers.com

Unit #2240 - 17,564 sq.ft.



-BAR
AD, GLENDALE HEIGHTS, IL 60139

RMS Properties



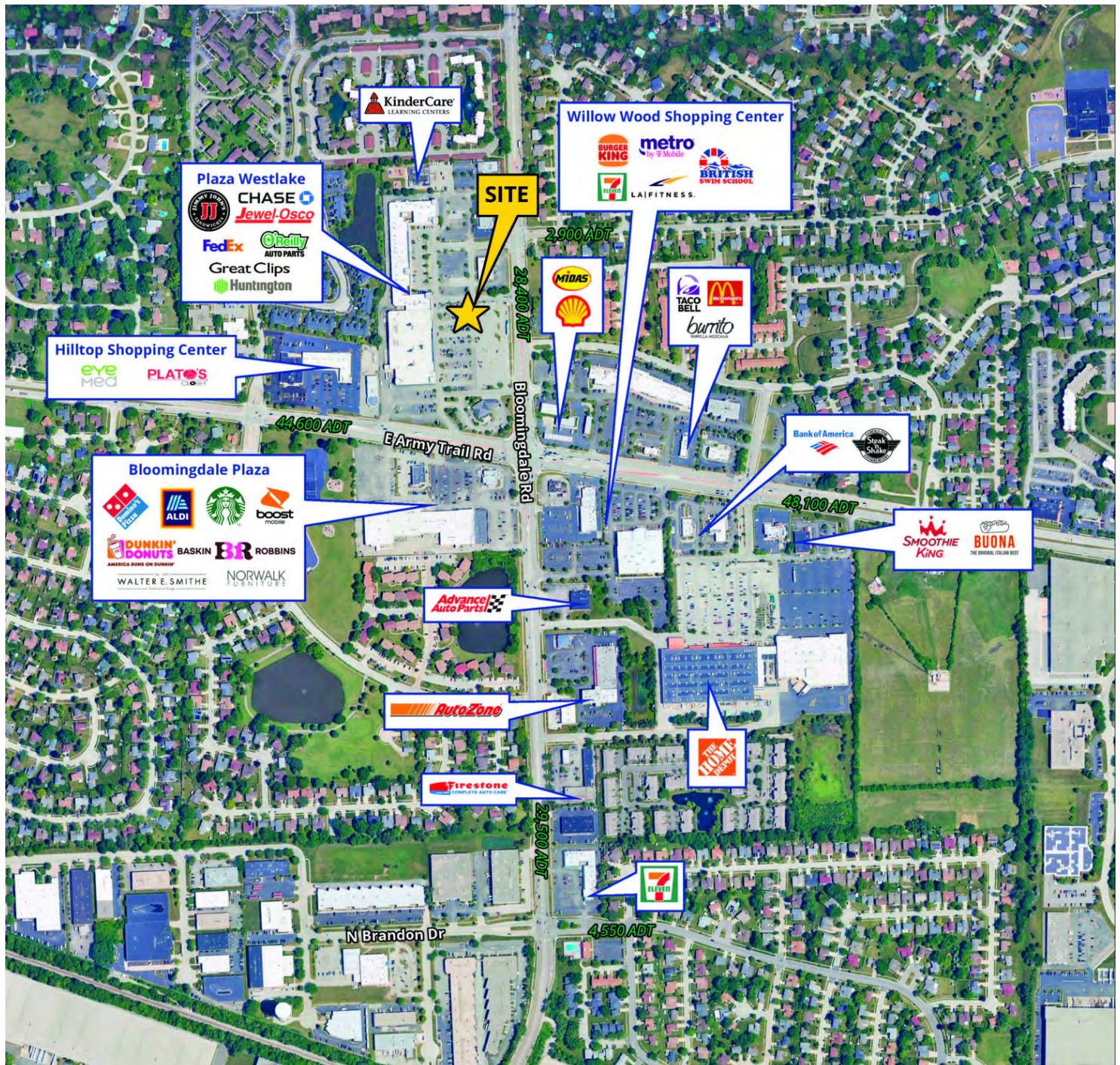
Brad Belden
Senior Vice President
847 698 8232
Brad.Belden@colliers.com

Chris Irwin
Senior Vice President
847 698 8193
Chris.Irwin@Colliers.com

colliers.com/chicago



Area Tenants



Brad Belden
Senior Vice President
847 698 8232
Brad.Belden@colliers.com

Chris Irwin
Senior Vice President
847 698 8193
Chris.Irwin@Colliers.com

This is a satellite map of the Chicago metropolitan area. A red location pin is placed in the city of Schaumburg, which is highlighted with a red square. The map shows a dense network of roads and highways. Major highways labeled include I-90, I-55, I-88, I-290, I-294, I-355, I-57, I-80, I-6, and I-52. Numerous cities and towns are labeled, including Woodstock, Crystal Lake, Elgin, St. Charles, Aurora, Naperville, Oswego, Plainfield, Joliet, Minooka, Morris, Pleasant Prairie, Waukegan, Northbrook, Arlington Heights, Glenview, Evanston, Rosemont, Des Plaines, Lombard, Oak Park, Oak Brook, Bolingbrook, Oak Lawn, Orland Park, Tinley Park, and Frankfort. The Google logo is in the bottom left corner, and the text "Map data ©2024 Imagery ©2024 TerraMetrics" is at the bottom center.



Demographics	1 Mile	3 Miles	5 Miles
Total population	16,558	95,668	268,156
Median age	36.8	38.9	39.9
Median age (Male)	35.0	38.0	38.6
Median age (Female)	40.0	39.9	41.2
Total households	6,037	36,368	99,333
Total persons per HH	2.7	2.6	2.7
Average house value	\$226,169	\$247,598	\$289,554

Chris Irwin
Senior Vice President
847 698 8193
Chris.Irwin@Colliers.com

[illegible]

* Demographic data derived from 2020 ACS - US Census

