



5257 BELL COURT

CHINO, CALIFORNIA 91710

OFFERING SUMMARY

Lease Rate:	\$2.05 PSF G
CAM:	\$375/month
Available SF:	6,350 SF
Lot Size:	0.3 Acres

Property Highlights

- Freestanding 6,350 SF warehouse
- 4 exterior covered docks and a private yard
- +/- 3,816 square feet of cooler space which can be removed
- +/- 1,500 square feet of office area
- 400 Amps power
- 14' minimum warehouse clearance
- Prime Chino location
- RARE food storage building

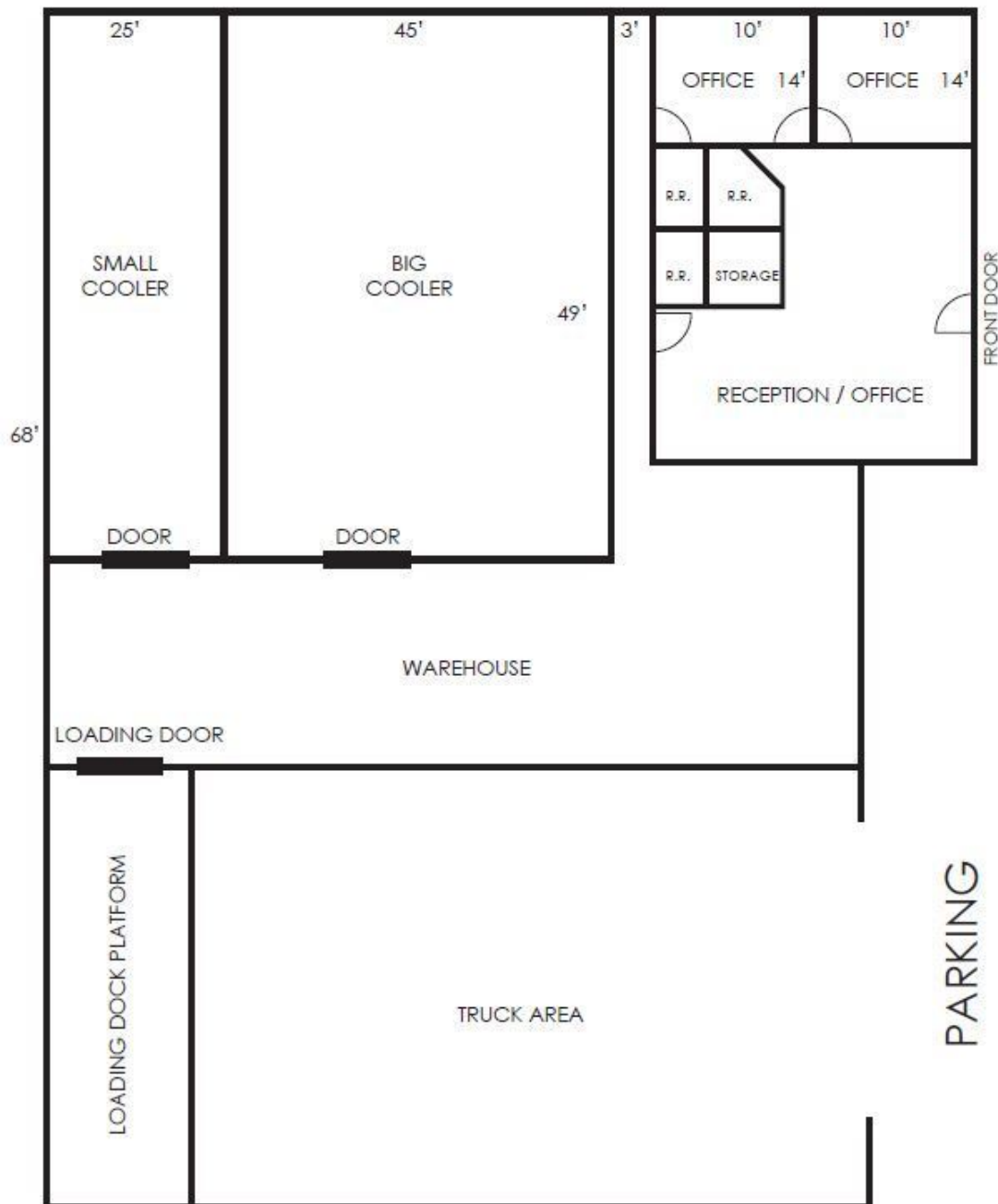
Nicholas Chang, CCIM, SIOR

Executive Vice President
909.243.7614
nchang@naicapital.com
CA DRE #01344844

Richard Lee, SIOR

Executive Vice President
909.243.7601
rlee@naicapital.com
CA DRE #01757870

No warranty, express or implied, is made as to the accuracy of the information contained herein. This information is submitted subject to errors, omissions, change of price, rental or other conditions, withdrawal without notice, and is subject to any special listing conditions imposed by our principals. Cooperating brokers, buyers, tenants and other parties who receive this document should not rely on it, but should use it as a starting point of analysis, and should independently confirm the accuracy of the information contained herein through a due diligence review of the books, records, files and documents that constitute reliable sources of the information described herein. Logos are for identification purposes only and may be trademarks of their respective companies. NAI Capital Commercial, Inc. CAL DRE Lic. #02130474



Nicholas Chang, CCIM, SIOR

Executive Vice President

909.243.7614

nchang@naicapital.com

CA DRE #01344844

Richard Lee, SIOR

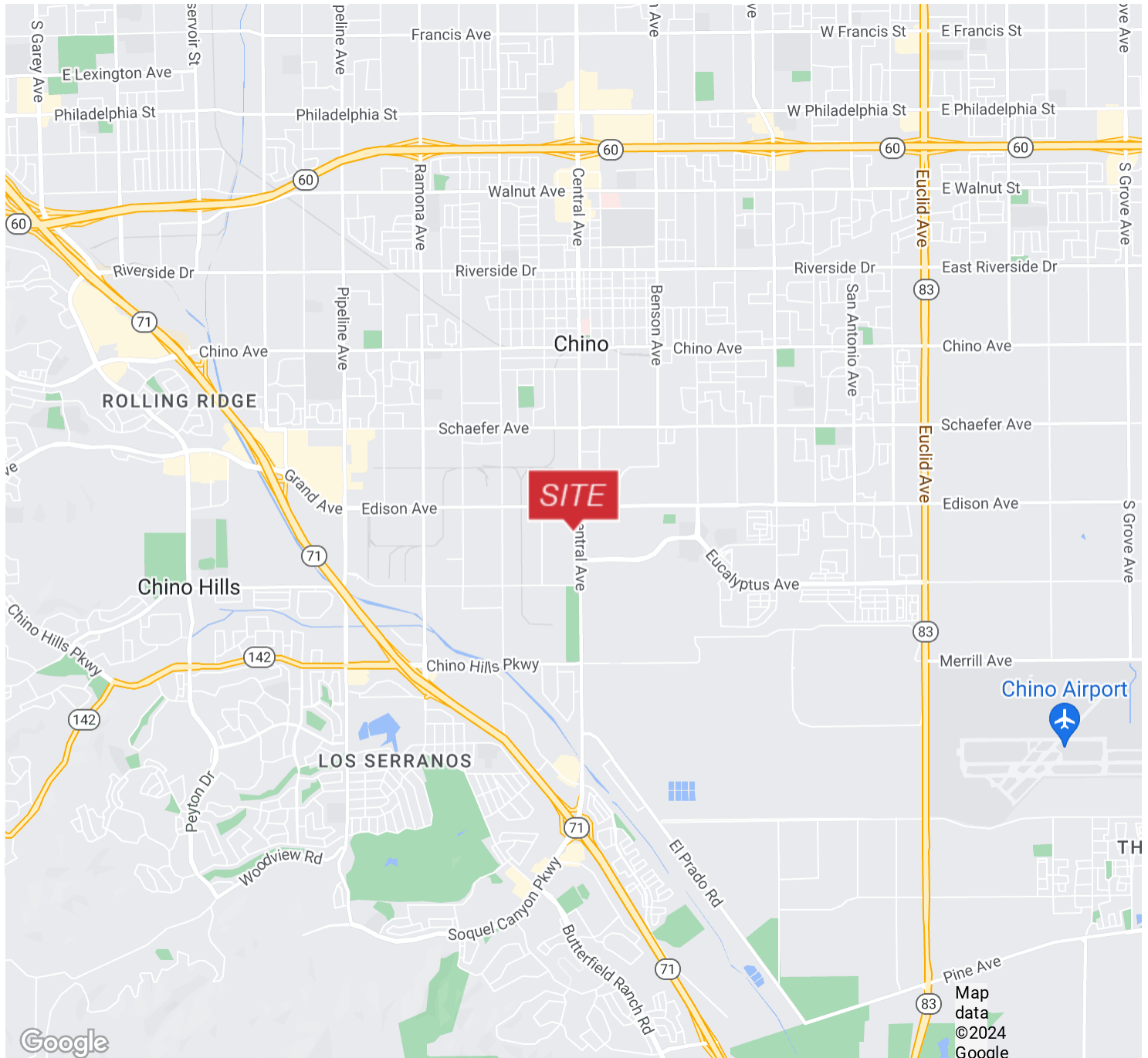
Executive Vice President

909.243.7601

rlee@naicapital.com

CA DRE #01757870

No warranty, express or implied, is made as to the accuracy of the information contained herein. This information is submitted subject to errors, omissions, change of price, rental or other conditions, withdrawal without notice, and is subject to any special listing conditions imposed by our principals. Cooperating brokers, buyers, tenants and other parties who receive this document should not rely on it, but should use it as a starting point of analysis, and should independently confirm the accuracy of the information contained herein through a due diligence review of the books, records, files and documents that constitute reliable sources of the information described herein. Logos are for identification purposes only and may be trademarks of their respective companies. NAI Capital Commercial, Inc. CAL DRE Lic. #02130474



Nicholas Chang, CCIM, SIOR

Executive Vice President

909.243.7614

nchang@naicapital.com

CA DRE #01344844

Richard Lee, SIOR

Executive Vice President

909.243.7601

rlee@naicapital.com

CA DRE #01757870

No warranty, express or implied, is made as to the accuracy of the information contained herein. This information is submitted subject to errors, omissions, change of price, rental or other conditions, withdrawal without notice, and is subject to any special listing conditions imposed by our principals. Cooperating brokers, buyers, tenants and other parties who receive this document should not rely on it, but should use it as a starting point of analysis, and should independently confirm the accuracy of the information contained herein through a due diligence review of the books, records, files and documents that constitute reliable sources of the information described herein. Logos are for identification purposes only and may be trademarks of their respective companies. NAI Capital Commercial, Inc. CAL DRE Lic. #02130474