

28381 DAVIS PARKWAY | SUITE 701  
WARRENVILLE, IL

**SUITE 701 | 3,072 SF**  
28381 DAVIS PKWY \ WARRENVILLE, IL



**VERSA**  
REAL ESTATE SERVICES





## OFFERING SUMMARY

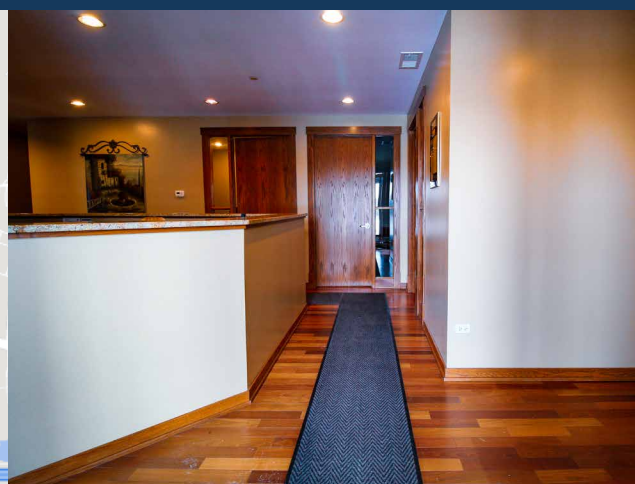
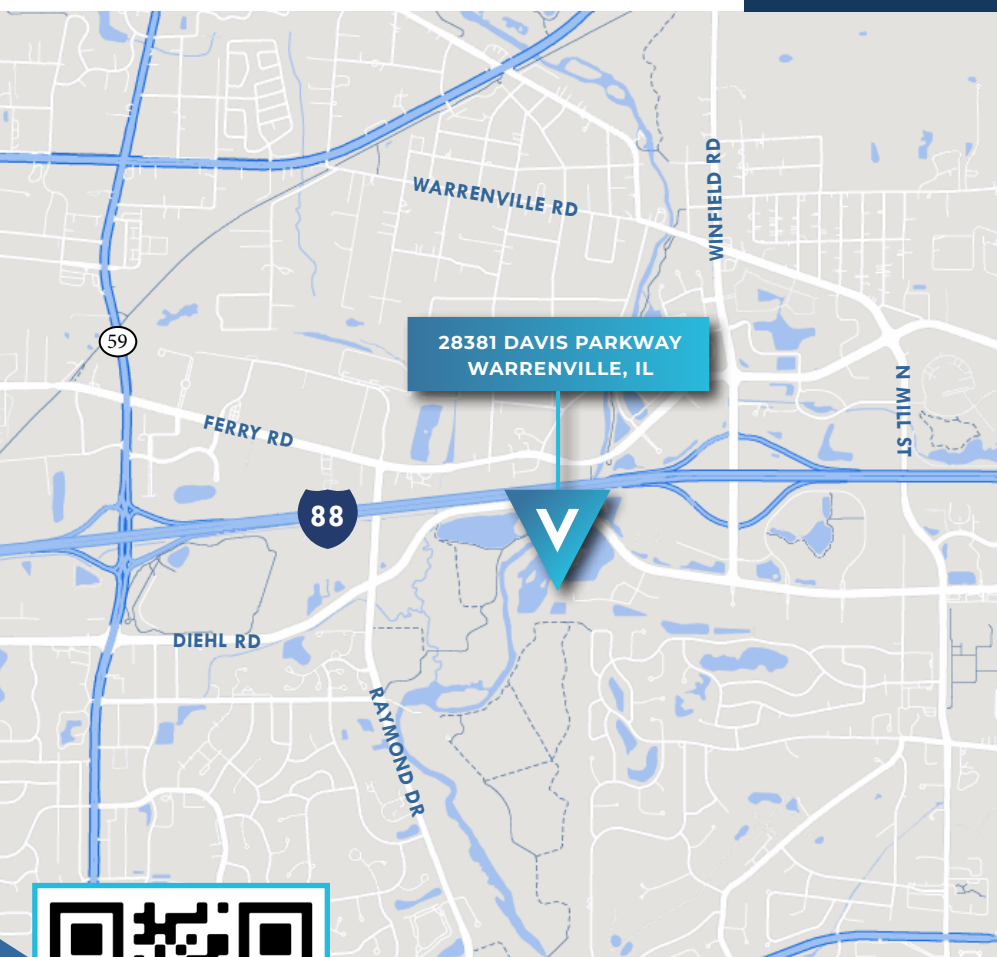
LEASE RATE	\$18.00 PSF MG
AVAILABLE SF	10,323 SF
BUILDING SF	3,072 SF
YEAR BUILT	2006
EXPIRATION DATE	5/31/27

## BUILDING HIGHLIGHTS

- ▶ Kitchen with break area
- ▶ Large conference room
- ▶ Spacious two floor suite
- ▶ High end finishes

## AREA AMENITIES

- ▶ Major interstates and roadways nearby the building
- ▶ Numerous fast serve and fine dining restaurants in close proximity
- ▶ Low Dupage County taxes



**TOBY GARDNER**  
ASSOCIATE  
630.480.6017  
TGardner@VersaRES.com

**RYAN MOEN, SIOR**  
PRINCIPAL  
630.480.6346  
RMoen@VersaRES.com

**VERSA**  
REAL ESTATE SERVICES