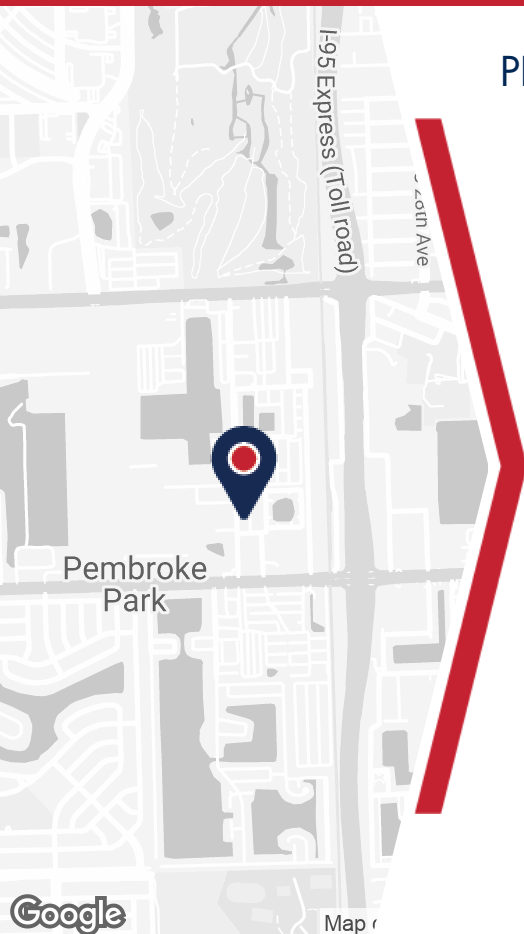


2641 SOUTH PARK ROAD

5,000 SF WAREHOUSE FOR SALE



PROPERTY DETAILS

- 5,000 SF of rentable space
- Demised into 2 spaces at 2,500 sf each
- Ideal for owner/user, investor, or combination
- 16 foot clear
- Recently renovated office
- Overhead doors on both sides, providing excellent cross ventilation

ABOUT PROPERTY



PRICE

\$2,000,000



YEAR BUILT

1970



AVAILABLE SF

5,000



PARKING

8 spaces



LOCATION

Hallandale, FL

For more information:

Jordan Beck

954.652.2033 | Jbeck@Bergercommercial.Com
bergercommercial.com

Calder Alfano

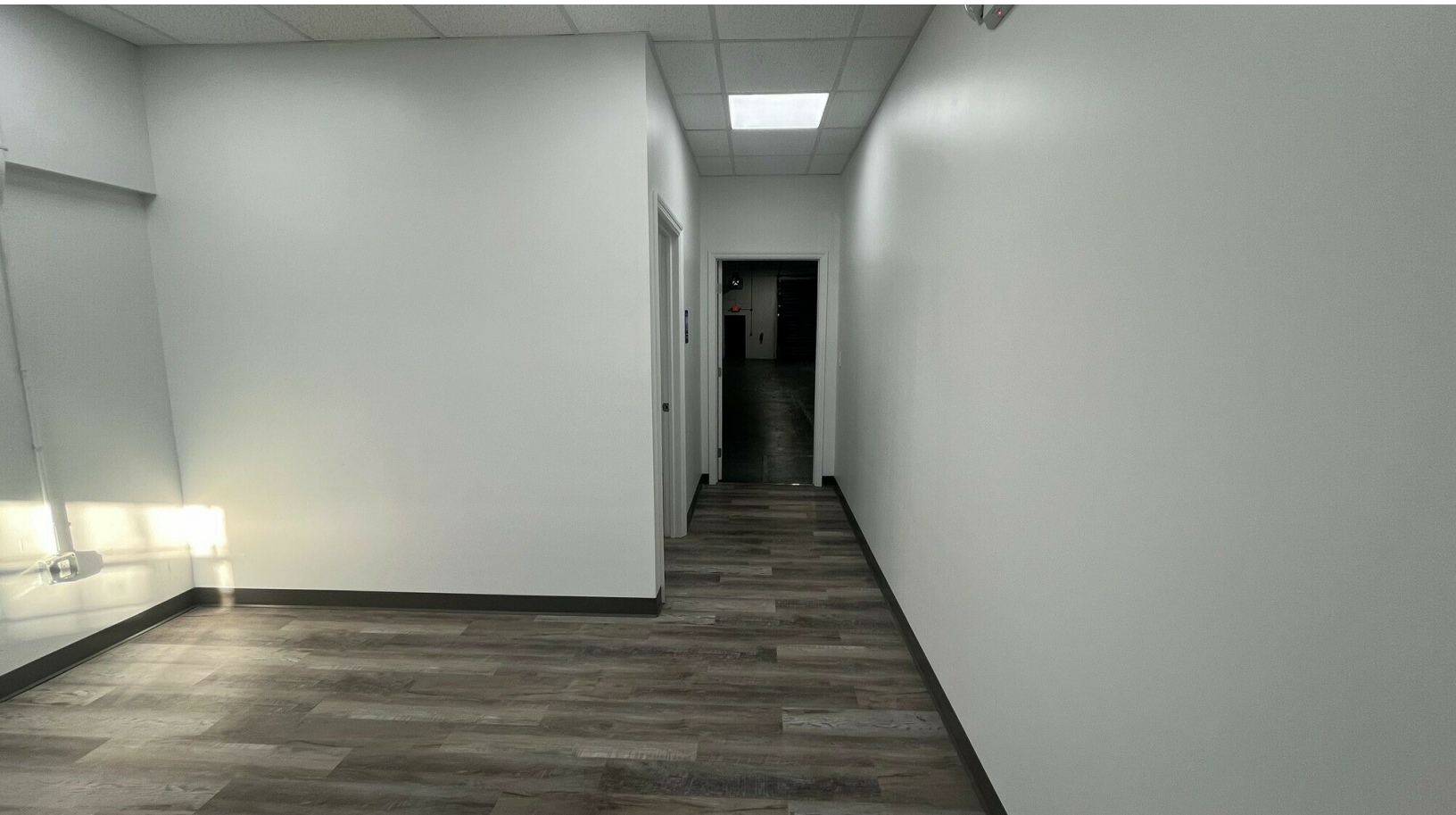
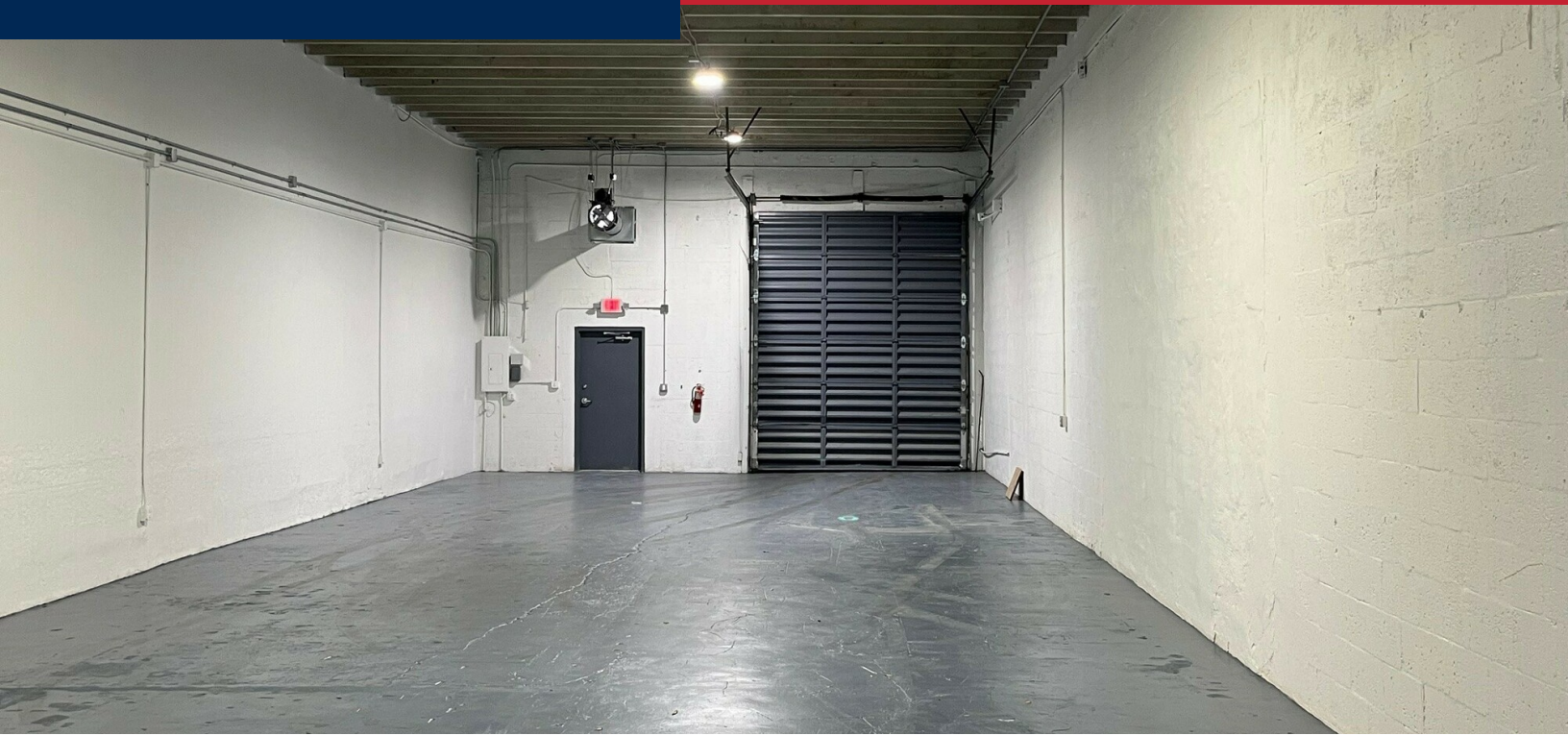
954.652.2041 | Calfano@Bergercommercial.Com



Information furnished regarding this property is from sources deemed reliable, but no warranty or representation as to the accuracy thereof and it is submitted subject to errors, omissions, prior sale, lease or withdrawal without prior notice.

2641 SOUTH PARK ROAD

MAP & PHOTOS



For more information:

Jordan Beck

954.652.2033 | jbeck@Bergercommercial.Com
bergercommercial.com

Calder Alfano

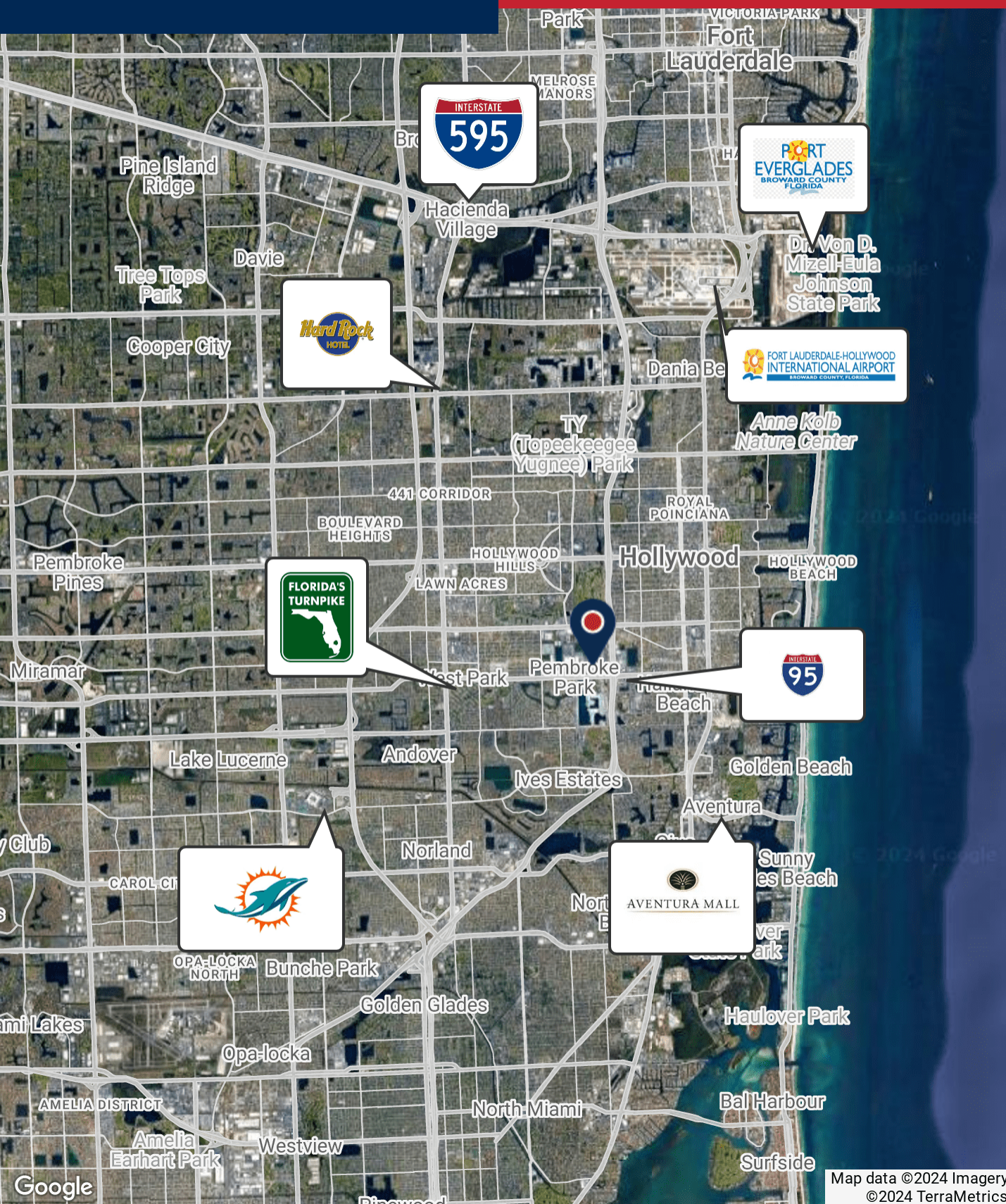
954.652.2041 | Calfano@Bergercommercial.Com



Information furnished regarding this property is from sources deemed reliable, but no warranty or representation as to the accuracy thereof and it is submitted subject to errors, omissions, prior sale, lease or withdrawal without prior notice.

2641 SOUTH PARK ROAD

RETAILER MAP



Map data ©2024 Imagery
©2024 TerraMetrics

For more information:

Jordan Beck

954.652.2033 | Jbeck@Bergercommercial.Com
bergercommercial.com

Calder Alfano

954.652.2041 | Calfano@Bergercommercial.Com

