

FOR SALE

OWNER USER OFFICE CONDO NEAR THE ORANGE CIRCLE

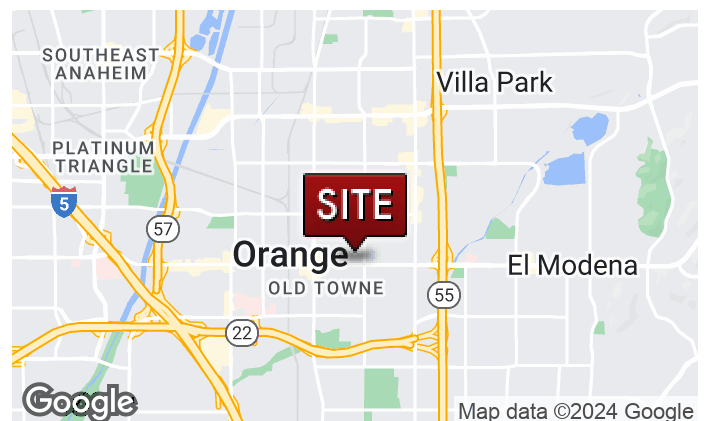
750 E CHAPMAN AVENUE, ORANGE

~1,322 SF



PROPERTY HIGHLIGHTS

- Rare Owner / User Opportunity for a Turnkey Second Floor Office Condo
- Excellent Corner Office - Three Sides of Windows
- Great Location in the Heart of Orange; Adjacent to the Orange Circle
- SBA Loan offers a 10% Down Payment
- Immediate Access to the 55, 57, 22, and 5 freeways
- Abundant Free Surface Parking
- Professionally Managed Office Building
- Call for additional information or to schedule a tour



[CLICK FOR WEBSITE](#)

JAIMESON HEARNE

Principal
714.564.7146
jhearne@lee-associates.com
CalDRE #01925107

MARSHAL VOGT

Principal
714.564.7117
mvogt@lee-associates.com
CalDRE #01519213



COMMERCIAL REAL ESTATE SERVICES

DRE # 01011260
1004 West Taft Avenue, Suite 150
Orange, CA 92865
<https://www.lee-associates.com/orange/>

All information contained herein has been provided by Seller and/or third parties, but has not been independently verified by Lee & Associates or its agent(s). Buyer and interested parties should independently verify all information communicated by these sources.

FOR SALE

OWNER USER OFFICE CONDO NEAR THE ORANGE CIRCLE

750 E CHAPMAN AVENUE, ORANGE

~1,322 SF



[CLICK FOR WEBSITE](#)

JAIMESON HEARNE

Principal
714.564.7146
jhearne@lee-associates.com
CalDRE #01925107

MARSHAL VOGT

Principal
714.564.7117
mvogt@lee-associates.com
CalDRE #01519213



LEE & ASSOCIATES

COMMERCIAL REAL ESTATE SERVICES

DRE # 01011260

1004 West Taft Avenue, Suite 150

Orange, CA 92865

<https://www.lee-associates.com/orange/>

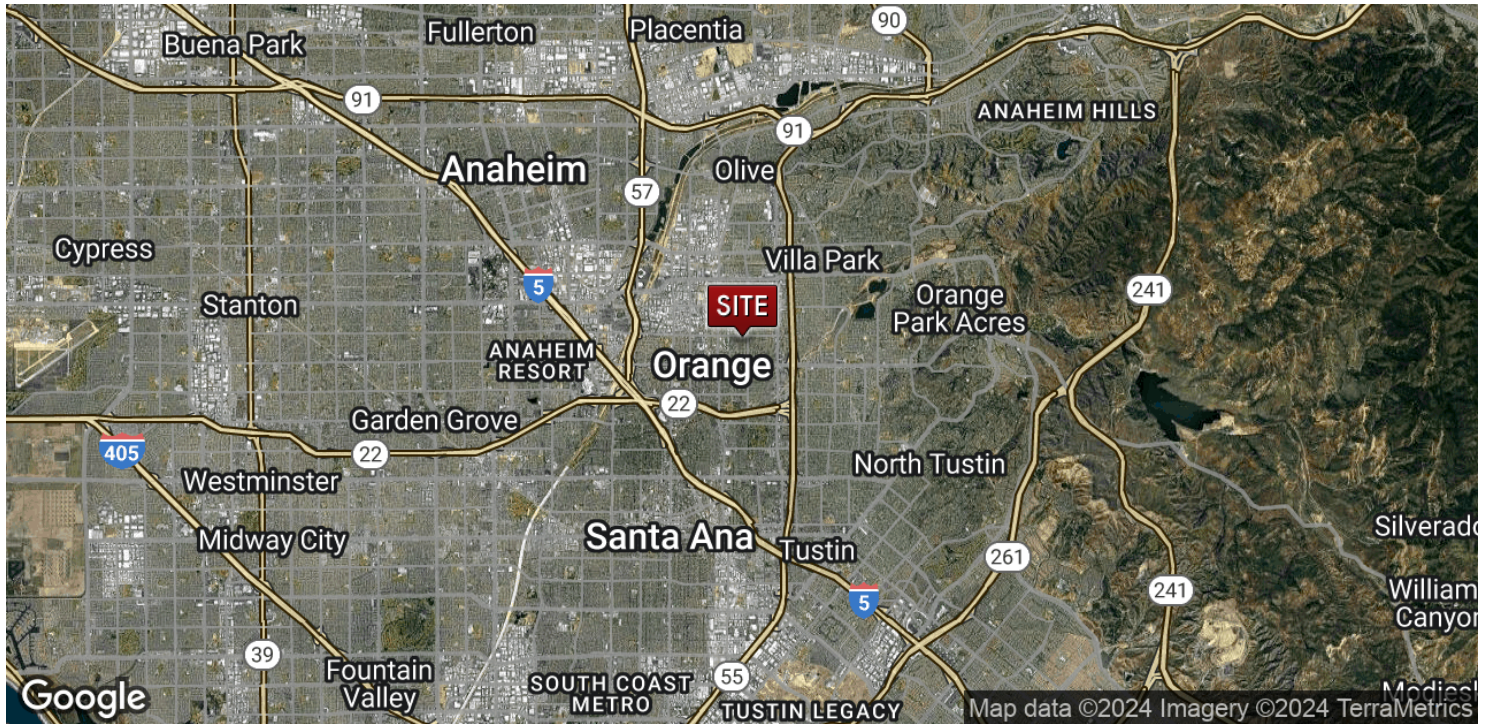
All information contained herein has been provided by Seller and/or third parties, but has not been independently verified by Lee & Associates or its agent(s). Buyer and interested parties should independently verify all information communicated by these sources.

FOR SALE

OWNER USER OFFICE CONDO NEAR THE ORANGE CIRCLE

750 E CHAPMAN AVENUE, ORANGE

~1,322 SF



CLICK FOR WEBSITE

JAIMESON HEARNE

Principal
714.564.7146
jhearne@lee-associates.com
CalDRE #01925107

MARSHAL VOGT

Principal
714.564.7117
mvoigt@lee-associates.com
CalDRE #01519213

LEE & ASSOCIATES

COMMERCIAL REAL ESTATE SERVICES
DRE # 01011260
1004 West Taft Avenue, Suite 150
Orange, CA 92865
<https://www.lee-associates.com/orange/>

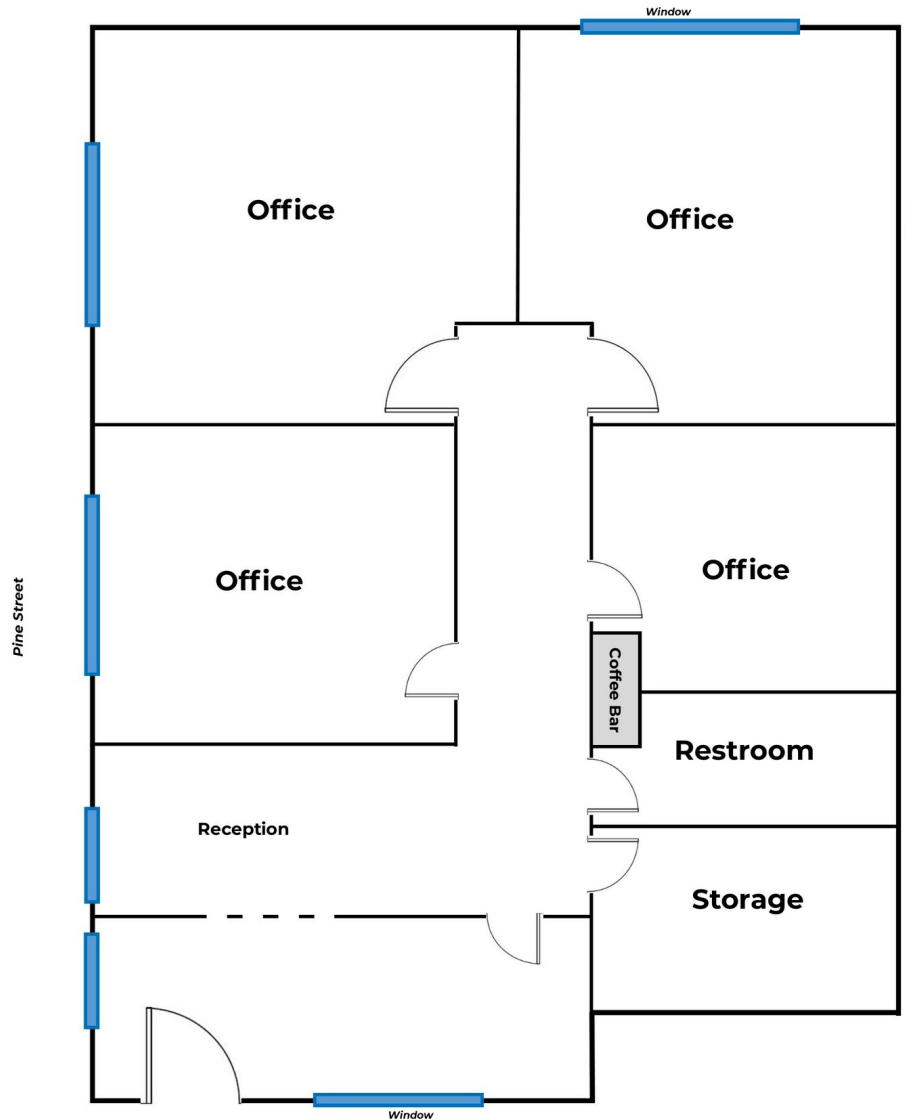
All information contained herein has been provided by Seller and/or third parties, but has not been independently verified by Lee & Associates or its agent(s). Buyer and interested parties should independently verify all information communicated by these sources.

FOR SALE

OWNER USER OFFICE CONDO NEAR THE ORANGE CIRCLE

750 E CHAPMAN AVENUE, ORANGE

~1,322 SF



*NOT TO SCALE

CLICK FOR WEBSITE

JAIMESON HEARNE

Principal
714.564.7146
jhearne@lee-associates.com
CalDRE #01925107

MARSHAL VOGT

Principal
714.564.7117
mvogt@lee-associates.com
CalDRE #01519213



COMMERCIAL REAL ESTATE SERVICES

DRE # 01011260
1004 West Taft Avenue, Suite 150
Orange, CA 92865
<https://www.lee-associates.com/orange/>

All information contained herein has been provided by Seller and/or third parties, but has not been independently verified by Lee & Associates or its agent(s). Buyer and interested parties should independently verify all information communicated by these sources.