



Each office independently owned and operated

FOR LEASE

OFFICE BUILDING

ASHES DRIVE EXECUTIVE SUITES

1015 ASHES DRIVE SUITE 107, WILMINGTON, NC 28405

RE/MAX ESSENTIAL

1650 Military Cutoff Rd | Ste 100

Wilmington, NC 28403

910.616.2123

BEACHTOWNBROKERS.COM



FOR MORE
INFORMATION
CONTACT:

KENNETH FISHER

Broker / REALTOR

910.616.2123

kfisher@beachtownbrokers.com

NC #227264

ASHES DRIVE EXECUTIVE SUITES

1015 ASHES DRIVE SUITE 107, WILMINGTON, NC 28405



OFFERING SUMMARY

Lease Rate:	\$1,000.00 SF/yr (Full Service)
Number of Units:	5
Private Office SF:	144 SF
Suite Size:	5,900 SF
Common Space	3,700 SF

PROPERTY DESCRIPTION

3 Executive Suites Available. Each suite is furnished and utilities are included. \$1000/month. Tenants have access to expansive common areas including a conference room, co-working space, reception area, and a kitchen. Our private executive office suites are furnished, ensuring you can start your operations immediately without the hassle of setting up. Emphasizing on flexibility, we offer a range of lease terms tailored to meet your unique business needs, whether you're a start-up or an established corporation.

This ground floor suite provides over 3,700 square feet of shared space, designed to foster collaboration and networking among professionals. The building's architecture and interior design exude a professional atmosphere, ideal for businesses aiming to make a strong impression.

Strategically located just minutes from Mayfaire Center, Wilmington's premier shopping and dining destination, this location offers unparalleled convenience for both your team and clients. Moreover, being just 10 minutes away from the airport adds a layer of accessibility, especially for businesses with frequent travel needs or expecting out-of-town clients.

Our full-service offering ensures all utilities and amenities are included, so you can focus on what you do best – growing your business. The blend of luxury, location, and flexibility makes this an unmatched leasing opportunity in Wilmington. Let's discuss how this space can be the launchpad for your business's next phase of growth.

DEMOGRAPHICS	1 MILE	2 MILES	3 MILES
Total Households	2,412	9,245	22,290
Total Population	4,404	17,993	47,235
Average HH Income	\$113,749	\$102,190	\$82,981



ESSENTIAL

Each office independently owned and operated

KENNETH FISHER

Broker / REALTOR

910.616.2123

kfisher@beachtownbrokers.com

NC #227264

1650 Military Cutoff Rd | Ste 100
Wilmington, NC 28403

910.616.2123

BEACHTOWNBROKERS.COM

FOR LEASE

OFFICE BUILDING

LEASE SPACES

ASHES DRIVE EXECUTIVE SUITES

1015 ASHES DRIVE SUITE 107, WILMINGTON, NC 28405

LEASE INFORMATION

Lease Type:	Full Service	Lease Term:	Negotiable
Total Space:	144 SF	Lease Rate:	\$1,000.00 SF/yr

AVAILABLE SPACES

SUITE	SIZE (SF)	LEASE TYPE	LEASE RATE	DESCRIPTION
Suite C	144 SF	Full Service	\$1,000.00 SF/yr	Private office space, motorized adjustable desk, access to shared common workspace, kitchenette, conference room, and reception area. All hour access to space via a key fob. Individually locked office space. Full service lease.
Suite D	144 SF	Full Service	\$1,000.00 SF/yr	Private office space with large window, motorized adjustable desk, access to shared common workspace, kitchenette, conference room, and reception area. All hour access to space via a key fob. Individually locked office space. Full service lease.
Suite E	144 SF	Full Service	\$1,000.00 SF/yr	Private office space with large window, motorized adjustable desk, access to shared common workspace, kitchenette, conference room, and reception area. All hour access to space via a key fob. Individually locked office space. Full service lease.

**ESSENTIAL**

Each office independently owned and operated

KENNETH FISHER

Broker / REALTOR

910.616.2123

kfisher@beachtownbrokers.com

NC #227264

1650 Military Cutoff Rd | Ste 100
Wilmington, NC 28403

910.616.2123

BEACHTOWNBROKERS.COM

All information contained herein is deemed reliable but not guaranteed. Each office independently owned and operated

FOR LEASE

EXECUTIVE SUITES

OFFICE SUITES

ASHES DRIVE EXECUTIVE SUITES

1015 ASHES DRIVE SUITE 107, WILMINGTON, NC 28405



RE/MAX
COMMERCIAL®

ESSENTIAL

Each office independently owned and operated

1650 Military Cutoff Rd | Ste 100
Wilmington, NC 28403

910.616.2123

KENNETH FISHER
Broker / REALTOR
910.616.2123
kfisher@beachtownbrokers.com
NC #227264

BEACHTOWNBROKERS.COM

All information contained herein is deemed reliable but not guaranteed. Each office independently owned and operated

FOR LEASE

COMMON AREAS

ASHES DRIVE EXECUTIVE SUITES

1015 ASHES DRIVE SUITE 107, WILMINGTON, NC 28405



RE/MAX
COMMERCIAL®

ESSENTIAL

Each office independently owned and operated

KENNETH FISHER

Broker / REALTOR

910.616.2123

kfisher@beachtownbrokers.com

NC #227264

BEACHTOWNBROKERS.COM

1650 Military Cutoff Rd | Ste 100
Wilmington, NC 28403

910.616.2123

All information contained herein is deemed reliable but not guaranteed. Each office independently owned and operated

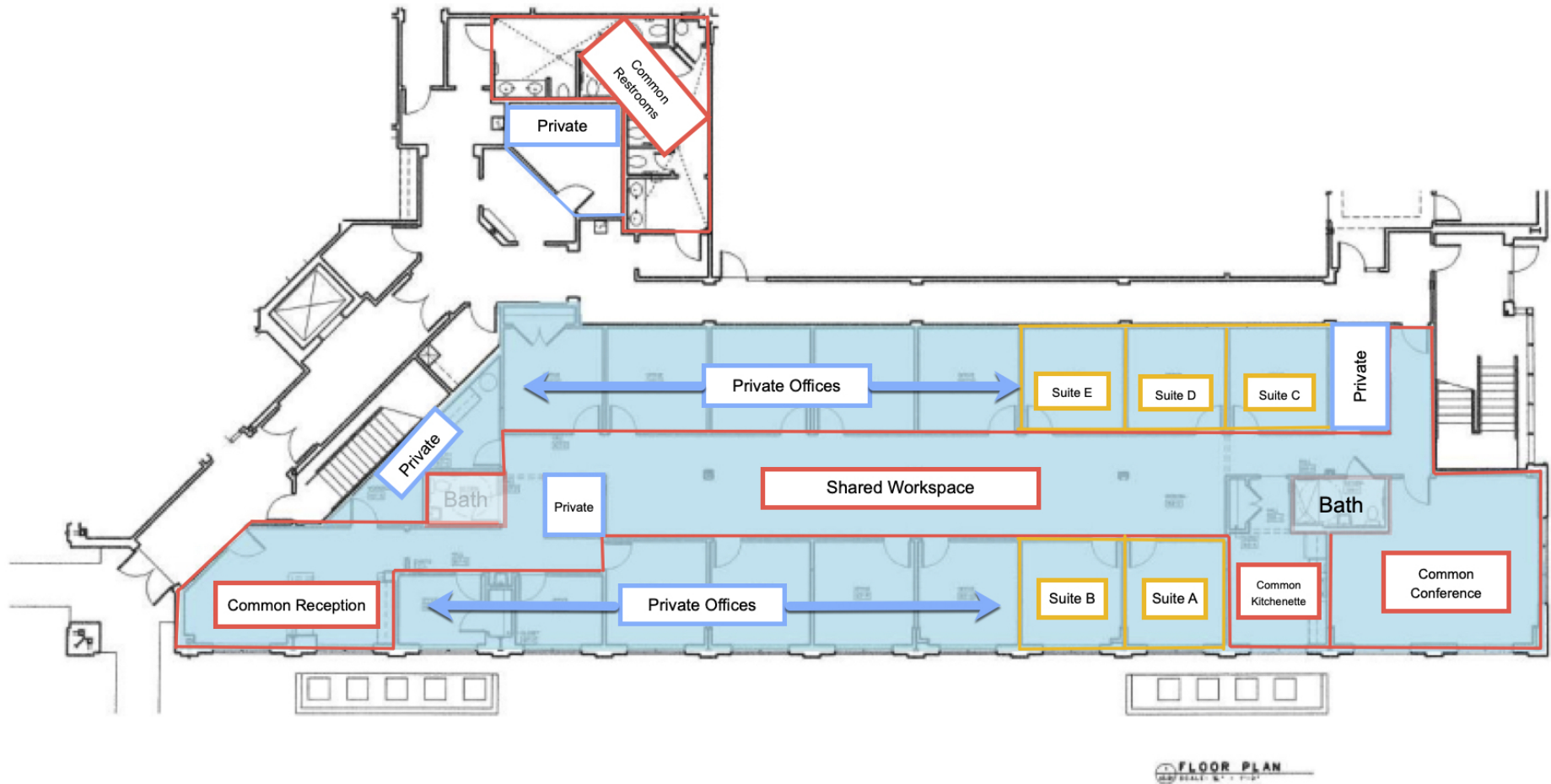
FOR LEASE

OFFICE BUILDING

FLOOR PLAN

ASHES DRIVE EXECUTIVE SUITES

1015 ASHES DRIVE SUITE 107, WILMINGTON, NC 28405



RE/MAX
COMMERCIAL®

ESSENTIAL

Each office independently owned and operated

KENNETH FISHER

Broker / REALTOR

910.616.2123

kfisher@beachtownbrokers.com

NC #227264

1650 Military Cutoff Rd | Ste 100
Wilmington, NC 28403

910.616.2123

BEACHTOWNBROKERS.COM

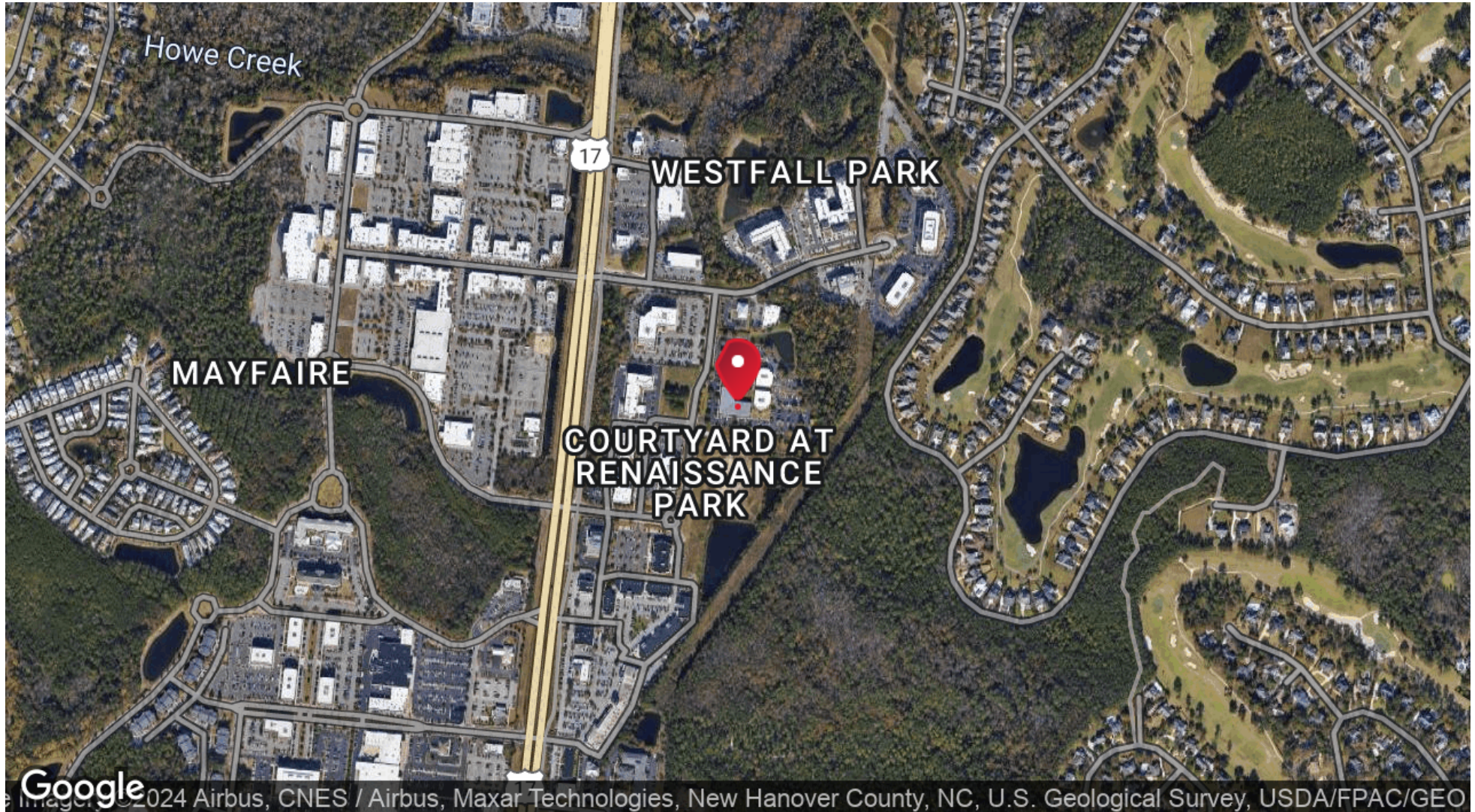
All information contained herein is deemed reliable but not guaranteed. Each office independently owned and operated

FOR LEASE

LOCATION MAP

ASHES DRIVE EXECUTIVE SUITES

1015 ASHES DRIVE SUITE 107, WILMINGTON, NC 28405



ESSENTIAL

Each office independently owned and operated

KENNETH FISHER

Broker / REALTOR

910.616.2123

kfisher@beachtownbrokers.com

NC #227264

1650 Military Cutoff Rd | Ste 100
Wilmington, NC 28403

910.616.2123

BEACHTOWNBROKERS.COM

All information contained herein is deemed reliable but not guaranteed. Each office independently owned and operated

ASHES DRIVE EXECUTIVE SUITES

1015 ASHES DRIVE SUITE 107, WILMINGTON, NC 28405

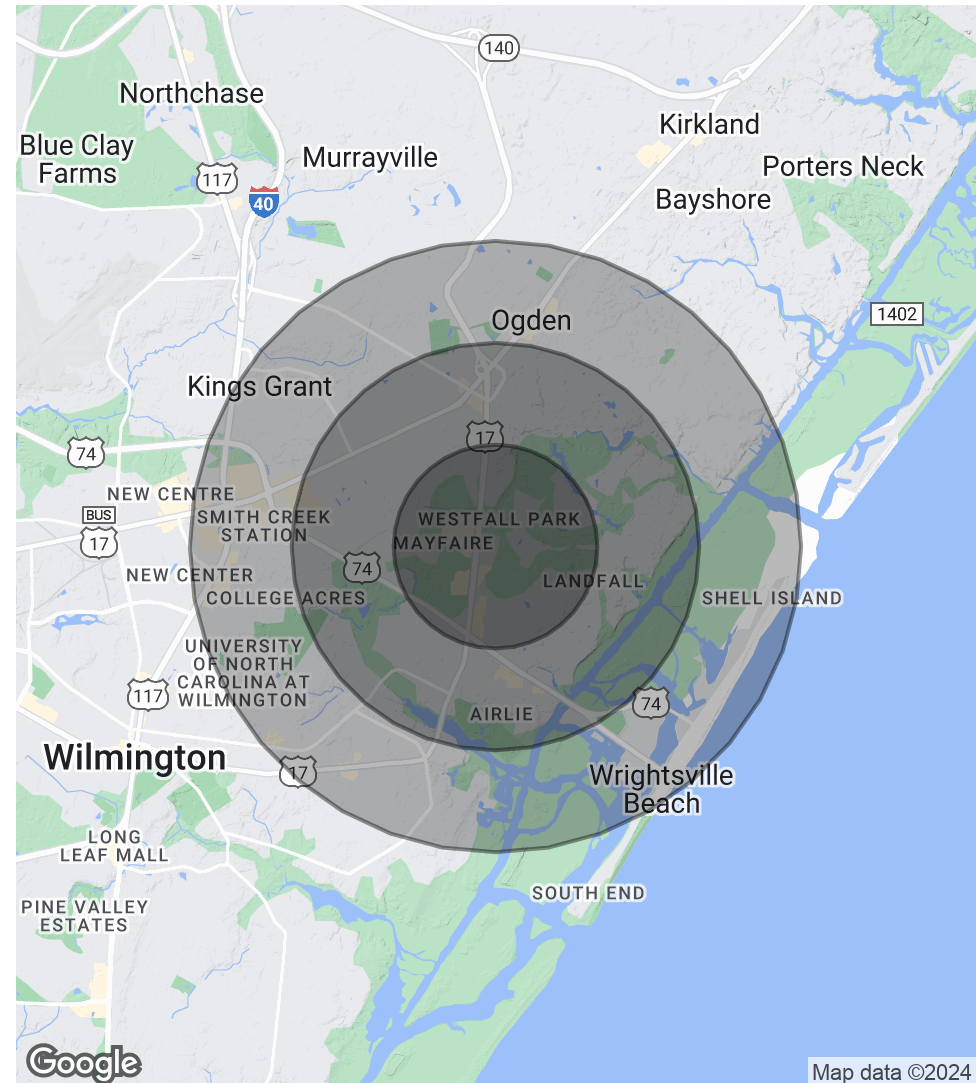
POPULATION

	1 MILE	2 MILES	3 MILES
Total Population	4,404	17,993	47,235
Average Age	57.2	50.9	41.3
Average Age (Male)	56.1	49.5	40.6
Average Age (Female)	58.0	51.6	41.9

HOUSEHOLDS & INCOME

	1 MILE	2 MILES	3 MILES
Total Households	2,412	9,245	22,290
# of Persons per HH	1.8	1.9	2.1
Average HH Income	\$113,749	\$102,190	\$82,981
Average House Value	\$532,902	\$462,756	\$336,794

* Demographic data derived from 2020 ACS - US Census



ESSENTIAL

Each office independently owned and operated

KENNETH FISHER

Broker / REALTOR

910.616.2123

kfisher@beachtownbrokers.com

NC #227264

1650 Military Cutoff Rd | Ste 100
Wilmington, NC 28403

910.616.2123

BEACHTOWNBROKERS.COM

All information contained herein is deemed reliable but not guaranteed. Each office independently owned and operated