



JEWEL BOX SUITE AVAILABLE

**± 1,075 sf Office
suite available**

Camelback Lakes

2850 E Camelback Rd | Suite 315
Phoenix AZ 85018

**Get more
information**

Mark Seale

D 480 423 7909

C 602 828 2325

mark.seale@avisonyoung.com

Nick Slonek

D 415 322 5051

C 415 710 0233

nick.slonek@avisonyoung.com



2710, 2720, 2730 AND 2850 E CAMELBACK RD
PHOENIX, AZ

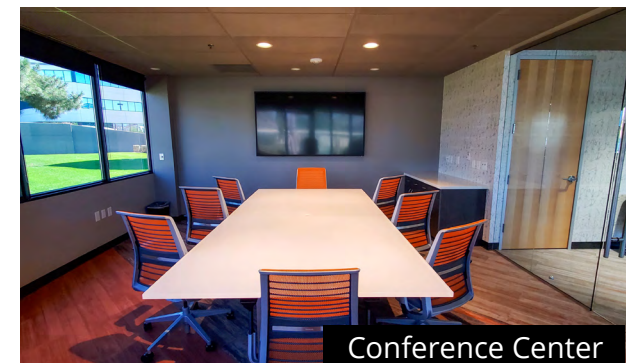
**AVISON
YOUNG**

avisonyoung.com

Property highlights

±1,075 sf office for sublease
2850 E Camelback Rd | Suite 315

- Walking distance to Embassy Suites Hotel, Biltmore Golf Course, Lifetime Fitness, Gratis Coffee Station, and Common Area Lounge
- 3 minutes to Piestewa Peak Parkway, and 12 minutes to Sky Harbor Airport
- Within 5 minutes, over 100 eating establishments
- Abundant covered and surface parking
- Updated lobbies and restrooms
- Located in affluent Phoenix area



Small executive office space

±1,075 sf office for sublease
2850 E Camelback Rd | Suite 315

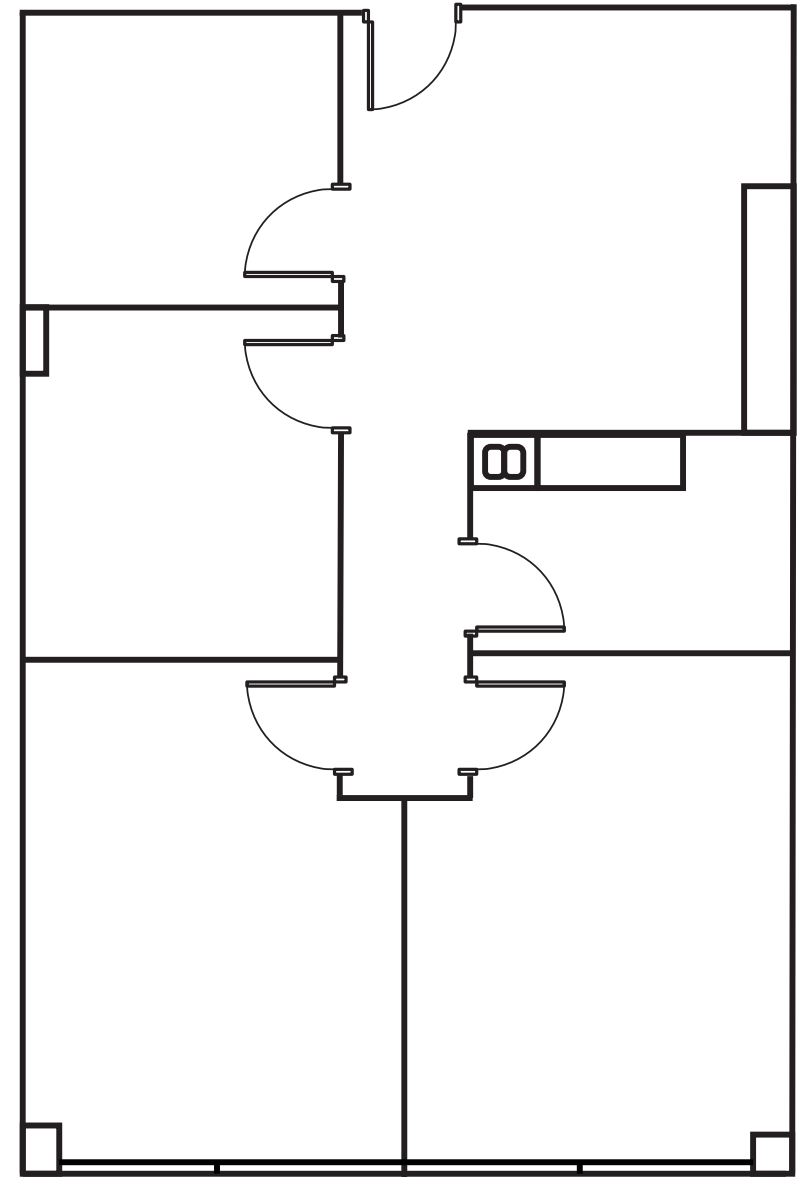
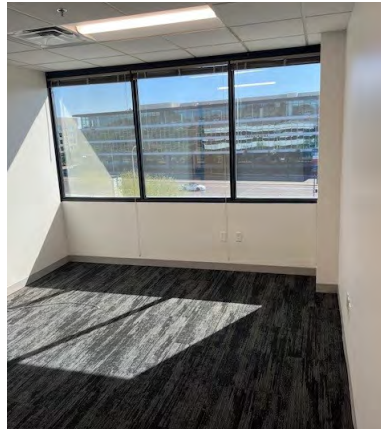
Suite 315

±1,075 sf

- Located on 3rd Floor
- 4 offices (2 exterior), multi-purpose room, and reception area
- On-site management
- On-site tenant amenity lounge, training room and outdoor seating
- Frontage and traffic light access to Camelback Rd

Offering summary

| | |
|----------------------|--|
| Term | Thru October 31, 2030 |
| Lease rate | \$38.00/sf, Full Service |
| Year built/renovated | 1982/2021 |
| Annual increase | 3% |
| Building size | ±116,851 sf |
| Parking | 4.5/1,000 sf Abundant surface parking and garage parking available at \$65/ month per space |



Location

±1,075 sf office for sublease
2850 E Camelback Rd | Suite 315



Contact us

Mark Seale

D 480 423 7909

C 602 828 2325

mark.seale@avisonyoung.com

Nick Slonek

D 415 322 5051

C 415 710 0233

nick.slonek@avisonyoung.com



Visit us online
avisonyoung.com

© 2024 Avison Young - Arizona, Ltd. All rights reserved.

E. & O.E.: The information contained herein was obtained from sources which we deem reliable and, while thought to be correct, is not guaranteed by Avison Young.

2720 E Camelback Road | Suite 150 | Phoenix, AZ 85016 | 480 994 8155



2710, 2720, 2730 AND 2850 E CAMELBACK RD
PHOENIX, AZ

**AVISON
YOUNG**