

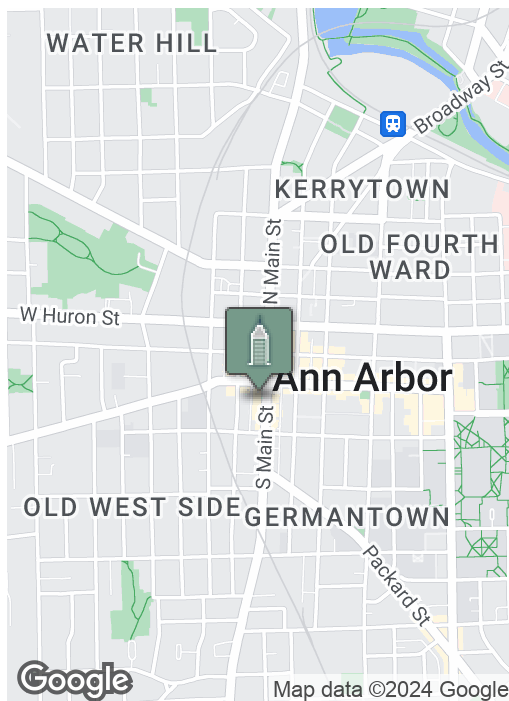
Downtown Office Space

320 SOUTH MAIN, ANN ARBOR, MI 48104



Swisher
COMMERCIAL

FOR LEASE



SUMMARY

Suite C:

1,543 SF
\$22.50 SF/yr
plus utilities

Suite D:

941 SF
\$22.50 SF/yr
plus utilities

Zoning:

D1

PROPERTY HIGHLIGHTS

- 2nd floor loft space with skylights
- Features dramatic open ceiling rafters and brick walls
- Suite C has break area, conference room, phone booth and open areas
- Suite D has kitchenette, private offices, and open areas with skylights
- Entrances to the building in front and back
- Located in the heart of Ann Arbor's Central Business District, restaurant and entertainment area, above Conor O'Neill's Irish Pub
- City parking lot (Kline lot) at rear of building
- Municipal lots, structures and street parking on Main and surrounding streets

***Building
relationships.***

208 East Washington Street Ann Arbor, MI 48104

734.663.0501

Joe Palms, CCIM

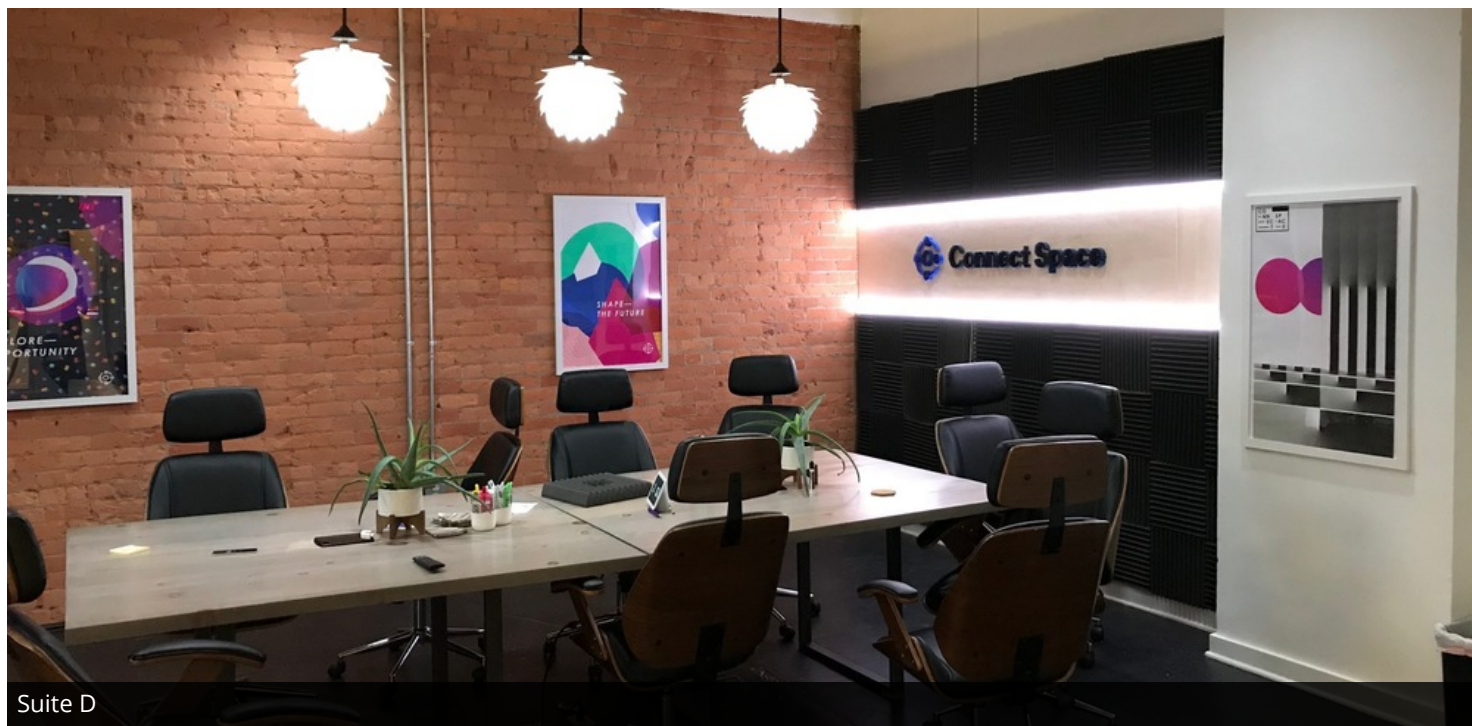
734.662.3676

JPALMS@SWISHERCOMMERCIAL.COM

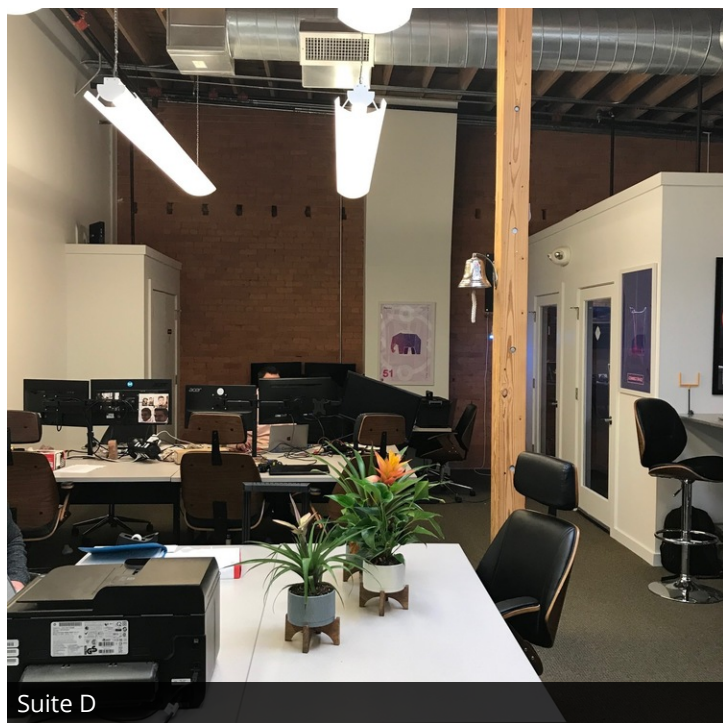
SWISHERCOMMERCIAL.COM

Downtown Office Space for Lease

320 SOUTH MAIN, ANN ARBOR, MI 48104



Suite D



Suite D



Suite D

***Building
relationships.***

208 East Washington Street Ann Arbor, MI 48104

734.663.0501

Joe Palms, CCIM

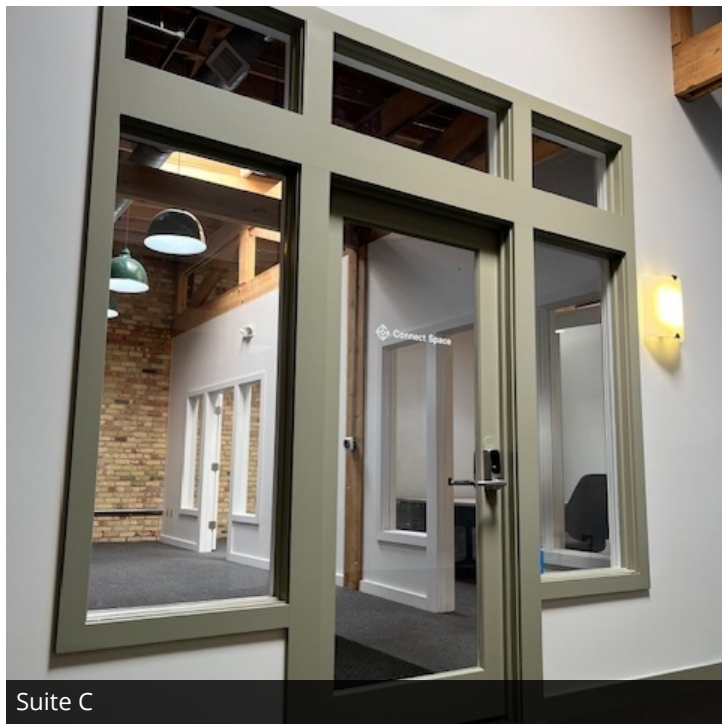
734.662.3676

JPALMS@SWISHERCOMMERCIAL.COM

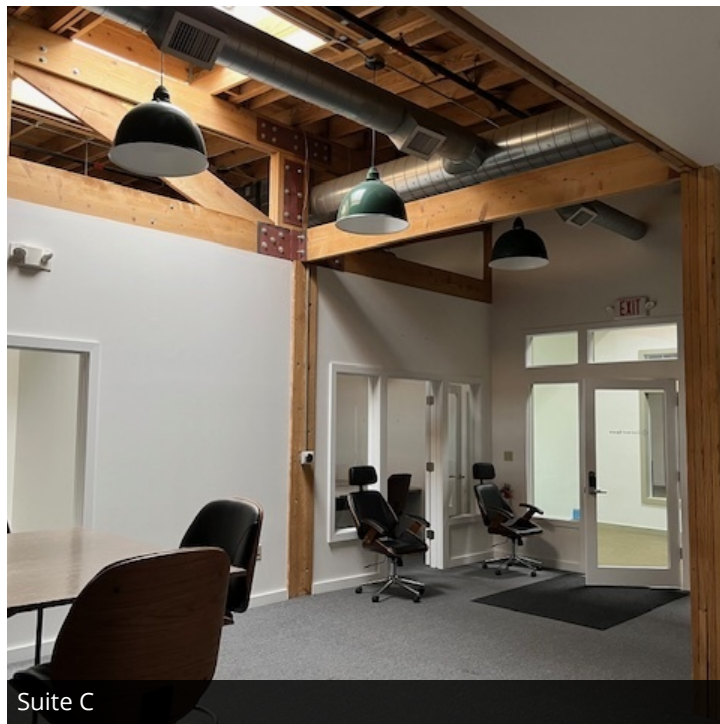
SWISHERCOMMERCIAL.COM

Downtown Office Space for Lease

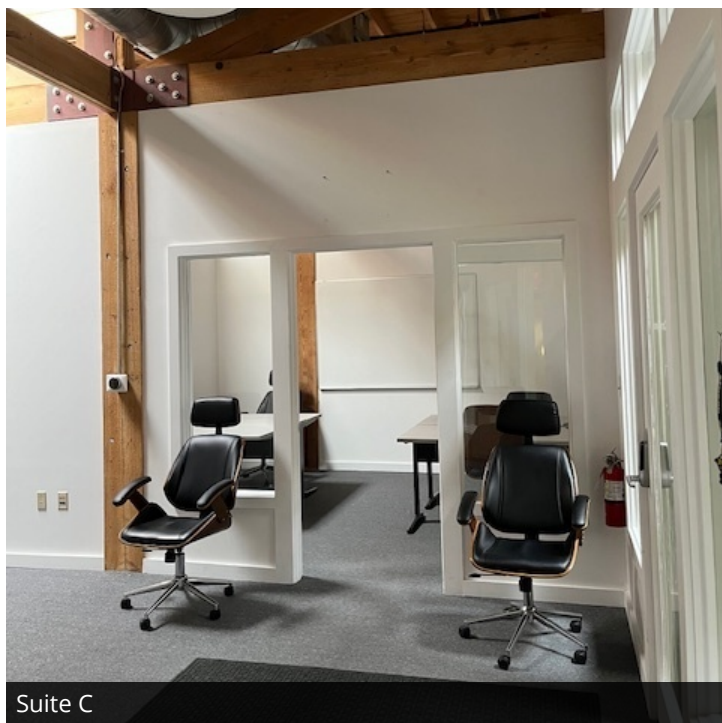
320 SOUTH MAIN, ANN ARBOR, MI 48104



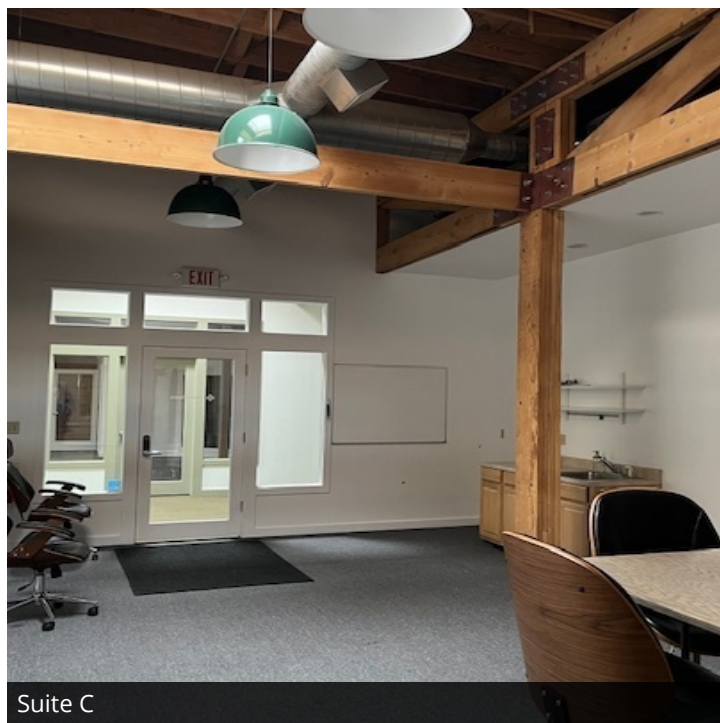
Suite C



Suite C



Suite C



Suite C

***Building
relationships.***

208 East Washington Street Ann Arbor, MI 48104

734.663.0501

Joe Palms, CCIM

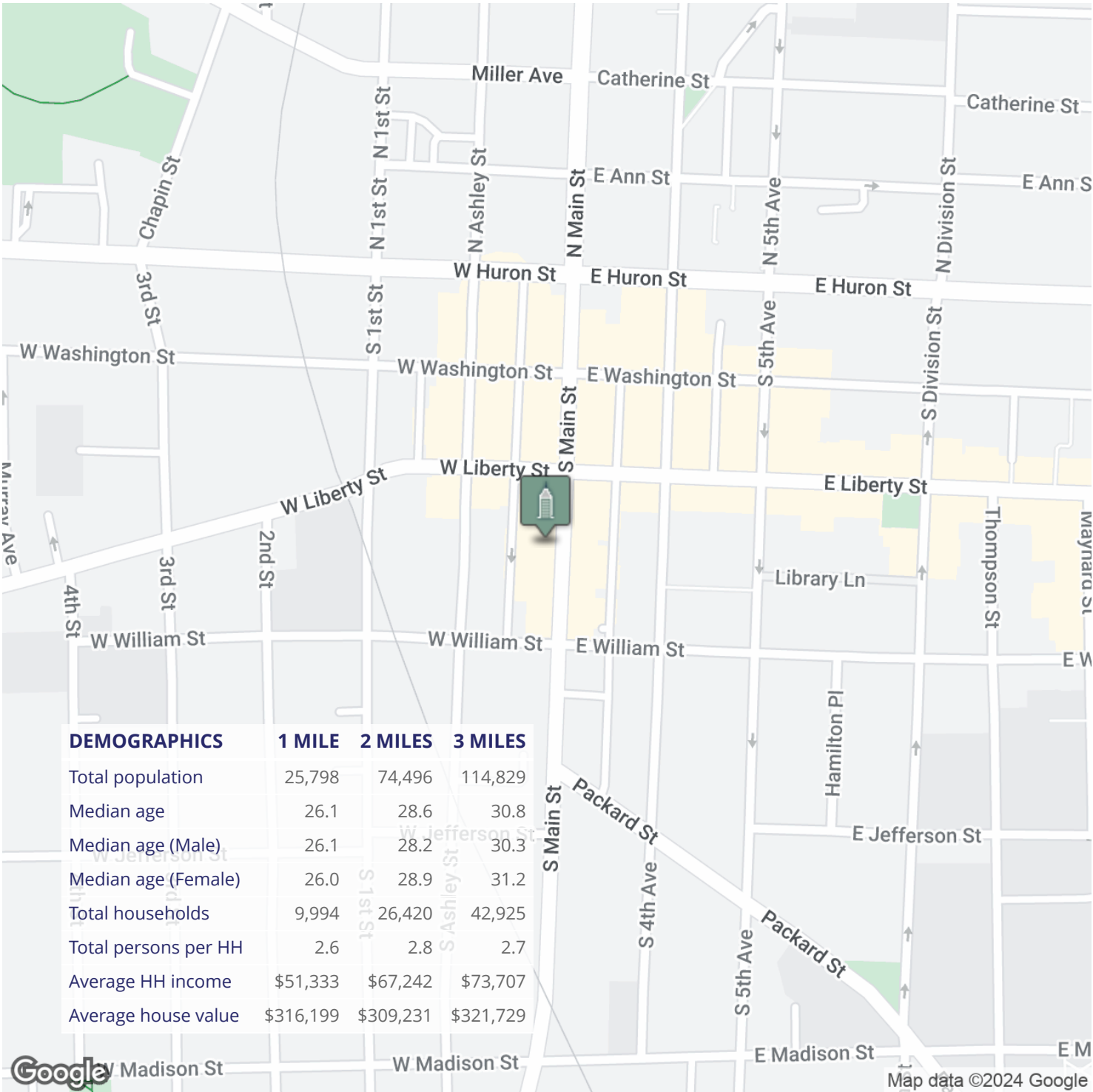
734.662.3676

JPALMS@SWISHERCOMMERCIAL.COM

SWISHERCOMMERCIAL.COM

Downtown Office Space for Lease

320 SOUTH MAIN, ANN ARBOR, MI 48104



**Building
relationships.**

208 East Washington Street Ann Arbor, MI 48104

734.663.0501

Joe Palms, CCIM

734.662.3676

JPALMS@SWISHERCOMMERCIAL.COM

SWISHERCOMMERCIAL.COM