



OFFICE BUILDING FOR SALE

8578 UTICA AVE STE 100

RANCHO CUCAMONGA, CA 91730

9327 Fairway View Pl., #300 // Rancho Cucamonga, CA 91730 // 909.786.4300 // alliedcommercialrealestate.com

Presented By:

TONY M. GUGLIELMO, CCIM

909.786.4302

tony@alliedcre.com

CalDRE #01301532



COMMERCIAL REAL ESTATE

EXECUTIVE SUMMARY



OFFERING SUMMARY	
Sale Price:	\$1,625,000
Building Size:	3,950 SF
Price / SF:	\$411.39
Year Built:	2004
Submarket:	Inland Empire West

PROPERTY OVERVIEW

The subject property is a rare high image ground floor office condo totalling approx. 3,950 sq. ft. It includes a lobby, reception area, nine (9) Private offices, and multiple cubicle spaces. It also features high end finishes with two (2) in-suite restrooms and a kitchenette area. Contact the agent today to schedule a tour of the property.

LOCATION OVERVIEW

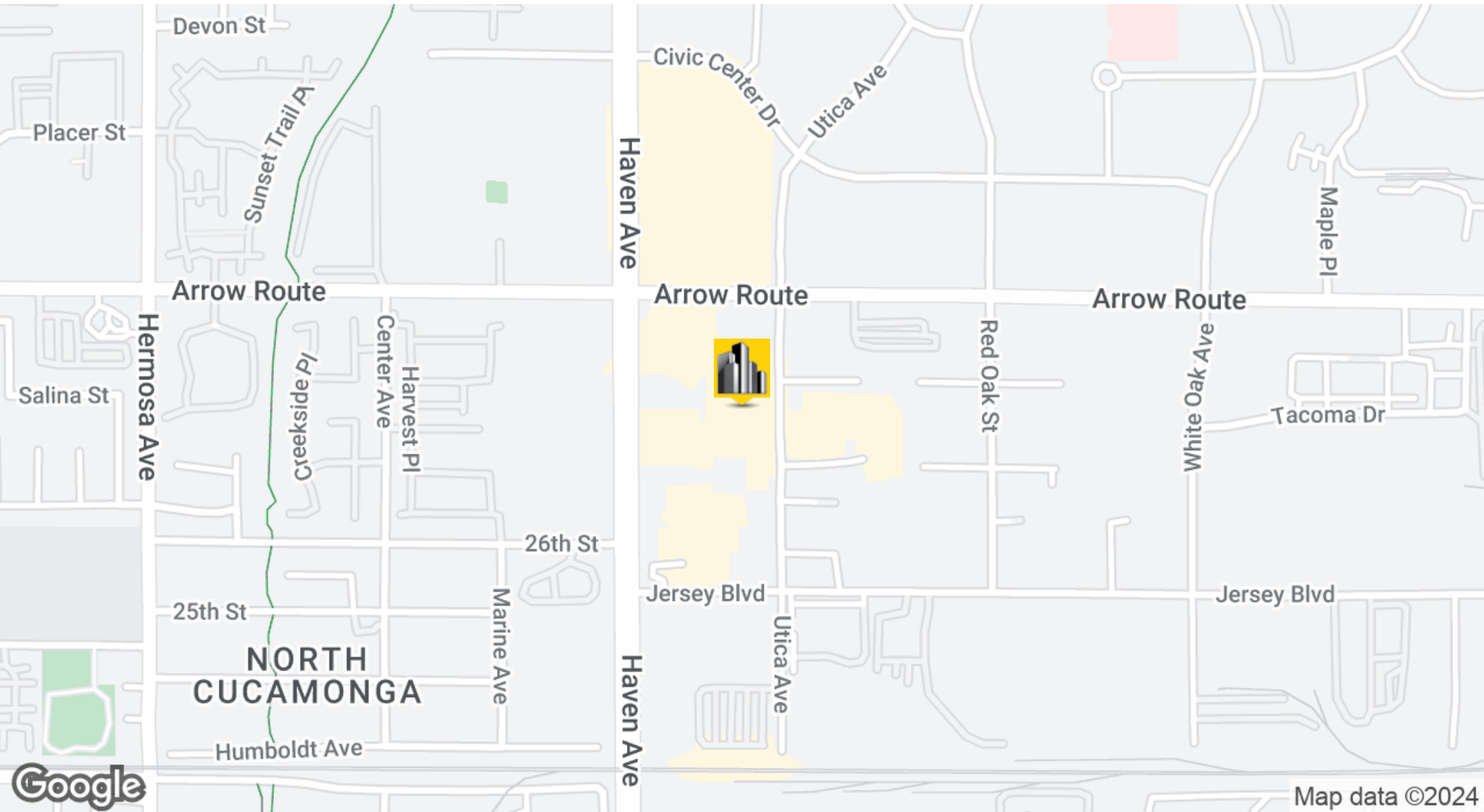
Located in the City of Rancho Cucamonga near the south east corner of Haven Avenue & Arrow Route. Its situated within a couple minutes of the Rancho Cucamonga City Hall, Haven City Market & San Bernardino County Courthouse. Its prime position in the Inland Empire provides a strategic advantage for businesses, with convenient access to major transportation routes. The area boasts a thriving business community, surrounded by a wide array of dining options and retail attractions. Notably, the nearby Victoria Gardens offers a premier shopping and entertainment destination. With a well-educated and diverse workforce, this vibrant locale promises an ideal blend of professional productivity and quality of life for tenants at the property.

TONY M. GUGLIELMO, CCIM
909.786.4302
tony@alliedcre.com
CalDRE #01301532



8578 UTICA AVE STE 100 // Rancho Cucamonga, CA 91730

LOCATION MAP



TONY M. GUGLIELMO, CCIM
909.786.4302
tony@alliedcre.com
CalDRE #01301532

9327 Fairway View Pl., #300 // Rancho Cucamonga, CA 91730 // 909.786.4300 // alliedcommercialrealestate.com



COMMERCIAL REAL ESTATE

The information above has been obtained from sources believed reliable. While we do not doubt its accuracy we have not verified it and make no guarantee, warranty or representation about it. It is your responsibility to independently confirm its accuracy and completeness. Any projections, opinions, assumptions, or estimates used are for example only and do not represent the current or future performance of the property. The value of this transaction to you depends on tax and other factors which should be evaluated by your tax, financial, and legal advisors. You and your advisors should conduct a careful, independent investigation of the property to determine to your satisfaction the suitability of the property for your needs.

8578 UTICA AVE STE 100 // Rancho Cucamonga, CA 91730

ADDITIONAL PHOTOS



TONY M. GUGLIELMO, CCIM
909.786.4302
tony@alliedcre.com
CalDRE #01301532

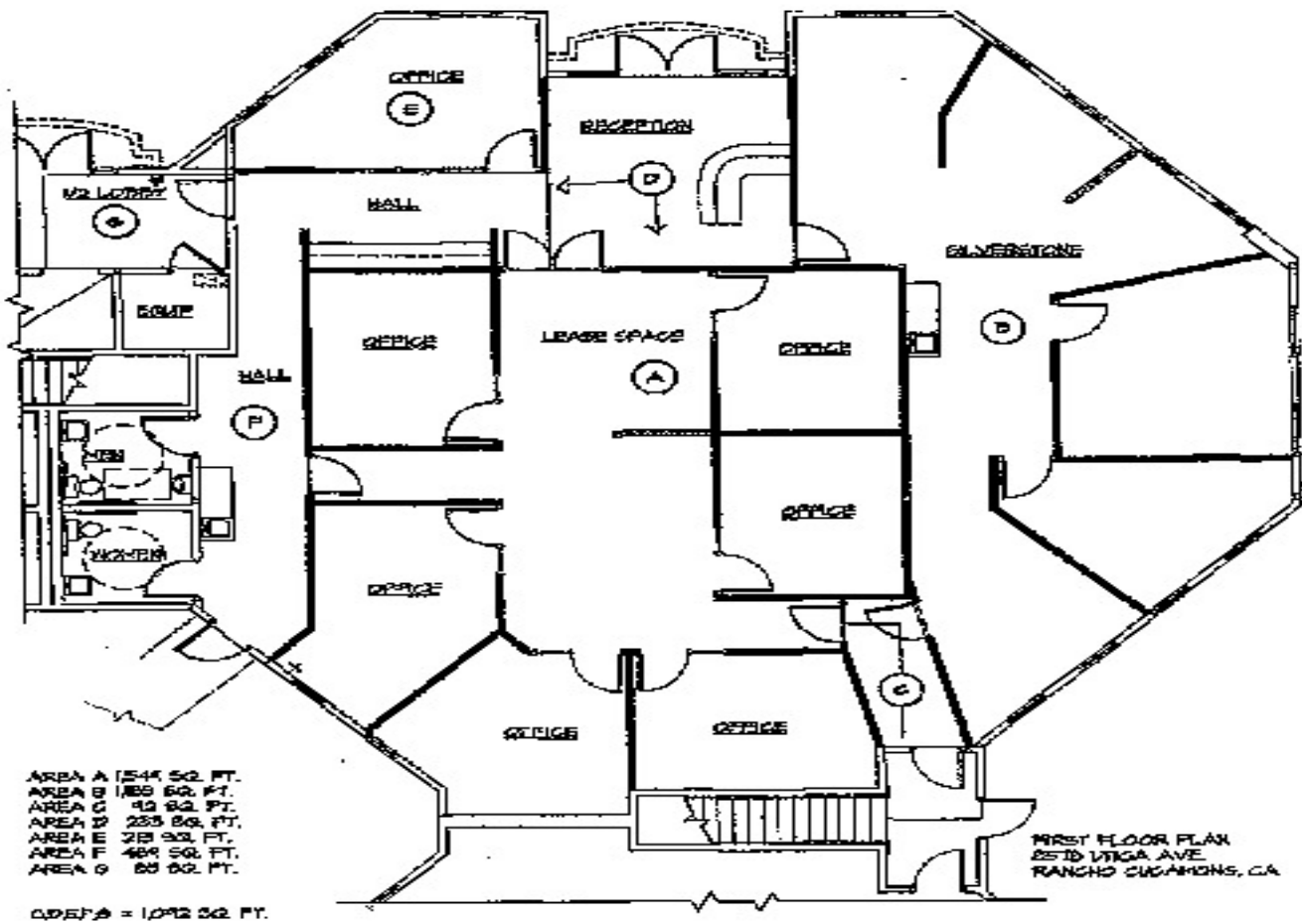
9327 Fairway View Pl., #300 // Rancho Cucamonga, CA 91730 // 909.786.4300 // alliedcommercialrealestate.com



COMMERCIAL REAL ESTATE

The information above has been obtained from sources believed reliable. While we do not doubt its accuracy we have not verified it and make no guarantee, warranty or representation about it. It is your responsibility to independently confirm its accuracy and completeness. Any projections, opinions, assumptions, or estimates used are for example only and do not represent the current or future performance of the property. The value of this transaction to you depends on tax and other factors which should be evaluated by your tax, financial, and legal advisors. You and your advisors should conduct a careful, independent investigation of the property to determine to your satisfaction the suitability of the property for your needs.

FLOOR PLAN



TONY M. GUGLIELMO, CCIM
909.786.4302
tony@alliedcre.com
CalDRE #01301532

9327 Fairway View Pl., #300 // Rancho Cucamonga, CA 91730 // 909.786.4300 // alliedcommercialrealestate.com



COMMERCIAL REAL ESTATE

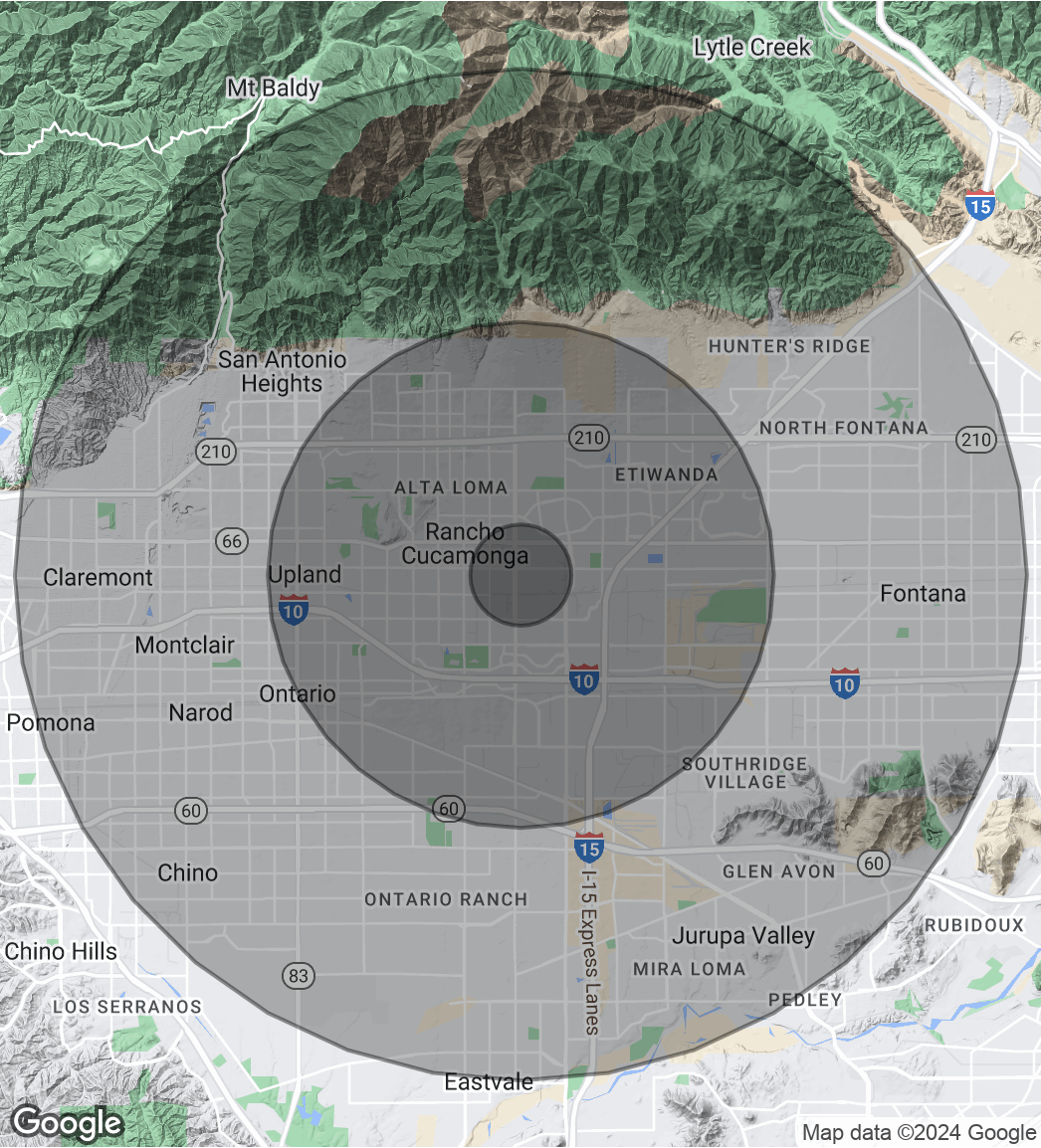
The information above has been obtained from sources believed reliable. While we do not doubt its accuracy we have not verified it and make no guarantee, warranty or representation about it. It is your responsibility to independently confirm its accuracy and completeness. Any projections, opinions, assumptions, or estimates used are for example only and do not represent the current or future performance of the property. The value of this transaction to you depends on tax and other factors which should be evaluated by your tax, financial, and legal advisors. You and your advisors should conduct a careful, independent investigation of the property to determine to your satisfaction the suitability of the property for your needs.

DEMOGRAPHICS MAP & REPORT

POPULATION	1 MILE	5 MILES	10 MILES
Total Population	10,712	296,324	1,015,225
Average Age	32.9	36.4	34.8
Average Age (Male)	29.9	35.1	33.6
Average Age (Female)	33.6	37.7	35.9

HOUSEHOLDS & INCOME	1 MILE	5 MILES	10 MILES
Total Households	4,197	96,208	298,074
# of Persons per HH	2.6	3.1	3.4
Average HH Income	\$72,050	\$97,251	\$94,903
Average House Value	\$143,257	\$414,705	\$417,922

RACE	1 MILE	5 MILES	10 MILES
Total Population - White	4,893	151,824	474,908
Total Population - Black	2,003	26,998	69,831
Total Population - Asian	1,290	31,898	100,018
Total Population - Hawaiian	16	672	2,707
Total Population - American Indian	102	2,890	9,046
Total Population - Other	1,181	50,503	258,516
2020 American Community Survey (ACS)			



TONY M. GUGLIELMO, CCIM
909.786.4302
tony@alliedcre.com
CalDRE #01301532

