



Loughton Dentistry Building

502 Wicks Lane | Billings, Montana 59105

Property Description

Unlock the potential of your business with our brand-new professional office space for lease in the heart of Billings Heights. This opportunity comes with a shell turnover, providing a canvas for you to tailor the space to your unique business needs.

\$16.00/SF Cold Shell Turnover

\$29.00/SF Warm Shell Turnover (for qualified tenants)

Lease Rate: \$16.00 - 29.00 SF/yr (NNN)

Property Highlights

- Warm Shell Turnover
- Customizable Space
- Strategic Location
- Flexibility in Design
- Cutting-edge Infrastructure
- Proactive Property Management





FOR LEASE



OFFICE BUILDING



1,097 - 4,374
SF



<https://www.naibusinessproperties.com>

Haley Vannatta, CCIM

Broker | 406.294.6317

hvannatta@naibusinessproperties.com | MT #62446

Matt Robertson, SIOR

Broker/Principal | 406.294.6308

mrobertson@naibusinessproperties.com

NO WARRANTY, EXPRESS OR IMPLIED, IS MADE AS TO THE ACCURACY OF THE INFORMATION CONTAINED HEREIN. THIS INFORMATION IS SUBMITTED SUBJECT TO ERRORS, OMISSIONS, CHANGE OF PRICE, RENTAL OR OTHER CONDITIONS, WITHDRAWAL WITHOUT NOTICE, AND IS SUBJECT TO ANY SPECIAL LISTING CONDITIONS IMPOSED BY OUR PRINCIPALS. COOPERATING BROKERS, BUYERS, TENANTS AND OTHER PARTIES WHO RECEIVE THIS DOCUMENT SHOULD NOT RELY ON IT, BUT SHOULD USE IT AS A STARTING POINT OF ANALYSIS, AND SHOULD INDEPENDENTLY CONFIRM THE ACCURACY OF THE INFORMATION CONTAINED HEREIN THROUGH A DUE DILIGENCE REVIEW OF THE BOOKS, RECORDS, FILES AND DOCUMENTS THAT CONSTITUTE RELIABLE SOURCES OF THE INFORMATION DESCRIBED HEREIN. LOGOS ARE FOR IDENTIFICATION PURPOSES ONLY AND MAY BE TRADEMARKS OF THEIR RESPECTIVE COMPANIES. NAI CAPITAL, INC. CA BRE LIC. #01990696.



FOR LEASE



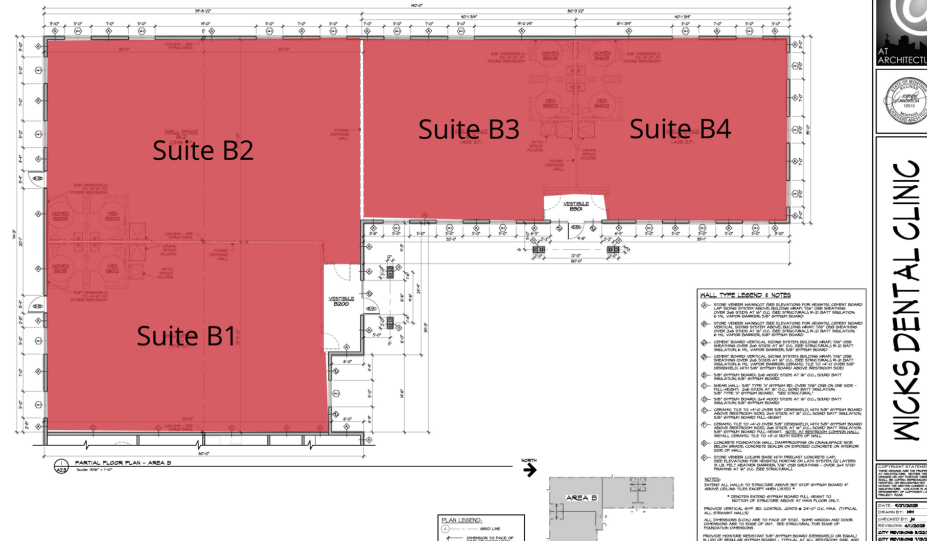
OFFICE BUILDING



1,097 - 4,374
SF

LEGEND

Available



LEASE INFORMATION

Lease Type:	NNN
Total Space:	1,097 - 4,374 SF

Lease Term:	Negotiable
Lease Rate:	\$16.00 - \$29.00 SF/yr

AVAILABLE SPACES

SUITE	TENANT	SIZE	TYPE	RATE	DESCRIPTION
Suite B1	Available	1,097 - 4,374 SF	NNN	\$16.00 - 29.00 SF/yr	-
Suite B2	Available	2,398 - 4,374 SF	NNN	\$16.00 - 29.00 SF/yr	-
Suite B3	Available	1,305 - 2,810 SF	NNN	\$16.00 - 29.00 SF/yr	-
Suite B4	Available	1,305 - 2,810 SF	NNN	\$16.00 - 29.00 SF/yr	-



<https://www.naibusinessproperties.com>

Haley Vannatta, CCIM

Broker | 406.294.6317

hvannatta@naibusinessproperties.com | MT #62446

Matt Robertson, SIOR

Broker/Principal | 406.294.6308

mrobertson@naibusinessproperties.com

NO WARRANTY, EXPRESS OR IMPLIED, IS MADE AS TO THE ACCURACY OF THE INFORMATION CONTAINED HEREIN. THIS INFORMATION IS SUBMITTED SUBJECT TO ERRORS, OMISSIONS, CHANGE OF PRICE, RENTAL OR OTHER CONDITIONS, WITHDRAWAL WITHOUT NOTICE, AND IS SUBJECT TO ANY SPECIAL LISTING CONDITIONS IMPOSED BY OUR PRINCIPALS, COOPERATING BROKERS, BUYERS, TENANTS AND OTHER PARTIES WHO RECEIVE THIS DOCUMENT SHOULD NOT RELY ON IT, BUT SHOULD USE IT AS A STARTING POINT OF ANALYSIS, AND SHOULD INDEPENDENTLY CONFIRM THE ACCURACY OF THE INFORMATION CONTAINED HEREIN THROUGH A DUE DILIGENCE REVIEW OF THE BOOKS, RECORDS, FILES AND DOCUMENTS THAT CONSTITUTE RELIABLE SOURCES OF THE INFORMATION DESCRIBED HEREIN. LOGOS ARE FOR IDENTIFICATION PURPOSES ONLY AND MAY BE TRADEMARKS OF THEIR RESPECTIVE COMPANIES. NAI CAPITAL, INC. CA BRE LIC. #01990696.



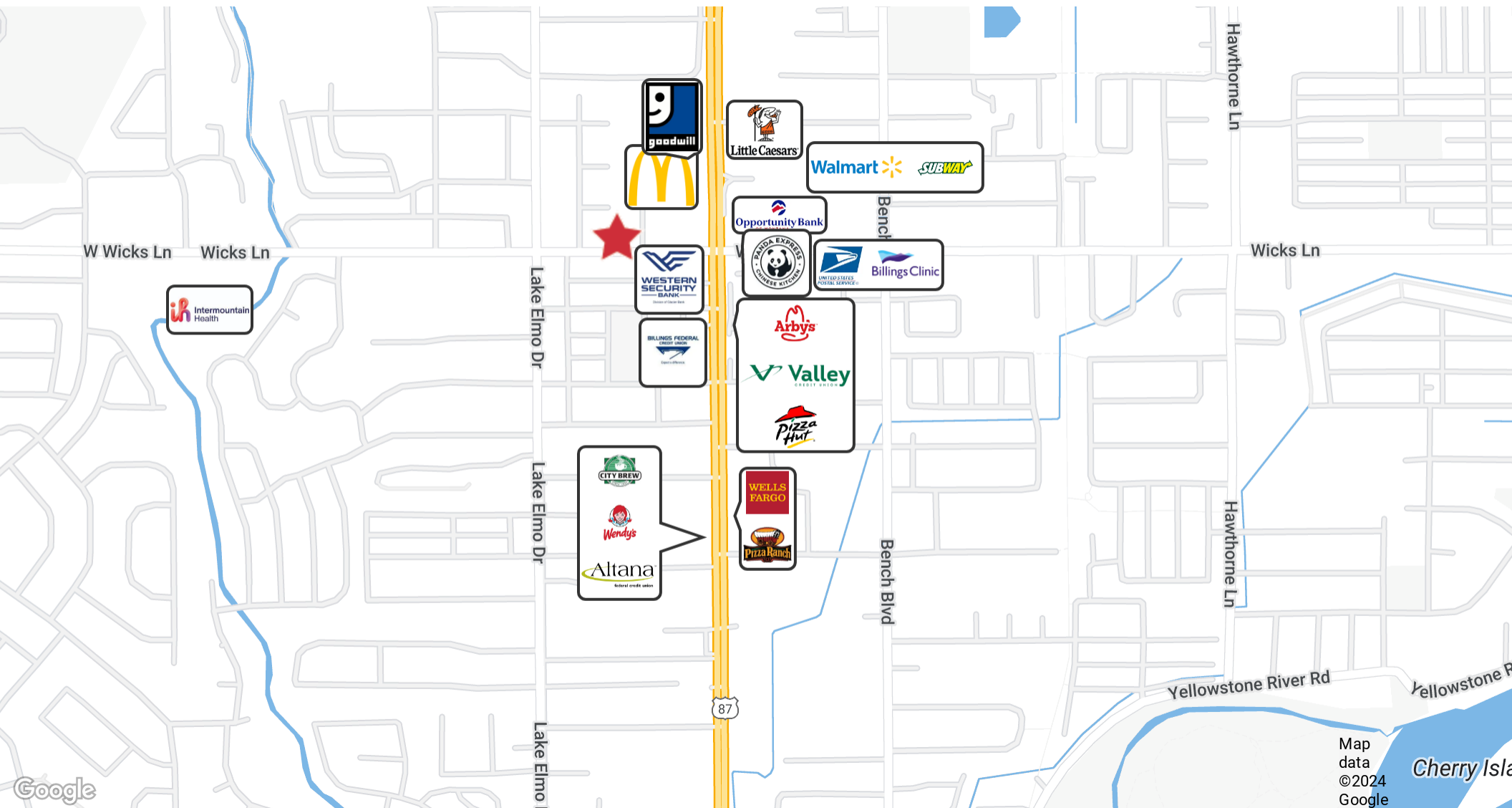
FOR LEASE



OFFICE BUILDING



1,097 - 4,374
SF



Map
data
©2024
Google



<https://www.naibusinessproperties.com>

Haley Vannatta, CCIM

Broker | 406.294.6317

hvannatta@naibusinessproperties.com | MT #62446

Matt Robertson, SIOR

Broker/Principal | 406.294.6308

mrobertson@naibusinessproperties.com

NO WARRANTY, EXPRESS OR IMPLIED, IS MADE AS TO THE ACCURACY OF THE INFORMATION CONTAINED HEREIN. THIS INFORMATION IS SUBMITTED SUBJECT TO ERRORS, OMISSIONS, CHANGE OF PRICE, RENTAL OR OTHER CONDITIONS, WITHDRAWAL WITHOUT NOTICE, AND IS SUBJECT TO ANY SPECIAL LISTING CONDITIONS IMPOSED BY OUR PRINCIPALS, COOPERATING BROKERS, BUYERS, TENANTS AND OTHER PARTIES WHO RECEIVE THIS DOCUMENT SHOULD NOT RELY ON IT, BUT SHOULD USE IT AS A STARTING POINT OF ANALYSIS, AND SHOULD INDEPENDENTLY CONFIRM THE ACCURACY OF THE INFORMATION CONTAINED HEREIN THROUGH A DUE DILIGENCE REVIEW OF THE BOOKS, RECORDS, FILES AND DOCUMENTS THAT CONSTITUTE RELIABLE SOURCES OF THE INFORMATION DESCRIBED HEREIN. LOGOS ARE FOR IDENTIFICATION PURPOSES ONLY AND MAY BE TRADEMARKS OF THEIR RESPECTIVE COMPANIES. NAI CAPITAL, INC. CA BRE LIC. #01900696.



FOR LEASE



OFFICE BUILDING



1,097 - 4,374
SF



<https://www.naibusinessproperties.com>

Haley Vannatta, CCIM

Broker | 406.294.6317

hvannatta@naibusinessproperties.com | MT #62446

Matt Robertson, SIOR

Broker/Principal | 406.294.6308

mrobertson@naibusinessproperties.com

NO WARRANTY, EXPRESS OR IMPLIED, IS MADE AS TO THE ACCURACY OF THE INFORMATION CONTAINED HEREIN. THIS INFORMATION IS SUBMITTED SUBJECT TO ERRORS, OMISSIONS, CHANGE OF PRICE, RENTAL OR OTHER CONDITIONS, WITHDRAWAL WITHOUT NOTICE, AND IS SUBJECT TO ANY SPECIAL LISTING CONDITIONS IMPOSED BY OUR PRINCIPALS, COOPERATING BROKERS, BUYERS, TENANTS AND OTHER PARTIES WHO RECEIVE THIS DOCUMENT SHOULD NOT RELY ON IT, BUT SHOULD USE IT AS A STARTING POINT OF ANALYSIS, AND SHOULD INDEPENDENTLY CONFIRM THE ACCURACY OF THE INFORMATION CONTAINED HEREIN THROUGH A DUE DILIGENCE REVIEW OF THE BOOKS, RECORDS, FILES AND DOCUMENTS THAT CONSTITUTE RELIABLE SOURCES OF THE INFORMATION DESCRIBED HEREIN. LOGOS ARE FOR IDENTIFICATION PURPOSES ONLY AND MAY BE TRADEMARKS OF THEIR RESPECTIVE COMPANIES. NAI CAPITAL, INC. CA BRE LIC. #01990696.



FOR LEASE



OFFICE BUILDING

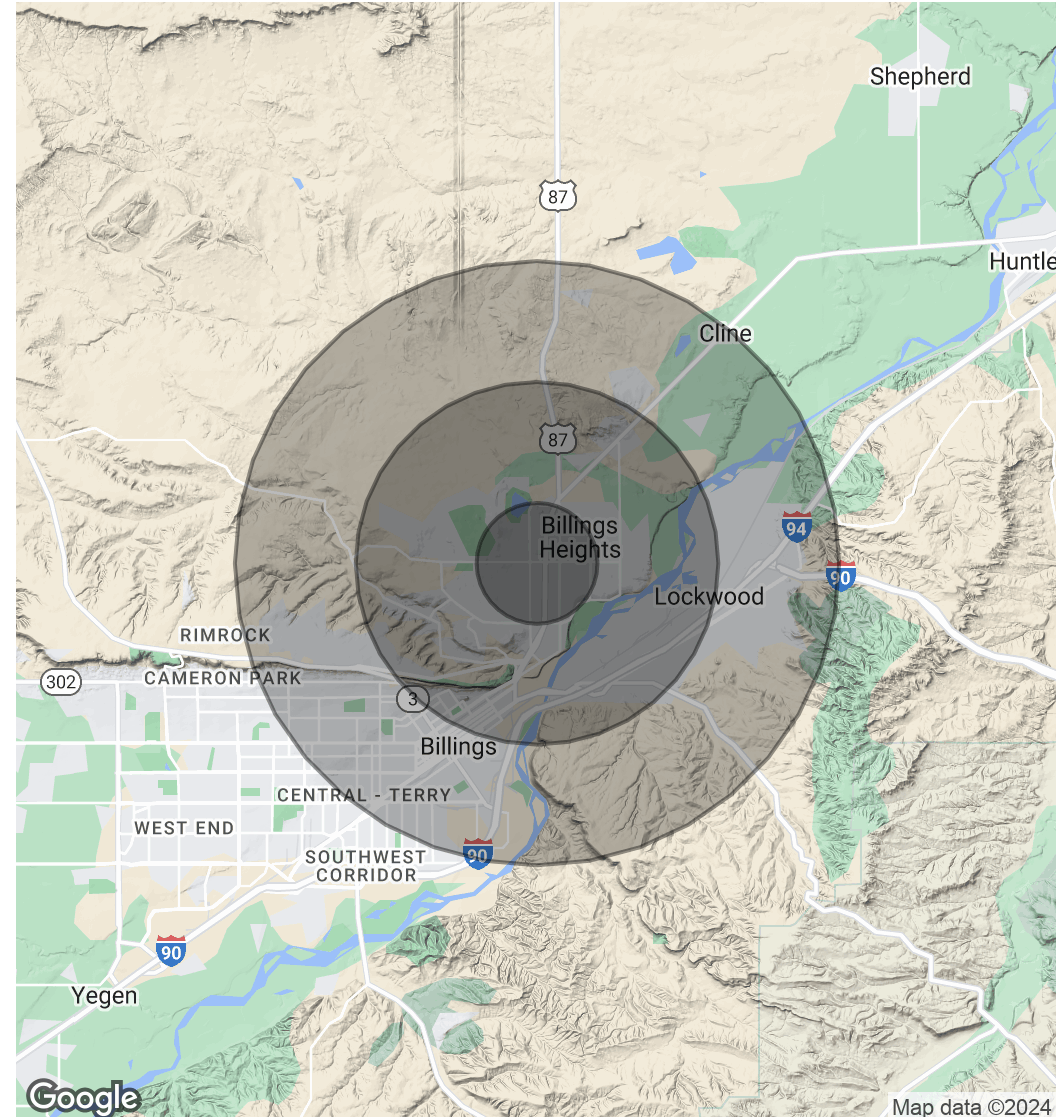


1,097 - 4,374
SF

POPULATION	1 MILE	3 MILES	5 MILES
Total Population	9,114	30,801	65,914
Average Age	36.2	35.8	36.1
Average Age (Male)	37.3	36.4	35.5
Average Age (Female)	35.7	36.1	37.4

HOUSEHOLDS & INCOME	1 MILE	3 MILES	5 MILES
Total Households	4,230	13,810	29,856
# of Persons per HH	2.2	2.2	2.2
Average HH Income	\$62,264	\$67,608	\$68,164
Average House Value	\$186,636	\$216,884	\$212,829

2020 American Community Survey (ACS)



<https://www.naibusinessproperties.com>

Haley Vannatta, CCIM

Broker | 406.294.6317

hvannatta@naibusinessproperties.com | MT #62446

Matt Robertson, SIOR

Broker/Principal | 406.294.6308

mrobertson@naibusinessproperties.com

NO WARRANTY, EXPRESS OR IMPLIED, IS MADE AS TO THE ACCURACY OF THE INFORMATION CONTAINED HEREIN. THIS INFORMATION IS SUBMITTED SUBJECT TO ERRORS, OMISSIONS, CHANGE OF PRICE, RENTAL OR OTHER CONDITIONS, WITHDRAWAL WITHOUT NOTICE, AND IS SUBJECT TO ANY SPECIAL LISTING CONDITIONS IMPOSED BY OUR PRINCIPALS, COOPERATING BROKERS, BUYERS, TENANTS AND OTHER PARTIES WHO RECEIVE THIS DOCUMENT SHOULD NOT RELY ON IT, BUT SHOULD USE IT AS A STARTING POINT OF ANALYSIS, AND SHOULD INDEPENDENTLY CONFIRM THE ACCURACY OF THE INFORMATION CONTAINED HEREIN THROUGH A DUE DILIGENCE REVIEW OF THE BOOKS, RECORDS, FILES AND DOCUMENTS THAT CONSTITUTE RELIABLE SOURCES OF THE INFORMATION DESCRIBED HEREIN. LOGOS ARE FOR IDENTIFICATION PURPOSES ONLY AND MAY BE TRADEMARKS OF THEIR RESPECTIVE COMPANIES. NAI CAPITAL, INC. CA BRE LIC. #01990696.