

700 W 23RD ST - BUILDING B-20 | OFFICE | CORPORATE PARK

700 West 23rd Street, Panama City, FL 32405



360° VIRTUAL TOUR

PROPERTY DESCRIPTION

Five Bridges Real Estate Services Co. is pleased to present the available office suite at 700 W 23rd Street, Suite B-20 available for lease. This 1550+/- SF office unit is situated in Corporate Plaza Office Park has an efficient layout with four large offices, kitchen /break room and restroom. The estimated Operating Expenses/ Additional Rents are currently \$3.50/ SF. For additional information, contact Kevin Wattenbarger, CCIM kevin@kwa-cre.com, or 850.913.9133 (voice or text).

PROPERTY HIGHLIGHTS

- 23rd Street Corporate Park | Suite B -20
- 1,550 +/- SF Unit
- 4 Large, Private Offices

OFFERING SUMMARY

Lease Rate:	\$18.00 SF/yr (NN)
Number of Units:	1
Available SF:	1,550 SF
Lot Size:	0.08 Acres
Building Size:	1,550 SF

DEMOGRAPHICS	0.25 MILES	0.5 MILES	1 MILE
Total Households	164	599	2,477
Total Population	451	1,565	5,808
Average HH Income	\$79,297	\$74,307	\$70,208

Kevin Wattenbarger, CCIM

Qualifying Broker
850.913.9133
kevin@kwa-cre.com



FiveBridgeRealEstate.com

OFFICE BUILDING FOR LEASE

700 W 23RD ST - BUILDING B-20 | OFFICE | CORPORATE PARK

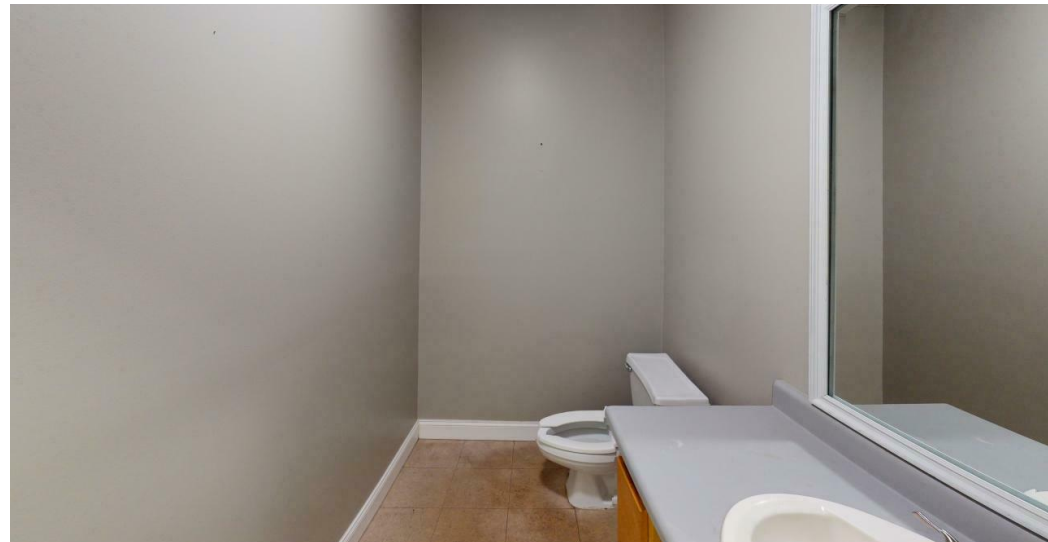
700 West 23rd Street, Panama City, FL 32405



OFFICE BUILDING FOR LEASE

700 W 23RD ST - BUILDING B-20 | OFFICE | CORPORATE PARK

700 West 23rd Street, Panama City, FL 32405



Kevin Wattenbarger, CCIM
Qualifying Broker
850.913.9133
kevin@kwa-cre.com



FiveBridgeRealEstate.com

OFFICE BUILDING FOR LEASE

700 W 23RD ST - BUILDING B-20 | OFFICE | CORPORATE PARK

700 West 23rd Street, Panama City, FL 32405



Kevin Wattenbarger, CCIM

Qualifying Broker

850.913.9133

kevin@kwa-cre.com



FiveBridgeRealEstate.com

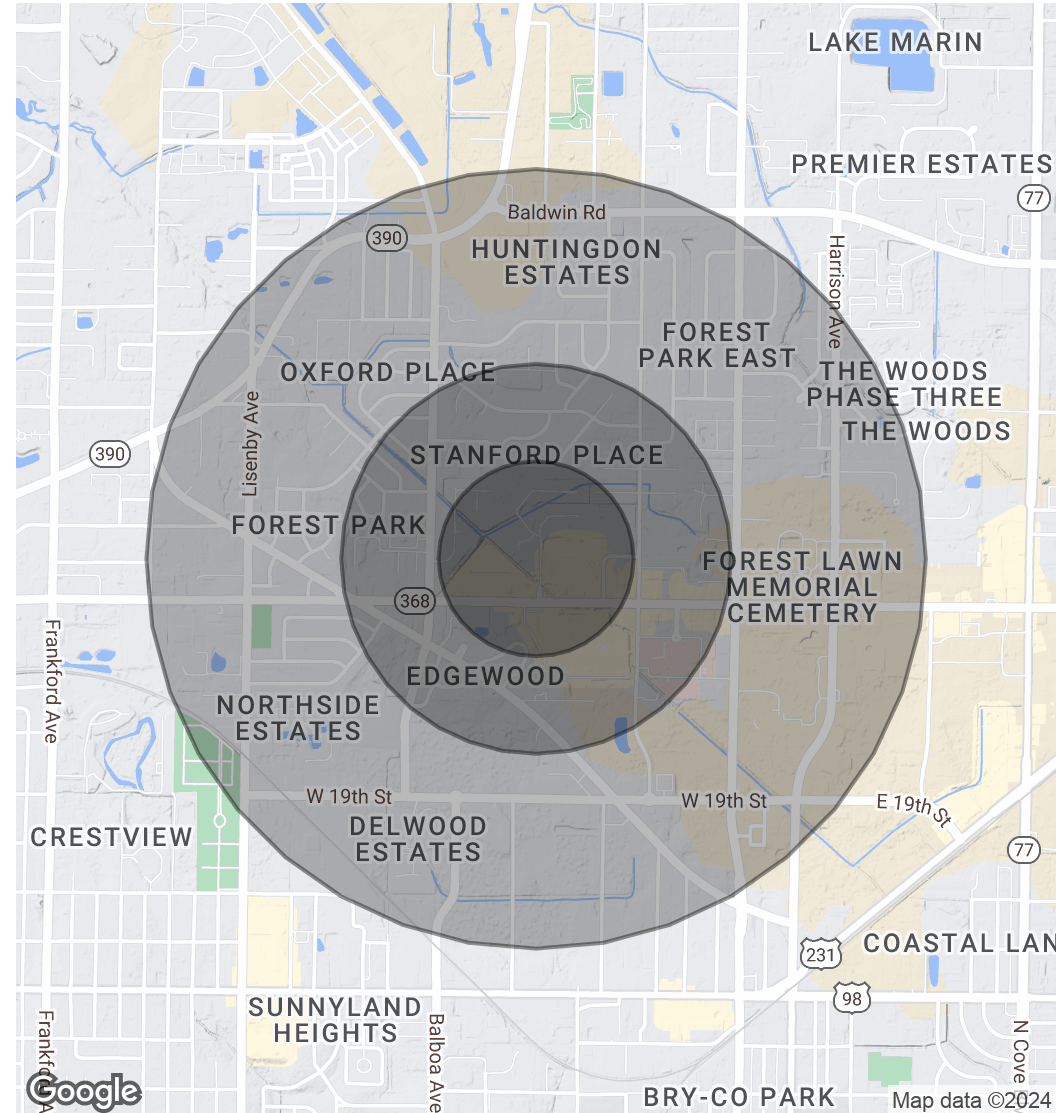
700 W 23RD ST - BUILDING B-20 | OFFICE | CORPORATE PARK

700 West 23rd Street, Panama City, FL 32405

POPULATION	0.25 MILES	0.5 MILES	1 MILE
Total Population	451	1,565	5,808
Average Age	37.0	36.2	36.7
Average Age (Male)	39.2	37.6	35.3
Average Age (Female)	34.7	36.6	39.5

HOUSEHOLDS & INCOME	0.25 MILES	0.5 MILES	1 MILE
Total Households	164	599	2,477
# of Persons per HH	2.8	2.6	2.3
Average HH Income	\$79,297	\$74,307	\$70,208
Average House Value	\$233,249	\$217,066	\$199,445

2020 American Community Survey (ACS)



Kevin Wattenbarger, CCIM

Qualifying Broker

850.913.9133

kevin@kwa-cre.com



FiveBridgeRealEstate.com