

Available: 11.91 Acres



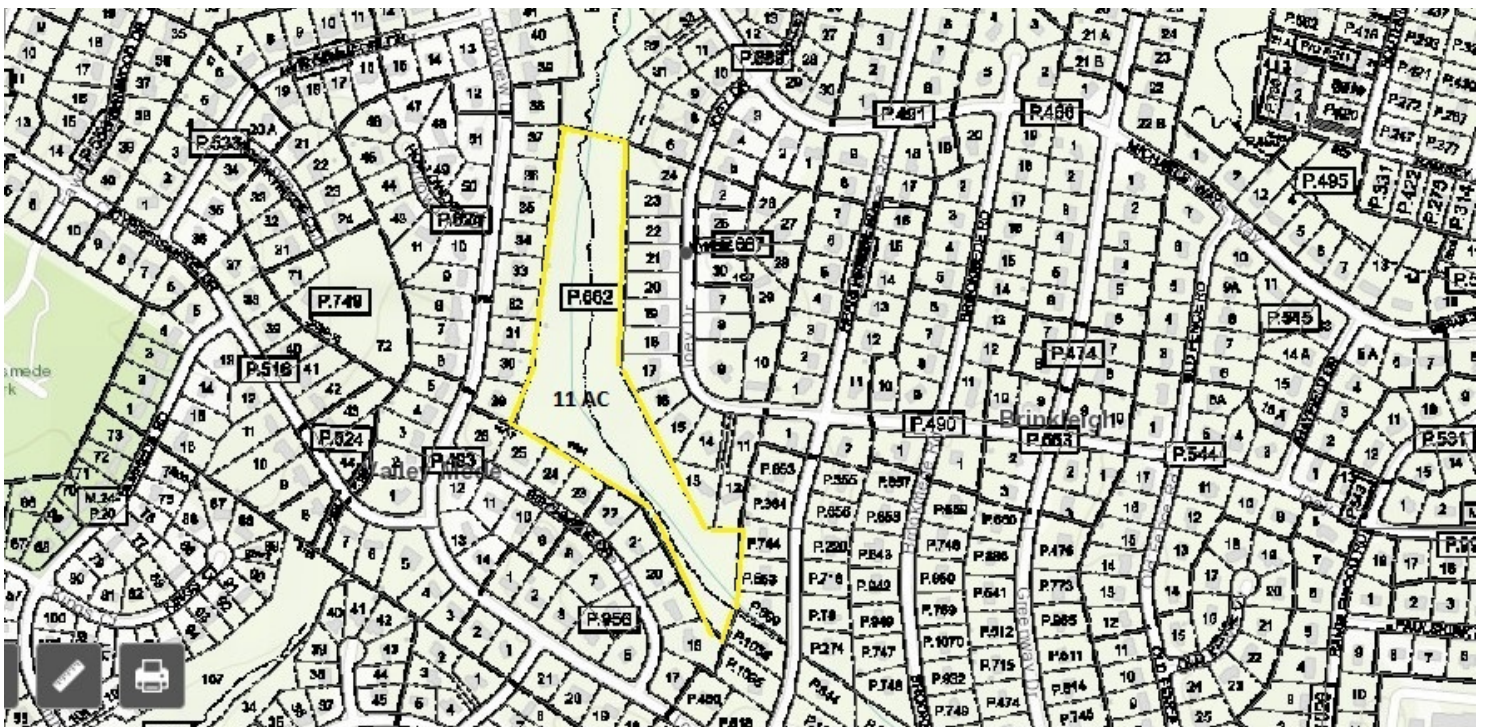
ZONING: Residential

Available: 11.91 Acres



**LEE &
ASSOCIATES**

COMMERCIAL REAL ESTATE SERVICES



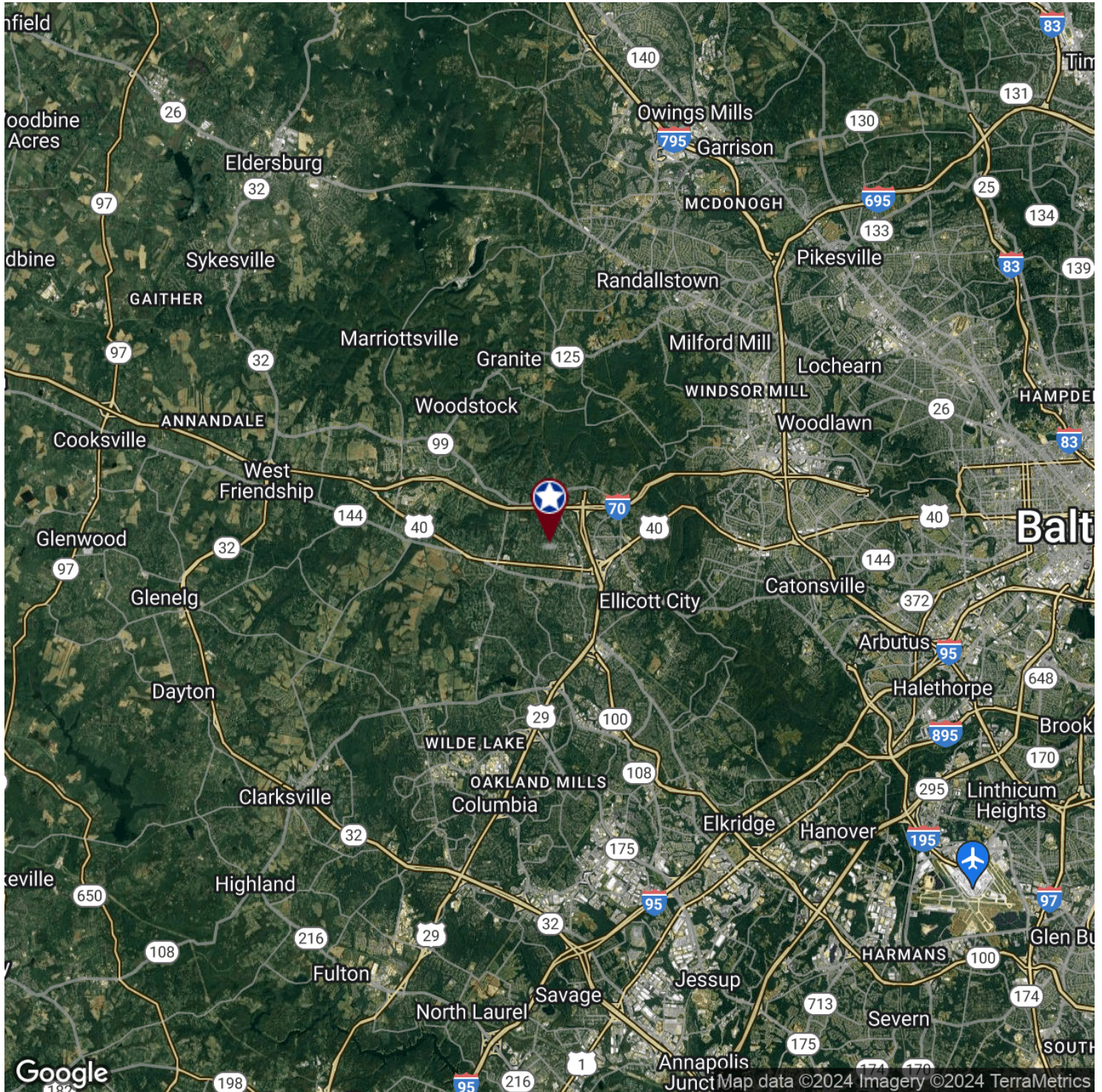
All information furnished regarding property for sale, rental or financing is from sources deemed reliable, but no warranty or representation is made to the accuracy thereof and same is submitted to errors, omissions, change of price, rental or other conditions prior to sale, lease or financing or withdrawal without notice. No liability of any kind is to be imposed on the broker herein.

LAND FOR SALE

JOEY DRIVE

Ellicott City, MD 21042

Available: 11.91 Acres



Steve Weiss
Senior Vice President
443.741.4051
sweiss@lee-associates.com

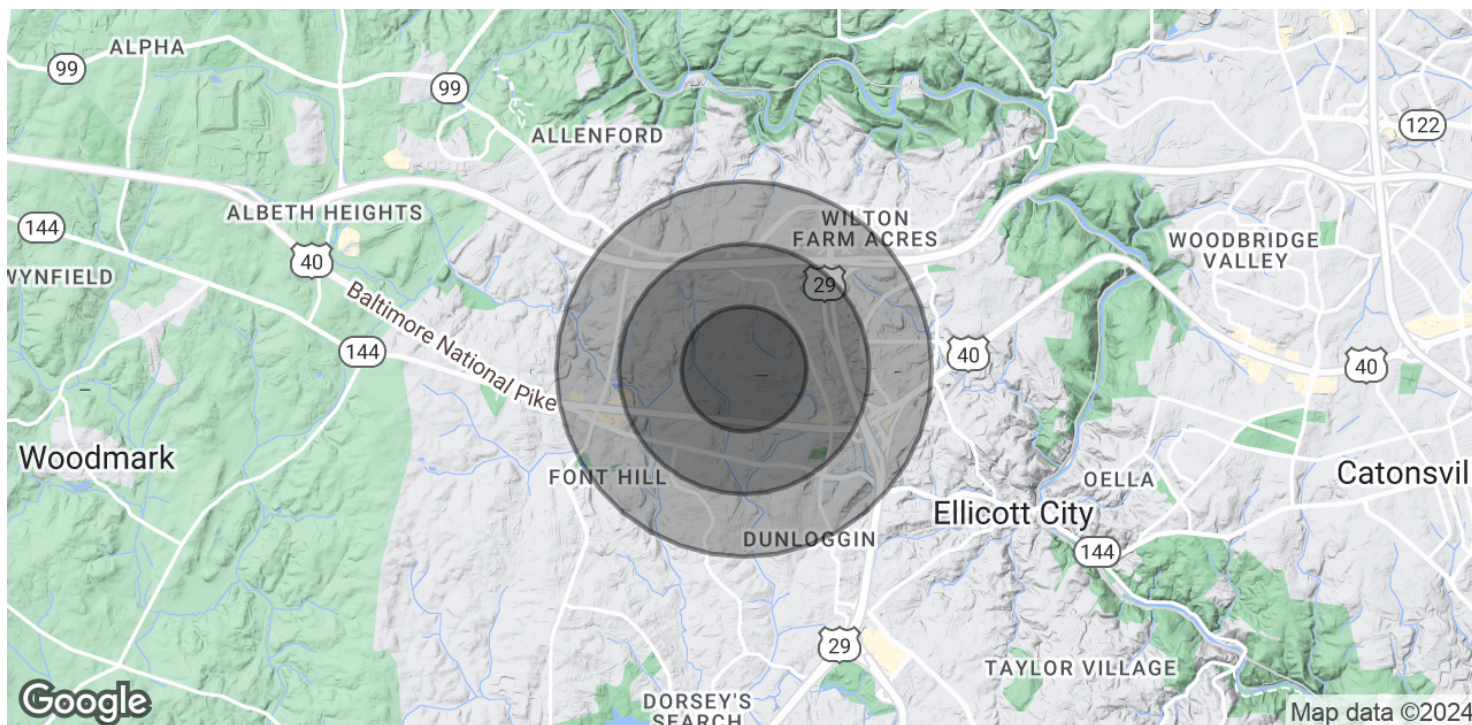
All information furnished regarding property for sale, rental or financing is from sources deemed reliable, but no warranty or representation is made to the accuracy thereof and same is submitted to errors, omissions, change of price, rental or other conditions prior to sale, lease or financing or withdrawal without notice. No liability of any kind is to be imposed on the broker herein.

LAND FOR SALE

JOEY DRIVE

Ellicott City, MD 21042

Available: 11.91 Acres



POPULATION

	0.5 MILES	1 MILE	1.5 MILES
Total Population	2,932	8,289	21,170
Average Age	39.4	43.0	41.0
Average Age (Male)	42.4	44.1	40.7
Average Age (Female)	34.2	41.0	41.1

HOUSEHOLDS & INCOME

	0.5 MILES	1 MILE	1.5 MILES
Total Households	996	2,915	7,627
# of Persons per HH	2.9	2.8	2.8
Average HH Income	\$148,724	\$150,357	\$136,985
Average House Value	\$536,766	\$501,943	\$479,488

2020 American Community Survey (ACS)

Steve Weiss
Senior Vice President
443.741.4051
sweiss@lee-associates.com

All information furnished regarding property for sale, rental or financing is from sources deemed reliable, but no warranty or representation is made to the accuracy thereof and same is submitted to errors, omissions, change of price, rental or other conditions prior to sale, lease or financing or withdrawal without notice. No liability of any kind is to be imposed on the broker herein.