



13924 MOUNTAIN AVE

CHINO, CALIFORNIA 91710

OFFERING SUMMARY

Lease Rate: \$1.26 SF/month (NNN)

OPEX: \$.33 PSF

Available SF: 20,369 SF

Lot Size: 44,158 SF

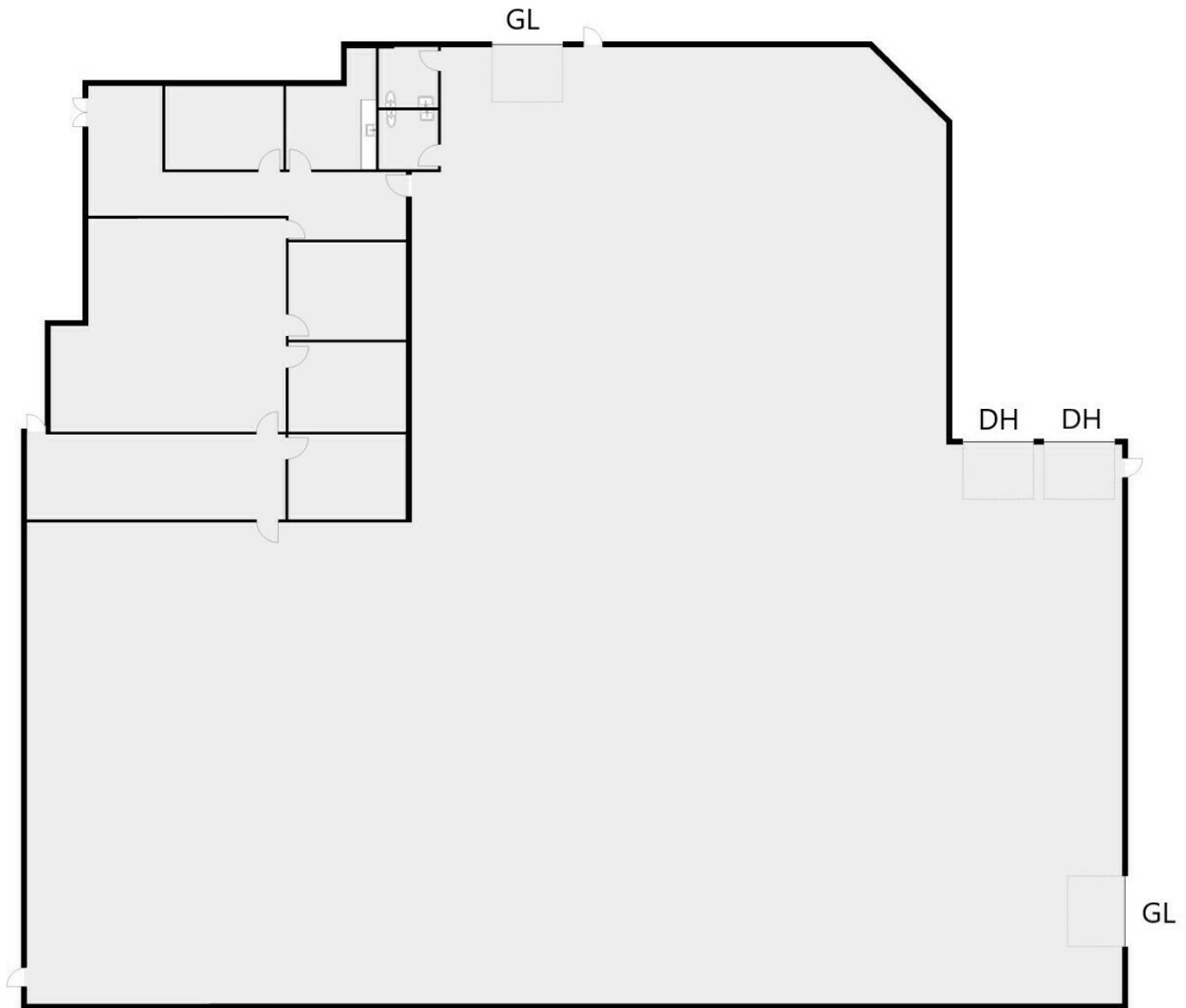
Property Highlights

- +/- 20,369 SF High Image Free Standing Industrial Warehouse
- +/- 3,275 SF of Renovated Offices
- 24' Minimum Warehouse Clearance
- Two (2) Dock High and Two (2) Oversized Grade Level Doors
- 400 amps 277/480 Volts Power
- Sprinklered and Skylights in Warehouse
- Conveniently Located by the 71 and 60 Freeways

Richard Lee, SIOR
Executive Vice President
909.243.7601
rlee@naicapital.com
CA DRE #01757870

Nicholas Chang, CCIM, SIOR
Executive Vice President
909.243.7614
nchang@naicapital.com
CA DRE #01344844

No warranty, express or implied, is made as to the accuracy of the information contained herein. This information is submitted subject to errors, omissions, change of price, rental or other conditions, withdrawal without notice, and is subject to any special listing conditions imposed by our principals. Cooperating brokers, buyers, tenants and other parties who receive this document should not rely on it, but should use it as a starting point of analysis, and should independently confirm the accuracy of the information contained herein through a due diligence review of the books, records, files and documents that constitute reliable sources of the information described herein. Logos are for identification purposes only and may be trademarks of their respective companies. NAI Capital Commercial, Inc. CAL DRE Lic. #02130474



Richard Lee, SIOR

Executive Vice President

909.243.7601

rlee@naicapital.com

CA DRE #01757870

Nicholas Chang, CCIM, SIOR

Executive Vice President

909.243.7614

nchang@naicapital.com

CA DRE #01344844

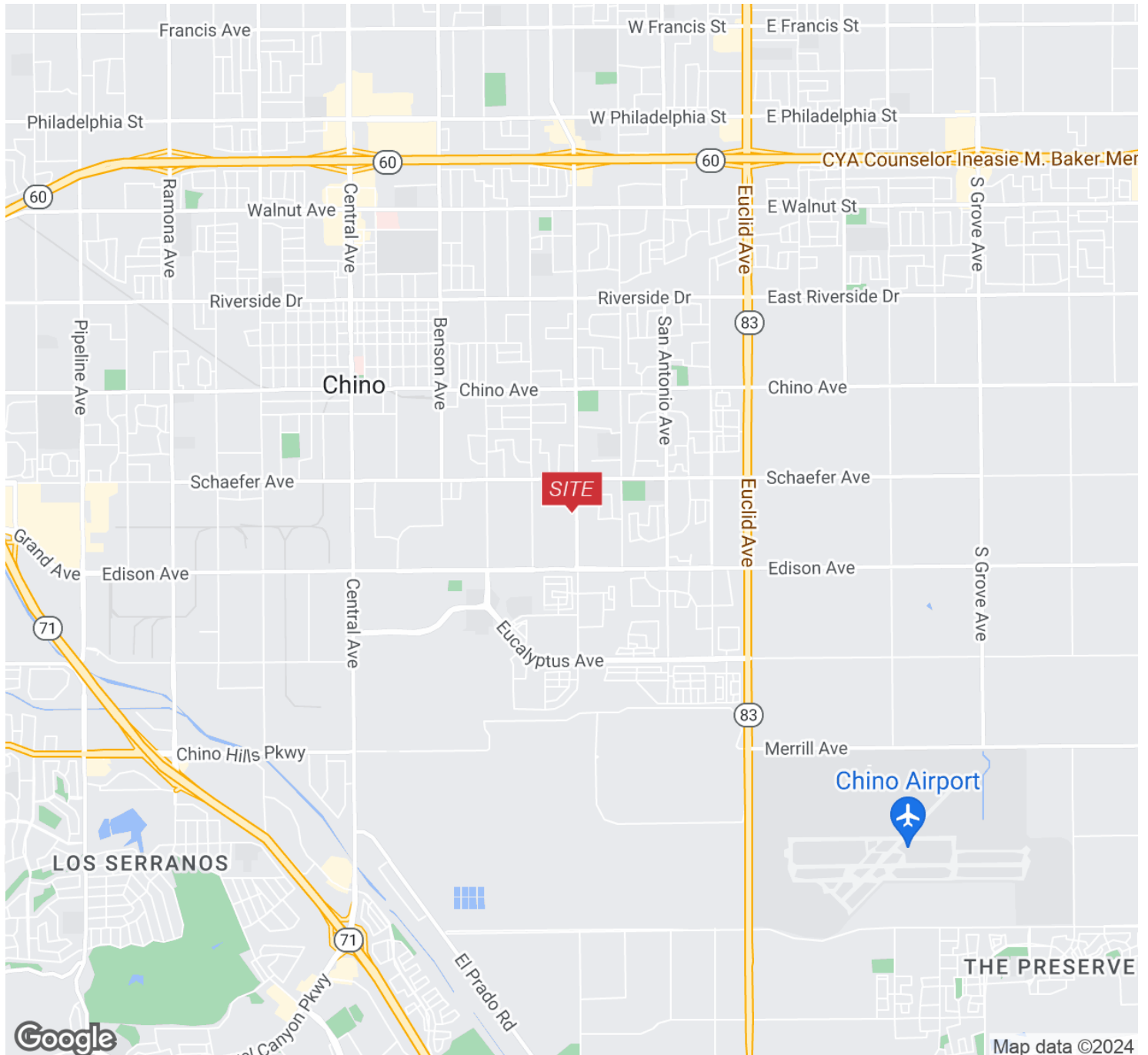
No warranty, express or implied, is made as to the accuracy of the information contained herein. This information is submitted subject to errors, omissions, change of price, rental or other conditions, withdrawal without notice, and is subject to any special listing conditions imposed by our principals. Cooperating brokers, buyers, tenants and other parties who receive this document should not rely on it, but should use it as a starting point of analysis, and should independently confirm the accuracy of the information contained herein through a due diligence review of the books, records, files and documents that constitute reliable sources of the information described herein. Logos are for identification purposes only and may be trademarks of their respective companies. NAI Capital Commercial, Inc. CAL DRE Lic. #02130474



Richard Lee, SIOR
Executive Vice President
909.243.7601
rlee@naicapital.com
CA DRE #01757870

Nicholas Chang, CCIM, SIOR
Executive Vice President
909.243.7614
nchang@naicapital.com
CA DRE #01344844

No warranty, express or implied, is made as to the accuracy of the information contained herein. This information is submitted subject to errors, omissions, change of price, rental or other conditions, withdrawal without notice, and is subject to any special listing conditions imposed by our principals. Cooperating brokers, buyers, tenants and other parties who receive this document should not rely on it, but should use it as a starting point of analysis, and should independently confirm the accuracy of the information contained herein through a due diligence review of the books, records, files and documents that constitute reliable sources of the information described herein. Logos are for identification purposes only and may be trademarks of their respective companies. NAI Capital Commercial, Inc. CAL DRE Lic. #02130474



Richard Lee, SIOR

Executive Vice President
909.243.7601
rlee@naicapital.com
CA DRE #01757870

Nicholas Chang, CCIM, SIOR

Executive Vice President
909.243.7614
nchang@naicapital.com
CA DRE #01344844

No warranty, express or implied, is made as to the accuracy of the information contained herein. This information is submitted subject to errors, omissions, change of price, rental or other conditions, withdrawal without notice, and is subject to any special listing conditions imposed by our principals. Cooperating brokers, buyers, tenants and other parties who receive this document should not rely on it, but should use it as a starting point of analysis, and should independently confirm the accuracy of the information contained herein through a due diligence review of the books, records, files and documents that constitute reliable sources of the information described herein. Logos are for identification purposes only and may be trademarks of their respective companies. NAI Capital Commercial, Inc. CAL DRE Lic. #02130474