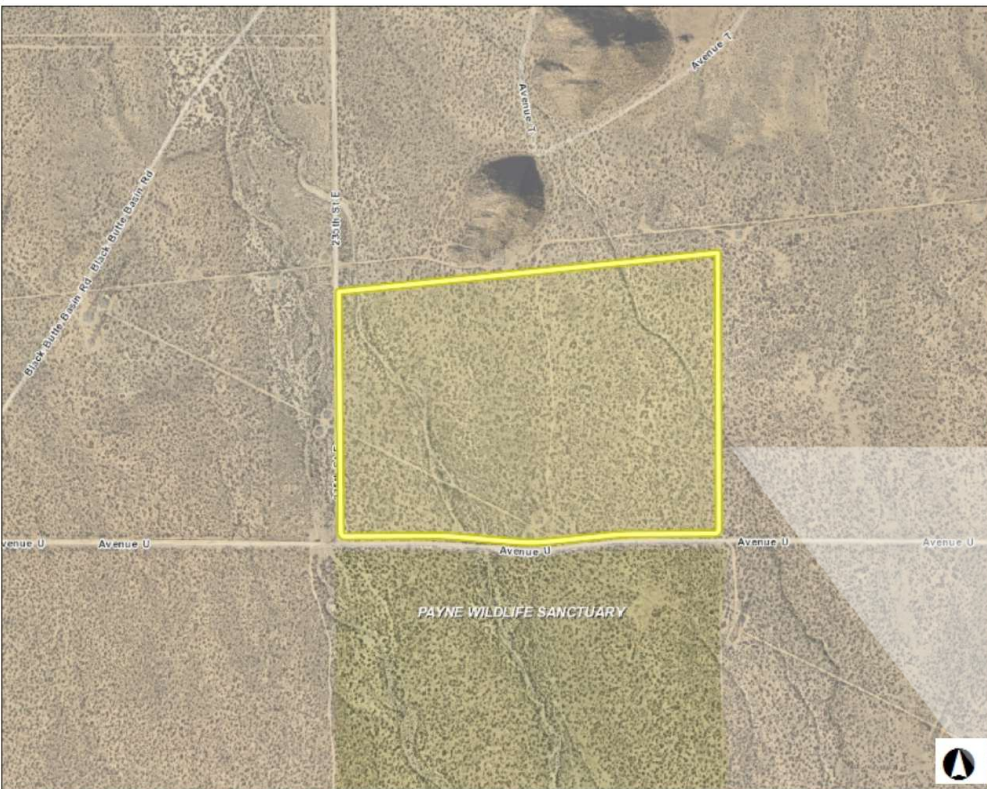




## Los Angeles County GIS Viewer



### Legend

- Recent Sales Parcels
- Commercial / Industrial
  - Condominium
  - Other
  - Multiple Family Residence
  - Single Family Residence
  - Vacant Land

### Notes

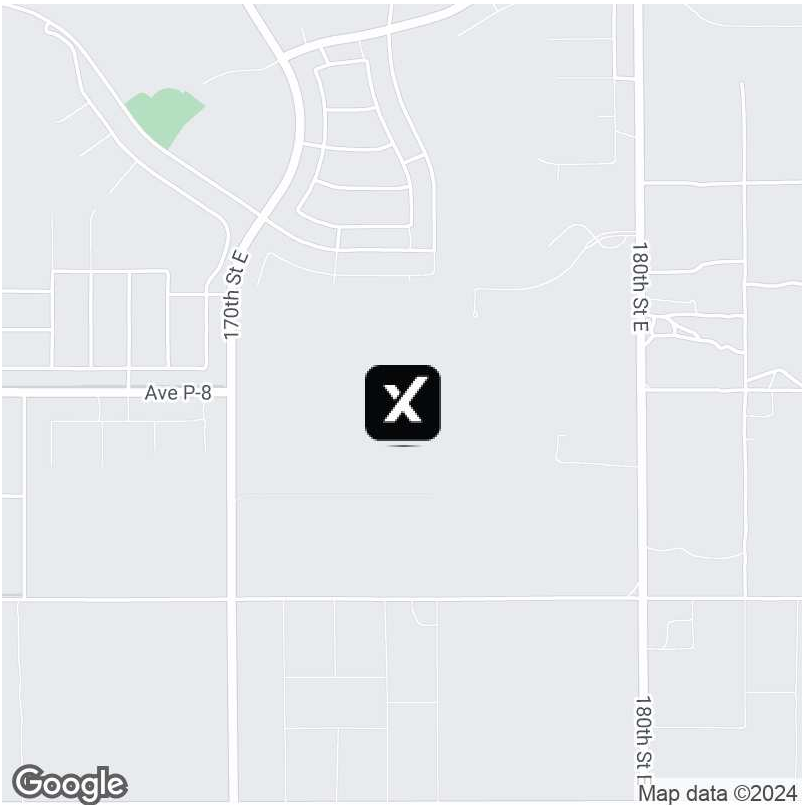
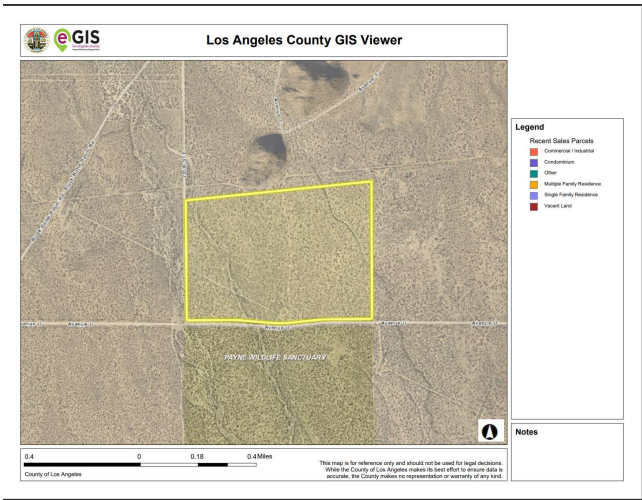
0.4 0 0.18 0.4 Miles

County of Los Angeles

This map is for reference only and should not be used for legal decisions. While the County of Los Angeles makes its best effort to ensure data is accurate, the County makes no representation or warranty of any kind.

# FOR SALE | Executive Summary

Vac Corner Avenue U, Palmdale, CA 93591



## Offering Summary

Sale Price:	Subject To Offer
Available SF:	
Lot Size:	105.08 Acres
Price / Acre:	-
Zoning:	Agricultural

## Property Overview

Vacant Corner Avenue U presents an exceptional investment opportunity for those seeking agricultural-zoned land. Located in the sought-after Palmdale area, this property offers the ideal canvas for a wide range of agricultural endeavors. This parcel is perfectly suited for a land or other investor looking to capitalize on the potential of this untapped area. Whether it's farming, ranching, or other ventures, this property is poised to fulfill the vision of the discerning investor. Don't miss the chance to unlock the full potential of this Palmdale property.

## Property Highlights

- Zoned for Agricultural use
- Ideal for farming or ranching
- Spacious land for potential development
- Convenient location in Palmdale area
- Suitable for land investment
- Proximity to amenities and infrastructure
- Potential for future growth and expansion
- Versatile for various land-based projects

**Maria Ingle**

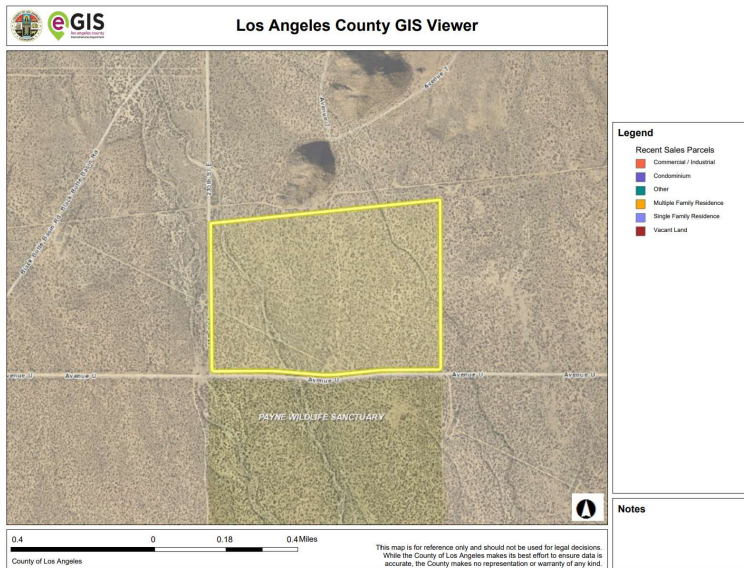
619.586.7937  
maria.ingle@expcommercial.com



eXp Commercial, LLC, its direct and indirect parents and their subsidiaries (together, "We") obtained the information above from sources believed to be reliable, however, We have not verified its accuracy and make no guarantee, warranty or representation, expressed or implied, about such information. The information contained above is submitted subject to the possibility of errors, omissions, price changes, rental or other conditions, prior sale, lease or financing, or withdrawal without notice. Any projections, opinions, assumptions or estimates of the information contained above or provided in connection therewith, either expressed or implied, are for example only, and they may not represent current or future performance of the subject property. You, together with your tax and legal advisors, should conduct your own thorough investigation of the subject property and potential investment.

# FOR SALE | Property Description

Vac Corner Avenue U, Palmdale, CA 93591



## Property Description

Vacant Corner Avenue U presents an exceptional investment opportunity for those seeking agricultural-zoned land. Located in the sought-after Palmdale area, this property offers the ideal canvas for a wide range of agricultural endeavors. This parcel is perfectly suited for a land or other investor looking to capitalize on the potential of this untapped area. Whether it's farming, ranching, or other ventures, this property is poised to fulfill the vision of the discerning investor. Don't miss the chance to unlock the full potential of this Palmdale property.

## Location Description

Cor Avenue U 233 Ste  
Palmdale, CA 93591

Latitude/Longitude 34.530149°/-117.708623°

Survey is needed for property description.

**Maria Ingle**

619.586.7937

maria.ingle@expcommercial.com

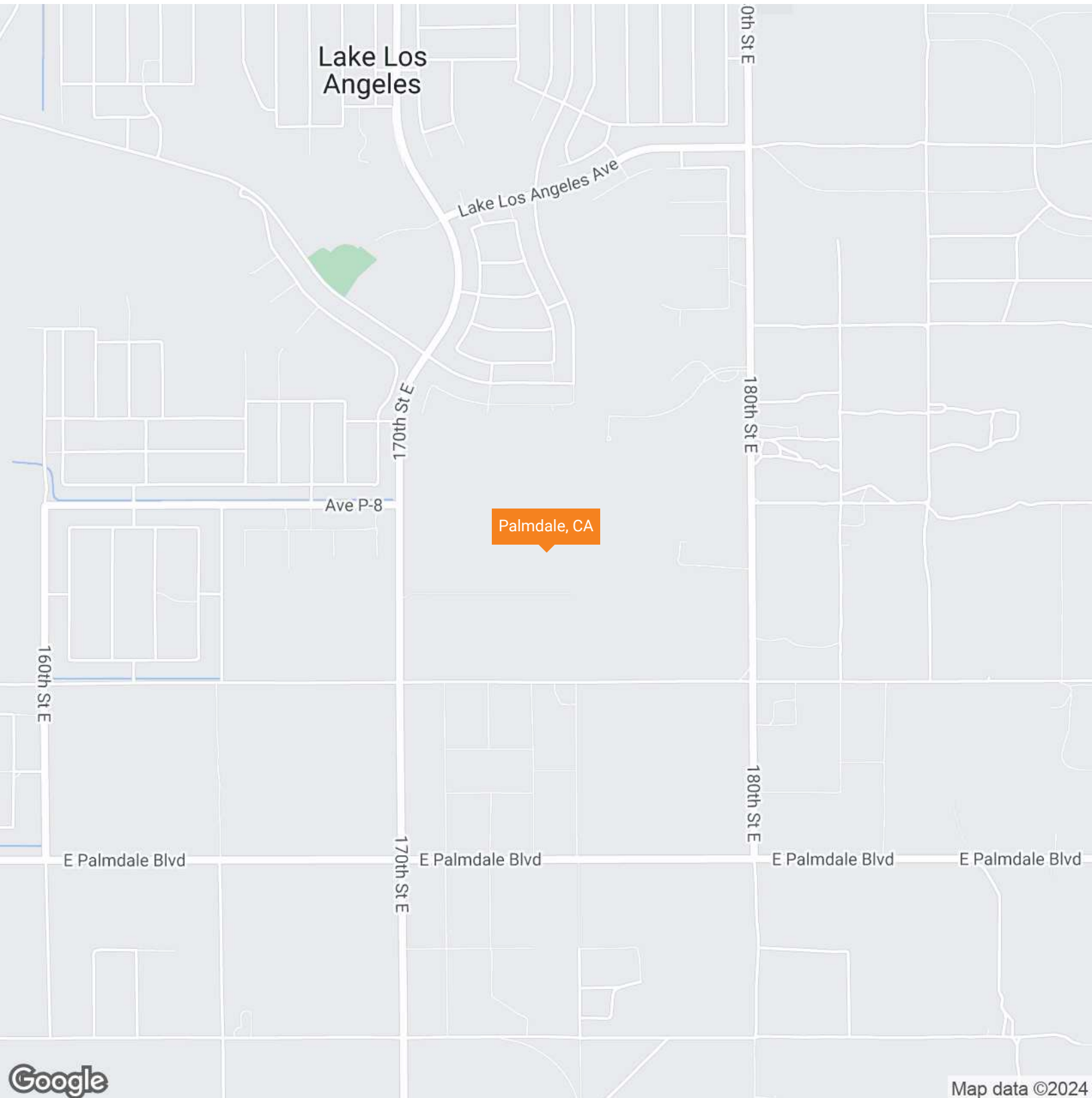


eXp Commercial, LLC, its direct and indirect parents and their subsidiaries (together, "We") obtained the information above from sources believed to be reliable, however, We have not verified its accuracy and make no guarantee, warranty or representation, expressed or implied, about such information. The information contained above is submitted subject to the possibility of errors, omissions, price changes, rental or other conditions, prior sale, lease or financing, or withdrawal without notice. Any projections, opinions, assumptions or estimates of the information contained above or provided in connection therewith, either expressed or implied, are for example only, and they may not represent current or future performance of the subject property. You, together with your tax and legal advisors, should conduct your own thorough investigation of the subject property and potential investment.



# FOR SALE | Regional Map

Vac Corner Avenue U, Palmdale, CA 93591



**Maria Ingle**

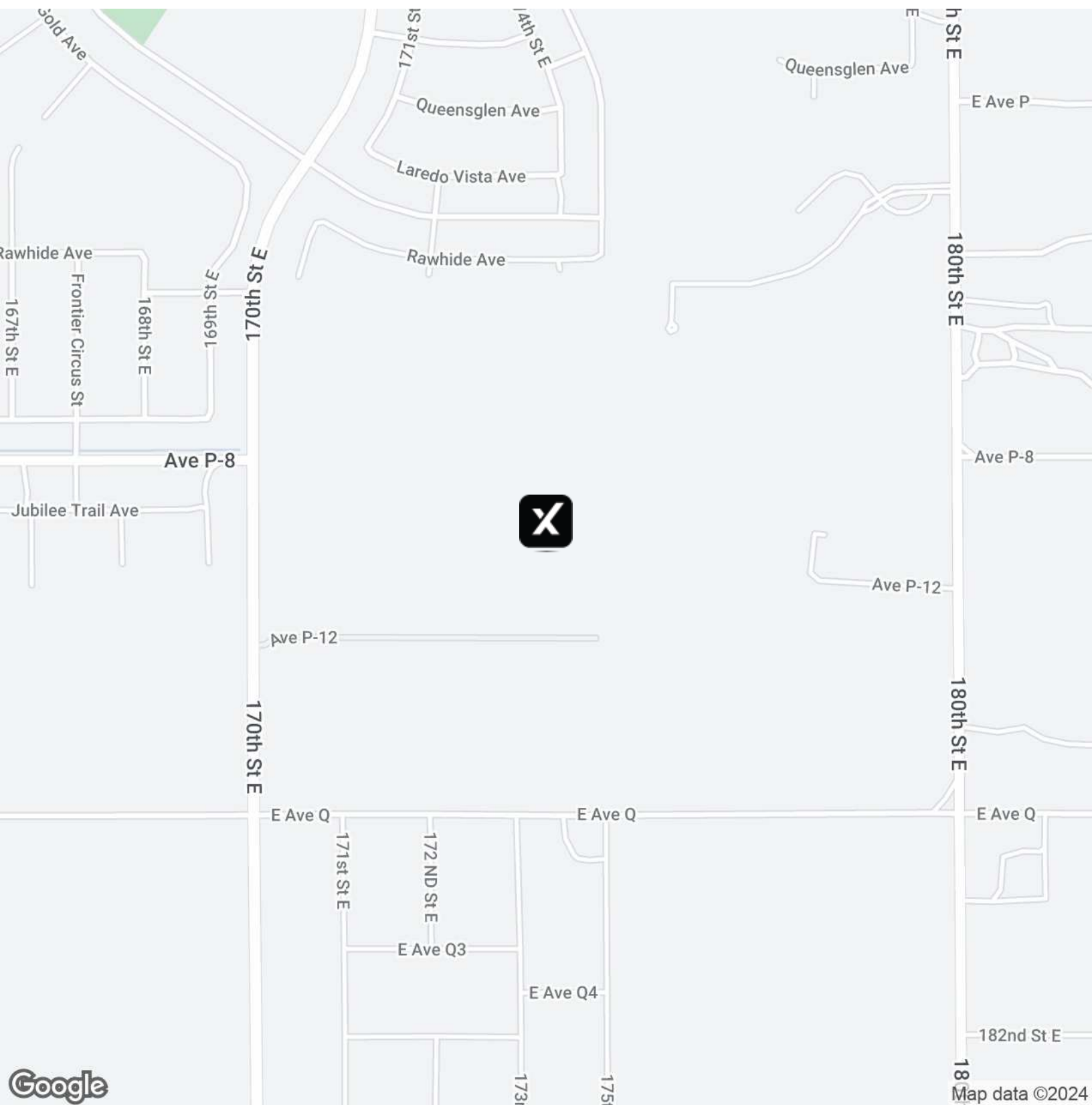
619.586.7937

[maria.ingle@expcommercial.com](mailto:maria.ingle@expcommercial.com)

**exp**<sup>TM</sup>  
COMMERCIAL

eXp Commercial, LLC, its direct and indirect parents and their subsidiaries (together, "We") obtained the information above from sources believed to be reliable, however, We have not verified its accuracy and make no guarantee, warranty or representation, expressed or implied, about such information. The information contained above is submitted subject to the possibility of errors, omissions, price changes, rental or other conditions, prior sale, lease or financing, or withdrawal without notice. Any projections, opinions, assumptions or estimates of the information contained above or provided in connection therewith, either expressed or implied, are for example only, and they may not represent current or future performance of the subject property. You, together with your tax and legal advisors, should conduct your own thorough investigation of the subject property and potential investment.

Vac Corner Avenue U, Palmdale, CA 93591



## Maria Ingle

619.586.7937

maria.ingle@expcommercial.com



Ex Commercial, LLC, its direct and indirect parents and their subsidiaries (together, "We") obtained the information above from sources believed to be reliable, however, We have not verified its accuracy and make no guarantee, warranty or representation, expressed or implied, about such information. The information contained above is submitted subject to the possibility of errors, omissions, price changes, rental or other conditions, prior sale, lease or financing, or withdrawal without notice. Any projections, opinions, assumptions or estimates of the information contained above or provided in connection therewith, either expressed or implied, are for example only, and they may not represent current or future performance of the subject property. You, together with your tax and legal advisors, should conduct your own thorough investigation of the subject property and potential investment.



# FOR SALE | Aerial Map

Vac Corner Avenue U, Palmdale, CA 93591



Google Imagery ©2024 Airbus, CNES / Airbus, Maxar Technologies, U.S. Geological Survey, USDA/FPAC/GEO

**Maria Ingle**

619.586.7937

[maria.ingle@expcommercial.com](mailto:maria.ingle@expcommercial.com)

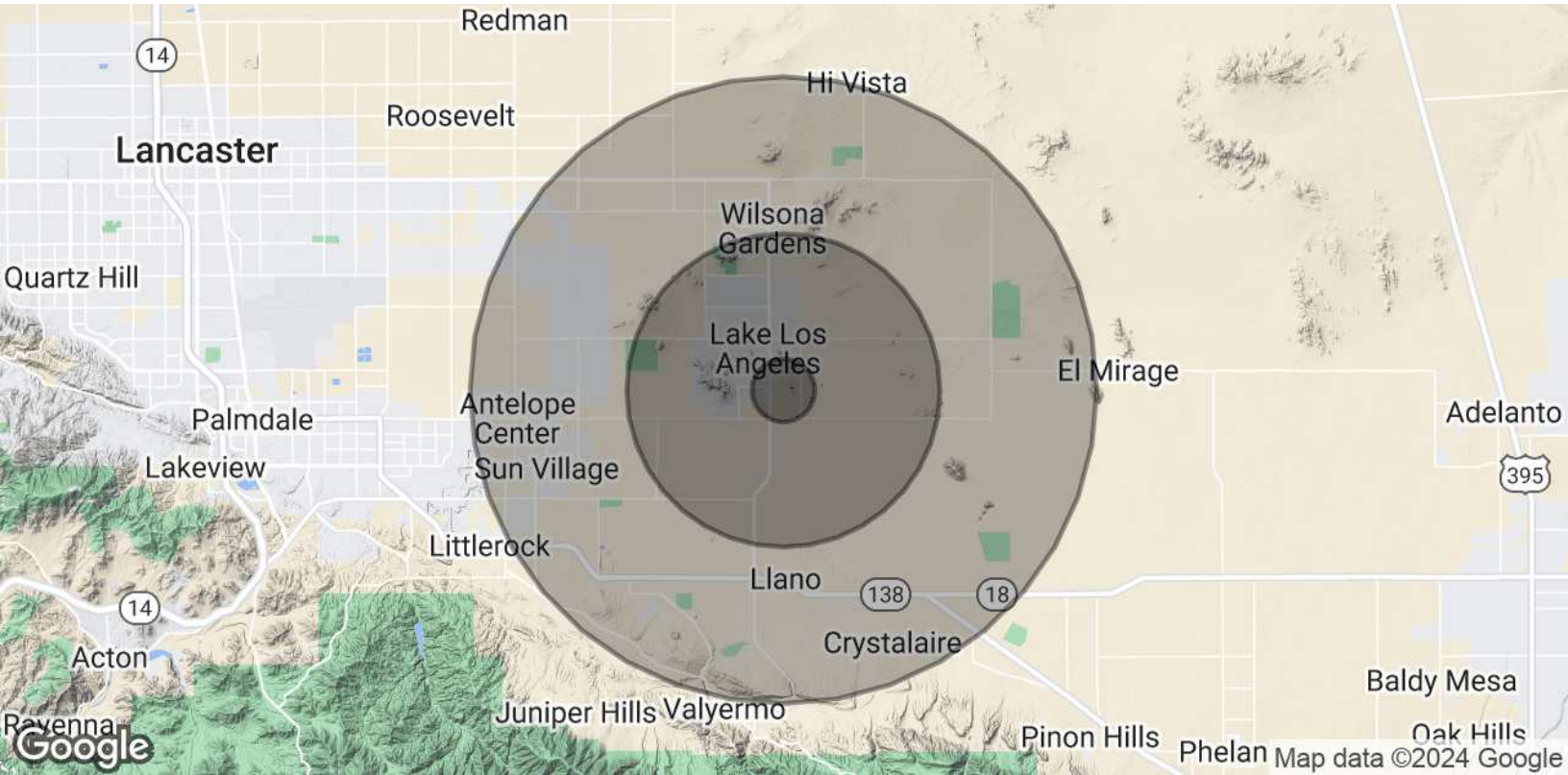
**exp**<sup>TM</sup>  
COMMERCIAL

eXp Commercial, LLC, its direct and indirect parents and their subsidiaries (together, "We") obtained the information above from sources believed to be reliable, however, We have not verified its accuracy and make no guarantee, warranty or representation, expressed or implied, about such information. The information contained above is submitted subject to the possibility of errors, omissions, price changes, rental or other conditions, prior sale, lease or financing, or withdrawal without notice. Any projections, opinions, assumptions or estimates of the information contained above or provided in connection therewith, either expressed or implied, are for example only, and they may not represent current or future performance of the subject property. You, together with your tax and legal advisors, should conduct your own thorough investigation of the subject property and potential investment.



# FOR SALE | Demographics Map & Report

Vac Corner Avenue U, Palmdale, CA 93591



Population	1 Mile	5 Miles	10 Miles
Total Population	26	869	23,461
Average Age	51.4	47.4	33.2
Average Age (Male)	49.2	47.2	33.8
Average Age (Female)	56.3	46.6	32.7

Households & Income	1 Mile	5 Miles	10 Miles
Total Households	18	496	7,482
# of Persons per HH	1.4	1.8	3.1
Average HH Income	\$36,650	\$42,009	\$54,017
Average House Value	\$187,781	\$220,042	\$226,337

\* Demographic data derived from 2020 ACS - US Census

Maria Ingle  
619.586.7937  
maria.ingle@expcommercial.com



eXp Commercial, LLC, its direct and indirect parents and their subsidiaries (together, "We") obtained the information above from sources believed to be reliable, however, We have not verified its accuracy and make no guarantee, warranty or representation, expressed or implied, about such information. The information contained above is submitted subject to the possibility of errors, omissions, price changes, rental or other conditions, prior sale, lease or financing, or withdrawal without notice. Any projections, opinions, assumptions or estimates of the information contained above or provided in connection therewith, either expressed or implied, are for example only, and they may not represent current or future performance of the subject property. You, together with your tax and legal advisors, should conduct your own thorough investigation of the subject property and potential investment.