

OFFICE FOR LEASE

521 E MAIN AVE | BISMARCK, ND





PROPERTY OVERVIEW

This second floor space is well designed with lots of character. Two on-site parking spaces included and (3) city parking ramps within 1 block of property. Landlord pays all operating expenses, except interior janitorial. Landlord open to dividing or remodeling space.

*Disclosure: Agent has ownership interest in this property.

*Lease application may be required.

PROPERTY HIGHLIGHTS

- (2) Private offices and cubicle areas that could be offices
- Kitchen/breakroom/lab area
- In-suite conference room as well as shared building conference room
- Storage cabinets with additional basement storage
- 3 High-speed internet service providers in building
- (2) On-site parking spaces included
- Options for smaller spaces available

OFFERING SUMMARY

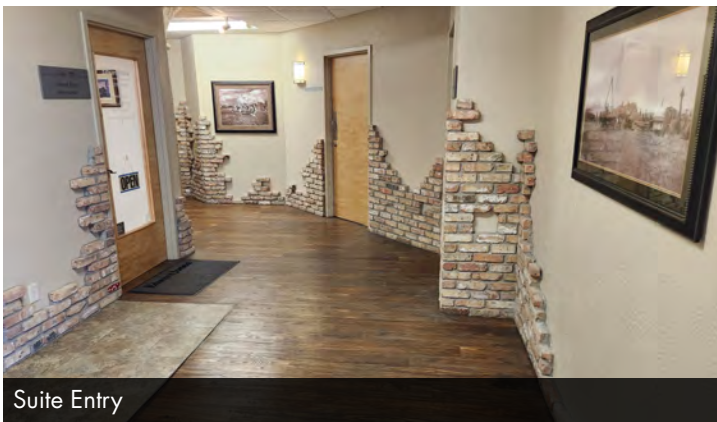
Lease Rate:	\$4,413.00 per month (Full Service)
Available SF:	3,115 SF
Year Built:	1912
Renovated:	2009
Zoning:	DC
Tenant Responsibility:	Inside Janitorial
Landlord Responsibility:	Landlord pays for all operating expenses including utilities.



Building Shared Conference



In-office Conference



Suite Entry



Private Office



File Room



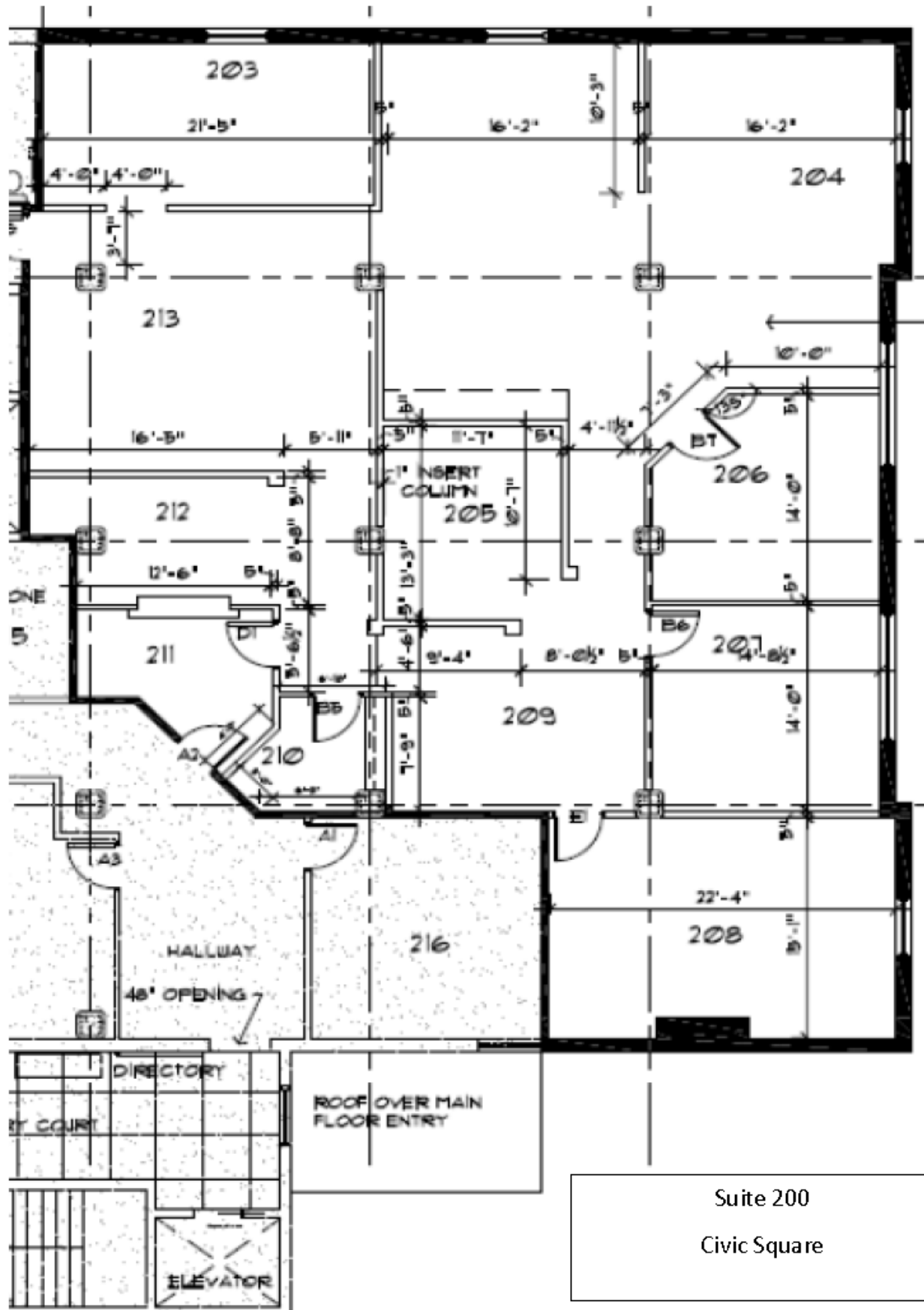
Open Area



Break Room

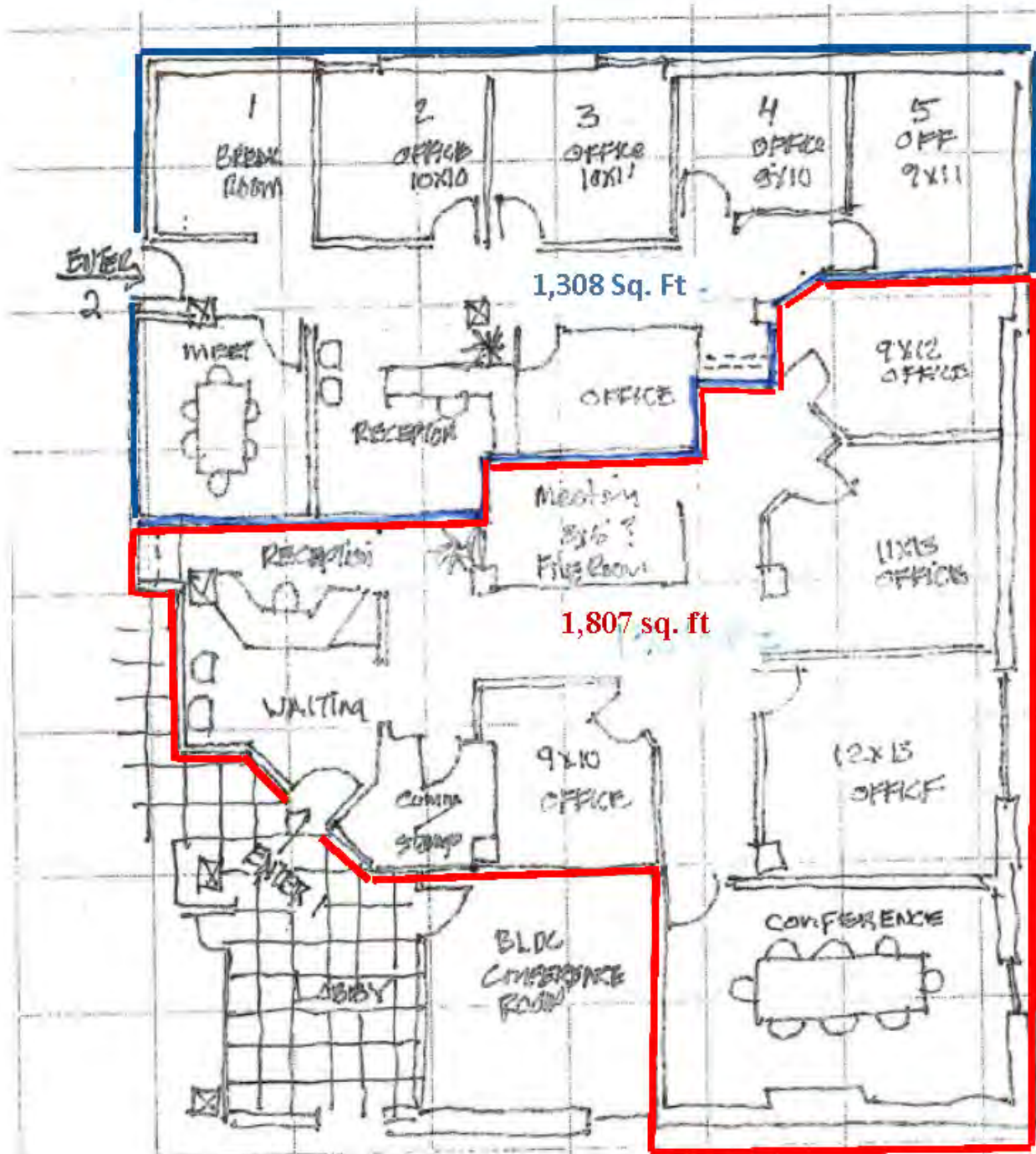


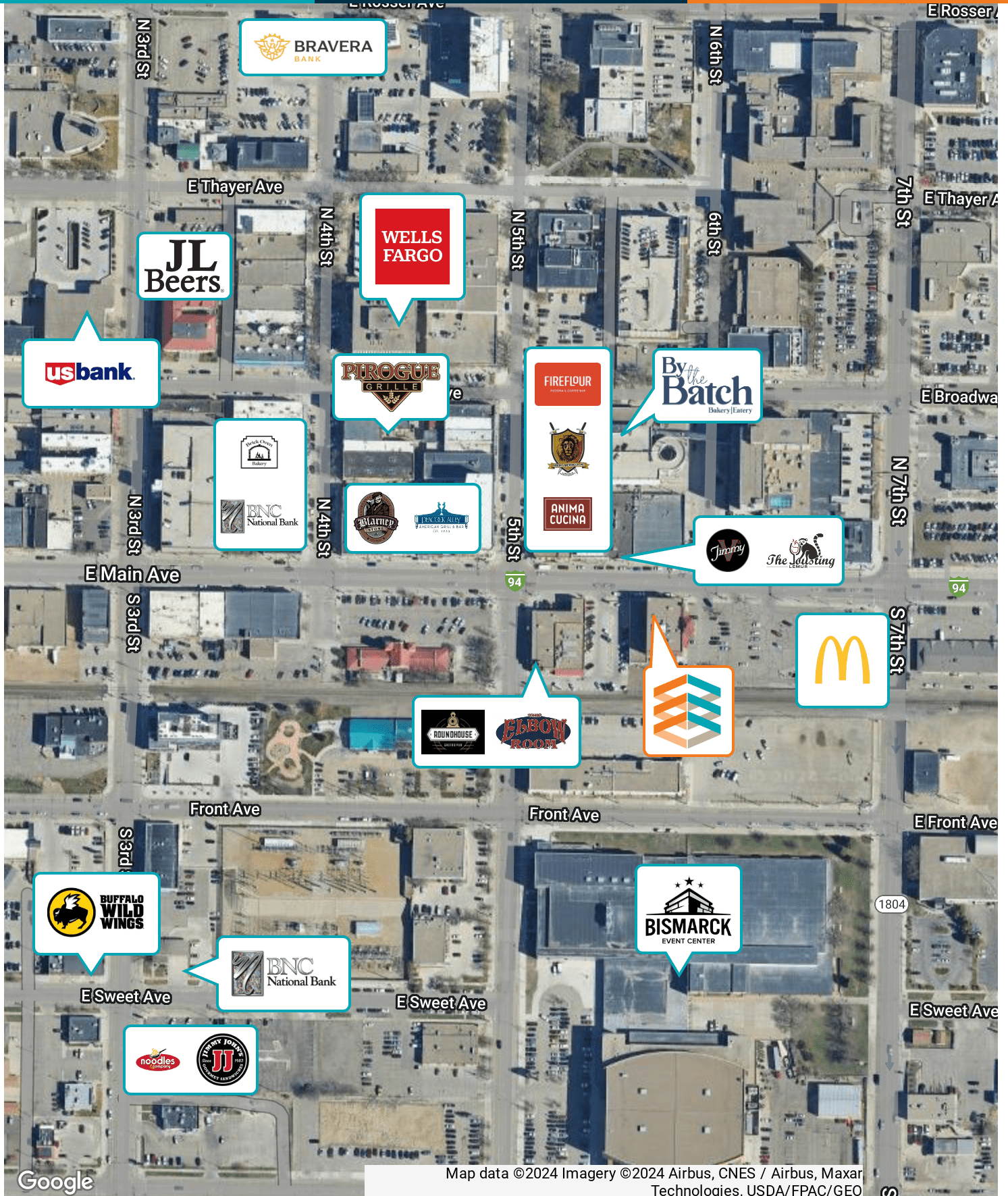
Supply Storage





Civic Square
Suite 200
Concept Plan - Dividing the space into 2 spaces
Other options available





Google

Map data ©2024 Imagery ©2024 Airbus, CNES / Airbus, Maxar
Technologies, USDA/FPAC/GEO

DOWNTOWN BISMARCK PARKING

MONTHLY AND HOURLY RATES

701-222-8954 FOR MORE INFO

THIRD & MAIN RAMP

- Monthly Rent Rates:
- Level 2 - Reserved \$75.00
- Covered Parking \$64.00
- Roof-top Parking \$40.00
- Nights: 4 PM to 4 AM \$26.00
- Hourly: \$1.50/hr or \$8/day



PARKADE: 6TH & BROADWAY

- Monthly Rent Rates:
- Covered Parking \$64.00
- Roof-top Parking \$40.00
- Nights: 4 PM to 4 AM \$26.00
- Hourly: \$1.50/hr or \$8/day



GALLERIA: 7TH & BROADWAY

- Monthly rent rate is \$64.00
- Hourly: \$1.50/hr or \$8/day

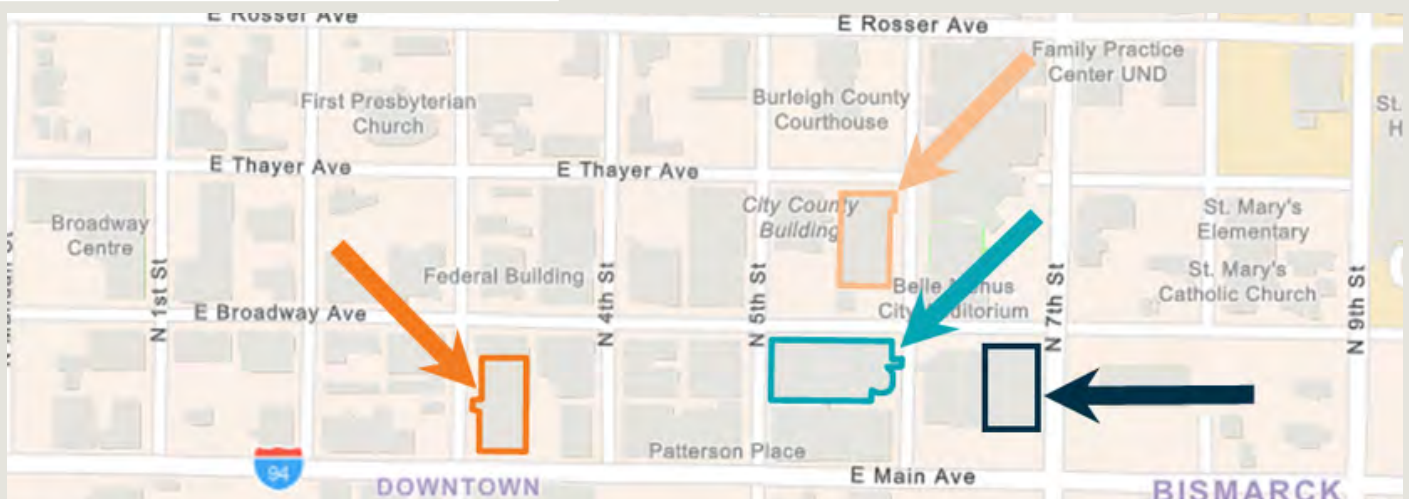


SIXTH & THAYER RAMP

- Monthly Rent Rates:
- Covered Parking \$64.00
- Roof-top Parking \$40.00
- Hourly: \$1.50/hr or \$8/day



Please visit the Parkade office, 114 N. 6th Street, to sign up for monthly parking. www.bismarckparkingauthority.com





CRA

COMMERCIAL
REAL ESTATE
ADVISORS™

BUILDING RELATIONSHIPS.
BUILDING THE COMMUNITY.™



CHUCK HUBER, COMMERCIAL REALTOR®

Advisor | Broker Associate
701.391.9575
chuck@thecragroup.com



KRISTYN STECKLER, COMMERCIAL REALTOR®

Partner | Broker
701.527.0138
kristyn@thecragroup.com



@THECRAGROUP

Although information has been obtained from sources deemed reliable, neither Owner nor CRA makes any guarantees, warranties, or representations, express or implied, as to the completeness or accuracy as to the information contained herein. You should conduct a careful, independent investigation of the property and verify all information. Any reliance on this information is solely at your own risk. The Property may be withdrawn without notice. Neither Owner nor CRA accepts any liability for any loss or damage suffered by any party resulting from reliance on this information. Photos, logos, and other images herein are the property of their respective owners. Use of these images without the express written consent of the owner is prohibited.