

# 212 BUILDING

212 SOUTHEAST 8TH STREET, FORT LAUDERDALE, FL 33316

## PROPERTY SUMMARY



### PROPERTY DESCRIPTION

Free standing office building located between SE 3rd Avenue and S. Andrews Avenue along SE 8th Street. The building is 3,500 +/- SF and can be divided into 1,750 +/- on each side. The east side has private offices, a conference room, a kitchenette, reception area, and an admin area. The west side has reception area, admin work area, two private offices, a large work room, a kitchenette, and a copier/file room. The entire building or one half of the building can be leased. Available immediately.

### PROPERTY HIGHLIGHTS

- Free standing office building for lease in Downtown Fort Lauderdale
- Ideal for professionals such as lawyers, accountants, or other businesses.
- Free abundant surface parking.
- Available immediately.
- Building signage available

### OFFERING SUMMARY

<b>Lease Rate:</b>	\$40.00 SF/yr (NNN)
<b>Available SF:</b>	1,750 - 3,500 SF
<b>Lot Size:</b>	14,000 SF
<b>Building Size:</b>	3,500 SF

DEMOGRAPHICS	0.25 MILES	0.5 MILES	1 MILE
<b>Total Households</b>	1,020	3,115	11,366
<b>Total Population</b>	2,449	6,386	18,555
<b>Average HH Income</b>	\$106,455	\$118,617	\$105,354

### JUDITH (JUDY) A. DOLAN

Senior Vice President  
Direct: 954.299.7337 | Cell: 954.295.2676  
jdolan@levyrai.com

### JOSH LEVY

Chief Operating Officer  
954.491.5505  
josh@levyrai.com





# 212 BUILDING

212 SOUTHEAST 8TH STREET, FORT LAUDERDALE, FL 33316

## INTERIOR PHOTOS



### JUDITH (JUDY) A. DOLAN

Senior Vice President  
Direct: 954.299.7337 | Cell: 954.295.2676  
jdolan@levyrai.com

### JOSH LEVY

Chief Operating Officer  
954.491.5505  
josh@levyrai.com

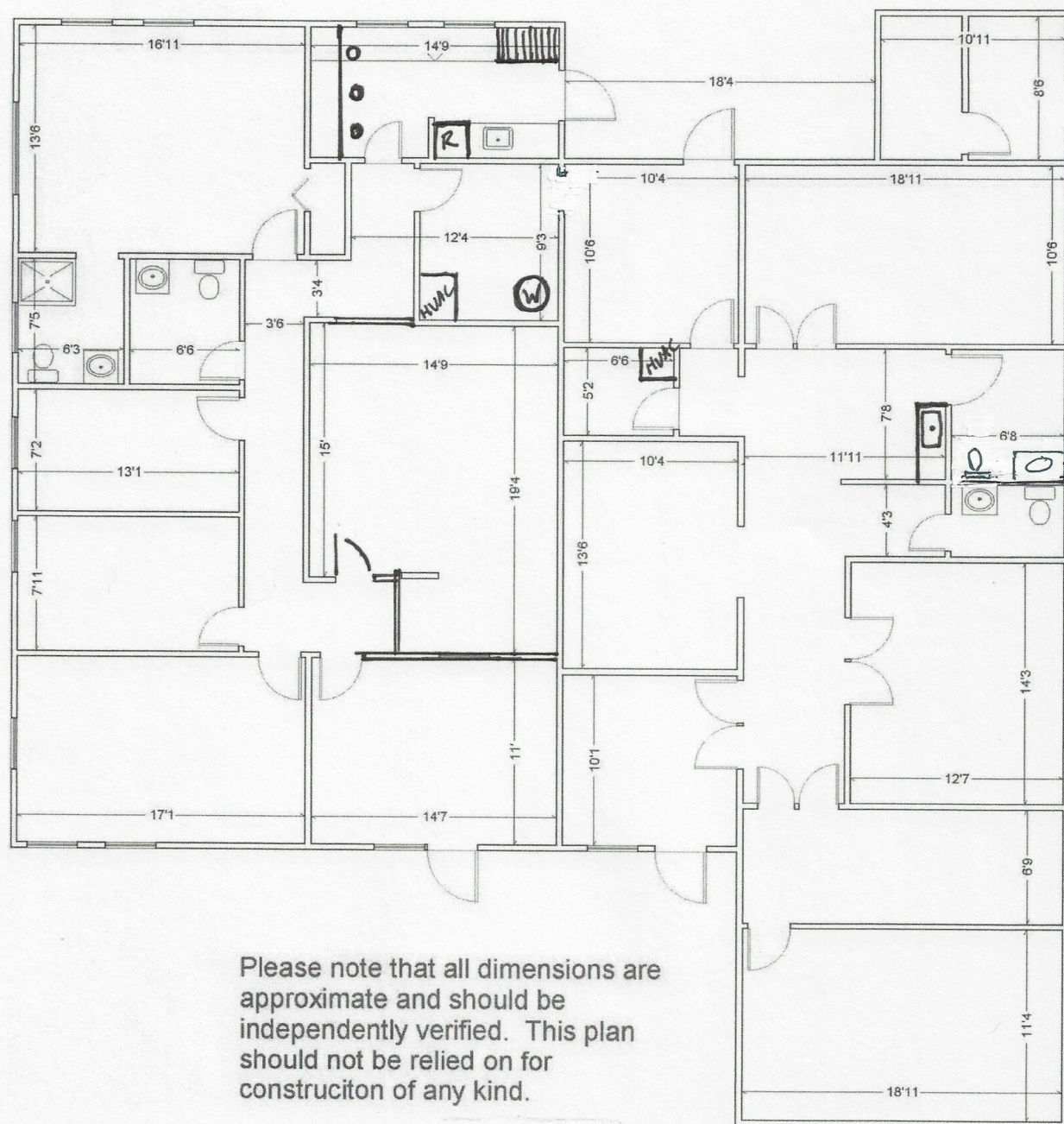




# 212 BUILDING

212 SOUTHEAST 8TH STREET, FORT LAUDERDALE, FL 33316

## FLOOR PLAN



### JUDITH (JUDY) A. DOLAN

Senior Vice President  
Direct: 954.299.7337 | Cell: 954.295.2676  
jdolan@levyrai.com

### JOSH LEVY

Chief Operating Officer  
954.491.5505  
josh@levyrai.com

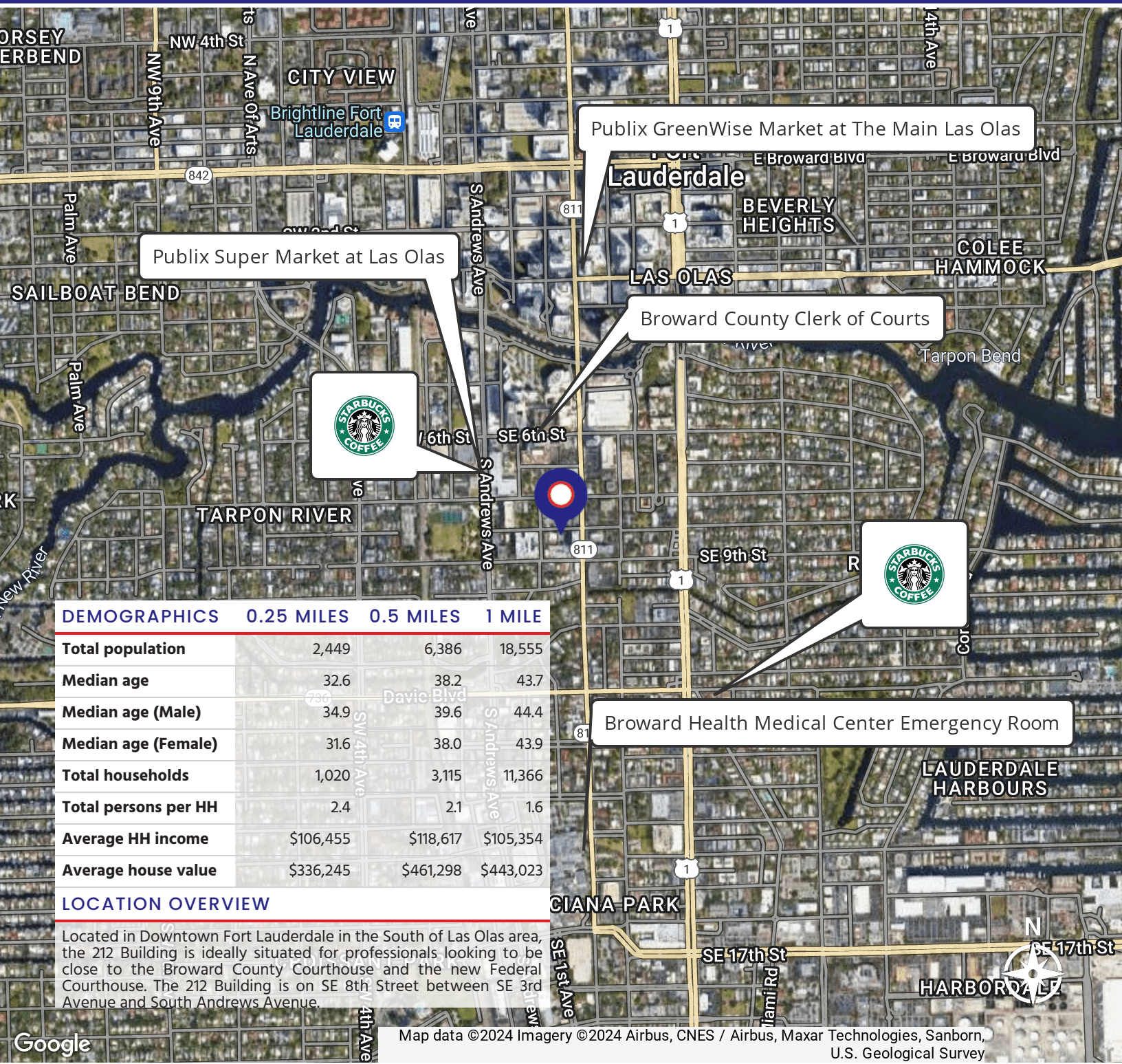




# 212 BUILDING

212 SOUTHEAST 8TH STREET, FORT LAUDERDALE, FL 33316

## LOCATION MAP



### JUDITH (JUDY) A. DOLAN

Senior Vice President  
Direct: 954.299.7337 | Cell: 954.295.2676  
jdolan@levyrai.com

### JOSH LEVY

Chief Operating Officer  
954.491.5505  
josh@levyrai.com

