

LAND FOR SALE  
APRIL 2024

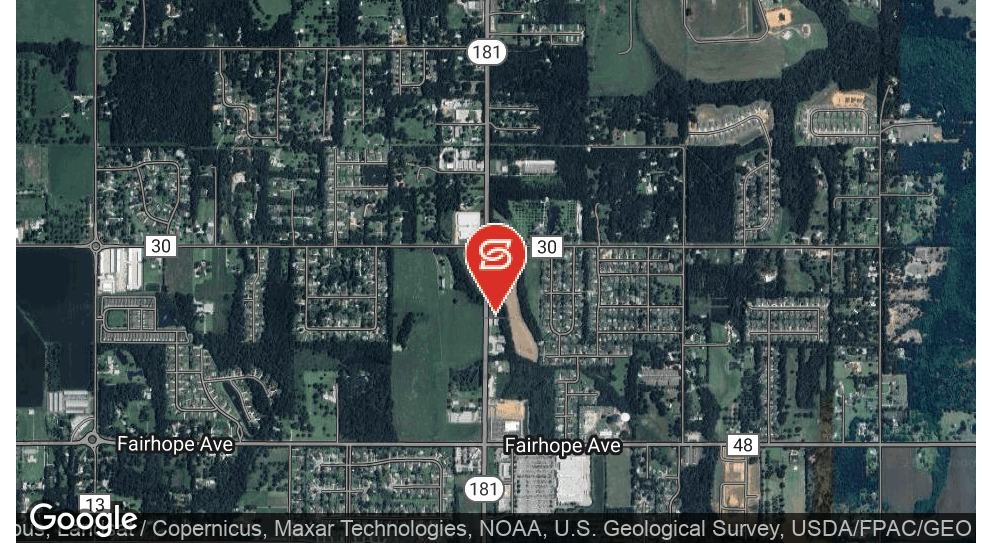
# RENFROE/HOLMES PECAN

20800 STATE HWY 181  
FAIRHOPE, AL

**stirling**







### OFFERING SUMMARY

Sale Price:	\$697,000
Lot Size:	2.002 Acres
Price / Acre:	\$348,152
Zoning:	com/res
Market:	South AL

### PROPERTY OVERVIEW

20800 St Hwy 181 is just north of Fairhope Ave on the East side. One half mile from a new Aldi and a Walmart Superstore. Hwy 181 is the direct line north to I-10 and south to Hwy 98. This property is 2 acres with a 4700 sqft building for storing pecans, etc, with a small office. Property is leased from the Fairhope Single Tax Corporation.





**JACK WILLIAMS**

850.698.5346

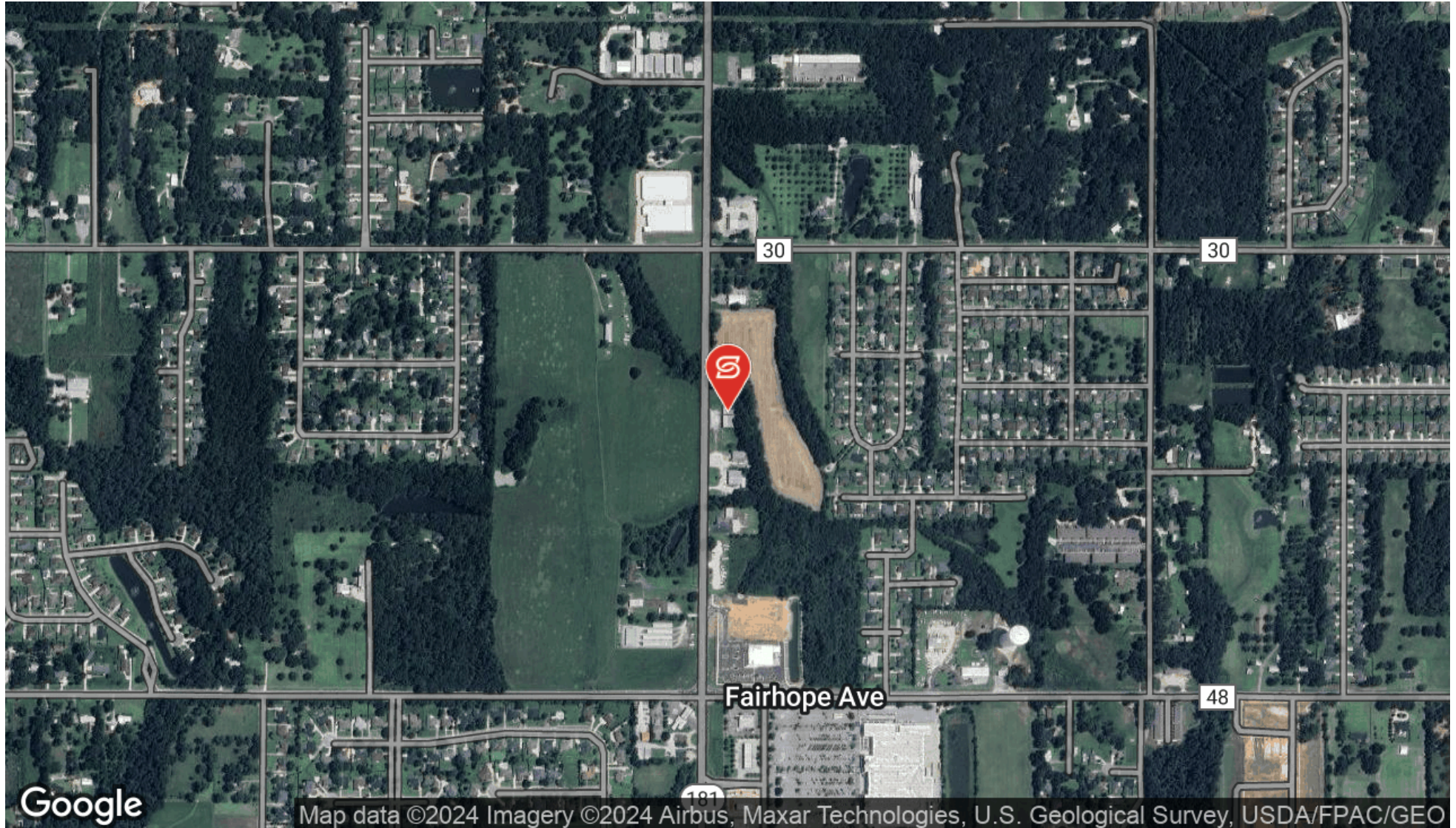
jwilliams@stirlingprop.com

STIRLINGPROPERTIES.COM / f t i in

Member of **/3**  
RETAIL BROKERS NETWORK

The foregoing is solely for information purposes and is subject to change without notice. Stirling Properties makes no representations or warranties regarding the properties or information herein including but not Member of limited to any and all images pertaining to these properties. It is the obligation of each purchaser/lessee to investigate the condition and attributes of the properties and to verify the accuracy of the foregoing information to the extent such purchaser/lessee deems necessary. Also subject to errors, omissions, changes in terms and conditions, prior sale, lease or withdrawal, without notice.





**JACK WILLIAMS**

850.698.5346

jwilliams@stirlingprop.com

STIRLINGPROPERTIES.COM / f t i in

Member of /4  
RETAIL BROKERS NETWORK

The foregoing is solely for information purposes and is subject to change without notice. Stirling Properties makes no representations or warranties regarding the properties or information herein including but not Member of limited to any and all images pertaining to these properties. It is the obligation of each purchaser/lessee to investigate the condition and attributes of the properties and to verify the accuracy of the foregoing information to the extent such purchaser/lessee deems necessary. Also subject to errors, omissions, changes in terms and conditions, prior sale, lease or withdrawal, without notice.

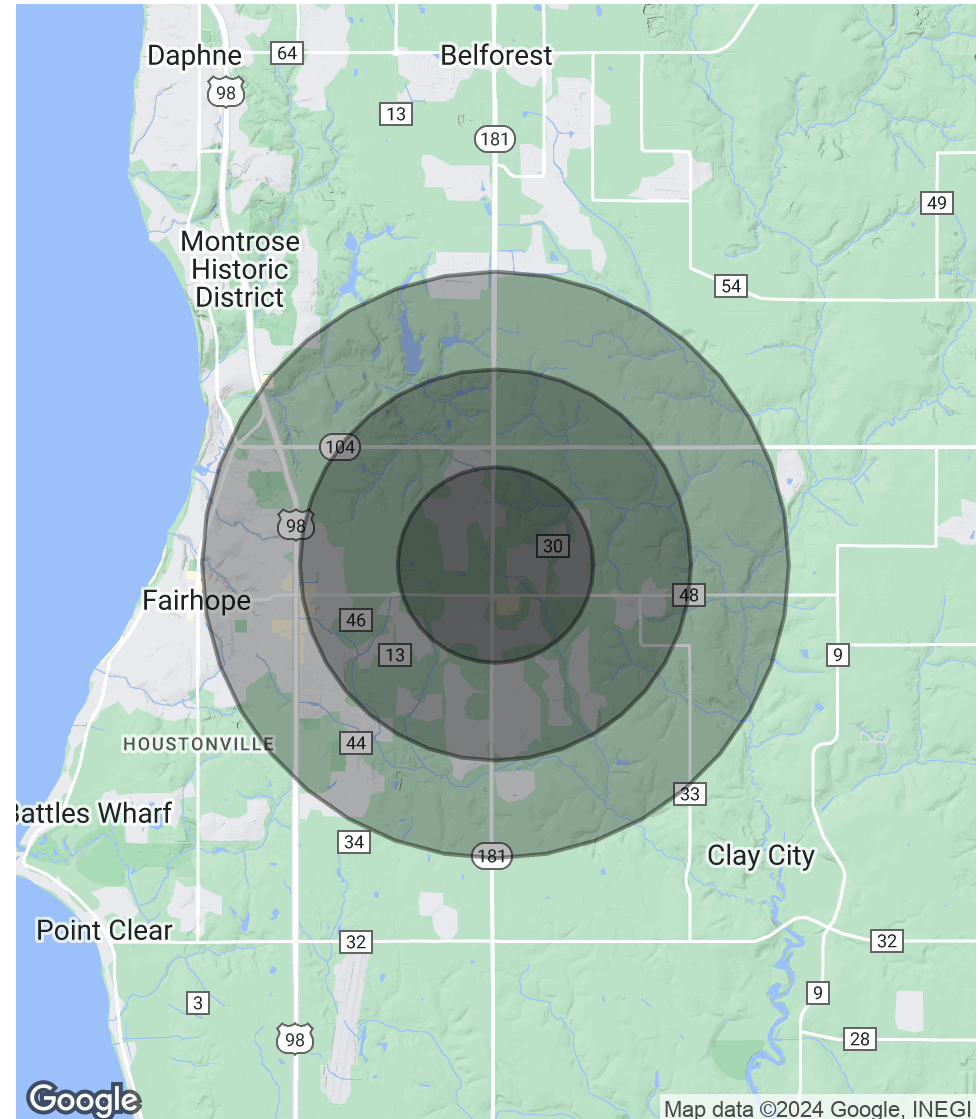


POPULATION	1 MILE	2 MILES	3 MILES
Total Population	2,596	10,802	20,856
Average Age	38.6	40.6	41.5
Average Age (Male)	37.9	38.9	39.8
Average Age (Female)	39.6	42.0	42.9

HOUSEHOLDS & INCOME	1 MILE	2 MILES	3 MILES
Total Households	944	4,240	8,589
# of Persons per HH	2.8	2.5	2.4
Average HH Income	\$93,281	\$96,768	\$94,095
Average House Value	\$248,107	\$276,201	\$294,877

\* Demographic data derived from 2020 ACS - US Census



**JACK WILLIAMS**

850.698.5346

jwilliams@stirlingprop.com

STIRLINGPROPERTIES.COM / f t i in

Member of **/5**  
RETAIL BROKERS NETWORK

The foregoing is solely for information purposes and is subject to change without notice. Stirling Properties makes no representations or warranties regarding the properties or information herein including but not limited to any and all images pertaining to these properties. It is the obligation of each purchaser/lessee to investigate the condition and attributes of the properties and to verify the accuracy of the foregoing information to the extent such purchaser/lessee deems necessary. Also subject to errors, omissions, changes in terms and conditions, prior sale, lease or withdrawal, without notice.