

**7000 HOLSTEIN AVENUE**  
PHILADELPHIA, PA

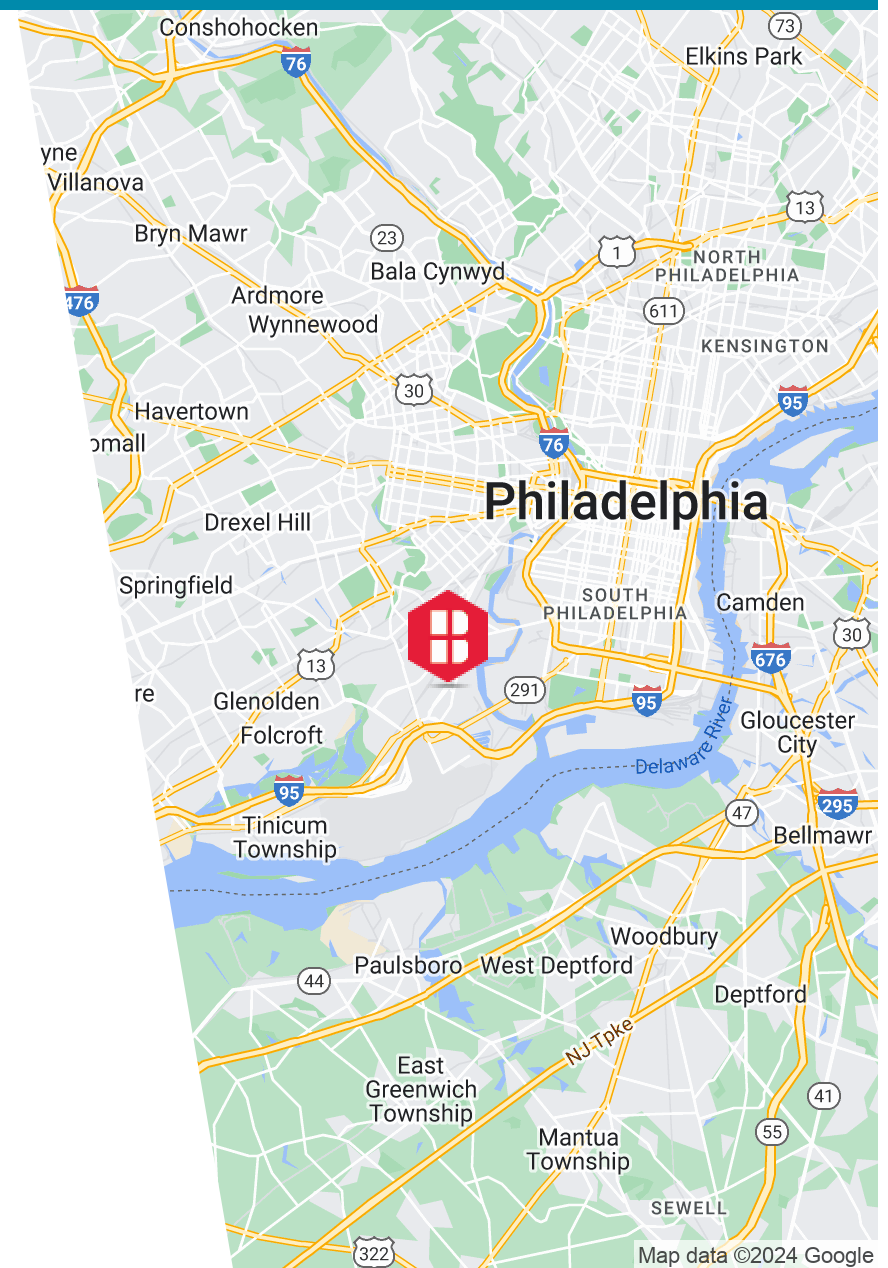
AVAILABLE FOR LEASE  
**INDUSTRIAL PROPERTY**

4,500 SF

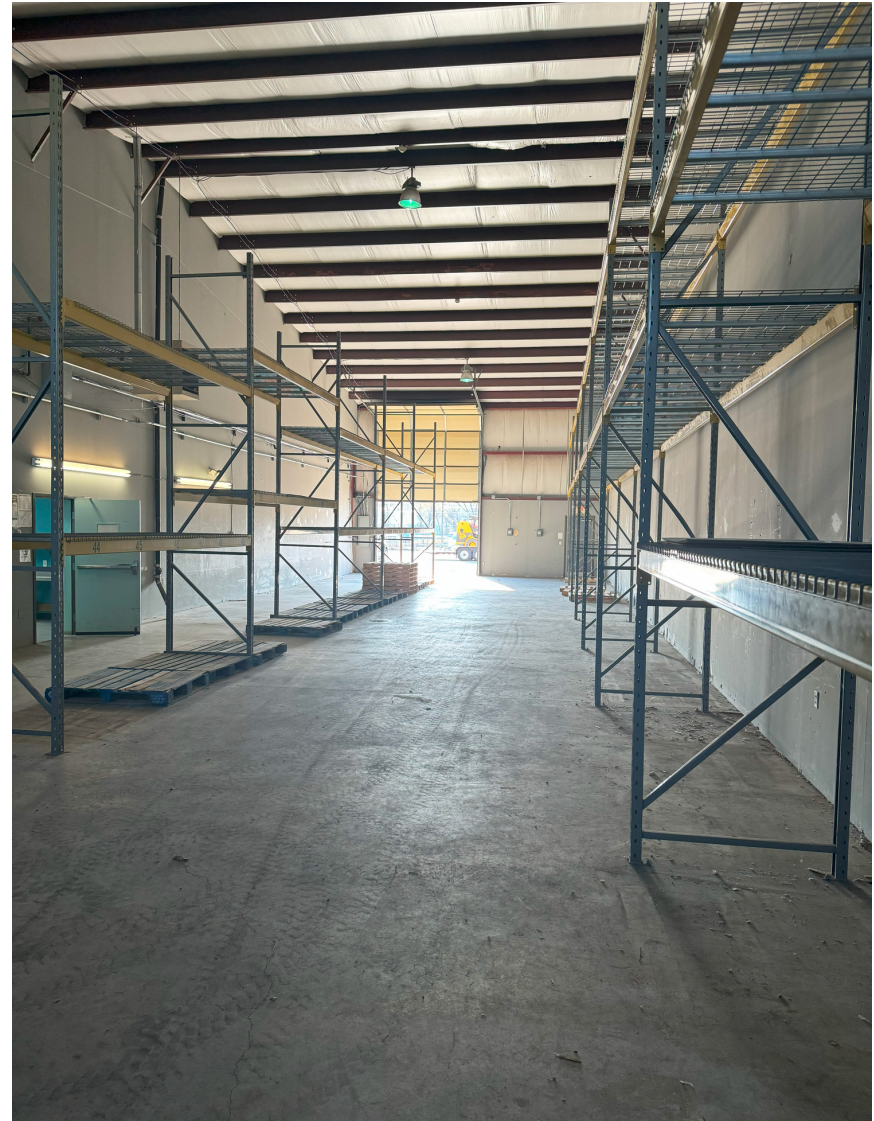


## PROPERTY HIGHLIGHTS

- Total Space: 4,500 SF (Warehouse 3,750 SF and Office 750 SF)
- 20'-25' Clear Height
- One (1) extra large 14' x 14' drive-in door
- Office area has Private offices and break rooms
- Ample parking available
- Zoned I2 - Medium Industrial
- Easy access to I-95, I-76, Philadelphia International Airport and the Navy Yard. Septa stops for buses 37 & 68 are located just outside the property



## ADDITIONAL PHOTOS



# CONTACT



**Christopher Pennington**  
Partner & Senior Vice President  
**215.448.6053**  
cpennington@binswanger.com



**Mike Pennington**  
Vice President  
**215.448.6091**  
mpennington@binswanger.com



Three Logan Square  
1717 Arch Street, Suite 5100  
Philadelphia, PA 19103  
Phone: 215.448.6000  
binswanger.com

The information contained herein is from sources deemed reliable, but no warranty or representation is made as to the accuracy thereof and no liability may be imposed.