



## 2106 E. Industrial

Wichita, Kansas 67216

### Property Highlights

- 11,175 SF Office/Warehouse Building  
- 2,925 SF Office / 8,250 SF Warehouse
- Located near the intersection of Hydraulic & Industrial
- Convenient Access to I-135 and K-15
- Lot Size: 0.58 Acres
- Zoning - Light Industrial
- One 10'x10' Dock Door / One 9'x10' Drive-in Door
- Ceiling Height: Approx. 14'
- Lighting: LED in Offices, T8 in Warehouse
- Electric Service: 1,000 Amp, 3 phase, 480-volt
- Lease Rate: \$5,199/month Industrial Gross, which includes taxes & insurance



### For More Information

**Scott Salome, SIOR**

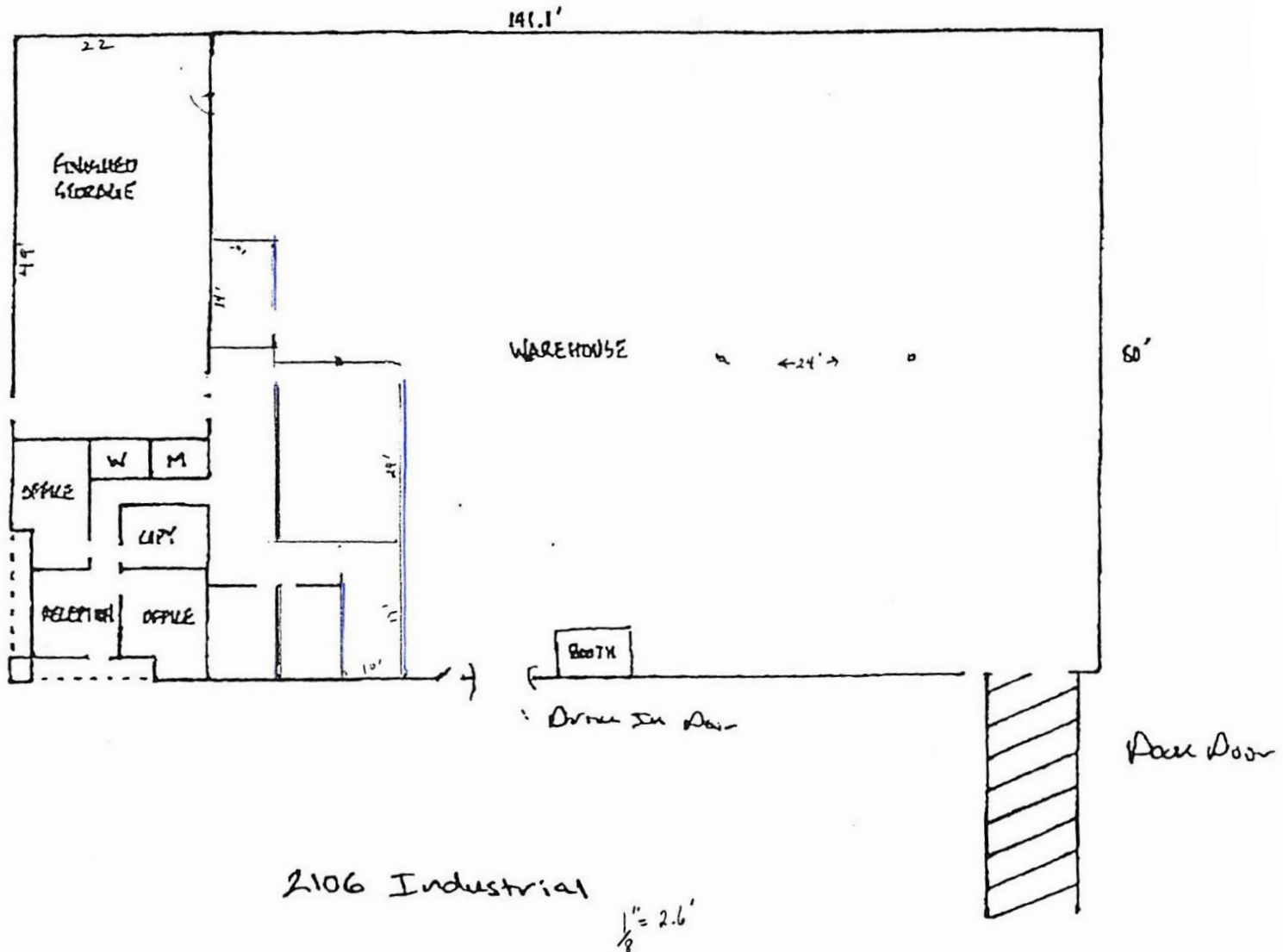
O: 316 847 4903

ssalome@naimartens.com









2106 Industrial

1" = 2.6'