

RETAIL PROPERTY FOR LEASE

34761 EMERALD COAST PARKWAY

34761 EMERALD COAST
PARKWAY
DESTIN, FL

stirling





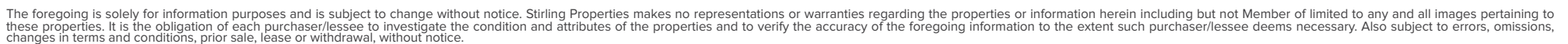
OFFERING SUMMARY

Lease Rate:	\$35.00 SF/yr (NNN)
Building Size:	12,414 SF
Available SF:	4,340 SF

PROPERTY OVERVIEW

Beck Partners is pleased to offer for lease this outstanding retail space available for lease directly on Highway 98 in Destin, FL. The center has excellent visibility and access, with over 55,000 vehicles per day. This multi-tenant strip center is occupied by three great national co-tenants; Sleep Number, Curaleaf, and Five Guys.

The property is in the main retail corridor, surrounded by national retailers and restaurants. The center is also located across from Plantation Commons shopping center, which is home to Fresh Market, Home Depot, Marshalls, HomeGoods and the Kelly Plantation neighborhood, a premier residential golf community.





SHAWN MAXEY

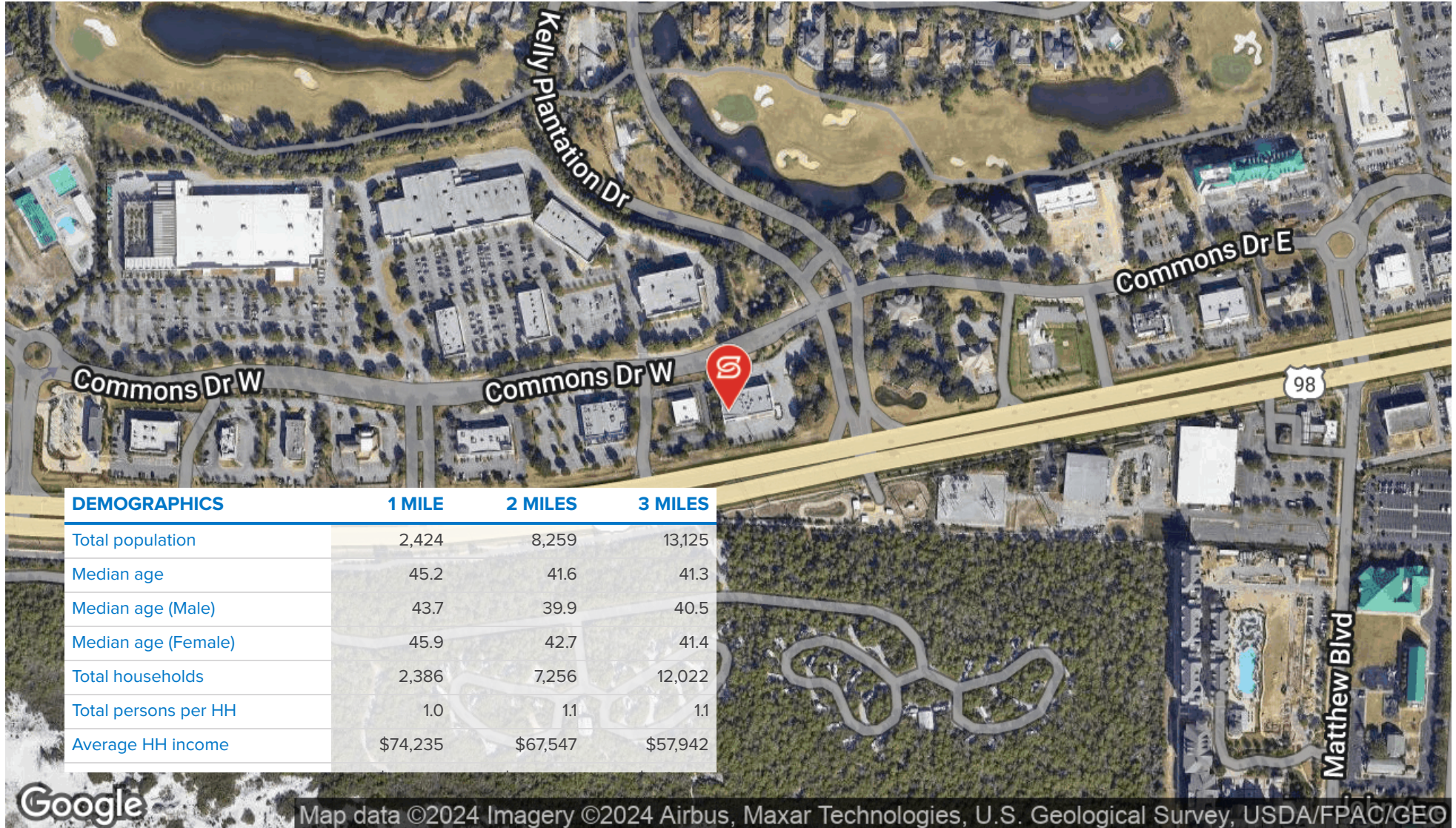
850.972.0162

smaxe@stirlingprop.com

STIRLINGPROPERTIES.COM / f t i in

Member of /4
RETAIL BROKERS NETWORK

The foregoing is solely for information purposes and is subject to change without notice. Stirling Properties makes no representations or warranties regarding the properties or information herein including but not limited to any and all images pertaining to these properties. It is the obligation of each purchaser/lessee to investigate the condition and attributes of the properties and to verify the accuracy of the foregoing information to the extent such purchaser/lessee deems necessary. Also subject to errors, omissions, changes in terms and conditions, prior sale, lease or withdrawal, without notice.



SHAWN MAXEY

850.972.0162

smaxe@stirlingprop.com

STIRLINGPROPERTIES.COM / f t i in

Member of /5
RETAIL BROKERS NETWORK

The foregoing is solely for information purposes and is subject to change without notice. Stirling Properties makes no representations or warranties regarding the properties or information herein including but not limited to any and all images pertaining to these properties. It is the obligation of each purchaser/lessee to investigate the condition and attributes of the properties and to verify the accuracy of the foregoing information to the extent such purchaser/lessee deems necessary. Also subject to errors, omissions, changes in terms and conditions, prior sale, lease or withdrawal, without notice.