



TRI STATE  
COMMERCIAL®  
REAL ESTATE EXPERTS

For Lease



# Clean Retail Space for Lease

Fully Leased

102 Ainslie St • Brooklyn • NY

For Pricing Call: 718-437-6100

**Shlomi Bagdadi**  
☎ 718.437.6100  
sb@tristatecr.com

**Avi Akiva**  
☎ 718.437.6100 x110  
Avi.A@TriStateCR.com



## Location Overview

Located in the Williamsburg neighborhood of Brooklyn between Union Ave & Lorimer St near the Metropolitan Ave - Lorimer St subway station.

Nearest Transit: G & L trains at Metropolitan Ave - Lorimer St and the B48 & Q59 bus lines.

Nearby tenants include Hidden Grounds Cafe, Barcade, The West, Carneval, Ainslie, Montesacero, Think Coffee, Dunkin', Ainslie, Starbucks, Edith's Sandwich Counter, 787 Coffee, Bagelsmith, OKONOMI, Kings Co. Imperial, and more!

## Main Highlights

- ▶ Easy access to the BQE
- ▶ Surrounded by residential buildings
- ▶ Clean, new space
- ▶ Foot traffic
- ▶ Perfect for cafes, juice bars, salons, and more



**26,371 SF**

Total Building Size



**5,200 SF**

Lot Size



**R7A**

Zoning

FOR LEASE • Fully Leased • For Pricing

**Call: 718-437-6100**

**Shlomi Bagdadi**  
☎ 718.437.6100  
sb@tristatecr.com

**Avi Akiva**  
☎ 718.437.6100 x110  
Avi.A@TriStateCR.com

Broker is relying on Landlord or other Landlord-supplied sources for the accuracy of said information and has no knowledge of the accuracy of it. Broker makes no representation and/or warranty, expressed or implied, as to the accuracy of such information.

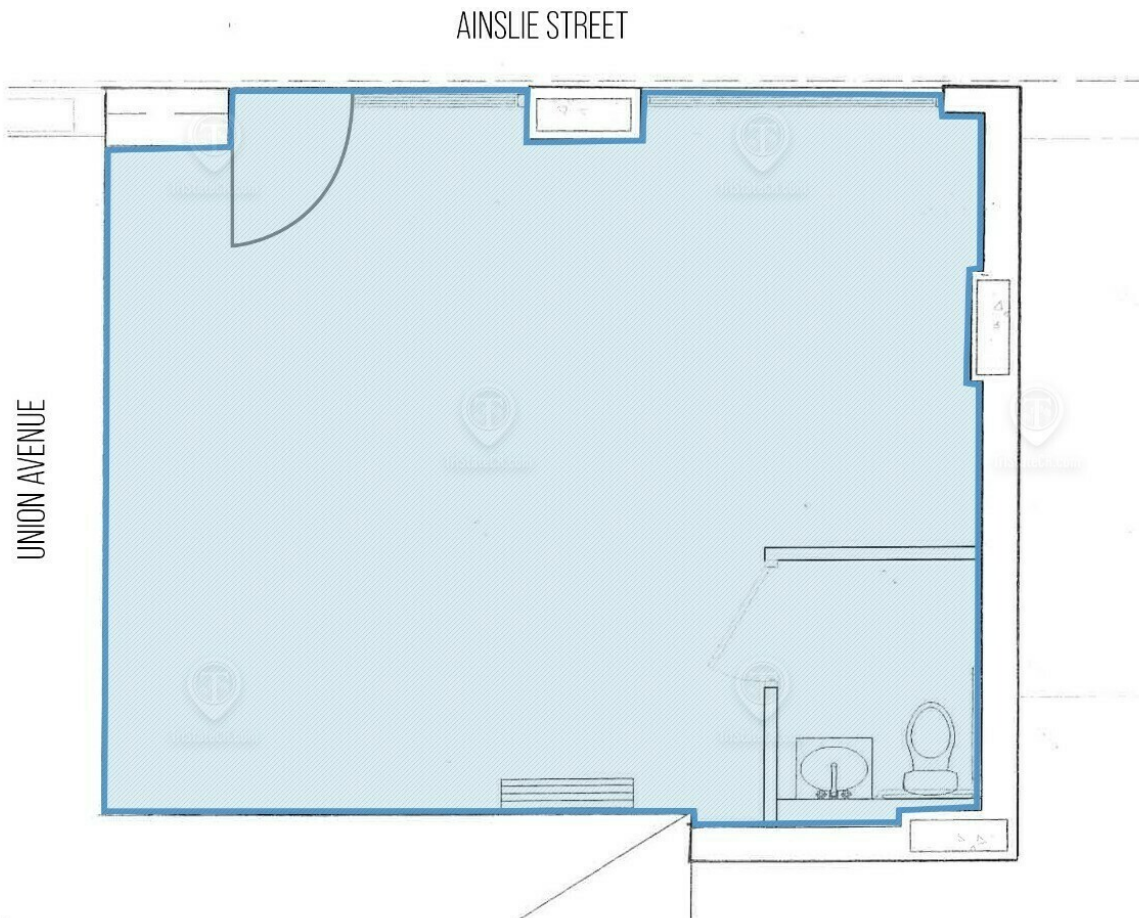




TriStateCR.com

# Floor Plans

102 Ainslie St, Brooklyn, NY 11211



102 AINSLIE STREET  
TOTAL AVAILABLE SPACE: 650 SF

ALL SQUARE FOOTAGES  
ARE APPROXIMATE

FOR LEASE • Fully Leased • For Pricing

**Call: 718-437-6100**

**Shlomi Bagdadi**  
☎ 718.437.6100  
sb@tristatecr.com

**Avi Akiva**  
☎ 718.437.6100 x110  
Avi.A@TriStateCR.com

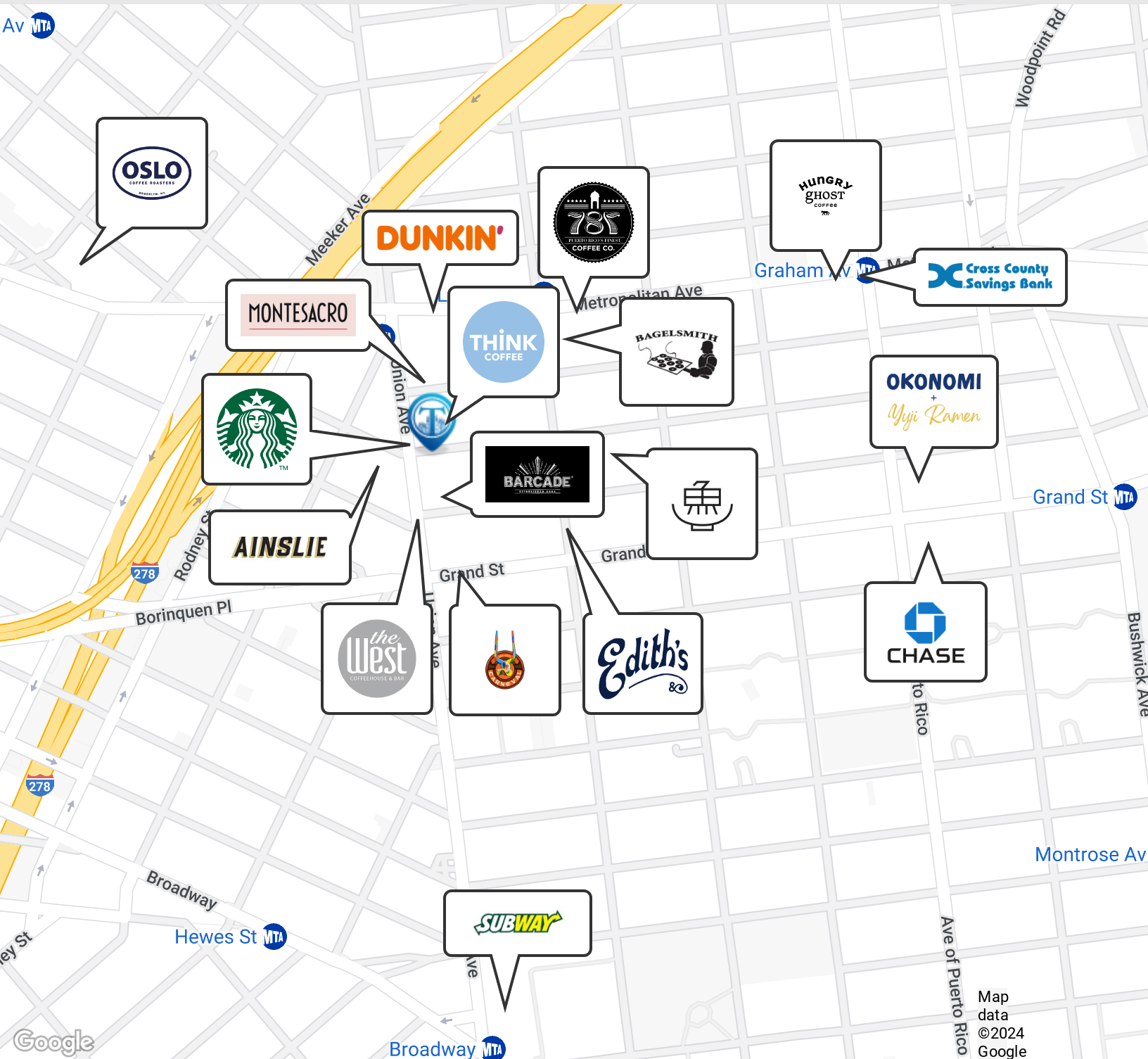
Broker is relying on Landlord or other Landlord-supplied sources for the accuracy of said information and has no knowledge of the accuracy of it. Broker makes no representation and/or warranty, expressed or implied, as to the accuracy of such information.



TriStateCR.com

# Retailer Map

102 Ainslie St, Brooklyn, NY 11211



FOR LEASE • Fully Leased • For Pricing

**Call: 718-437-6100**

**Shlomi Bagdadi**  
 ☎ 718.437.6100  
 sb@tristatecr.com

**Avi Akiva**  
 ☎ 718.437.6100 x110  
 Avi.A@TriStateCR.com

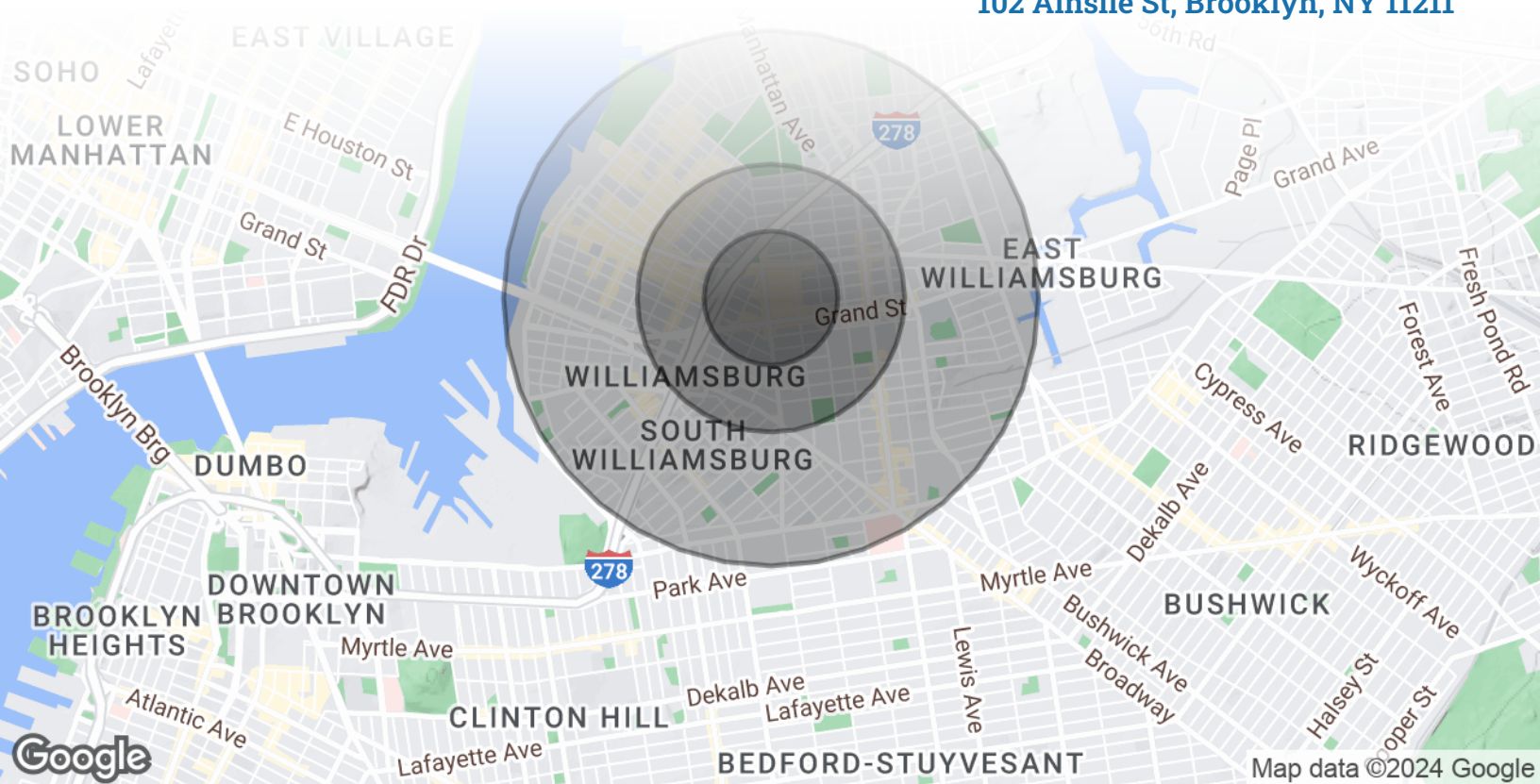
Broker is relying on Landlord or other Landlord-supplied sources for the accuracy of said information and has no knowledge of the accuracy of it. Broker makes no representation and/or warranty, expressed or implied, as to the accuracy of such information.



TriStateCR.com

# Area Demographics

102 Ainslie St, Brooklyn, NY 11211



## POPULATION

### 0.25 MILES

### 0.5 MILES

### 1 MILE

Total Population	11,202	45,652	168,302
Average Age	32.7	33.0	29.4
Average Age (Male)	33.1	32.4	28.4
Average Age (Female)	32.5	34.6	31.2



**168,302**

People within 1 Mile

## HOUSEHOLDS & INCOME

### 0.25 MILES

### 0.5 MILES

### 1 MILE

Total Households	5,219	21,838	69,390
# of Persons per HH	2.1	2.1	2.4
Average HH Income	\$121,539	\$112,249	\$105,033
Average House Value	\$676,182	\$709,185	\$647,610



**\$105,033**

Avg Household Income

FOR LEASE • Fully Leased • For Pricing

**Call: 718-437-6100**

**Shlomi Bagdadi**  
📞 718.437.6100  
sb@tristatecr.com

**Avi Akiva**  
📞 718.437.6100 x110  
Avi.A@TriStateCR.com

Broker is relying on Landlord or other Landlord-supplied sources for the accuracy of said information and has no knowledge of the accuracy of it. Broker makes no representation and/or warranty, expressed or implied, as to the accuracy of such information.



For Lease



TriStateCR.com

# 650 SF | 102 Ainslie St | Clean Retail Space for Lease

Fully Leased • For Pricing **Call: 718-437-6100**

102 Ainslie St • Brooklyn • NY

**Shlomi Bagdadi**

☎ 718.437.6100

sb@tristatecr.com

**Avi Akiva**

☎ 718.437.6100 x110

Avi.A@TriStateCR.com