

225 E SANTA CLARA ST, ARCADIA, CA 91006

1,550 RSF Available – Last Suite! Elegant Office Space



MARIE TAYLOR

LEED AP, Executive Vice President
626.204.1520
mtaylor@naicapital.com
CA DRE #01233430

NAI CAPITAL

225 South Lake Avenue,
Suite M270
Pasadena, CA 91101
naicapital.com | 626.564.4800

NAI Capital
COMMERCIAL REAL ESTATE SERVICES, WORLDWIDE

PROPERTY HIGHLIGHTS



5 min Walk to
Metro Gold Line



5 min Walk
to Restaurants



Secure
Building



Abundant
Parking



Professionally
Managed



Renovated
2017

SPACES

LEASE RATE

SPACE SIZE

STE 140

*** \$2.00 PSF FSG**

±1,550 SF

Southern facing suite with a kitchen. 2 offices and a large open area. Modern interiors. 2 entrances. Common area patio on the first floor

**Introductory rate for six months on a qualifying lease.*



AERIAL MAP



ADDITIONAL PHOTOS

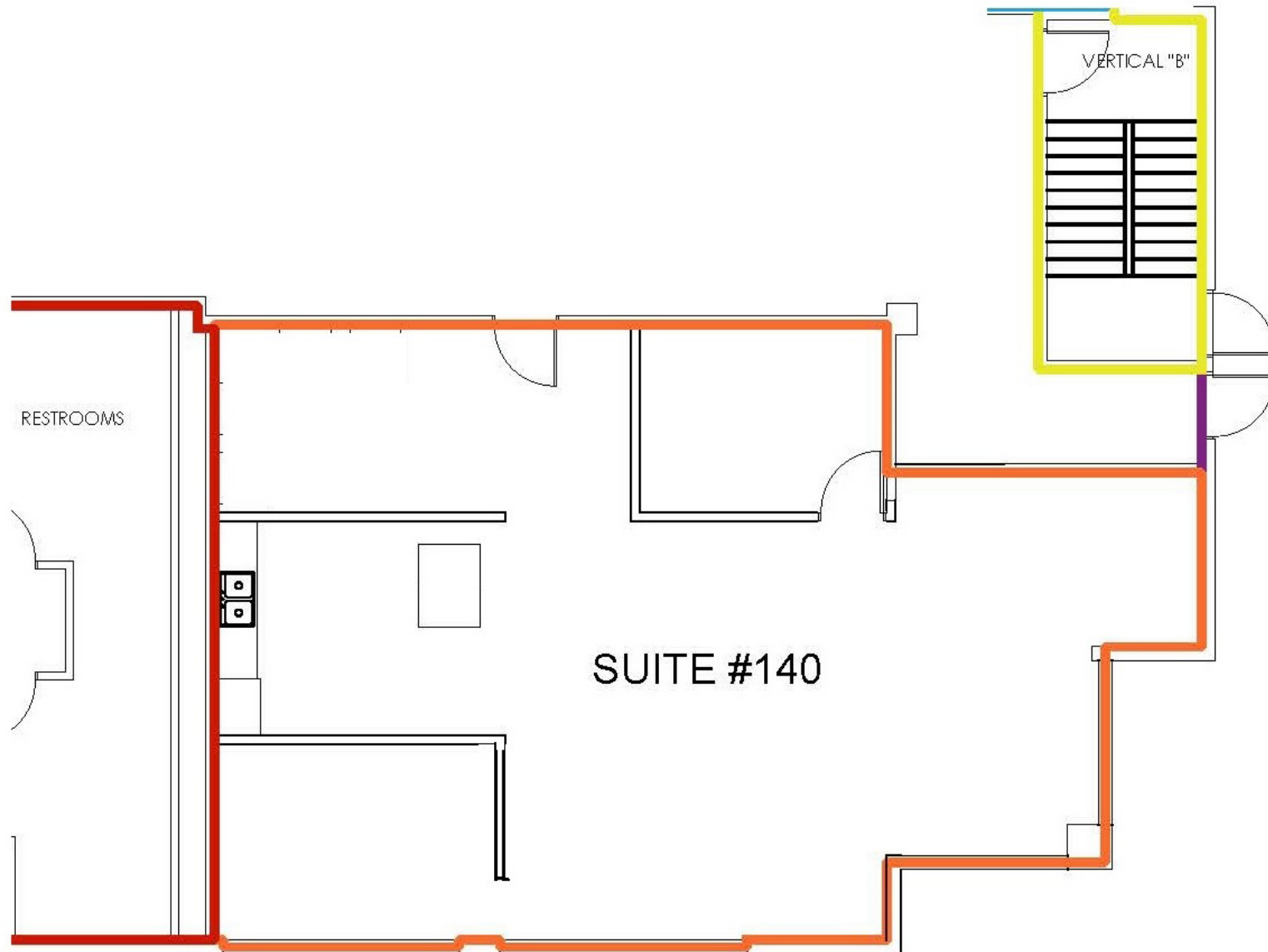


Elegant Office Space 1,550 RSF Available – Last Suite!

225 Santa Clara St. is a modern, elevator served building, built in 2001 and renovated in 2018. Beautiful new interiors with modern energy efficient standards. Professionally managed.



SUITE 140 FLOORPLAN



225 E SANTA CLARA ST, ARCADIA, CA 91006

1,295-1,703 SF available | ELEGANT OFFICE SPACE



MARIE TAYLOR

LEED AP, Executive Vice President

626.204.1520

mtaylor@naicapital.com

CA DRE #01233430

NAI CAPITAL

225 South Lake Avenue,

Suite M270

Pasadena, CA 91101

naicapital.com | 626.564.4800

No warranty, express or implied, is made as to the accuracy of the information contained herein. This information is submitted subject to errors, omissions, change of price, rental or other conditions, withdrawal without notice, and is subject to any special listing conditions imposed by our principals. cooperating brokers, buyers, tenants and other parties who receive this document should not rely on it, but should use it as a starting point of analysis, and should independently confirm the accuracy of the information contained herein through a due diligence review of the books, records, files and documents that constitute reliable sources of the information described herein. NAI Capital Cal DRE Lic #02130474

NAI Capital
COMMERCIAL REAL ESTATE SERVICES, WORLDWIDE