

# INTER-TECH BUSINESS PARK



1415 CHAFFEE DR  
TITUSVILLE, FLORIDA

## INDUSTRIAL OFFICE & FLEX SPACE FOR LEASE

- 7,200 SQFT FOR LEASE
- OUTSIDE STORAGE
- 14 - 16' CLEAR HEIGHT
- 3 PHASE POWER
- OFFICE BUILDOUT



LIGHTLE BECKNER ROBISON



# PROPERTY SUMMARY

THE INTER-TECH BUSINESS PARK IS LOCATED OFF OF GRISSOM PARKWAY ON CHAFFEE DRIVE IN TITUSVILLE, FLORIDA. THIS MULTI TENANT PROPERTY FEATURES 12' GRADE LEVEL BAY DOORS, OFFICE BUILDOUT, 3 PHASE POWER, AMPLE PARKING, AND MORE. THE PROPERTY IS IN GREAT PROXIMITY TO US HIGHWAY 1, PORT CANAVERAL, I-95, AND PROVIDES A GREAT OPPORTUNITY TO HOUSE YOUR BUSINESS ON FLORIDA'S SPACE COAST.

## OVERVIEW

PARCEL ID ..... 23-35-03-00-262

SQUARE FEET ..... 60,000

TENANT ..... MULTI

BUILT ..... 1990

CONSTRUCTION ..... CONCRETE

AVAILABLE ..... 7,200 - 20,000 SF

## LOCATION

LOCATED ON CHAFFEE DRIVE OFF OF GRISSOM PARKWAY IN TITUSVILLE, FLORIDA. THE ITKB BUSINESS PARK OFFERS A PRIME LOCATION WITH EASY ACCESS TO US HIGHWAY 1 AND CLOSE PROXIMITY TO I-95

- 3 MILES TO SPACE COAST REGIONAL AIRPORT
- 9 MILES TO KENNEDY SPACE CENTER
- 20 MILES TO PORT CANAVERAL
- 35 MILES TO ORLANDO AIRPORT

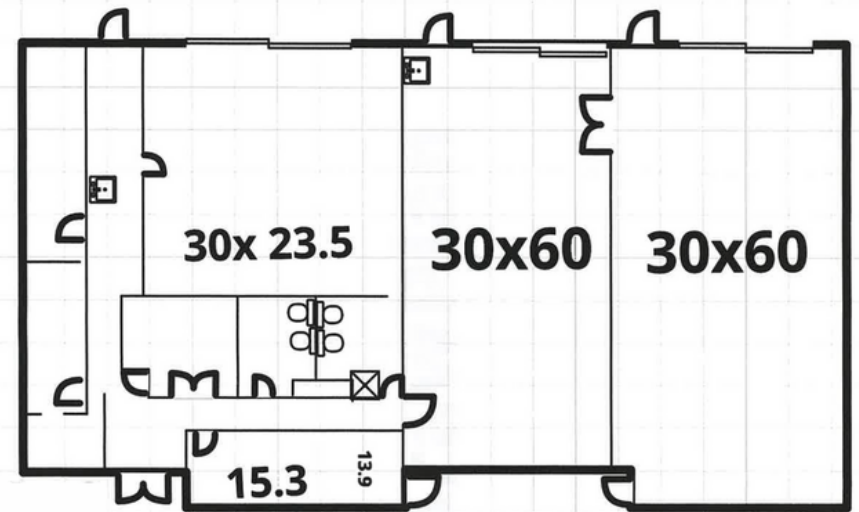


# AVAILABLE SPACE | FOR LEASE



## 1415 CHAFFEE DR

UNIT ..... 1 - 3  
SQUARE FEET ..... 7,200  
ASKING ..... \$17.50/Sf/Yr  
POWER ..... 3 PHASE  
TERM ..... NEGOTIABLE  
BAY DOORS ..... 3 (12x12')





# PHOTOS | PROPERTY



# FOR MORE INFO CONTACT

**MIKE MOSS, SIOR**

DIRECTOR | PRINCIPAL

321-543-2498

MIKE@TEAMLBR.COM

**MICHAEL MOSS II**

ASSOCIATE

321-266-1150

MMOSS@TEAMLBR.COM



---

COMMERCIAL REAL ESTATE SERVICES

---